

*To accompany Australian Notice to Mariners 711/2018*

**OIL AND GAS PIPELINES**

Pipelines carry flammable oil or gas at high pressure. A damaged pipeline could cause an explosion, resulting in damage to a vessel or the environment. Pipelines may pass over bottom undulations, be buried or protrude above the seabed reducing charted depths. Vessels should avoid anchoring, trawling or conducting other underwater operations in the vicinity of the pipelines.

*Note for chart Aus 237*

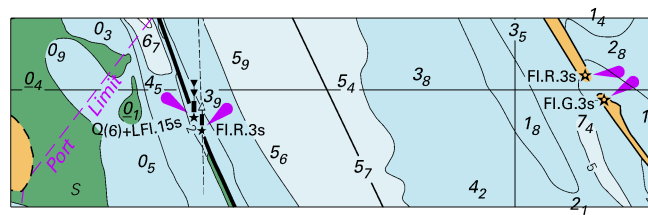
*To accompany Australian Notice to Mariners 711/2018*

**OIL AND GAS PIPELINES**

Pipelines carry flammable oil or gas at high pressure. A damaged pipeline could cause an explosion, resulting in damage to a vessel or the environment. Pipelines may pass over bottom undulations, be buried or protrude above the seabed reducing charted depths. Vessels should avoid anchoring, trawling or conducting other underwater operations in the vicinity of the pipelines.

*Note for chart Aus 238*

To accompany Australian Notice to Mariners 708/2018

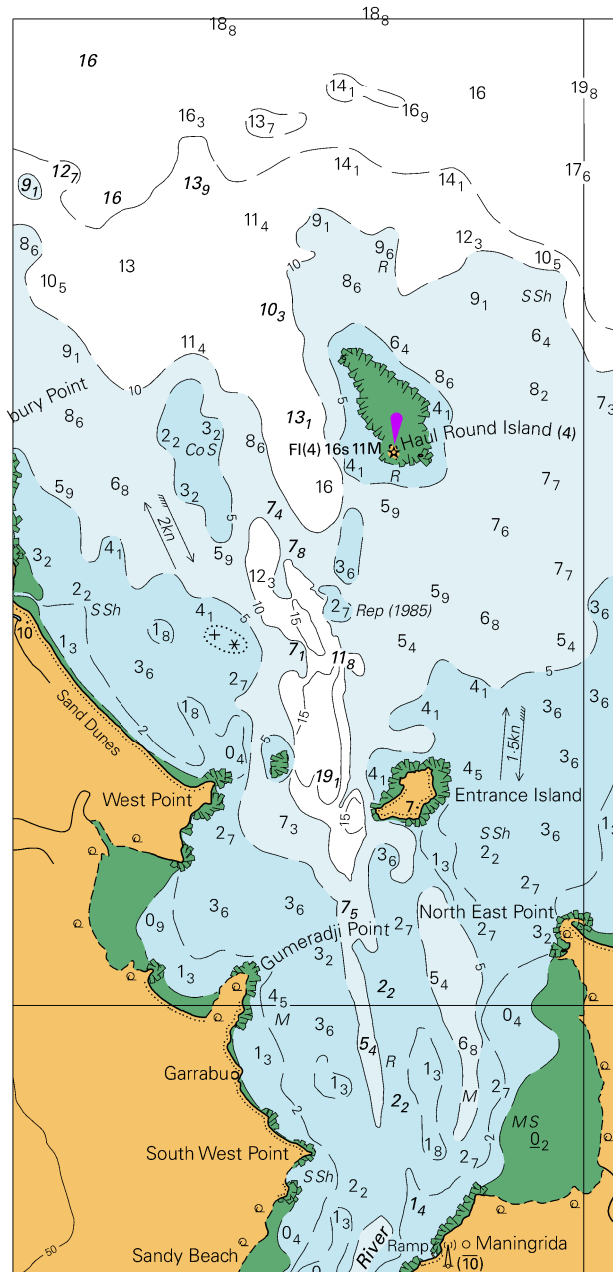


© Commonwealth of Australia 2018

Block for Chart Aus 222

(85.5 x 24.9mm)

To accompany Australian Notice to Mariners 717/2018



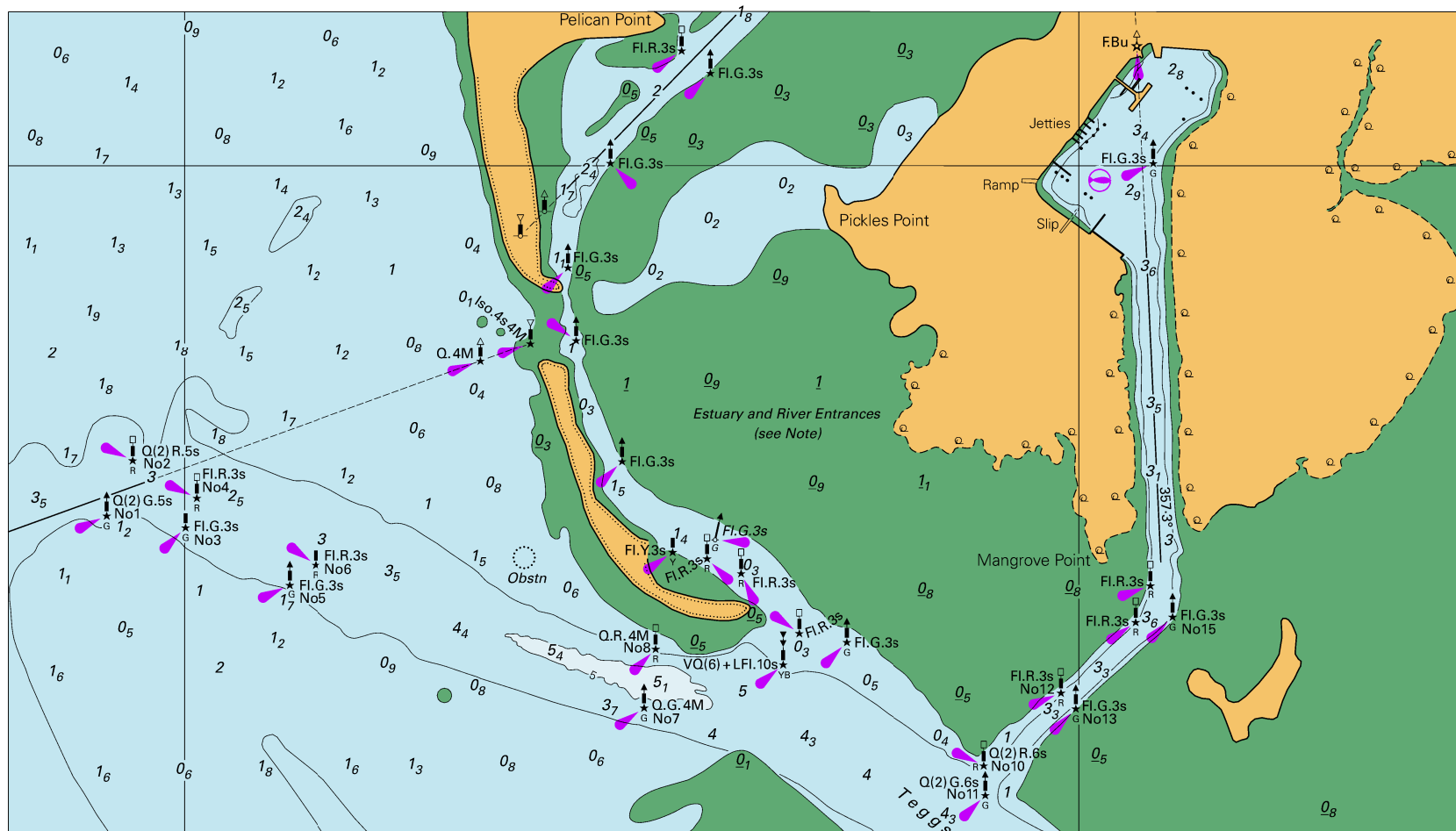
© Commonwealth of Australia 2018

Block for Chart Aus 718

(79.5x165.7mm)



To accompany Australian Notice to Mariners 719/2018



Block A for Chart Aus 73

© Commonwealth of Australia 2018

(220:2 x 124:0mm)

To accompany Australian Notice to Mariners 724/2018

