



18 May 2018

Edition 10

AUSTRALIAN NOTICES TO MARINERS

Notices 381 - 430

Published fortnightly by the Australian Hydrographic Office



Australian Notices to Mariners are the authority for correcting charts and publications published by the Australian Hydrographic Office covering Australia, Papua New Guinea, Solomon Islands, Australian Antarctic Territory and Timor-Leste.

Commodore F.T. FREEMAN RAN
Hydrographer of Australia

SECTIONS.

- I. **Australian Notices to Mariners, including blocks and notes.**
- II. **Hydrographic Reports.**
- III. **Navigational Warnings.**

SUPPLEMENTS.

- I. **Tracings**
- II. **Cumulative List of Australian Notices to Mariners.**
- III. **Cumulative List of Temporary and Preliminary Australian Notices to Mariners.**
- IV. **Temporary and Preliminary Notices in force.**
- V. **Amendments to Admiralty List of Lights and Fog Signals (Vol K), Radio Signals (NP 281(2), 282, 283(2), 285, 286(4)) and Sailing Directions (NP 9, 13, 14, 15, 33, 34, 35, 36, 39, 44, 51, 60, 61, 62, 100, 136).**

© Commonwealth of Australia 2018

This work is copyright. Apart from any use permitted under the Copyright Act 1968, no part may be reproduced by any process, adapted, communicated or commercially exploited without prior written permission from The Commonwealth represented by the Australian Hydrographic Office.

IMPORTANT NOTICE

This edition of Notices to Mariners includes all significant information affecting AHO products which the AHO has become aware of since the last edition. All reasonable efforts have been made to ensure the accuracy and completeness of the information, including third party information, on which these updates are based. The AHO regards third parties from which it receives information as reliable, however the AHO cannot verify all such information and errors may therefore exist. The AHO does not accept liability for errors in third party information.

GENERAL INSTRUCTIONS

The substance of these notices should be inserted on the charts affected.

Bearings are referred to the true compass and are reckoned clockwise from North; those relating to lights are given as seen by an observer from seaward.

Positions quoted in notices relate to WGS84 which is the horizontal datum for all charts produced by the Australian Hydrographic Office.

The range quoted for a light is its nominal range.

Depths are with reference to the chart datum of each chart. Heights are above mean high water springs or mean higher high water, as appropriate.

The capital letter (P) or (T) after the number of any notice denotes a preliminary or temporary notice respectively, which are contained separately at the end of the permanent notices.

REPORTING OF DANGERS

Mariners are particularly requested to notify the AUSTRALIAN HYDROGRAPHIC OFFICE, Locked Bag 8801 Wollongong, NSW 2500 (Fax 02-4223 6599, e-mail datacentre@hydro.gov.au or, alternatively by filling in and submitting the [Hydrographic Notes](#) forms located on the web site – www.hydro.gov.au), immediately on the discovery of new dangers or suspected dangers to navigation. For changes or defects in aids to navigation notify AusSAR (Fax 02-6230 6868 or email rccaus@amsa.gov.au).

AUTHORISED USE

Copies of Australian notices are available free of charge from the Australian Hydrographic Office (AHO) website (www.hydro.gov.au) and through the eNotices (email) service (www.hydro.gov.au/enotices/enotices.htm).

Individual Notices may be copied for the purpose of inserting Notice substance on official charts and publications. Paper copies may be printed by chart agents and distributed to customers on a cost recovery basis. Participating chart agents are listed on the AHO website as providing a 'Paper Notices to Mariners' service (www.hydro.gov.au/webapps/jsp/agents/agents-list.jsp). Copies of the notices may not be sold for profit without prior written agreement.

NUMERICAL INDEX OF NOTICES TO MARINERS

Edition No 10

Notices	Aus Chart, INT Chart, ENC Cell, AHP, BA Pubs
381	Aus 255, SLB 102
382	Aus 192
383	Amendment to Australian National Tide Tables 2018
384	Aus 196
385	Aus 200, 203
386	Aus 806
387	Aus 270, 833
388	Aus 238
389	Aus 259, 267
390	Aus 826
391	Aus 4, 301
392	Aus 520
393	Aus 505, 621, 622
394	Aus 314, 319
395	Aus 58
396	Aus 137
397	Aus 139, 485, 777, 778, 780, 781
398	Aus 357, 487, 802
399	Aus 164
400(P)	Aus 200, 203
401(T)	Aus 301
402(T)	Aus 301
403(T)	Aus 301, 4060, 4603, 4620, 4720, INT 60, 603, 620, 720
404(T)	Aus 814, 815, 4602, 4635, 4643, INT 602, 635, 643
405(T)	Aus 270
406(T)	Aus 230
407(T)	Aus 250
408(T)	Aus 235, 236
409(T)	Aus 230, 814
410(T)	Aus 293, 299
411(T)	Aus 4
412(P)	Aus 506, 507, 623
413(T)	Aus 23, 722
414(T)	Aus 22, 309, 310, 722
415(T)	Aus 24, 25, 26, 309, 722
416(T)	Aus 26, 28
417(T)	Aus 26, 28, AX 00026T
418(T)	Aus 326, 739, 4722, INT 722
419(T)	Aus 332
420(T)	Aus 319, 320
421(T)	Aus 58, 59
422(T)	Aus 319
423(T)	Aus 744, 745
424(T)	Aus 328, 329, 744, 4723, 4725, INT 723, 725
425(T)	Aus 327
426(T)	Aus 327
427(T)	Aus 126, 347, 780
428(T)	Aus 154
429(T)	Aus 150, 151
430(T)	Aus 790

NUMERICAL INDEX OF CHARTS AFFECTED

Edition No 10

Aus Chart	Notices
Aus 4	391, 411(T)
Aus 22	414(T)
Aus 23	413(T)
Aus 24	415(T)
Aus 25	415(T)
Aus 26	415(T), 416(T), 417(T)
Aus 28	416(T), 417(T)
Aus 58	395, 421(T)
Aus 59	421(T)
Aus 126	427(T)
Aus 137	396
Aus 139	397
Aus 150	429(T)
Aus 151	429(T)
Aus 154	428(T)
Aus 164	399
Aus 192	382
Aus 196	384
Aus 200	385, 400(P)
Aus 203	385, 400(P)
Aus 230	406(T), 409(T)
Aus 235	408(T)
Aus 236	408(T)
Aus 238	388
Aus 250	407(T)
Aus 255	381
Aus 259	389
Aus 267	389
Aus 270	387, 405(T)
Aus 293	410(T)
Aus 299	410(T)
Aus 301	391, 401(T), 402(T), 403(T)
Aus 309	414(T), 415(T)
Aus 310	414(T)
Aus 314	394
Aus 319	394, 420(T), 422(T)
Aus 320	420(T)
Aus 326	418(T)
Aus 327	425(T), 426(T)
Aus 328	424(T)
Aus 329	424(T)
Aus 332	419(T)
Aus 347	427(T)
Aus 357	398
Aus 485	397
Aus 487	398
Aus 505	393
Aus 506	412(P)
Aus 507	412(P)
Aus 520	392
Aus 621	393
Aus 622	393
Aus 623	412(P)
Aus 722	413(T), 414(T), 415(T)

Aus Chart	Notices
Aus 739	418(T)
Aus 744	423(T), 424(T)
Aus 745	423(T)
Aus 777	397
Aus 778	397
Aus 780	397, 427(T)
Aus 781	397
Aus 790	430(T)
Aus 802	398
Aus 806	386
Aus 814	404(T), 409(T)
Aus 815	404(T)
Aus 826	390
Aus 833	387
Aus 4060	403(T)
Aus 4602	404(T)
Aus 4603	403(T)
Aus 4620	403(T)
Aus 4635	404(T)
Aus 4643	404(T)
Aus 4720	403(T)
Aus 4722	418(T)
Aus 4723	424(T)
Aus 4725	424(T)
AX 00026T	417(T)
SLB 102	381

INT Chart	Notices
INT 60	403(T)
INT 602	404(T)
INT 603	403(T)
INT 620	403(T)
INT 635	404(T)
INT 643	404(T)
INT 720	403(T)
INT 722	418(T)
INT 723	424(T)
INT 725	424(T)

381 AUSTRALIA - Products- New Charts and New Editions to be published shortly

Australian Hydrographic Service

New Charts to be published shortly

<i>Chart</i>	<i>Title</i>	<i>Scale</i>	<i>Expected Publication Date</i>	<i>Remarks</i>
NIL				

New Editions to be published shortly

<i>Chart</i>	<i>Title</i>	<i>Scale</i>	<i>Expected Publication Date</i>	<i>Remarks</i>
SLB 102	Plans in the New Georgia Group Plans: Gizo Harbour and Approaches Ringgi Cove Blackett Strait Lever Harbour Port Noro	1:25 000 1:15 000 1:50 000 1:7 500 1:20 000	1st June 2018	New Edition to incorporate latest bathymetric data.
AUS 255	Approaches to Abbot Point Plan: Abbot Point Wharf	1:25 000 1:12 500	1st June 2018	New Edition to incorporate latest bathymetric data.

382 AUSTRALIA - Products - New Charts, New Editions, Withdrawn Charts

Australian Hydrographic Office

New Charts

<i>Chart</i>	<i>Title and Geographical limits</i>	<i>Scale</i>	<i>Publication Date</i>	<i>Remarks</i>
NIL				

New Electronic Navigation Chart (Aus ENC)

<i>Cell Name</i>	<i>Title</i>	<i>Publication Date</i>	<i>Remarks</i>
NIL			

New Editions and Withdrawn Charts

<i>Chart</i>	<i>Title</i>	<i>Scale</i>	<i>Publication Date</i>	<i>Remarks</i>
AUS 192	Australia - East Coast - New South		18th May 2018	New Edition to incorporate latest bathymetric data
Edition 3	Wales - Twofold Bay Plans: Eden East Boyd Bay Wharves	1:25 000 1:7 500 1:7 500		Chart Aus 192 Edition 2 dated 7 October 2016 is now superseded and must be withdrawn from use.

Chart permanently withdrawn

Charts listed above as withdrawn no longer meet chart carriage requirements and should be marked as "superseded" and replaced with the new chart/ new edition listed prior to passage through the area covered by the new chart.

When placing orders with a chart agent between notice of forthcoming edition and its publication, mariners should advise whether their order pertains to the current edition or the new edition.

For further details refer to the AHS website at www.hydro.gov.au for new edition and new chart stock arrival information.

383 AUSTRALIA - Product - Amendment to Australian National Tide Tables 2018
 Australian Hydrographic Service

ANTT 2018

Page 359

Amend Broome To Chart Datum AU5050P0 ENC 0.0
Amend Broome To Chart Datum AUS 51 NE 28 Jul 2017 0.0
Amend Broome To Chart Datum AUS 50 NC 15 JAN 2010 0.0
Amend Broome To Chart Datum AUS 324 NE 13 AUG 2010 0.0
Amend Bunbury To Chart Datum AU5115P1 ENC ADD 0.1
Amend Bunbury To Chart Datum AUS 115 NE 25 MAR 2016 ADD 0.1
Amend Bunbury To Chart Datum AUS 755 NE 16 JAN 2009 ADD 0.1
Amend Bunbury To Chart Datum AUS 335 NE 02 JUL 2010 0.0
Amend Cape Domett To Chart Datum AU415128 ENC 0.0
Amend Cape Domett To Chart Datum AUS 32 NE 11 AUG 2017 0.0
Amend Cape Voltaire To Chart Datum AU415125 ENC 0.0
Amend Cape Voltaire To Chart Datum AUS 728 NC 07 SEP 2012 0.0
Amend Cape Voltaire To Chart Datum AUS 729 NC 07 FEB 2003 SUBTRACT 0.4
Amend Carnarvon To Chart Datum AU5073P2 ENC 0.0
Amend Carnarvon To Chart Datum AUS 73 NC 07 NOV 2008 0.0
Amend Carnarvon To Chart Datum AUS 331 NE 10 FEB 2017 0.0

Page360

Amend Dampier To Chart Datum AU5058P0 ENC 0.0
Amend Dampier To Chart Datum AUS 59 NE 23 OCT 2015 0.0
Amend Dampier To Chart Datum AUS 60 NE 02 DEC 2016 0.0
Amend Dampier To Chart Datum AUS 58 NE 02 DEC 2016 0.0
Amend Dampier To Chart Datum AUS 57 NE 01 AUG 2014 0.0
Amend Derby To Chart Datum AU418123 ENC 0.0
Amend Derby To Chart Datum AUS 45 NC 19 MAR 1999 0.0

Page 361

Amend Esperance To Chart Datum AU5119P1 ENC 0.0
Amend Esperance To Chart Datum AUS 119 NE 16 APR 2004 0.0
Amend Exmouth To Chart Datum AUS 744 NE 05 DEC 2014 0.0
Amend Exmouth To Chart Datum AUS 745 NE 07 SEP 2012 0.0
Amend Exmouth To Chart Datum AUS 329 NE 21 SEP 2012 0.0

383 AUSTRALIA - Product - Amendment to Australian National Tide Tables 2018

Page 362

Amend Honiara To Chart Datum SLB 101 NE 06 APR 2018 SUBTRACT 0.2

Page 363

Amend Lucinda To Chart Datum AUS 267 NE 09 MAR 2018 0.0

Page 366

Amend Thevenard Island To Chart Datum AUS 743 NC 05 DEC 2014 0.0*Amend* Thevenard Island To Chart Datum AUS 328 NC 05 DEC 2014 0.0*Amend* Townsville To Chart Datum AUS 257 NE 22 SEP 2017 SUBTRACT 0.1

Page 367

Amend Wyndham To Chart Datum AU5032P1 ENC 0.0*Amend* Wyndham To Chart Datum AUS 32 NE 11 AUG 2017 0.0**384 AUSTRALIA - NEW SOUTH WALES - Botany Bay - Yarra Point - Fish haven amended**

Port Authority of New South Wales

Aus 196 [94/2018]

<i>Insert</i>	fish haven limit, between	33° 58'.984 S	151° 13'.431 E
		33° 58'.959 S	151° 13'.492 E
		33° 58'.914 S	151° 13'.419 E
		33° 58'.938 S	151° 13'.373 E
		33° 58'.984 S	151° 13'.431 E
<i>Delete</i>	fish haven limit, between	33° 58'.97 S	151° 13'.46 E
		33° 58'.96 S	151° 13'.48 E
		33° 58'.92 S	151° 13'.43 E
		33° 58'.95 S	151° 13'.42 E
		33° 58'.97 S	151° 13'.46 E

385 AUSTRALIA - NEW SOUTH WALES - Port Jackson - Parramatta River - Depths; wrecks

Port Authority of New South Wales

Aus 200 (inset, Parramatta River) [312/2018]

Insert	depth, 10 ₈ m, enclosed by danger circle with legend Wk	33° 50'.239 S	151° 06'.599 E
	depth, 4 ₉ m, enclosed by danger circle with legend Wk	33° 49'.938 S	151° 06'.260 E
	depth, 1 ₉ m, enclosed by contour	33° 49'.391 S	151° 05'.643 E
	depth, 1 ₉ m, enclosed by contour	33° 49'.295 S	151° 05'.106 E
Delete	depth, 2 ₇ m	33° 49'.40 S	151° 05'.64 E
	depth, 2 ₉ m	33° 49'.31 S	151° 05'.11 E
	depth, 13 ₇ m	33° 49'.95 S	151° 06'.22 E

Aus 203 [1008/2017]

Insert	depth, 1 ₉ m, and extend contour S to enclose	33° 50'.158 S	151° 06'.525 E
	depth, 10 ₈ m, enclosed by danger circle with legend Wk	33° 50'.239 S	151° 06'.599 E
	depth, 4 ₉ m, enclosed by danger circle with legend Wk	33° 49'.938 S	151° 06'.260 E
	depth, 1 ₉ m, enclosed by contour	33° 49'.391 S	151° 05'.643 E
	depth, 1 ₉ m, enclosed by contour	33° 49'.295 S	151° 05'.106 E
	depth, 1 ₆ m, and extend contour N to enclose	33° 49'.322 S	151° 04'.756 E
Delete	depth, 18 ₄ m	33° 50'.24 S	151° 06'.61 E
	depth, 2 ₇ m	33° 49'.40 S	151° 05'.64 E
	depth, 2 ₉ m	33° 49'.31 S	151° 05'.11 E

386 AUSTRALIA - NEW SOUTH WALES - Twofold Bay - Lookout Point - Depth

Port Authority of New South Wales

Aus 806 [168/2017]

Insert	contour between	37° 04'.80 S	149° 55'.19 E
		37° 05'.22 S	149° 55'.20 E
Delete	contour between	37° 04'.8 S	149° 55'.2 E
		37° 05'.2 S	149° 55'.2 E

387 AUSTRALIA - QUEENSLAND - Aylen Patch - DepthsHMAS *Benalla* and HMAS *Shepparton***Aus 270 (plan, Cape Melville and Pipon Islets) [237/2018]**

Replace	depth, 9 ₃ m, with depth, 7 ₃ m	14° 06'.1 S	144° 28'.7 E
---------	---	-------------	--------------

Aus 833 [895/2017]

Insert	depth, 22 ₇ m	14° 03'.84 S	144° 29'.11 E
Replace	depth, 9 ₃ m, with depth, 7 ₃ m	14° 06'.1 S	144° 28'.7 E

388 AUSTRALIA - QUEENSLAND - Brisbane River - Quarries Reach - Light beacon withdrawn

Maritime Safety Queensland Notice 149/2018

Aus 238 [236/2018]

Delete	light beacon	27° 26'.95 S	153° 05'.47 E
--------	--------------	--------------	---------------

389 AUSTRALIA - QUEENSLAND - Lucinda - Nav aids

Maritime Safety Queensland

Aus 259 [277/2018]

Insert	light, <i>F.RG & Oc.2s 5M</i>	18° 31'.38 S	146° 20'.66 E
	dashed line in a direction 066.4° for a distance of 300m, thence a continuous line for 8960m, with legend <i>Dir 246.4°</i> , emanating from light	18° 31'.38 S	146° 20'.66 E
Delete	light	18° 31'.5 S	146° 20'.1 E
	dashed and continuous line with legend 247.5°, emanating from light	18° 31'.3 S	146° 20'.1 E
	light	18° 31'.4 S	146° 20'.5 E

Aus 267 [277/2018]

Insert	light, <i>F.RG & Oc.2s 5M</i> , with sectors	18° 31'.379 S	146° 20'.659 E
	Green 243° - 244.9° (1.9°)		
	White 244.9° - 247.9° (3°)		
	Red 247.9° - 249.9° (2°)		
	dashed line in a direction 066.4° for a distance of 300m, thence a continuous line for 8960m, with legend <i>Dir 246.4°</i> , emanating from light	18° 31'.379 S	146° 20'.659 E
Delete	light	18° 31'.55 S	146° 20'.13 E
	dashed and continuous line with legend 247.5°, emanating from light	18° 31'.35 S	146° 20'.13 E
	light	18° 31'.39 S	146° 20'.54 E

390 AUSTRALIA - QUEENSLAND - Upstart Bay - DepthsHMAS *Melville***Aus 826 [240/2018]**

Insert	accompanying block A	19° 43'.0 S	147° 45'.0 E
	accompanying block B	19° 59'.0 S	147° 42'.0 E

391 AUSTRALIA - QUEENSLAND - Weipa - Albatross Bay - Anchorages; pilot boarding place; port/pilotage limit; mooring buoy

Maritime Safety Queensland

Aus 4 [273/2018]

Insert	anchor berth, desig 1, with 0.5M radius swinging circle	12° 45'.00 S	141° 34'.10 E
	anchor berth, desig 2, with 0.5M radius swinging circle	12° 45'.72 S	141° 33'.12 E
	anchor berth, desig 3, with 0.5M radius swinging circle	12° 46'.90 S	141° 33'.20 E
	anchor berth, desig 4, with 0.5M radius swinging circle	12° 47'.40 S	141° 34'.30 E
	pilot boarding place with legend, <i>Amrun</i>	12° 48'.90 S	141° 34'.80 E
	magenta dashed line, with legend, <i>Amrun Port/Pilotage Limit</i> , between	12° 52'.04 S	141° 32'.53 E
		12° 50'.00 S	141° 32'.48 E
		12° 50'.00 S	141° 37'.60 E

Aus 4 (plan, Port of Weipa) [273/2018]

Amend	legend, Emergency to <i>Emergency Anchorage</i>	12° 41'.67 S	141° 52'.93 E
Delete	lit mooring buoy	12° 41'.76 S	141° 53'.20 E
	anchor symbol	12° 41'.67 S	141° 53'.02 E

Aus 301 [314/2018]

Insert	pilot boarding place with legend, <i>Amrun</i>	12° 48'.90 S	141° 34'.80 E
	magenta dashed line, with legend, <i>Amrun Port/Pilotage Limit</i> , between	12° 50'.00 S	141° 37'.60 E
		12° 50'.00 S	141° 32'.48 E
		13° 00'.00 S	141° 32'.73 E
		13° 00'.00 S	141° 35'.07 E

392 PAPUA NEW GUINEA - Cape Nelson - Preferred Route

National Maritime Safety Authority PNG

Aus 520 [598/2017]

Insert	preferred route with legends <i>090°-270°</i> and <i>Preferred Route (see Note)</i> , between	08° 58'.00 S 08° 58'.00 S	149° 16'.49 E 148° 57'.94 E
Amend	bearing to <i>116°-296°</i>	8° 58'.6 S	149° 18'.1 E
Delete	preferred route, between	08° 58'.2 S 08° 58'.2 S	148° 58'.1 E 149° 16'.9 E

393 PAPUA NEW GUINEA - Port Moresby - WrecksHMAS *Melville***Aus 505 [346/2018]**

Insert	depth, <i>20₃m</i> , enclosed by danger circle with legend, <i>Wk</i>	09° 32'.99 S	147° 10'.28 E
--------	--	--------------	---------------

Aus 621 [346/2018]

Insert	depth, <i>20₃m</i> , enclosed by danger circle with legend, <i>Wk</i>	09° 32'.993 S	147° 10'.284 E
	depth, <i>5₃m</i> , enclosed by danger circle with legend, <i>Wk</i>	09° 27'.943 S	147° 08'.872 E
Delete	depth, <i>27₅m</i>	09° 32'.99 S	147° 10'.23 E
	depth, <i>9₁m</i> , enclosed by danger circle	9° 27'.86 S	147° 08'.90 E
	depth, <i>6₃m</i>	9° 27'.95 S	147° 08'.91 E

Aus 622 [346/2018]

Insert	depth, <i>5₃m</i> , enclosed by danger circle with legend, <i>Wk</i>	09° 27'.943 S	147° 08'.872 E
	depth, <i>4₈m</i> , enclosed by danger circle with legend, <i>Wk</i>	09° 27'.833 S	147° 08'.921 E
Delete	wreck	9° 27'.86 S	147° 08'.90 E
	depth, <i>6₃m</i>	9° 27'.81 S	147° 08'.93 E

Aus 622 (plan, Port Moresby and Napa Napa Wharves) [346/2018]

Insert	depth, <i>5₃m</i> , enclosed by danger circle with legend, <i>Wk</i>	09° 27'.943 S	147° 08'.872 E
	depth, <i>4₈m</i> , enclosed by danger circle with legend, <i>Wk</i>	09° 27'.833 S	147° 08'.921 E
Delete	wreck	9° 27'.86 S	147° 08'.90 E

394 AUSTRALIA - WESTERN AUSTRALIA - Barracouta Shoal - Well northeastwards

Eni Australia Ltd

Aus 314 [728/2017]

Insert	well, centred on	12° 15'.43 S	124° 31'.37 E
--------	------------------	--------------	---------------

Aus 319 [732/2017]

Insert	well, centred on	12° 15'.43 S	124° 31'.37 E
--------	------------------	--------------	---------------

395 AUSTRALIA - WESTERN AUSTRALIA - Dampier - Mermaid Sound - Bearing

MMA Leveque

Aus 58 [200/2018]

Amend	bearing to <i>198.3° - 018.3°</i>	20° 31'.68 S	116° 43'.86 E
	bearing to <i>194.8° - 014.8°</i>	20° 33'.32 S	116° 42'.36 E
	bearing to <i>193° - 013°</i>	20° 33'.26 S	116° 43'.37 E

396 AUSTRALIA - SOUTH AUSTRALIA - Port Adelaide - Berth

Flinders Ports

Aus 137 [156/2018]

Insert	berth desig, 4	34° 47'.980 S	138° 30'.620 E
--------	----------------	---------------	----------------

Delete	legend, Penrice Wharf	34° 47'.96 S	138° 30'.57 E
--------	-----------------------	--------------	---------------

397 AUSTRALIA - SOUTH AUSTRALIA - Spencer Gulf to Gulf of St Vincent - Depths

LADS Flight

Aus 139 (plan, Macdonnell Sound) [155/2018]

Insert	depth, 13m, and extend contour SE to enclose	35° 07'.89 S	137° 52'.83 E
	depth, 8m, enclosed by contour	35° 05'.58 S	137° 53'.06 E

Aus 485 [202/2018]

Insert	depth, 8m, enclosed by contour	33° 53'.02 S	137° 12'.81 E
	depth, 12m	33° 59'.62 S	137° 06'.26 E
	depth, 12m, enclosed by contour	35° 14'.26 S	137° 24'.09 E

Replace	depth, 19m, with depth, 17m	34° 00'.3 S	136° 59'.3 E
---------	-----------------------------	-------------	--------------

Delete	depth, 10m	33° 52'.7 S	137° 12'.9 E
	depth, 13m	33° 59'.3 S	137° 07'.4 E

Aus 777 [102/2018]

Insert	out of position depth, 12m, enclosed by contour	33° 50'.22 S	137° 09'.51 E
	depth, 13m, enclosed by contour	33° 51'.59 S	137° 08'.24 E
	depth, 12m, enclosed by contour	33° 51'.64 S	137° 11'.35 E
	depth, 8m, enclosed by contour	33° 53'.02 S	137° 12'.81 E
	depth, 14m enclosed by contour	33° 55'.31 S	137° 08'.81 E
	depth, 12m, and extend contour S to enclose	33° 59'.62 S	137° 06'.26 E

Replace	depth 15m, with depth, 12m	33° 51'.4 S	137° 14'.7 E
	depth, 13m, with depth, 12m	33° 54'.7 S	137° 04'.7 E
	depth, 19m, with depth, 17m	34° 00'.3 S	136° 59'.3 E

Delete	depth, 10m	33° 52'.7 S	137° 12'.9 E
--------	------------	-------------	--------------

Aus 778 [865/2017]

Insert	depth, 12m, enclosed by contour	33° 50'.22 S	137° 09'.51 E
	depth, 13m, enclosed by contour	33° 51'.59 S	137° 08'.24 E
	depth, 12m, enclosed by contour	33° 51'.64 S	137° 11'.35 E
	depth, 12m	33° 51'.37 S	137° 14'.66 E
	depth, 8m, enclosed by contour	33° 53'.02 S	137° 12'.81 E

Delete	depth, 10m	33° 52'.7 S	137° 12'.9 E
	depth, 13m	33° 51'.1 S	137° 15'.0 E

Aus 780 [202/2018]

Insert	depth, 12m, enclosed by contour	35° 14'.26 S	137° 24'.09 E
	depth, 13m, and extend contour SE to enclose	35° 07'.89 S	137° 52'.83 E

Aus 781 [155/2018]

Insert	depth, 13m, and extend contour SE to enclose	35° 07'.89 S	137° 52'.83 E
	depth, 9m, enclosed by contour	34° 36'.07 S	138° 09'.11 E

398 AUSTRALIA - VICTORIA - Wilsons Promontory - Depths

Australian Hydrographic Office

Aus 357 [353/2018]

Insert	depth, 29 ₃ m, enclosed by contour	39° 08'.12 S	146° 20'.40 E
	depth, 18 ₆ m, enclosed by contour	39° 08'.78 S	146° 22'.24 E
Replace	depth, 63m, with depth, 49m and extend contour SE to enclose	39° 09'.1 S	146° 20'.8 E

Aus 487 [69/2018]

Insert	depth, 27m, enclosed by contour	39° 04'.77 S	146° 15'.87 E
Delete	depth, 38m	39° 04'.4 S	146° 15'.4 E

Aus 802 [1083/2017]

Insert	depth, 17 ₁ m, enclosed by contour	39° 03'.50 S	146° 18'.30 E
	depth, 24 ₄ m, enclosed by contour	39° 03'.93 S	146° 17'.58 E
	depth, 27 ₆ m, enclosed by contour	39° 04'.11 S	146° 15'.96 E
	depth, 27m, enclosed by contour	39° 04'.77 S	146° 15'.87 E
	depth, 29 ₃ m, enclosed by contour	39° 08'.12 S	146° 20'.40 E
	depth, 16 ₆ m, enclosed by contour	39° 04'.72 S	146° 26'.57 E
	depth, 19 ₃ m, enclosed by contour	39° 04'.07 S	146° 27'.41 E
Replace	depth, 54m, with depth, 44m enclosed by contour	39° 09'.8 S	146° 19'.3 E
	depth, 63m, with depth, 49m and extend contour SE to enclose	39° 09'.1 S	146° 20'.8 E
	depth, 25 ₆ m, with depth, 18 ₆ m	39° 08'.8 S	146° 22'.2 E
	depth, 25m, with depth, 18 ₄ m enclosed by contour	39° 07'.2 S	146° 25'.7 E
	depth, 25 ₁ m, with depth, 15m enclosed by contour	39° 04'.1 S	146° 18'.8 E

399 AUSTRALIA - TASMANIA - Devonport - Dredged area

Marine and Safety Tasmania Notice 84/2018

Aus 164 (plan, Devonport) [106/2018]

Delete	dashed line between	41° 11'.02 S	146° 21'.80 E
		41° 10'.93 S	146° 21'.83 E
	legend 8·9m	41° 10'.98 S	146° 21'.80 E

400(P)/2018 AUSTRALIA - NEW SOUTH WALES - Port Jackson - Parramatta River - Shoaling
Port Authority of New South Wales

Latest survey shows shoaler depths than those charted may exist upstream of Archer Point (34° 49'.18 S 151° 04'.40 E).

Mariners are advised to navigate with caution in the area.

Charts will be updated in due course.

Chart which will be affected - Aus 200 - Aus 203

401(T)/2018 AUSTRALIA - QUEENSLAND - Boyd Point - Scientific instruments recovered
Former Notice - 1005(T)/2015 is cancelled
Maritime Safety Queensland

Cancel this notice on receipt.

Chart formerly affected - Aus 301

402(T)/2018 AUSTRALIA - QUEENSLAND - Boyd Point - Mooring buoys recovered
Former Notice - 746(T)/2017 is cancelled
Maritime Safety Queensland

Cancel this notice on receipt.

Chart formerly affected - Aus 301

403(T)/2018 AUSTRALIA - QUEENSLAND - Boyd Point - Mooring buoys
Maritime Safety Queensland Notice 137(T)/2018

Lit mooring buoys, *Fl.Y.5s*, exist in positions 12° 54'.07 S 141° 38'.86 E and 12° 54'.17 S 141° 38'.72 E.

Mariners are advised to navigate with caution in the area.

Chart temporarily affected - Aus 301 - Aus 4060 (INT 60) - Aus 4603 (INT 603) - Aus 4620 (INT 620) - Aus 4720 (INT 720)

404(T)/2018 AUSTRALIA - QUEENSLAND - Cape Moreton - Subsea operations complete
Former Notice - 360(T)/2018 is cancelled
Australian Maritime Safety Authority

Cancel this notice on receipt.

Chart formerly affected - Aus 814 - Aus 815 - Aus 4602 (INT 602) - Aus 4635 (INT 635) - Aus 4643 (INT 643)

405(T)/2018 AUSTRALIA - QUEENSLAND - Cooktown - Light buoys unlit
Maritime Safety Queensland

The port lateral light buoy, *Fl.R.2·5s No2* (15° 27'.22 S 145° 15'.36 E) and the starboard lateral light buoy, *Fl.G.2·5s No1* (15° 27'.20 S 145° 15'.33 E) are unlit.

Chart temporarily affected - Aus 270

406(T)/2018 AUSTRALIA - QUEENSLAND - Gold Coast Seaway to Narrowneck Reef - Dredging operations
Maritime Safety Queensland

The dredge *Faucon* is conducting dredging operations between Gold Coast Seaway (27° 56'.2 S 153° 26'.1 E) and Narrowneck Reef (27° 59'.2 S 153° 26'.0 E) within 1.5M of the coast .

Vessel will monitor VHF Ch 16.

Mariners are advised to navigate with caution in the area.

Chart temporarily affected - Aus 230

407(T)/2018 AUSTRALIA - QUEENSLAND - Mackay Harbour - Harbour works completed

Former Notice - 752(T)/2017 is cancelled

Maritime Safety Queensland

Cancel this notice on receipt.

Chart formerly affected - Aus 250

408(T)/2018 AUSTRALIA - QUEENSLAND - Moreton Bay - Spitfire Channel - Scientific instruments

Maritime Safety Queensland

Subsurface scientific instruments marked by special light buoys, *Fl.Y.4.5s*, exist in the following positions:

27° 06'.00 S 153° 15'.60 E

27° 02'.13 S 153° 16'.77 E.

Chart temporarily affected - Aus 235 - Aus 236

409(T)/2018 AUSTRALIA - QUEENSLAND - Palm Beach to Gold Coast - Dredging operations complete

Former Notice - 471(T)/2017 is cancelled

Maritime Safety Queensland

Cancel this notice on receipt.

Chart formerly affected - Aus 230 - Aus 814

410(T)/2018 AUSTRALIA - QUEENSLAND - Torres Strait - Horn Island - Light unlit

Maritime Safety Queensland NTM 154(T)/2018

The light, *F&Iso.WRG* (10° 36'.17 S 142° 14'.40 E) is unlit.

Chart temporarily affected - Aus 293 - Aus 299

411(T)/2018 AUSTRALIA - QUEENSLAND - Weipa - Hey River - Exclusion zone

Former Notice - 840(T)/2017 is cancelled

Maritime Safety Queensland

Vessel *Jumbo Jubilee* is conducting transshipment operations in position 12° 44'.72 S 141° 53'.99 E.

A 350m exclusion zone exists.

Chart temporarily affected - Aus 4

412(P)/2018 PAPUA NEW GUINEA - Batumata Point - Shoaling

LADS Flight

Latest survey shows shoaler depths than those charted may exist in and around the islands and reefs in the area between Galovi (Howard) Reef (10° 11'.1 S 148° 08'.7 E) and Eunoro Island (10° 23'.6 S 149° 27.3 E).

Mariners are advised to navigate with caution in the area.

Charts will be updated in due course.

Chart which will be affected - Aus 506 - Aus 507 - Aus 623

413(T)/2018 AUSTRALIA - NORTHERN TERRITORY - Apsley Strait - Light buoy off station

Department of Infrastructure, Planning and Logistics NT Coastal Notice 1(T)/2018

The port lateral light buoy, *Fl.R.4s* (11° 45'.85 S 130° 39'.80 E), is off station.

Chart temporarily affected - Aus 23 - Aus 722

414(T)/2018 AUSTRALIA - NORTHERN TERRITORY - Bathurst Island - Survey and drilling operations

ConocoPhillips Australia

The vessel *Skandi Hercules* is conducting survey and drilling operations in an area bounded by the following positions:

9° 46'.2 S 130° 07'.9 E
 10° 42'.6 S 130° 14'.6 E
 11° 05'.9 S 129° 58'.4 E
 11° 18'.8 S 129° 55'.9 E
 12° 03'.4 S 129° 53'.5 E
 12° 03'.8 S 129° 55'.5 E
 11° 43'.0 S 129° 59'.0 E
 11° 16'.9 S 130° 00'.1 E
 11° 05'.9 S 130° 07'.9 E
 9° 46'.1 S 130° 30'.3 E.

Vessel will display appropriate lights and shapes and monitor VHF Ch 16.

Mariners are advised to navigate with caution in the area. 2M clearance requested.

Chart temporarily affected - Aus 22 - Aus 309 - Aus 310 - Aus 722

415(T)/2018 AUSTRALIA - NORTHERN TERRITORY - Darwin - Emery Point - Light relit*Former Notice* - 256(T)/2018 is cancelled

Department of Infrastructure, Planning and Logistics NT

Cancel this notice on receipt.

Chart formerly affected - Aus 24 - Aus 25 - Aus 26 - Aus 309 - Aus 722

416(T)/2018 AUSTRALIA - NORTHERN TERRITORY - Darwin - Preston Point - Light unlit*Former Notice* - 257(T)/2018 is cancelled

Department of Infrastructure, Planning and Logistics NT Notice 24(T)/2018

The light, *F.Bu & Fl.Y.2s L01A* (12° 30'.61 S 130° 53'.76 E) is unlit.

Chart temporarily affected - Aus 26 - Aus 28

417(T)/2018 AUSTRALIA - NORTHERN TERRITORY - Darwin - East Arm - Scientific instruments recovered*Former Notice* - 893(T)/2015 is cancelled

Department of Infrastructure, Planning and Logistics NT Notice 21(T)/2018

Cancel this notice on receipt.

Chart formerly affected - Aus 26 - Aus 28 - AX 00026T

418(T)/2018 AUSTRALIA - WESTERN AUSTRALIA - Bedout Islet - Drill rig northwestwards
 Quadrant Energy

Drill rig *ENSCO 107* is conducting drilling operations in position 19° 02'.01 S 118° 44'.03 E.

Chart temporarily affected - Aus 326 - Aus 739 - Aus 4722 (INT 722)

419(T)/2018 AUSTRALIA - WESTERN AUSTRALIA - Bluff Point - Fish aggregating devices recovered
Former Notice - 214(T)/2016 is cancelled
 Department of Transport WA

Cancel this notice on receipt.

Chart formerly affected - Aus 332

420(T)/2018 AUSTRALIA - WESTERN AUSTRALIA - Browse Island - Mooring buoy northwestwards
 Go Offshore

A yellow mooring buoy exists in position 14° 01'.10 S 123° 17'.09 E.

Chart temporarily affected - Aus 319 - Aus 320

421(T)/2018 AUSTRALIA - WESTERN AUSTRALIA - Dampier - Facilities Channel - Light relit
Former Notice - 336(T)/2018 is cancelled
 Pilbara Ports Authority

Cancel this notice on receipt.

Chart formerly affected - Aus 58 - Aus 59

422(T)/2018 AUSTRALIA - WESTERN AUSTRALIA - Eugene McDermott Shoal - Drilling operations completed
Former Notice - 220(T)/2018 is cancelled
 Australian Maritime Safety Authority

Cancel this notice on receipt.

Chart formerly affected - Aus 319

423(T)/2018 AUSTRALIA - WESTERN AUSTRALIA - Exmouth Gulf - Scientific instruments
 Subsea 7 , Department of Transport WA Notice 80/2018

Special light buoys, *Fl.Y.3s*, exist in positions 22° 12'.36 S 114° 10'.17 E and 21° 58'.80 S 114° 18'.55 E.

Chart temporarily affected - Aus 744 - Aus 745

424(T)/2018 AUSTRALIA - WESTERN AUSTRALIA - Muiron Islands - FPSO off station northwestwards
 Woodside Energy Ltd

The FPSO *Ngujima-Yin* (21° 26'.03 S 114° 04'.02 E) is off station; an obstruction with least depth 50m exists in situ.

Chart temporarily affected - Aus 328 - Aus 329 - Aus 744 - Aus 4723 (INT 723) - Aus 4725 (INT 725)

425(T)/2018 AUSTRALIA - WESTERN AUSTRALIA - Rankin Bank - Subsea operations
SPV Island Performer, Australian Maritime Safety Authority Auscoast Warning 103/2018

Vessel *Island Performer* is conducting subsea operations in an area bounded by the following positions:

19° 44'.1 S 115° 50'.2 E
 19° 42'.3 S 115° 48'.8 E
 19° 49'.7 S 115° 38'.4 E
 19° 51'.0 S 115° 39'.4 E.

Vessel will monitor VHF CH 16.

Mariners are advised to navigate with caution. 2.5M clearance requested.

Chart temporarily affected - Aus 327

426(T)/2018 AUSTRALIA - WESTERN AUSTRALIA - Rankin Bank - Cable operations complete
Former Notice - 303(T)/2018 is cancelled
 Australian Maritime Safety Authority

Cancel this notice on receipt.

Chart formerly affected - Aus 327

427(T)/2018 AUSTRALIA - SOUTH AUSTRALIA - Backstairs Passage - Cable operations
 Fugro, Department of Planning, Transport and Infrastructure SA Notice 13/2018

On or about 27 May, Vessel *Southern star* is conducting submarine cable laying operations between the following positions:

35° 43'.8 S 138° 00'.5 E
 35° 44'.7 S 138° 02'.1 E
 35° 38'.5 S 138° 07'.7 E
 35° 37'.5 S 138° 06'.1 E.

Mariners are advised to navigate with caution in the area. 500m clearance requested.

Chart temporarily affected - Aus 126 - Aus 347 - Aus 780

428(T)/2018 AUSTRALIA - VICTORIA - Port Phillip - Webb Dock - Light beacons unlit
 Victorian Ports Corporation (Melbourne) Notice 175(T)/2018

The following light beacons are unlit:

<i>Characteristic</i>	<i>Position</i>
<i>F.R & Fl.R.5s No84</i>	37° 50'.89 S 144° 54'.45 E
<i>F.R & Fl.R.5s No82</i>	37° 50'.98 S 144° 54'.47 E
<i>F.G & Iso.G.4s No23</i>	37° 50'.97 S 144° 54'.42 E

Chart temporarily affected - Aus 154

429(T)/2018 AUSTRALIA - VICTORIA - Western Port - Flinders Bight - Light buoy relit
Former Notice - 133(T)/2018 is cancelled
 Parks Victoria Notice 165/2018

Cancel this notice on receipt.

Chart formerly affected - Aus 150 - Aus 151

430(T)/2018 AUSTRALIA - TASMANIA - Hunter Island - Scientific instrument
 Marine and Safety Tasmania Notice M88/2018

A subsurface scientific instrument exists in position 40° 29'.18 S 144° 48'.76 E.

Chart temporarily affected - Aus 790

II

HYDROGRAPHIC REPORTS

NIL

III

NAVIGATION WARNINGS

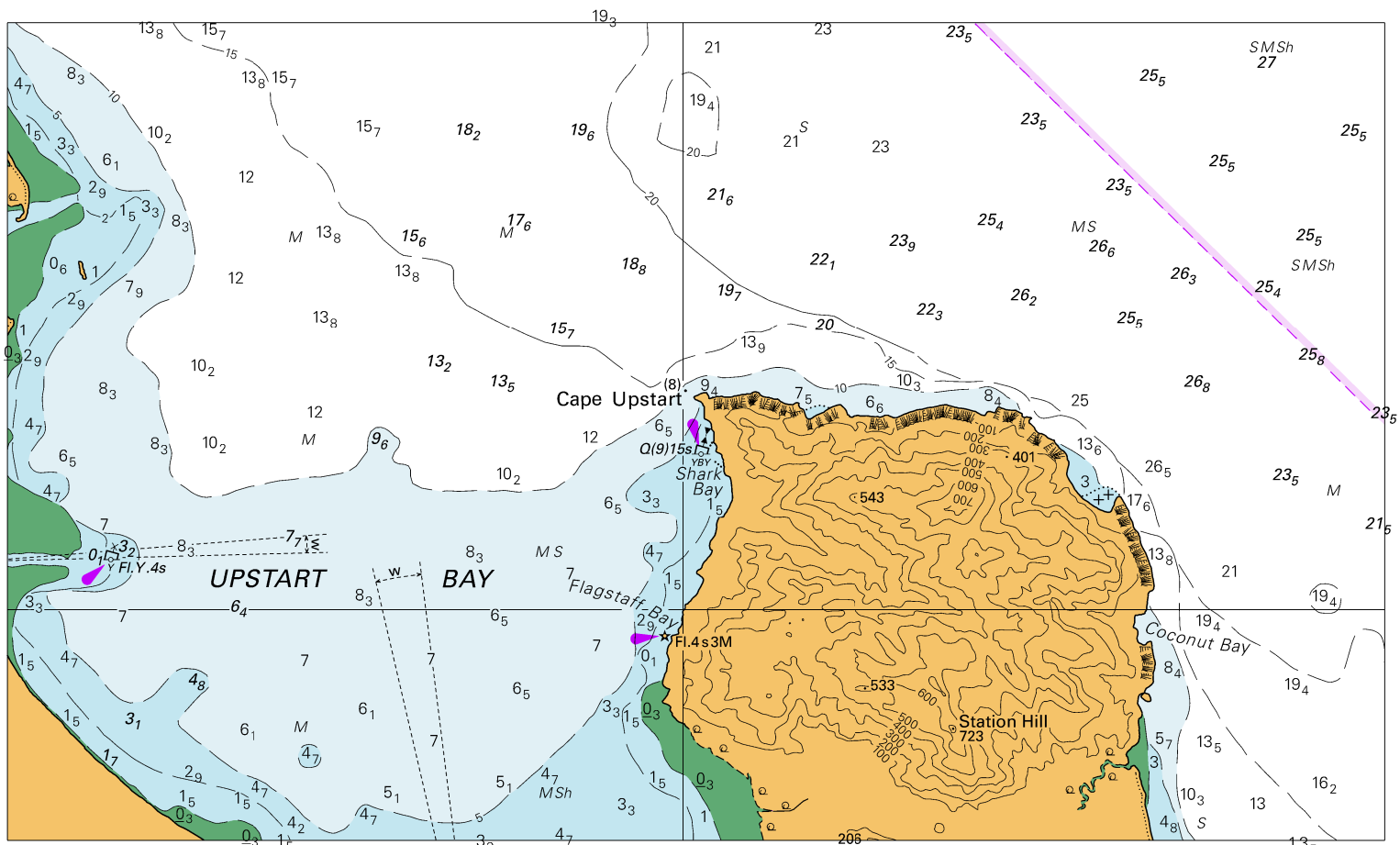
The Australian Hydrographic Office will no longer compile Section III of the Australian Notices to Mariners. For the most up to date navigation warnings please refer to:

AMSA Navigation Warnings

<http://amsa.gov.au/search-and-rescue/distress-and-safety-comms/msi/msi-email/index.asp>

New Zealand Notices to Mariners (Navarea XIV warnings)

<http://www.linz.govt.nz/sea/maritime-safety/notices-mariners>

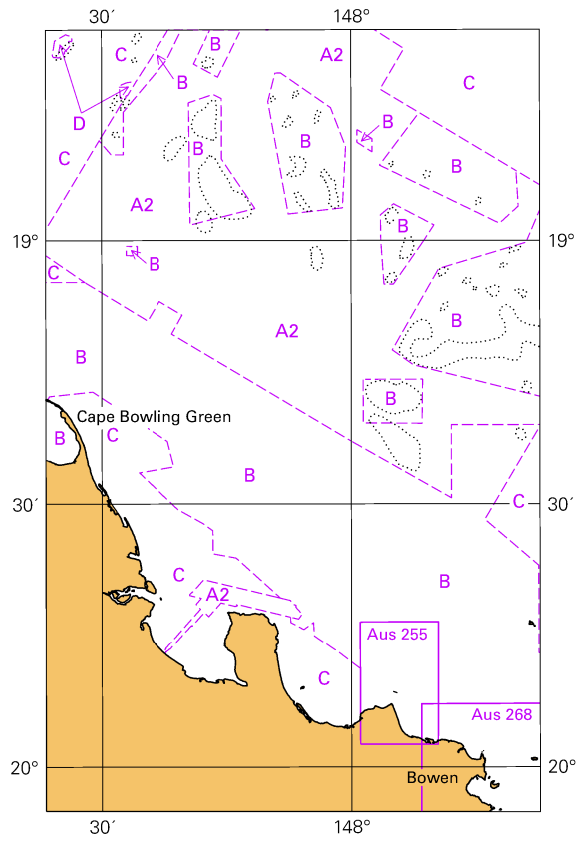


Block A for Chart Aus 826

© Commonwealth of Australia 2018

(198.6 x 117.8mm)

Zone of Confidence (ZOC) Diagram



© Commonwealth of Australia 2018
Block B for Chart Aus 826 (65.5 x 103.3mm)