



1 June 2018

Edition 11

AUSTRALIAN NOTICES TO MARINERS

Notices 431 - 472

Published fortnightly by the Australian Hydrographic Office



Australian Notices to Mariners are the authority for correcting charts and publications published by the Australian Hydrographic Office covering Australia, Papua New Guinea, Solomon Islands, Australian Antarctic Territory and Timor-Leste.

Commodore F.T. FREEMAN RAN
Hydrographer of Australia

SECTIONS.

- I. **Australian Notices to Mariners, including blocks and notes.**
- II. **Hydrographic Reports.**
- III. **Navigational Warnings.**

SUPPLEMENTS.

- I. **Tracings**
- II. **Cumulative List of Australian Notices to Mariners.**
- III. **Cumulative List of Temporary and Preliminary Australian Notices to Mariners.**
- IV. **Temporary and Preliminary Notices in force.**
- V. **Amendments to Admiralty List of Lights and Fog Signals (Vol K), Radio Signals (NP 281(2), 282, 283(2), 285, 286(4)) and Sailing Directions (NP 9, 13, 14, 15, 33, 34, 35, 36, 39, 44, 51, 60, 61, 62, 100, 136).**

© Commonwealth of Australia 2018

This work is copyright. Apart from any use permitted under the Copyright Act 1968, no part may be reproduced by any process, adapted, communicated or commercially exploited without prior written permission from The Commonwealth represented by the Australian Hydrographic Office.

IMPORTANT NOTICE

This edition of Notices to Mariners includes all significant information affecting AHO products which the AHO has become aware of since the last edition. All reasonable efforts have been made to ensure the accuracy and completeness of the information, including third party information, on which these updates are based. The AHO regards third parties from which it receives information as reliable, however the AHO cannot verify all such information and errors may therefore exist. The AHO does not accept liability for errors in third party information.

GENERAL INSTRUCTIONS

The substance of these notices should be inserted on the charts affected.

Bearings are referred to the true compass and are reckoned clockwise from North; those relating to lights are given as seen by an observer from seaward.

Positions quoted in notices relate to WGS84 which is the horizontal datum for all charts produced by the Australian Hydrographic Office.

The range quoted for a light is its nominal range.

Depths are with reference to the chart datum of each chart. Heights are above mean high water springs or mean higher high water, as appropriate.

The capital letter (P) or (T) after the number of any notice denotes a preliminary or temporary notice respectively, which are contained separately at the end of the permanent notices.

REPORTING OF DANGERS

Mariners are particularly requested to notify the AUSTRALIAN HYDROGRAPHIC OFFICE, Locked Bag 8801 Wollongong, NSW 2500 (Fax 02-4223 6599, e-mail datacentre@hydro.gov.au or, alternatively by filling in and submitting the [Hydrographic Notes](#) forms located on the web site – www.hydro.gov.au), immediately on the discovery of new dangers or suspected dangers to navigation. For changes or defects in aids to navigation notify AusSAR (Fax 02-6230 6868 or email rccaus@amsa.gov.au).

AUTHORISED USE

Copies of Australian notices are available free of charge from the Australian Hydrographic Office (AHO) website (www.hydro.gov.au) and through the eNotices (email) service (www.hydro.gov.au/enotices/enotices.htm).

Individual Notices may be copied for the purpose of inserting Notice substance on official charts and publications. Paper copies may be printed by chart agents and distributed to customers on a cost recovery basis. Participating chart agents are listed on the AHO website as providing a 'Paper Notices to Mariners' service (www.hydro.gov.au/webapps/jsp/agents/agents-list.jsp). Copies of the notices may not be sold for profit without prior written agreement.

NUMERICAL INDEX OF NOTICES TO MARINERS

Edition No 11

Notices	Aus Chart, INT Chart, ENC Cell, AHP, BA Pubs
431	Aus 255, SLB 102
432	Aus 240
433	Aus 249
434	Aus 236
435	Aus 252, 269, 824, 825
436	Aus 252, 253, 269, 824, 825
437	Aus 257
438	Aus 624
439	Aus 293, 296, 299
440	Aus 24, 25, 26, 28
441	Aus 314, 319
442	Aus 68
443	Aus 116
444	Aus 53, 54
445	Aus 52, 54
446	Aus 327
447	Aus 130, 137, 138
448	Aus 130, 137
449	Aus 181, 182
450	Aus 143
451(T)	Aus 193
452(T)	Aus 207, 208, 489, 809, 4643, INT 643
453(T)	Aus 268, 825, 826
454(T)	Aus 236, 237
455(T)	Aus 242
456(T)	Aus 235, 236
457(T)	Aus 250
458(T)	Aus 236
459(T)	Aus 235, 236
460(T)	Aus 673
461(T)	Aus 29, 309, 316, 722, 4721, INT 721
462(T)	Aus 64, 69, 743
463(T)	Aus 65, 66
464(T)	Aus 112, 754, 4725, INT 725
465(T)	Aus 111, 117
466(T)	Aus 754
467(T)	Aus 69
468(T)	Aus 54
469(T)	Aus 327, 328
470(T)	Aus 64, 328, 743, 744
471(T)	Aus 357, 487
472(T)	Aus 154

NUMERICAL INDEX OF CHARTS AFFECTED

Edition No 11

Aus Chart	Notices
Aus 24	440
Aus 25	440
Aus 26	440
Aus 28	440
Aus 29	461(T)
Aus 52	445
Aus 53	444
Aus 54	444, 445, 468(T)
Aus 64	462(T), 470(T)
Aus 65	463(T)
Aus 66	463(T)
Aus 68	442
Aus 69	462(T), 467(T)
Aus 111	465(T)
Aus 112	464(T)
Aus 116	443
Aus 117	465(T)
Aus 130	447, 448
Aus 137	447, 448
Aus 138	447
Aus 143	450
Aus 154	472(T)
Aus 181	449
Aus 182	449
Aus 193	451(T)
Aus 207	452(T)
Aus 208	452(T)
Aus 235	456(T), 459(T)
Aus 236	434, 454(T), 456(T), 458(T), 459(T)
Aus 237	454(T)
Aus 240	432
Aus 242	455(T)
Aus 249	433
Aus 250	457(T)
Aus 252	435, 436
Aus 253	436
Aus 255	431
Aus 257	437
Aus 268	453(T)
Aus 269	435, 436
Aus 293	439
Aus 296	439
Aus 299	439
Aus 309	461(T)
Aus 314	441
Aus 316	461(T)
Aus 319	441
Aus 327	446, 469(T)
Aus 328	469(T), 470(T)
Aus 357	471(T)
Aus 487	471(T)
Aus 489	452(T)
Aus 624	438
Aus 673	460(T)

Aus Chart	Notices
Aus 722	461(T)
Aus 743	462(T), 470(T)
Aus 744	470(T)
Aus 754	464(T), 466(T)
Aus 809	452(T)
Aus 824	435, 436
Aus 825	435, 436, 453(T)
Aus 826	453(T)
Aus 4643	452(T)
Aus 4721	461(T)
Aus 4725	464(T)
SLB 102	431

INT Chart	Notices
INT 643	452(T)
INT 721	461(T)
INT 725	464(T)

431 AUSTRALIA - Products - New Charts, New Editions, Withdrawn Charts

Australian Hydrographic Office

New Charts

Chart	Title and Geographical limits	Scale	Publication Date	Remarks
NIL				

New Electronic Navigation Chart (Aus ENC)

Cell Name	Title	Publication Date	Remarks
NIL			

New Editions and Withdrawn Charts

Chart	Title	Scale	Publication Date	Remarks
AUS 255 Edition 6	Australia - East Coast - Queensland - Approaches to Abbot Point Plans: Abbot Point Wharf	1:25 000 1:12 500	1st June 2018	New Edition to incorporate latest bathymetric data Chart Aus 255 Edition 5 dated 4 July 2014 is now superseded and must be withdrawn from use.
SLB 102 Edition 2	South Pacific Ocean - Solomon Islands - Plans in the New Georgia Group Plans: Ringgi Cove Blackett Strait Lever Harbour Port Noro Gizo Harbour and Approaches	 1:15 000 1:50 000 1:7 500 1:20 000 1:25 000	18th May 2018	New Edition to incorporate latest bathymetric data Chart SLB 102 Edition 1 dated 11 August 2017 is now superseded and must be withdrawn from use.

Chart permanently withdrawn

Charts listed above as withdrawn no longer meet chart carriage requirements and should be marked as "superseded" and replaced with the new chart/ new edition listed prior to passage through the area covered by the new chart.

When placing orders with a chart agent between notice of forthcoming edition and its publication, mariners should advise whether their order pertains to the current edition or the new edition.

For further details refer to the AHS website at www.hydro.gov.au for new edition and new chart stock arrival information.

432 AUSTRALIA - QUEENSLAND - Great Sandy Strait - Snout Point - Marine farm

Maritime Safety Queensland

Aus 240 [4/2018]

Insert	marine farm symbol with legend, (see Note), centred on accompanying note	25° 42'.60 S 25° 56'.6 S	152° 58'.29 E 152° 55'.9 E
--------	--	-----------------------------	-------------------------------

433 AUSTRALIA - QUEENSLAND - Mackay - Pioneer River - Light beacon

Maritime Safety Queensland

Aus 249 [236/2018]

Replace	light buoy with port lateral light beacon, Fl.R.2-5s, with topmark	21° 09'.0 S	149° 13'.2 E
---------	--	-------------	--------------

434 AUSTRALIA - QUEENSLAND - Moreton Bay - Mud Island - Nav aids
 Maritime Safety Queensland

Aus 236 [345/2018]

Insert	starboard lateral pillar light buoy, <i>Fl.G.2·5s</i> , with topmark	27° 20'.52 S	153° 13'.60 E
	west cardinal pillar light buoy, <i>Q(9) 15s</i> , with topmark	27° 19'.91 S	153° 13'.95 E
	starboard lateral pillar light buoy, <i>Fl.G.2·5s</i> , with topmark	27° 21'.44 S	153° 15'.36 E
Delete	light beacon	27° 21'.0 S	153° 14'.6 E
	light beacon	27° 20'.5 S	153° 13'.8 E
	beacon	27° 19'.9 S	153° 14'.0 E
	light buoy	27° 19'.7 S	153° 14'.3 E
	light buoy	27° 20'.9 S	153° 15'.9 E
	beacon	27° 21'.0 S	153° 15'.3 E
	depth, 4 ₆ m	27° 21'.4 S	153° 15'.3 E

435 AUSTRALIA - QUEENSLAND - Pioneer Bay - Anchorage area

Maritime Safety Queensland Notice 75/2018

Aus 252 [241/2018]

Insert	anchorage area	20° 13'.83 S	148° 42'.20 E
		20° 14'.63 S	148° 44'.21 E
		20° 12'.88 S	148° 44'.99 E
		20° 12'.08 S	148° 42'.97 E
		20° 13'.83 S	148° 42'.20 E

Delete	anchorage area	20° 14'.6 S	148° 43'.0 E
		20° 14'.6 S	148° 44'.8 E
		20° 13'.2 S	148° 44'.8 E
		20° 13'.2 S	148° 43'.0 E
		20° 14'.6 S	148° 43'.0 E
	anchorage symbol	20° 13'.9 S	148° 43'.9 E

Aus 269 (plan, Airlie Beach) [722/2017]

Insert	anchorage area limit, between	20° 13'.900 S	148° 42'.372 E
		20° 14'.627 S	148° 44'.207 E
		20° 13'.900 S	148° 44'.530 E

Delete	anchorage area limit, between	20° 13'.90 S	148° 43'.00 E
		20° 14'.60 S	148° 43'.00 E
		20° 14'.60 S	148° 44'.75 E
		20° 13'.90 S	148° 44'.75 E

Aus 824 [1060/2017]

Insert	anchorage area	20° 13'.83 S	148° 42'.20 E
		20° 14'.63 S	148° 44'.21 E
		20° 12'.88 S	148° 44'.99 E
		20° 12'.08 S	148° 42'.97 E
		20° 13'.83 S	148° 42'.20 E

Delete	anchorage area	20° 14'.6 S	148° 43'.0 E
		20° 14'.6 S	148° 44'.8 E
		20° 13'.2 S	148° 44'.8 E
		20° 13'.2 S	148° 43'.0 E
		20° 14'.6 S	148° 43'.0 E
	anchorage symbol	20° 13'.9 S	148° 43'.9 E

Aus 825 [596/2017]

Insert	anchorage area	20° 13'.83 S	148° 42'.20 E
		20° 14'.63 S	148° 44'.21 E
		20° 12'.88 S	148° 44'.99 E
		20° 12'.08 S	148° 42'.97 E
		20° 13'.83 S	148° 42'.20 E

Delete	anchorage area	20° 14'.6 S	148° 43'.0 E
		20° 14'.6 S	148° 44'.8 E
		20° 13'.2 S	148° 44'.8 E
		20° 13'.2 S	148° 43'.0 E
		20° 14'.6 S	148° 43'.0 E

436 AUSTRALIA - QUEENSLAND - Pioneer Bay - Depths

Maritime Safety Queensland

Aus 252 [435/2018]

Insert	depth, 7 ₂ m	20° 13'.75 S	148° 44'.17 E
	depth, 6 ₅ m	20° 13'.53 S	148° 43'.19 E
Delete	depth, 8 ₁ m	20° 13'.1 S	148° 43'.0 E
	depth, 6m	20° 13'.8 S	148° 43'.3 E
	depth, 6 ₅ m	20° 14'.2 S	148° 43'.9 E
	depth, 8 ₉ m	20° 13'.4 S	148° 44'.1 E

Aus 253 [241/2018]

Insert	accompanying block A	20° 13'.40 S	148° 43'.51 E
	accompanying block B	20° 18'.38 S	148° 52'.52 E

Aus 269 (plan, Airlie Beach) [435/2018]

Insert	accompanying block in E border	20° 15'.7 S	148° 45'.2 E
	depth, 6 ₂ m	20° 13'.980 S	148° 42'.721 E
	depth, 6 ₂ m	20° 14'.027 S	148° 42'.853 E
	depth, 5 ₇ m	20° 14'.030 S	148° 42'.988 E
	depth, 6 ₂ m	20° 13'.923 S	148° 43'.100 E
	depth, 6 ₅ m	20° 13'.919 S	148° 43'.810 E
Delete	depth, 6 ₂ m	20° 14'.05 S	148° 42'.91 E
	depth, 6 ₃ m	20° 14'.01 S	148° 43'.09 E
	depth, 6 ₆ m	20° 13'.95 S	148° 43'.90 E
	depth, 6 ₁ m	20° 13'.96 S	148° 42'.76 E

Aus 824 [435/2018]

Insert	depth, 7 ₂ m	20° 13'.76 S	148° 44'.17 E
Delete	depth, 8 ₉ m	20° 13'.5 S	148° 44'.1 E
	depth, 6 ₅ m	20° 14'.2 S	148° 43'.9 E

Aus 825 [435/2018]

Insert	depth, 7 ₂ m	20° 13'.76 S	148° 44'.17 E
Delete	depth, 8 ₉ m	20° 13'.5 S	148° 44'.1 E
	depth, 6 ₅ m	20° 14'.2 S	148° 43'.9 E

437 AUSTRALIA - QUEENSLAND - Townsville - Light buoy withdrawn

Port of Townsville Limited

Aus 257 [273/2018]

Delete	light buoy	19° 15'.15 S	146° 49'.96 E
--------	------------	--------------	---------------

438 PAPUA NEW GUINEA - Alotau - Lights

National Maritime Safety Authority PNG

Aus 624 (plan, Alotau) [1349/2015]

Insert	light, Q.R.9m 10M	10° 18'.637 S	150° 27'.112 E
Delete	light and emanating sector with legend R	10° 18'.60 S	150° 27'.13 E

439 AUSTRALIA - TORRES STRAIT - Thursday Island - Light

Former Notice - 410(T)/2018 is cancelled
Maritime Safety Queensland

Aus 293 [282/2018]

Replace	legend, Dir 094·2°, with legend, <i>Dir 094·1°</i>	10° 34'.42 S	142° 08'.76 E
---------	--	--------------	---------------

Amend	light to WRG	10° 34'.70 S	142° 12'.47 E
-------	--------------	--------------	---------------

Aus 296 [640/2016]

Replace	legend, Dir F.WRG 094·2°, with legend, <i>Dir WRG 094·1°</i>	10° 34'.42 S	142° 08'.76 E
---------	--	--------------	---------------

Aus 299 [282/2018]

Replace	legend, Dir 094·2°, with legend, <i>Dir 094·1°</i>	10° 34'.42 S	142° 08'.76 E
---------	--	--------------	---------------

Amend	light to WRG	10° 34'.70 S	142° 12'.47 E
-------	--------------	--------------	---------------

440 AUSTRALIA - NORTHERN TERRITORY - Darwin - Wrecks

Australian Hydrographic Office

Aus 24 [348/2018]

Insert	accompanying note	12° 27'.05 S	130° 50'.43 E
--------	-------------------	--------------	---------------

Replace	legend Obsn, with magenta legend <i>Historic Wk (see Note)</i>	12° 28'.52 S	130° 49'.76 E
	legend Wk, with magenta legend <i>Historic Wk (see Note)</i>	12° 28'.98 S	130° 50'.37 E
	legend Wk, with magenta legend <i>Historic Wk (see Note)</i>	12° 28'.88 S	130° 51'.08 E

Aus 25 [148/2018]

Replace	wreck, 6 ₃ , with wreck, 5 ₉	12° 18'.46 S	130° 48'.92 E
	dangerous wreck, with depth, 12 ₉ enclosed by danger circle, with legend Wk	12° 26'.56 S	130° 46'.70 E

Aus 26 [348/2018]

Replace	dangerous wreck, with depth, 12 ₉ enclosed by danger circle with legend Wk	12° 26'.56 S	130° 46'.70 E
---------	---	--------------	---------------

Aus 28 [348/2018]

Insert	accompanying note	12° 28'.65 S	130° 55'.30 E
--------	-------------------	--------------	---------------

Replace	legend Wk, with magenta legend <i>Historic Wk (see Note)</i>	12° 28'.98 S	130° 50'.37 E
	legend Wk, with magenta legend <i>Historic Wk (see Note)</i>	12° 29'.92 S	130° 52'.64 E
	legend Wk, with magenta legend <i>Historic Wk (see Note)</i>	12° 28'.88 S	130° 51'.08 E

441 AUSTRALIA - TIMOR SEA - Vulcan Shoal - Cautionary area northeastwards

Australian Maritime Safety Authority

Aus 314 [394/2018]

Insert	magenta dashed line, between	12° 38'.70 S	124° 30'.31 E
		12° 38'.07 S	124° 30'.62 E
		12° 37'.58 S	124° 31'.09 E
		12° 37'.23 S	124° 31'.67 E
		12° 37'.03 S	124° 32'.38 E
		12° 37'.03 S	124° 33'.06 E
		12° 37'.20 S	124° 33'.67 E
		12° 37'.49 S	124° 34'.18 E
		12° 37'.89 S	124° 34'.64 E
		12° 38'.35 S	124° 34'.94 E
Delete	magenta dashed line, between	12° 38'.7 S	124° 30'.3 E
		12° 38'.4 S	124° 34'.9 E

Aus 319 [394/2018]

Insert	magenta dashed line, between	12° 38'.70 S	124° 30'.31 E
		12° 38'.07 S	124° 30'.62 E
		12° 37'.58 S	124° 31'.09 E
		12° 37'.23 S	124° 31'.67 E
		12° 37'.03 S	124° 32'.38 E
		12° 37'.03 S	124° 33'.06 E
		12° 37'.20 S	124° 33'.67 E
		12° 37'.49 S	124° 34'.18 E
		12° 37'.89 S	124° 34'.64 E
		12° 38'.35 S	124° 34'.94 E
Delete	magenta dashed line, between	12° 38'.7 S	124° 30'.3 E
		12° 38'.4 S	124° 34'.9 E

442 AUSTRALIA - WESTERN AUSTRALIA - Cape Preston - Scientific instruments

RPS Group

*On certain copies only***Aus 68 (plan, Cape Preston) [408/2017]**

Insert	depth, 12 ₂ m	20° 49'.432 S	116° 11'.227 E
	depth, 8 ₉ m	20° 49'.575 S	116° 11'.395 E
Delete	depth, 8 ₅ m enclosed by danger circle with legend ODAS	20° 49'.56 S	116° 11'.39 E
	depth, 10 ₅ m enclosed by danger circle with legend ODAS	20° 49'.66 S	116° 11'.10 E
	depth, 12 ₅ m enclosed by danger circle with legend ODAS	20° 49'.42 S	116° 11'.22 E

443 AUSTRALIA - WESTERN AUSTRALIA - Mandurah - Bridge; nav aids; harbour works complete*Former Notice - 843(T)/2016 is cancelled*

Department of Transport

Aus 116 (plan, Entrance to Mandurah Estuary) [152/2018]

Insert	accompanying block	32° 32'.05 S	115° 43'.05 E
--------	--------------------	--------------	---------------

444 AUSTRALIA - WESTERN AUSTRALIA - Port Hedland - Chart note

Australian Hydrographic Office

Aus 53 [969/2017]

Insert	accompanying note	20° 17'.51 S	118° 23'.73 E
--------	-------------------	--------------	---------------

Aus 54 [901/2017]

Insert	accompanying note	20° 19'.31 S	118° 35'.91 E
--------	-------------------	--------------	---------------

445 AUSTRALIA - WESTERN AUSTRALIA - Port Hedland - Nav aids; Dredge limit

Pilbara Ports Authority

Aus 52 [200/2018]

Insert	accompanying block	20° 19'.8 S	118° 35'.4 E
--------	--------------------	-------------	--------------

Aus 54 [444/2018]

Insert	accompanying block	20° 19'.8 S	118° 35'.4 E
--------	--------------------	-------------	--------------

446 AUSTRALIA - WESTERN AUSTRALIA - Rankin Bank - Cautionary area; nav aids

Woodside Energy Ltd

Aus 327 [1081/2017]

Insert	accompanying block	19° 38'.0 S	116° 05'.0 E
--------	--------------------	-------------	--------------

447 AUSTRALIA - SOUTH AUSTRALIA - Port Adelaide - Depths; infrastructure

HydroSurvey Australia

Aus 130 [156/2018]

Insert	accompanying block	34° 46'.8 S	138° 28'.3 E
--------	--------------------	-------------	--------------

Aus 137 [396/2018]

Insert	accompanying block A	34° 47'.3 S	138° 27'.5 E
	accompanying block B	34° 46'.4 S	138° 28'.9 E

Aus 138 [154/2018]

Insert	accompanying block	34° 47'.3 S	138° 27'.5 E
--------	--------------------	-------------	--------------

448 AUSTRALIA - SOUTH AUSTRALIA - Port Adelaide - North Haven - Depth

HydroSurvey Australia

Aus 130 [447/2018]

Insert	contour, between	34° 47'.656 S	138° 28'.863 E
		34° 47'.639 S	138° 28'.786 E
		34° 47'.596 S	138° 28'.839 E

Delete	contour, between	34° 47'.66 S	138° 28'.86 E
		34° 47'.60 S	138° 28'.84 E

Aus 137 [447/2018]

Insert	depth, 1 ₃ m, enclosed by contour	34° 47'.635 S	138° 28'.793 E
--------	--	---------------	----------------

Replace	depth 3 ₆ m, with depth, 3 ₃ m	34° 47'.70 S	138° 28'.73 E
---------	--	--------------	---------------

449 AUSTRALIA - VICTORIA - Port Albert Entrance - Depths

Gippsland Ports

Aus 181 [1249/2016]

Insert	accompanying block	38° 44'.700 S	146° 41'.329 E
--------	--------------------	---------------	----------------

Aus 182 (plan, Approaches to Port Albert) [204/2018]

Insert	accompanying block	38° 44'.32 S	146° 41'.37 E
--------	--------------------	--------------	---------------

450 AUSTRALIA - VICTORIA - Port Phillip - Patterson River - Light ranges reduced

Parks Victoria Notice 180/2018

Aus 143 (plan, Patterson River) [354/2018]

Amend	light range to 2M	38° 04'.38 S	145° 07'.18 E
	light range to 2M	38° 04'.42 S	145° 07'.19 E

451(T)/2018 AUSTRALIA - NEW SOUTH WALES - Jervis Bay - Bowen Island - Light buoy recovered

Former Notice - 286(T)/2018 is cancelled
Australian Maritime Safety Authority

Cancel this notice on receipt.

Chart formerly affected - Aus 193

452(T)/2018 AUSTRALIA - NEW SOUTH WALES - Newcastle - Nobbys Head - Light range restored

Former Notice - 211(T)/2018 is cancelled
Australian Maritime Safety Authority

Cancel this notice on receipt.

Chart formerly affected - Aus 207 - Aus 208 - Aus 489 - Aus 809 - Aus 4643 (INT 643)

453(T)/2018 AUSTRALIA - QUEENSLAND - Bowen - Kings Beach - Military exercise

Department of Defence

A military exercise is being conducted in the vicinity of position 19° 59'.38 S 148° 17'.76 E from 27 May to 12 June 2018.

Vessels will monitor VHF Ch 16.

Mariners are advised to navigate with caution in the area.

Chart temporarily affected - Aus 268 - Aus 825 - Aus 826

454(T)/2018 AUSTRALIA - QUEENSLAND - Brisbane River - Inner Bar Reach - Light buoy

Former Notice - 160(T)/2018 is cancelled
Maritime Safety Queensland Notice 170(T)/2018

A special cylindrical light buoy, *Fl. Y. 4s*, exists in position 27° 21'.56 S 153° 10'.34 E.

Chart temporarily affected - Aus 236 - Aus 237

455(T)/2018 AUSTRALIA - QUEENSLAND - Bundaberg - Burnett River - Light beacon

Maritime Safety Queensland Notice 178(T)/2018

A light beacon, *Fl. G. 4s*, exists in position 24° 45'.26 S 152° 23'.87 E.

Chart temporarily affected - Aus 242

456(T)/2018 AUSTRALIA - QUEENSLAND - Flinders Reef - Light buoy off station

Maritime Safety Queensland Notice 185(T)/2018

The north cardinal light buoy, VQ (26° 58'.22 S 153° 29'.46 E), is off station.

Chart temporarily affected - Aus 235 - Aus 236

457(T)/2018 AUSTRALIA - QUEENSLAND - Mackay - Scientific instrument

Maritime Safety Queensland Notice 179(T)/2018

A subsurface scientific instruments exists in position 21° 06'.42 S 149° 13'.61 E.

Chart temporarily affected - Aus 250

458(T)/2018 AUSTRALIA - QUEENSLAND - Moreton Bay - Scarborough - Light beacon restored

Former Notice - 986(T)/2017 is cancelled
Maritime Safety Queensland

Cancel this notice on receipt.

Chart formerly affected - Aus 236

459(T)/2018 AUSTRALIA - QUEENSLAND - Moreton Bay - North West Channel - Shoaling

Maritime Safety Queensland Notice 182/2018

Shoaling has occurred in North West Channel as follows:

<i>Position</i>	<i>Depth</i>
27° 00'.34 S 153° 14'.44 E	14.8m
27° 00'.04 S 153° 14'.46 E	14.9m

Mariners are advised to navigate with caution in the area.

Chart temporarily affected - Aus 235 - Aus 236

460(T)/2018 PAPUA NEW GUINEA - Nessup Island - Light buoy off station

National Maritime Safety Authority PNG , B Cooper

The starboard lateral light buoy, *Fl.G.2s* (5° 53'.92 S 148° 09'.05 E), is off station.

Chart temporarily affected - Aus 673

461(T)/2018 AUSTRALIA - NORTHERN TERRITORY - Fish Reef - Light unlit

Department of Infrastructure, Planning and Logistics NT Notice 2(T)/2018

The light, *LFl.WR.10s 10m 10/8M* (12° 25'.93 S 130° 26'.56 E) is unlit.

Chart temporarily affected - Aus 29 - Aus 309 - Aus 316 - Aus 722 - Aus 4721 (INT 721)

462(T)/2018 AUSTRALIA - WESTERN AUSTRALIA - Ashburton Road - Mooring buoys recovered

Former Notice - 88(T)/2016 is cancelled
Chevron Australia Pty Ltd

Cancel this notice on receipt.

Chart formerly affected - Aus 64 - Aus 69 - Aus 743

463(T)/2018 AUSTRALIA - WESTERN AUSTRALIA - Barrow Island - Town Point - Survey operations

Chevron Australia Pty Ltd Notice 2/2018

Vessels *Outer Limit* and *Gannet* are conducting survey operations at the materials offloading facility (20 47'.74 S 115 28'.83 E), and between the following positions:

20° 48'.27 S 115° 29'.12 E
20° 50'.74 S 115° 28'.87 E
and

20° 48'.95 S 115° 29'.54 E
20° 49'.68 S 115° 30'.75 E

Chart temporarily affected - Aus 65 - Aus 66

464(T)/2018 AUSTRALIA - WESTERN AUSTRALIA - Fremantle - Cable operations completed

Former Notice - 337(T)/2018 is cancelled
Australian Maritime Safety Authority

Cancel this notice on receipt.

Chart formerly affected - Aus 112 - Aus 754 - Aus 4725 (INT 725)

465(T)/2018 AUSTRALIA - WESTERN AUSTRALIA - Garden Island - Harbour works complete

Former Notice - 373(T)/2018 is cancelled
Department of Transport WA

Cancel this notice on receipt.

Chart formerly affected - Aus 111 - Aus 117

466(T)/2018 AUSTRALIA - WESTERN AUSTRALIA - Ledge Point - Scientific instrument recovered

Former Notice - 341(T)/2017 is cancelled
Department of Transport WA

Cancel this notice on receipt.

Chart formerly affected - Aus 754

467(T)/2018 AUSTRALIA - WESTERN AUSTRALIA - Onslow - Beadon Creek - Scientific instrument recovered

Former Notice - 935(T)/2017 is cancelled
Department of Transport WA

Cancel this notice on receipt.

Chart formerly affected - Aus 69

468(T)/2018 AUSTRALIA - WESTERN AUSTRALIA - Port Hedland - Anderson Point Wharf - Dredging operations

Pilbara Ports Authority Notice PH 11(T)/2018

The dredge *Eastern Aurora* and support vessels are conducting dredging operations in the vicinity of position 20° 19'.77 S 118° 35'.14 E.

Floating and submerged pipelines marked by special light buoys, *Fl.Y.5s*, exist in the area.

Vessels will display appropriate lights and shapes and monitor VHF Ch 12 and Ch 16.

Mariners are advised to navigate with caution in the area.

Chart temporarily affected - Aus 54

469(T)/2018 AUSTRALIA - WESTERN AUSTRALIA - Rankin Bank - Subsea operations complete

Former Notice - 375(T)/2018 is cancelled
Australian Maritime Safety Authority

Cancel this notice on receipt.

Chart formerly affected - Aus 327 - Aus 328

470(T)/2018 AUSTRALIA - WESTERN AUSTRALIA - Thevenard Island - Lights altered

Department of Transport WA Notice 87/2018

Lights have been temporarily altered as follows:

<i>Position</i>	<i>Characteristics</i>
21° 31'.33 S 114° 58'.16 E	<i>Mo(U)15s</i>
21° 29'.36 S 114° 59'.39 E	<i>Mo(U)15s</i>
21° 28'.76 S 115° 00'.47 E	<i>Mo(U)15s</i>

Chart temporarily affected - Aus 64 - Aus 328 - Aus 743 - Aus 744

471(T)/2018 AUSTRALIA - VICTORIA - Bass Strait - Restricted areas

National Offshore Petroleum Safety and Environmental Management Authority

Restricted areas with a 500m radius have been established in positions 38° 36'.00 S 148° 34'.98 E and 38° 36'.73 S 148° 31'.33 E.

Chart temporarily affected - Aus 357 - Aus 487

472(T)/2018 AUSTRALIA - VICTORIA - Port Phillip - Webb Dock - Light beacons relit

Former Notice - 428(T)/2018 is cancelled

Victorian Ports Corporation (Melbourne) Notice 178(T)/2018

Cancel this notice on receipt.

Chart formerly affected - Aus 154

HYDROGRAPHIC REPORTS

<i>Locality</i>	<i>Report</i>	<i>Ship/Authority</i>	<i>Observer</i>
PNG- Nessup Island	Light Buoy Off Station		B Cooper
TAS- Pot Island	Landmark		A Boon

III

NAVIGATION WARNINGS

The Australian Hydrographic Office will no longer compile Section III of the Australian Notices to Mariners. For the most up to date navigation warnings please refer to:

AMSA Navigation Warnings

<http://amsa.gov.au/search-and-rescue/distress-and-safety-comms/msi/msi-email/index.asp>

New Zealand Notices to Mariners (Navarea XIV warnings)

<http://www.linz.govt.nz/sea/maritime-safety/notices-mariners>

To accompany Australian Notice to Mariners 432/2018

MARINE FARMS

Marine farms, which may be floating or fixed structures and their associated moorings should be avoided. The farms are generally marked by buoys or beacons, which may be lit. Their charted positions are approximate.

Note for chart Aus 240

To accompany Australian Notice to Mariners 440/2018

HISTORIC WRECK

The site of an historic wreck is protected from unauthorised interference. For details see Seafarers Handbook for Australian Waters AHP 20.

Note for chart Aus 28

To accompany Australian Notice to Mariners 444/2018

DREDGED AREAS

Depths in dredged areas, although generally maintained, may be less than charted. For the latest information, consult the Harbour Master.

Note for chart Aus 54

To accompany Australian Notice to Mariners 440/2018

HISTORIC WRECK

The site of an historic wreck is protected from unauthorised interference. For details see Seafarers Handbook for Australian Waters AHP 20.

Note for chart Aus 24

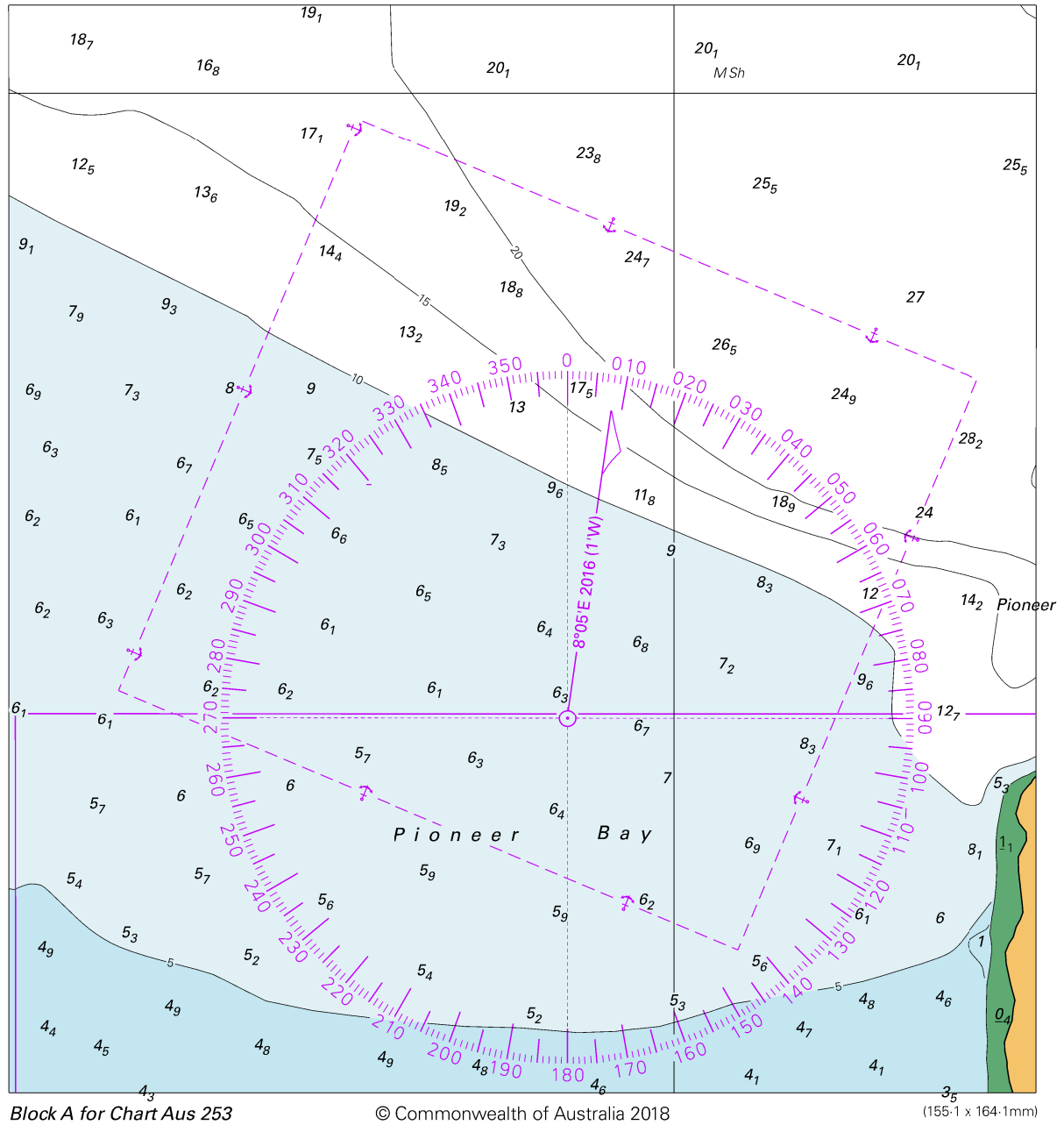
To accompany Australian Notice to Mariners 444/2018

DREDGED AREAS

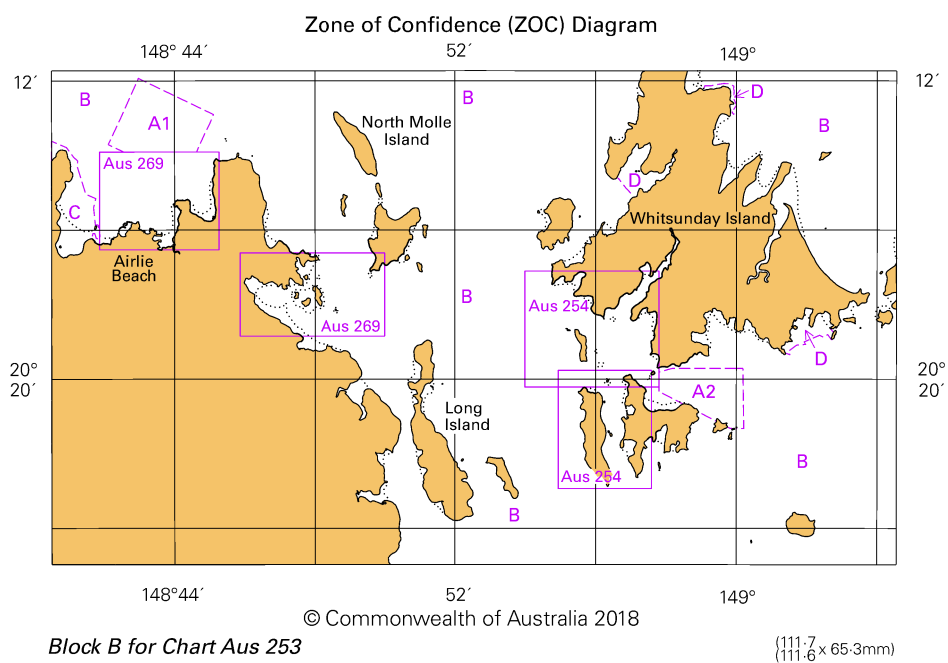
Depths in dredged areas, although generally maintained, may be less than charted. For the latest information, consult the Harbour Master.

Note for chart Aus 53

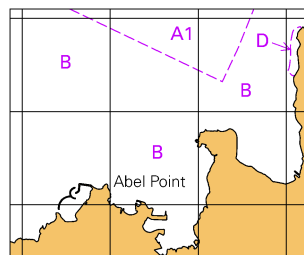
To accompany Australian Notice to Mariners 436/2018



To accompany Australian Notice to Mariners 436/2018



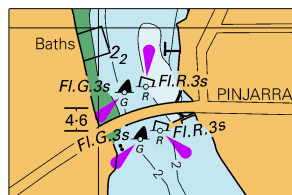
To accompany Australian Notice to Mariners 436/2018



© Commonwealth of Australia 2018

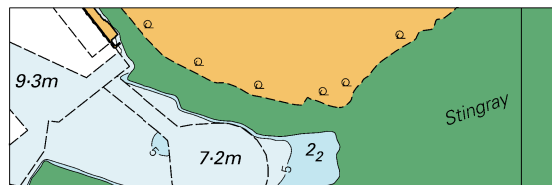
Block for Chart Aus 269 (39.4 x 32.6mm)

To accompany Australian Notice to Mariners 443/2018



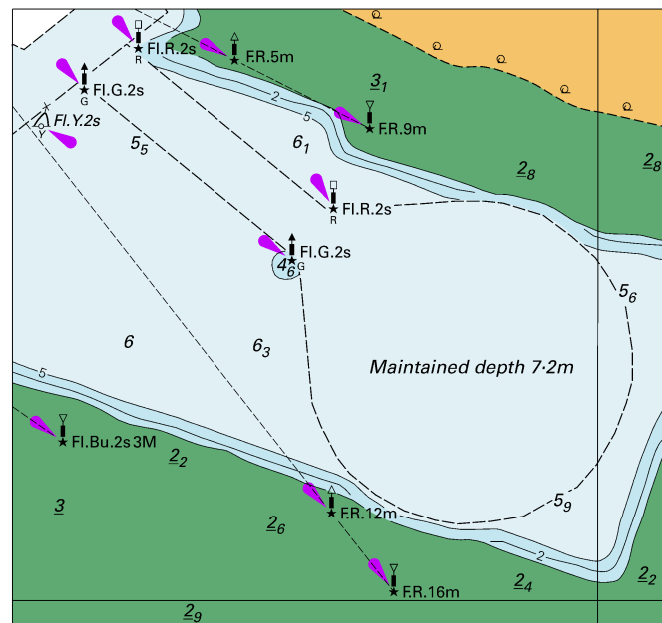
© Commonwealth of Australia 2018
Block for Chart Aus 116 (38.3 x 24.7mm)

To accompany Australian Notice to Mariners 445/2018



© Commonwealth of Australia 2018
Block for Chart Aus 52 (72.7 x 23.7mm)

To accompany Australian Notice to Mariners 445/2018

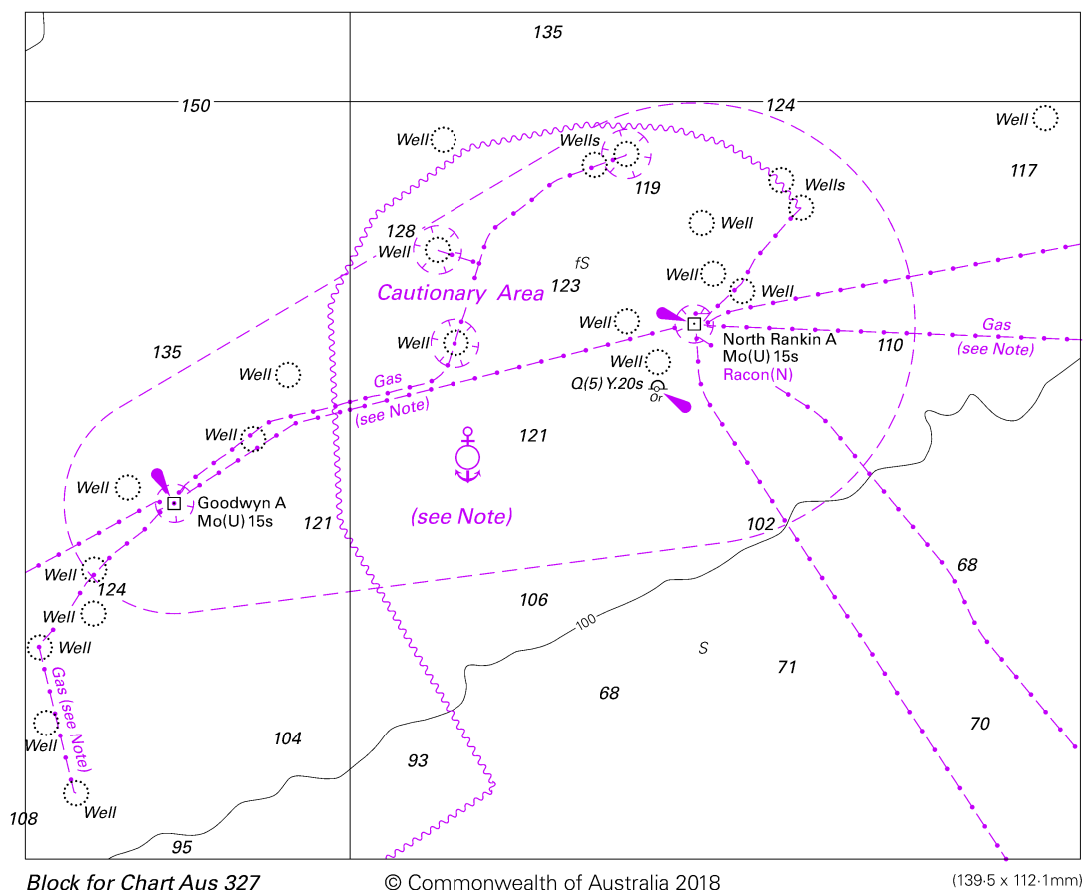


© Commonwealth of Australia 2018

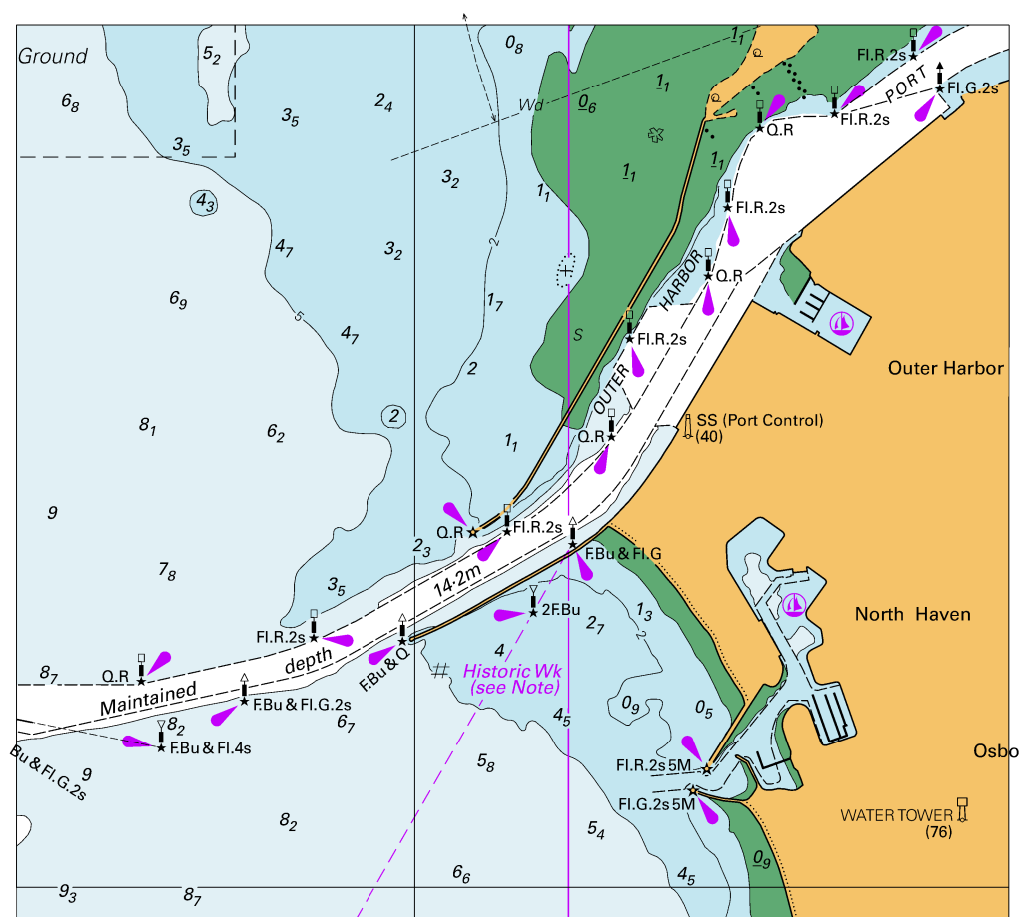
Block for Chart Aus 54

(87.5 x 81.8mm)

To accompany Australian Notice to Mariners 446/2018



To accompany Australian Notice to Mariners 447/2018

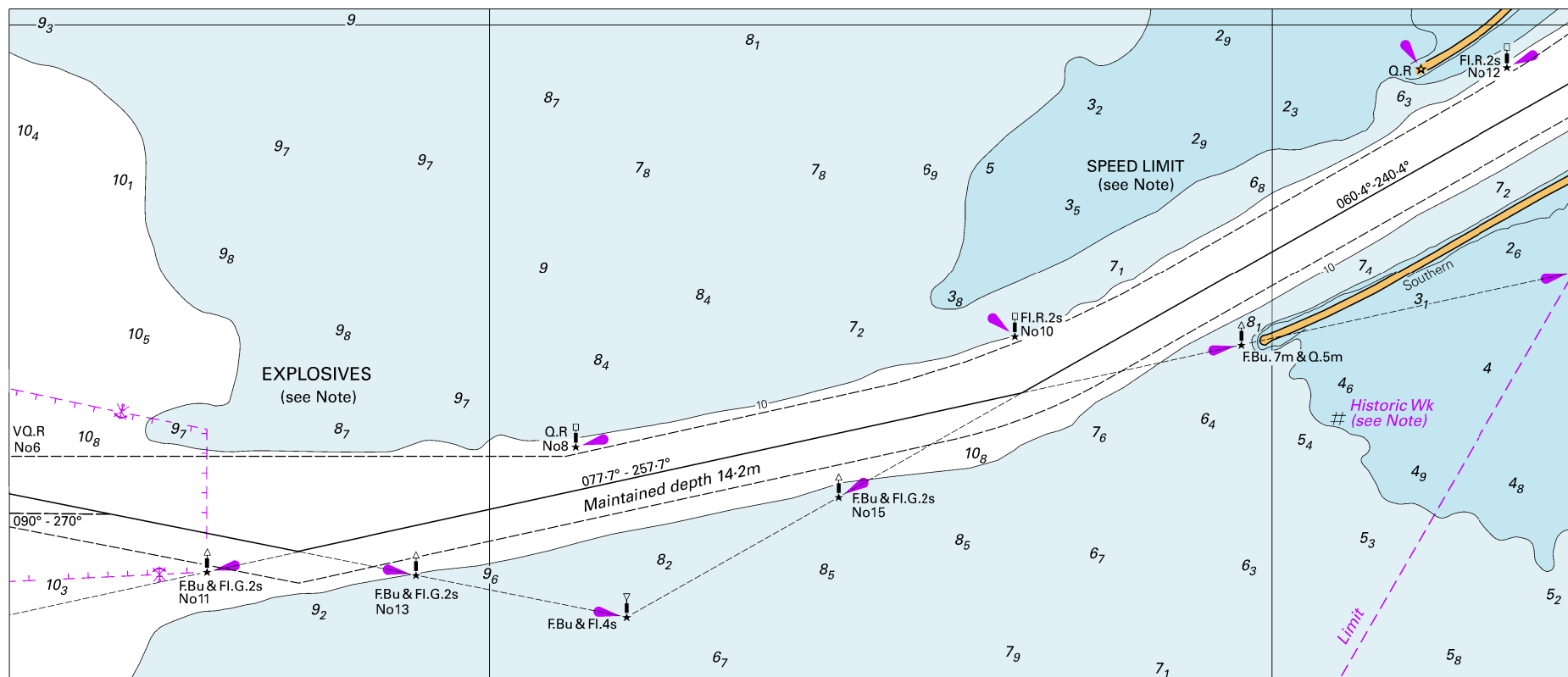


Block for Chart Aus 130

© Commonwealth of Australia 2018

(131.2 x 118.5mm)

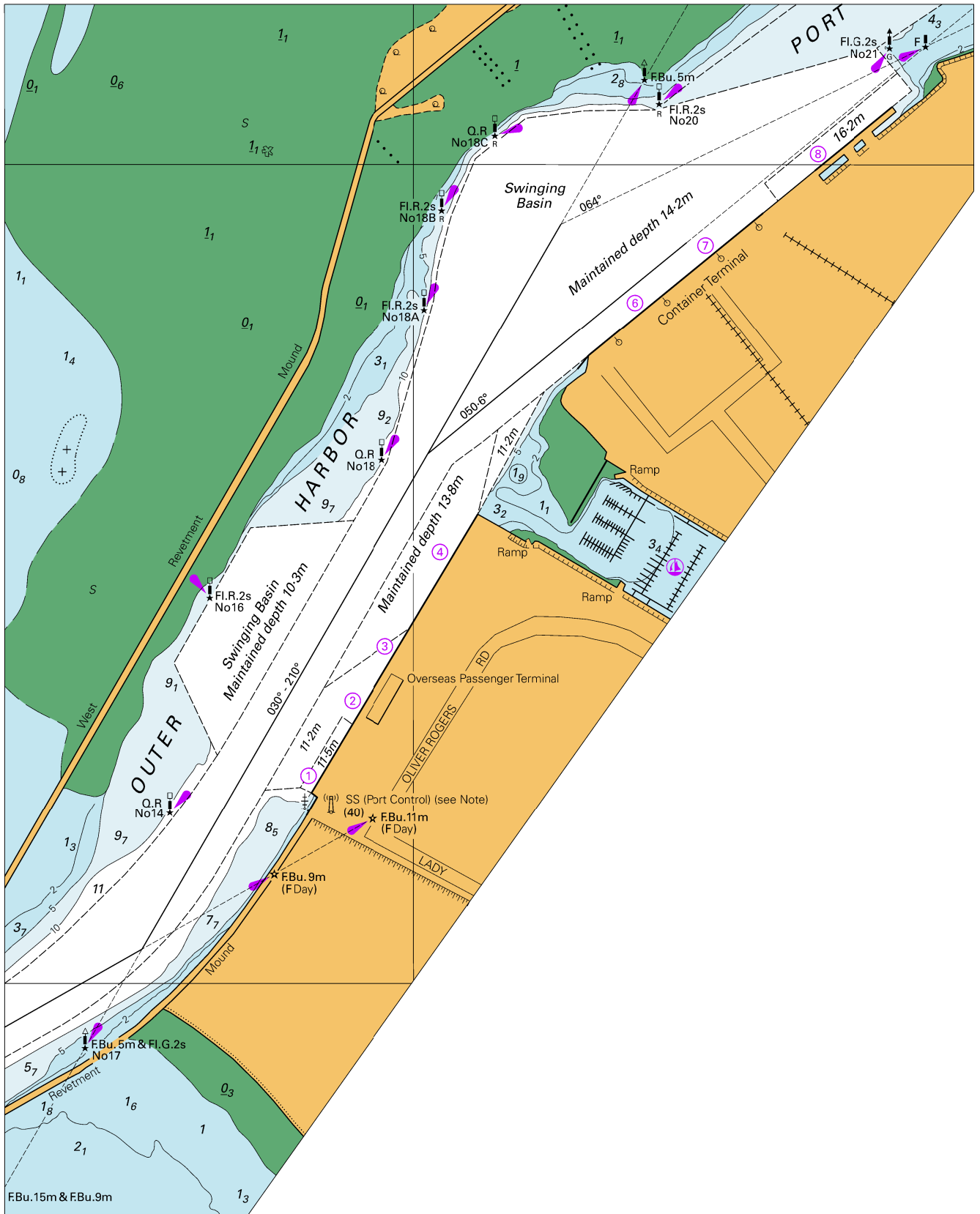
To accompany Australian Notice to Mariners 447/2018



Block A for Chart Aus 137

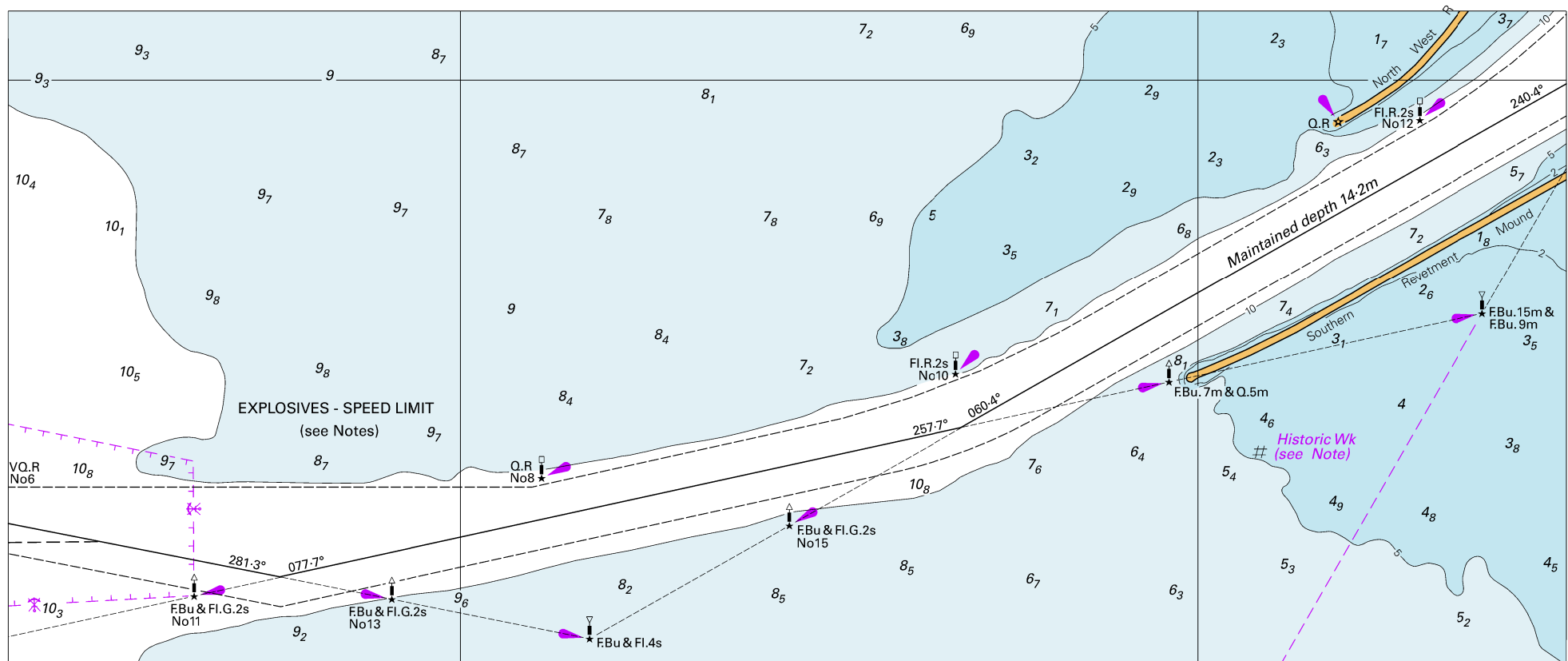
© Commonwealth of Australia 2018

(245 x 104.6mm)



Block B for Chart Aus 137

To accompany Australian Notice to Mariners 447/2018

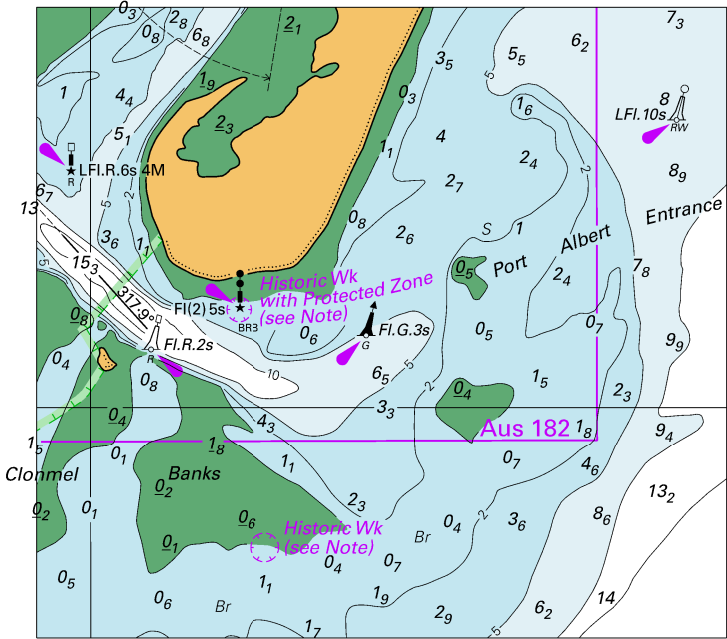


Block for Chart Aus 138

© Commonwealth of Australia 2018

(258.0 x 107.6mm)

To accompany Australian Notice to Mariners 449/2018

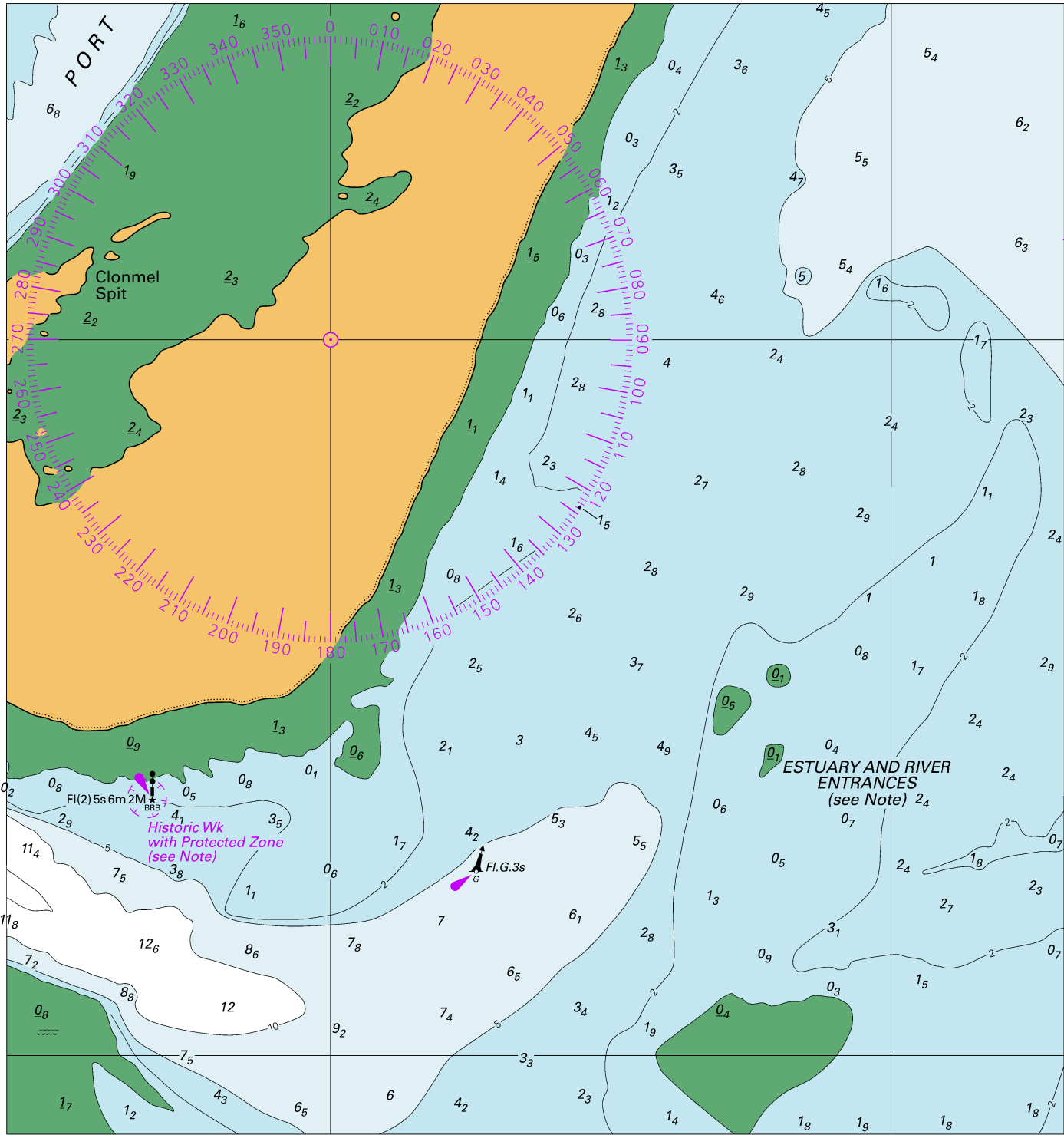


© Commonwealth of Australia 2018

Block for Chart Aus 181

(91.3 x 83.4mm)

To accompany Australian Notice to Mariners 449/2018



Block for Chart Aus 182

© Commonwealth of Australia 2018

(182.4 x 194.9mm)