



15 June 2018

Edition 12

AUSTRALIAN NOTICES TO MARINERS

Notices 473 - 505

Published fortnightly by the Australian Hydrographic Office



Australian Notices to Mariners are the authority for correcting charts and publications published by the Australian Hydrographic Office covering Australia, Papua New Guinea, Solomon Islands, Australian Antarctic Territory and Timor-Leste.

Commodore F.T. FREEMAN RAN
Hydrographer of Australia

SECTIONS.

- I. **Australian Notices to Mariners, including blocks and notes.**
- II. **Hydrographic Reports.**
- III. **Navigational Warnings.**

SUPPLEMENTS.

- I. **Tracings**
- II. **Cumulative List of Australian Notices to Mariners.**
- III. **Cumulative List of Temporary and Preliminary Australian Notices to Mariners.**
- IV. **Temporary and Preliminary Notices in force.**
- V. **Amendments to Admiralty List of Lights and Fog Signals (Vol K), Radio Signals (NP 281(2), 282, 283(2), 285, 286(4)) and Sailing Directions (NP 9, 13, 14, 15, 33, 34, 35, 36, 39, 44, 51, 60, 61, 62, 100, 136).**

© Commonwealth of Australia 2018

This work is copyright. Apart from any use permitted under the Copyright Act 1968, no part may be reproduced by any process, adapted, communicated or commercially exploited without prior written permission from The Commonwealth represented by the Australian Hydrographic Office.

IMPORTANT NOTICE

This edition of Notices to Mariners includes all significant information affecting AHO products which the AHO has become aware of since the last edition. All reasonable efforts have been made to ensure the accuracy and completeness of the information, including third party information, on which these updates are based. The AHO regards third parties from which it receives information as reliable, however the AHO cannot verify all such information and errors may therefore exist. The AHO does not accept liability for errors in third party information.

GENERAL INSTRUCTIONS

The substance of these notices should be inserted on the charts affected.

Bearings are referred to the true compass and are reckoned clockwise from North; those relating to lights are given as seen by an observer from seaward.

Positions quoted in notices relate to WGS84 which is the horizontal datum for all charts produced by the Australian Hydrographic Office.

The range quoted for a light is its nominal range.

Depths are with reference to the chart datum of each chart. Heights are above mean high water springs or mean higher high water, as appropriate.

The capital letter (P) or (T) after the number of any notice denotes a preliminary or temporary notice respectively, which are contained separately at the end of the permanent notices.

REPORTING OF DANGERS

Mariners are particularly requested to notify the AUSTRALIAN HYDROGRAPHIC OFFICE, Locked Bag 8801 Wollongong, NSW 2500 (Fax 02-4223 6599, e-mail datacentre@hydro.gov.au or, alternatively by filling in and submitting the [Hydrographic Notes](#) forms located on the web site – www.hydro.gov.au), immediately on the discovery of new dangers or suspected dangers to navigation. For changes or defects in aids to navigation notify AusSAR (Fax 02-6230 6868 or email rccaus@amsa.gov.au).

AUTHORISED USE

Copies of Australian notices are available free of charge from the Australian Hydrographic Office (AHO) website (www.hydro.gov.au) and through the eNotices (email) service (www.hydro.gov.au/enotices/enotices.htm).

Individual Notices may be copied for the purpose of inserting Notice substance on official charts and publications. Paper copies may be printed by chart agents and distributed to customers on a cost recovery basis. Participating chart agents are listed on the AHO website as providing a 'Paper Notices to Mariners' service (www.hydro.gov.au/webapps/jsp/agents/agents-list.jsp). Copies of the notices may not be sold for profit without prior written agreement.

NUMERICAL INDEX OF NOTICES TO MARINERS

Edition No 12

Notices	Aus Chart, INT Chart, ENC Cell, AHP, BA Pubs
473	Aus 4, 37, 740
474	Aus 197, 198, 489, 808
475	Aus 194, 195, 489, 808, 4643, INT 643
476	Aus 831, 4620, INT 620
477	Aus 238
478	Aus 258, 828, 829
479	Aus 244, 245
480	Aus 253, 269
481	Aus 642, 643, 646
482	Aus 25, 722
483	Aus 74
484	Aus 72
485	Aus 113
486	Aus 53, 739, 740
487	Aus 130, 485, 781
488	Aus 126, 780
489	Aus 144, 158
490(T)	Aus 207, 209, 219, 489, 809, 810, 4643, INT 643
491(T)	Aus 191, 807, 4643, INT 643
492(T)	Aus 268, 825, 826
493(T)	Aus 268, 825, 826
494(T)	Aus 238
495(T)	Aus 267
496(T)	Aus 248, 367, 820
497(T)	Aus 253, 269
498(T)	Aus 269
499(P)	Aus 505, 621
500(T)	Aus 52, 53, 54, 739, 740
501(T)	Aus 52, 53
502(T)	Aus 52, 53, 54, 739, 740
503(T)	Aus 357
504(T)	Aus 169
505(T)	Aus 172

NUMERICAL INDEX OF CHARTS AFFECTED

Edition No 12

Aus Chart	Notices
Aus 4	473
Aus 25	482
Aus 37	473
Aus 52	500(T), 501(T), 502(T)
Aus 53	486, 500(T), 501(T), 502(T)
Aus 54	500(T), 502(T)
Aus 72	484
Aus 74	483
Aus 113	485
Aus 126	488
Aus 130	487
Aus 144	489
Aus 158	489
Aus 169	504(T)
Aus 172	505(T)
Aus 191	491(T)
Aus 194	475
Aus 195	475
Aus 197	474
Aus 198	474
Aus 207	490(T)
Aus 209	490(T)
Aus 219	490(T)
Aus 238	477, 494(T)
Aus 244	479
Aus 245	479
Aus 248	496(T)
Aus 253	480, 497(T)
Aus 258	478
Aus 267	495(T)
Aus 268	492(T), 493(T)
Aus 269	480, 497(T), 498(T)
Aus 357	503(T)
Aus 367	496(T)
Aus 485	487
Aus 489	474, 475, 490(T)
Aus 505	499(P)
Aus 621	499(P)
Aus 642	481
Aus 643	481
Aus 646	481
Aus 722	482
Aus 739	486, 500(T), 502(T)
Aus 740	473, 486, 500(T), 502(T)
Aus 780	488
Aus 781	487
Aus 807	491(T)
Aus 808	474, 475
Aus 809	490(T)
Aus 810	490(T)
Aus 820	496(T)
Aus 825	492(T), 493(T)
Aus 826	492(T), 493(T)
Aus 828	478

Aus Chart	Notices
Aus 829	478
Aus 831	476
Aus 4620	476
Aus 4643	475, 490(T), 491(T)

INT Chart	Notices
INT 620	476
INT 643	475, 490(T), 491(T)

473 AUSTRALIA - Products- New Charts and New Editions to be published shortly

Australian Hydrographic Service

New Charts to be published shortly

<i>Chart</i>	<i>Title</i>	<i>Scale</i>	<i>Expected Publication Date</i>	<i>Remarks</i>
NIL				

New Editions to be published shortly

<i>Chart</i>	<i>Title</i>	<i>Scale</i>	<i>Expected Publication Date</i>	<i>Remarks</i>
AUS 740	Port Hedland to Port Walcott Plan: Depuch Island Anchorage	1:150 000 1:20 000	29 June 2018	New Edition to shift vertical datum from ISLW to LAT.
AUS 4	Approaches to Weipa Plan: Port of Weipa	1:75 000 1:15 000	29 June 2018	New Edition to incorporate latest bathymetric data.
AUS 37	Port Nelson and Prince Frederick Harbour	1:75 000	29 June 2018	New Edition to incorporate latest bathymetric data.

474 AUSTRALIA - NEW SOUTH WALES - Botany Bay - Historic wreck

Port Authority of New South Wales

Aus 197 [272/2018]

Insert	depth, 56m, enclosed by danger circle with magenta legend <i>Historic Wk</i> (see Note)	34° 01'.29 S	151° 15'.59 E
Delete	historic wreck	34° 01'.4 S	151° 15'.5 E

Aus 198 [310/2018]

Insert	depth, 56m, enclosed by danger circle with magenta legend <i>Historic Wk</i> (see Note)	34° 01'.291 S	151° 15'.593 E
Delete	historic wreck	34° 01'.38 S	151° 15'.54 E

Aus 489 [196/2017]

Delete	historic wreck	34° 01'.4 S	151° 15'.5 E
--------	----------------	-------------	--------------

Aus 808 [892/2017]

Insert	depth, 56m, enclosed by danger circle with magenta legend <i>Historic Wk</i> (see Note)	34° 01'.29 S	151° 15'.59 E
Delete	historic wreck	34° 01'.4 S	151° 15'.5 E

475 AUSTRALIA - NEW SOUTH WALES - Wollongong - Flagstaff Point - Light ranges amended

Australian Maritime Safety Authority AUSCOAST 130/2018

Aus 194 (plan, Wollongong Harbour) [94/2018]

Amend	light range to 20/14M	34° 25'.32 S	150° 54'.58 E
-------	-----------------------	--------------	---------------

Aus 195 [141/2018]

Amend	light range to 20/14M	34° 25'.32 S	150° 54'.58 E
-------	-----------------------	--------------	---------------

Aus 489 [474/2018]

Amend	light range to 20/14M	34° 25'.3 S	150° 54'.6 E
-------	-----------------------	-------------	--------------

Aus 808 [474/2018]

Amend	light range to 20/14M	34° 25'.3 S	150° 54'.6 E
-------	-----------------------	-------------	--------------

Aus 4643 (INT 643) [501/2017]

Amend	light range to 20/14M	34° 25'.3 S	150° 54'.6 E
-------	-----------------------	-------------	--------------

476 AUSTRALIA - QUEENSLAND - Archer Point - Light range amended

Australian Maritime Safety Authority AUSCOAST 128/18

Aus 831 [1172/2016]

Amend	light range to 19-13M	15° 35'.6 S	145° 19'.7 E
-------	-----------------------	-------------	--------------

Aus 4620 (INT 620) [959/2017]

Amend	light range to 19-13M	15° 35'.6 S	145° 19'.7 E
-------	-----------------------	-------------	--------------

477 AUSTRALIA - QUEENSLAND - Brisbane - Hamilton Reach - Light amended

Maritime Safety Queensland Notice 199/2018

Aus 238 [388/2018]

Amend	light to Q.Bu (F.Y Day)	27° 26'.96 S	153° 05'.04 E
-------	-------------------------	--------------	---------------

Aus 238 (plan, Hamilton Reach) [388/2018]

Amend	light to Q.Bu (F.Y Day)	27° 26'.96 S	153° 05'.04 E
-------	-------------------------	--------------	---------------

478 AUSTRALIA - QUEENSLAND - Dunk Island - DepthsHMAS *Mermaid* and HMAS *Paluma***Aus 258 (plan, Dunk Island) [273/2018]**

Insert	accompanying block A	17° 56'.5 S	146° 12'.5 E
	accompanying block B in E border	17° 59'.00 S	146° 13'.70 E

Aus 828 [277/2018]

Insert	accompanying block A	17° 59'.402 S	146° 11'.703 E
	accompanying block B	17° 57'.0 S	147° 28'.0 E

Aus 829 [240/2018]

Insert	accompanying block A	17° 59'.402 S	146° 11'.703 E
	accompanying block B	17° 58'.0 S	145° 52'.0 E

479 AUSTRALIA - QUEENSLAND - Gladstone - Quoin Channel - Light buoy withdrawn

Maritime Safety Queensland Notice 194/2018

Aus 244 [275/2018]

Delete	light buoy	23° 48'.74 S	151° 16'.40 E
--------	------------	--------------	---------------

Aus 245 [236/2018]

Delete	light buoy	23° 48'.74 S	151° 16'.40 E
--------	------------	--------------	---------------

480 AUSTRALIA - QUEENSLAND - Shute Harbour - Light beacon moved
Maritime Safety Queensland Notice 188/2018

Aus 253 [436/2018]

Move	light beacon	20° 17'.98 S	148° 47'.16 E
	to	20° 18'.003 S	148° 47'.160 E

Aus 269 (plan, Shute Harbour) [436/2018]

Move	light beacon	20° 17'.98 S	148° 47'.16 E
	to	20° 18'.003 S	148° 47'.160 E

481 PAPUA NEW GUINEA - Madang to Lae - Depths
HMAS *Melville*

Aus 642 [195/2018]

Insert	depth, 6 ₁ m, enclosed by contour	06° 44'.441 S	147° 00'.793 E
	depth, 12 ₇ m, enclosed by contour	06° 44'.912 S	146° 58'.225 E
	depth, 5 ₃ m, enclosed by contour	6° 44'.886 S	146° 58'.268 E

Replace	depth, 22 ₅ m, with depth, 18 ₆ m, enclosed by contour	06° 44'.46 S	146° 58'.71 E
	depth, 28 ₁ m, with depth, 14 ₇ m, enclosed by contour	06° 44'.79 S	146° 58'.40 E

Aus 643 [503/2017]

Insert	contour, between	6° 44'.51 S	146° 58'.68 E
		6° 44'.46 S	146° 58'.72 E
		6° 44'.43 S	146° 58'.67 E

Delete	contour, between	6° 44'.5 S	146° 58'.7 E
		6° 44'.4 S	146° 58'.7 E

Aus 646 (plan, Madang Harbour) [196/2018]

Insert	depth, 6 ₃ m, and extend 10m contour NW to enclose	05° 13'.037 S	145° 48'.184 E
--------	---	---------------	----------------

Replace	depth, 15 ₉ m, with depth, 9 ₂ m, enclosed by contour	05° 11'.57 S	145° 48'.79 E
---------	---	--------------	---------------

482 AUSTRALIA - NORTHERN TERRITORY - Darwin - Wrecks
Australian Hydrographic Office

Aus 25 [440/2018]

Replace	depth, 5 ₃ m, with depth 5 ₆ m	12° 18'.46 S	130° 48'.92 E
---------	--	--------------	---------------

Aus 722 [855/2017]

Delete	wreck	12° 28'.5 S	130° 48'.1 E
--------	-------	-------------	--------------

483 AUSTRALIA - WESTERN AUSTRALIA - Denham Channel - Wreck
Department of Biodiversity, Conservation and Attractions WA

Aus 74 [964/2017]

Insert	depth, 7m, enclosed by danger circle with legend <i>Wk</i>	25° 57'.55 S	113° 20'.14 E
--------	--	--------------	---------------

Delete	depth, 9 ₈ m	25° 57'.6 S	113° 20'.1 E
--------	-------------------------	-------------	--------------

484 AUSTRALIA - WESTERN AUSTRALIA - Exmouth Boat Harbour - Depths
Department of Transport WA

Aus 72 (plan, Mauds Landing) [58/2018]

Insert	accompanying block B	23° 09'.4 S	113° 48'.8 E
--------	----------------------	-------------	--------------

Aus 72 (plan, Exmouth Boat Harbour) [58/2018]

Insert	accompanying block A	21° 57'.3 S	114° 08'.7 E
--------	----------------------	-------------	--------------

485 AUSTRALIA - WESTERN AUSTRALIA - Fremantle - Light range increased

Department of Transport WA Notice 71/2018

Aus 113 [350/2018]

Amend	light range to 5M	32° 03'.91 S	115° 44'.41 E
	light range to 5M	32° 03'.85 S	115° 44'.47 E

486 AUSTRALIA - WESTERN AUSTRALIA - Port Hedland - Coxon Shoal - Light buoy northwards

Former Notice - 1393(T)/2015 is cancelled

Pilbara Ports Authority

Aus 53 [444/2018]

Insert	special spherical light buoy, Q.Y, without topmark	20° 00'.33 S	118° 26'.30 E
--------	--	--------------	---------------

Aus 739 [NE 9/2/2018]

Insert	special spherical light buoy, Q.Y, without topmark	20° 00'.33 S	118° 26'.30 E
--------	--	--------------	---------------

Aus 740 [351/2018]

Insert	special spherical light buoy, Q.Y, without topmark	20° 00'.33 S	118° 26'.30 E
--------	--	--------------	---------------

487 AUSTRALIA - SOUTH AUSTRALIA - Gulf St Vincent - Port Adelaide - Wreck westwards

Department of Planning, Transport and Infrastructure SA

Aus 130 [448/2018]

Insert	depth, 24m, enclosed by danger circle with legend Wk	34° 49'.366 S	138° 10'.237 E
--------	--	---------------	----------------

Aus 485 [397/2018]

Insert	depth, 24m, enclosed by danger circle with legend Wk	34° 49'.37 S	138° 10'.24 E
--------	--	--------------	---------------

Aus 781 [397/2018]

Insert	depth, 24m, enclosed by danger circle with legend Wk	34° 49'.37 S	138° 10'.24 E
--------	--	--------------	---------------

488 AUSTRALIA - SOUTH AUSTRALIA - Penguin Point; Port Victoria - Wrecks

Australian Hydrographic Office

Aus 126 (plan, Althorpe Islands) [509/2017]

Move	historic wreck	35° 15'.28 S	136° 58'.88 E
	to	35° 15'.08 S	136° 58'.73 E

Delete	underwater rock	35° 15'.1 S	136° 58'.7 E
--------	-----------------	-------------	--------------

Aus 780 [397/2018]

Move	historic wreck	35° 15'.28 S	136° 58'.88 E
	to	35° 15'.08 S	136° 58'.73 E

489 AUSTRALIA - VICTORIA - Port Phillip - Popes Eye Annulus - Light beacons

Parks Victoria Notice 187/2018

Aus 144 [105/2018]

Move	light beacon	38° 16'.481 S	144° 42'.152 E
	to	38° 16'.469 S	144° 42'.159 E

Delete	beacon	38° 17'.31 S	144° 43'.67 E
--------	--------	--------------	---------------

Aus 158 [354/2018]

Move	light beacon	38° 16'.481 S	144° 42'.152 E
	to	38° 16'.469 S	144° 42'.159 E

Delete	beacon	38° 17'.31 S	144° 43'.67 E
--------	--------	--------------	---------------

490(T)/2018 AUSTRALIA - NEW SOUTH WALES - Newcastle to Cape Hawke - Obstructions

Australian Maritime Safety Authority Auscoast Warning 133/2018

Due to 83 shipping containers lost overboard, obstructions on the seabed are likely to exist in an area bounded by the following positions:

33° 05'.0 S 152° 03'.0 E

32° 50'.0 S 151° 54'.0 E

32° 38'.0 S 152° 12'.5 E

32° 45'.0 S 152° 21'.5 E.

It is possible that obstructions on the seabed may exist in an area bounded by the following positions:

32° 45'.0 S 152° 21'.5 E

32° 38'.0 S 152° 12'.5 E

32° 08'.0 S 152° 33'.0 E

32° 20'.0 S 152° 51'.5 E.

Mariners are advised to navigate with caution in the area.

Chart temporarily affected - Aus 207 - Aus 209 - Aus 219 - Aus 489 - Aus 809 - Aus 810 - Aus 4643 (INT 643)

491(T)/2018 AUSTRALIA - NEW SOUTH WALES - Ulladulla - Warden Head - Light altered

NSW Roads and Maritime Services

The light, *Fl(2)10s 34m 14M* (35° 21'.93 S 150° 29'.46 E), has been altered to *Fl(2)10s 29.5m 5.7M*.

Chart temporarily affected - Aus 191 - Aus 807 - Aus 4643 (INT 643)

492(T)/2018 AUSTRALIA - QUEENSLAND - Bowen - Harbour works

Maritime Safety Queensland Notice 198(T)/2018

The barge *PMG 121* and support vessel *Swordfish* are conducting harbour works in the vicinity of position 20° 01'.37 S 148° 15'.03 E.

Vessels will display appropriate lights and shapes and monitor VHF Ch 12 and 16.

Mariners are advised to navigate with caution in the area.

Chart temporarily affected - Aus 268 - Aus 825 - Aus 826

493(T)/2018 AUSTRALIA - QUEENSLAND - Bowen - Kings Beach - Military exercise completed

Former Notice - 453(T)/2018 is cancelled

Australian Maritime Safety Authority

Cancel this notice on receipt.

Chart formerly affected - Aus 268 - Aus 825 - Aus 826

494(T)/2018 AUSTRALIA - QUEENSLAND - Brisbane River - Pinkenba Reach - Harbour works

Maritime Safety Queensland

Harbour works are being conducted in the vicinity of Incitec Pivot Wharf (27° 25'.86 S 153° 07'.41 E).

VHF Ch 12 will be monitored

Mariners are advised to navigate with caution in the area.

Chart temporarily affected - Aus 238

495(T)/2018 AUSTRALIA - QUEENSLAND - Hinchinbrook Channel - Light buoy off station

Maritime Safety Queensland Notice 187(T)/2018

The port lateral light buoy, *Q.R No18* (18° 30'.43 S 146° 19'.13 E), is currently in position 18° 30'.10 S 146° 18'.83 E.

Chart temporarily affected - Aus 267

496(T)/2018 AUSTRALIA - QUEENSLAND - Shoalwater Bay - Military exercise
HMAS Canberra

Military exercise will be conducted in the Shoalwater Bay training area during the period 12 to 27 June 2018.

A marine danger area extends to Freshwater Beach and approaches in the vicinity of position 22° 32'.13 S 151° 13'.29 E.

VHF CH 16 will be monitored.

Mariners are advised to keep clear of this area throughout the above times.

Chart temporarily affected - Aus 248 - Aus 367 - Aus 820

497(T)/2018 AUSTRALIA - QUEENSLAND - Shute Harbour - Light beacons destroyed

Former Notices - 426(T)/2017, 875(T)/2017 are cancelled

Maritime Safety Queensland Notices 155(T)/2017, 189/2018

The east cardinal light beacon, Q(3)10s (20° 17'.25 S 148° 48'.14 E), has been destroyed; east cardinal light buoy, Q(3)10s, exists in situ.

The light beacon, *Fl.R.3s No10* (20° 17'.65 S 148° 47'.15 E), has been destroyed.

Chart temporarily affected - Aus 253 - Aus 269

498(T)/2018 AUSTRALIA - QUEENSLAND - Shute Harbour - Obstructions removed

Former Notice - 670(T)/2017 is cancelled

Maritime Safety Queensland

Cancel this notice on receipt.

Chart formerly affected - Aus 269

499(P)/2018 PAPUA NEW GUINEA - Manubada Island to Padana Nahua Passage - Shoaling

Australian Hydrographic Office

Latest survey shows shoaler depths than those charted may exist in an area bounded by the following positions:

9°30'.58 S 147°11'.26 E
 9°30'.67 S 147°11'.21 E
 9°31'.85 S 147°12'.08 E
 9°32'.74 S 147°13'.58 E
 9°34'.32 S 147°17'.14 E
 9°33'.56 S 147°17'.88 E
 9°32'.44 S 147°15'.11 E
 9°32'.43 S 147°14'.66 E
 9°30'.95 S 147°11'.70 E

Mariners are advised to navigate with caution in the area.

Charts will be updated in due course.

Chart which will be affected - Aus 505 - Aus 621

500(T)/2018 AUSTRALIA - WESTERN AUSTRALIA - Finucane Island to Weerde Island - Scientific instruments recovered northwards

Former Notice - 939(T)/2016 is cancelled

Pilbara Ports Authority

Cancel this notice on receipt.

Chart formerly affected - Aus 52 - Aus 53 - Aus 54 - Aus 739 - Aus 740

501(T)/2018 AUSTRALIA - WESTERN AUSTRALIA - Port Hedland - Scientific instruments recovered

Former Notice - 844(T)/2017 is cancelled
Pilbara Ports Authority

Cancel this notice on receipt.

Chart formerly affected - Aus 52 - Aus 53

502(T)/2018 AUSTRALIA - WESTERN AUSTRALIA - Port Hedland - Dredging completed

Former Notice - 937(T)/2017 is cancelled
Pilbara Ports Authority

Cancel this notice on receipt.

Chart formerly affected - Aus 52 - Aus 53 - Aus 54 - Aus 739 - Aus 740

503(T)/2018 AUSTRALIA - VICTORIA - Ninety Mile Beach - Geotechnical survey

Esso Australia Pty Ltd

Vessel *MV Dryden* is conducting a geotechnical survey between 38° 17'.79 S 147° 40'.55 E and 38° 19'.10 S 147° 36'.87.

Chart temporarily affected - Aus 357

504(T)/2018 AUSTRALIA - TASMANIA - Blackman Bay - Wreck

Marine and Safety Tasmania Notice M91/2018

A wreck exists in positions 42° 53'.19 S 147° 49'.29 E.

Mariners are advised to navigate with caution in the area.

Chart temporarily affected - Aus 169

505(T)/2018 AUSTRALIA - TASMANIA - River Derwent - Montagu Bay - Wreck

Marine and Safety Tasmania Notice M98/2018

A wreck exists in position 42° 51'.98 S 147° 21'.15 E.

Mariners are advised to navigate with caution in the area.

Chart temporarily affected - Aus 172

II

HYDROGRAPHIC REPORTS

NIL

III

NAVIGATION WARNINGS

The Australian Hydrographic Office will no longer compile Section III of the Australian Notices to Mariners. For the most up to date navigation warnings please refer to:

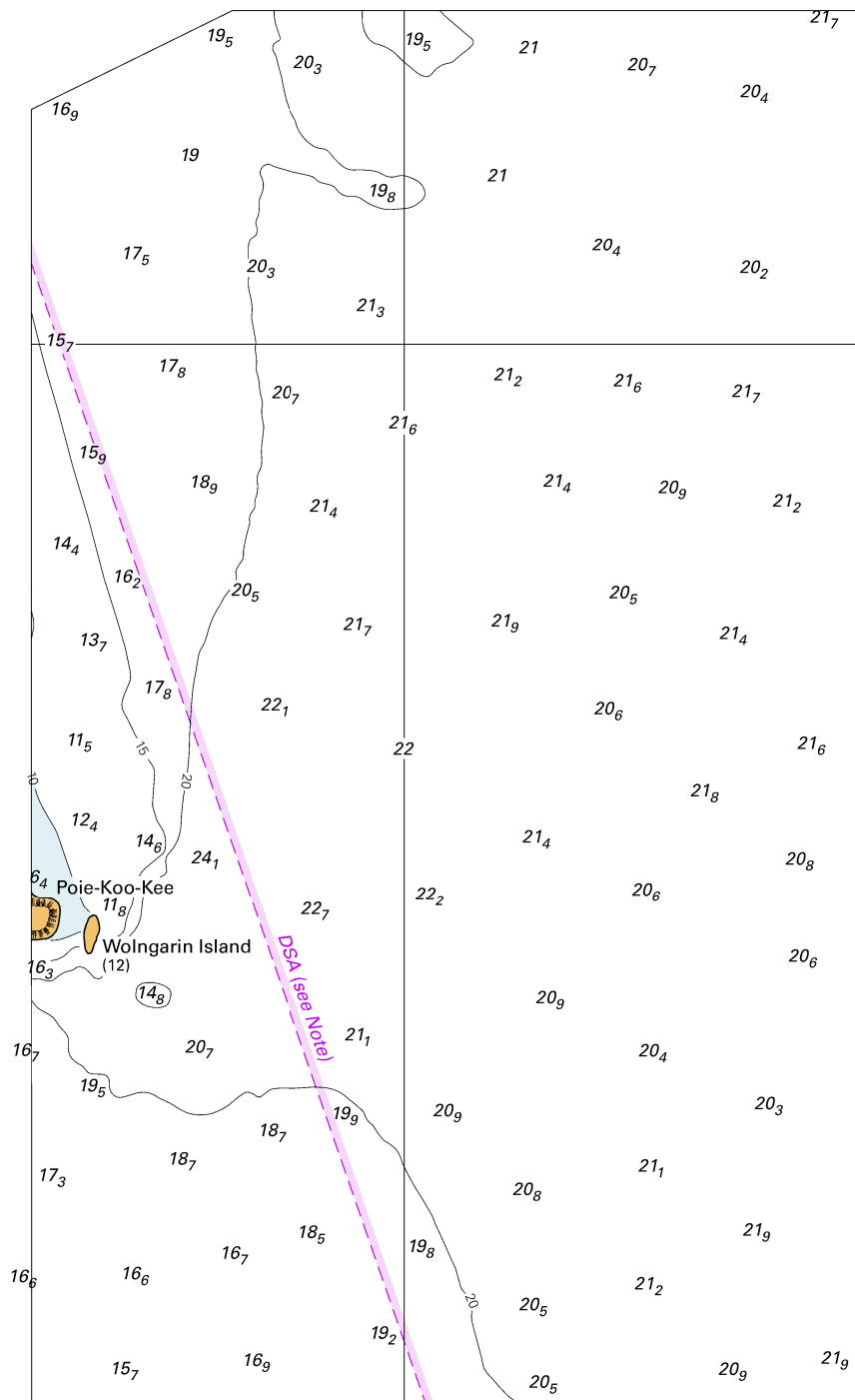
AMSA Navigation Warnings

<http://amsa.gov.au/search-and-rescue/distress-and-safety-comms/msi/msi-email/index.asp>

New Zealand Notices to Mariners (Navarea XIV warnings)

<http://www.linz.govt.nz/sea/maritime-safety/notices-mariners>

To accompany Australian Notice to Mariners 478/2018



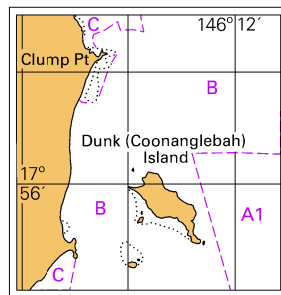
© Commonwealth of Australia 2018

Block A for Chart Aus 258

(82.8 x 184.4mm)
(109.4 x 184.4mm)

To accompany Australian Notice to Mariners 478/2018

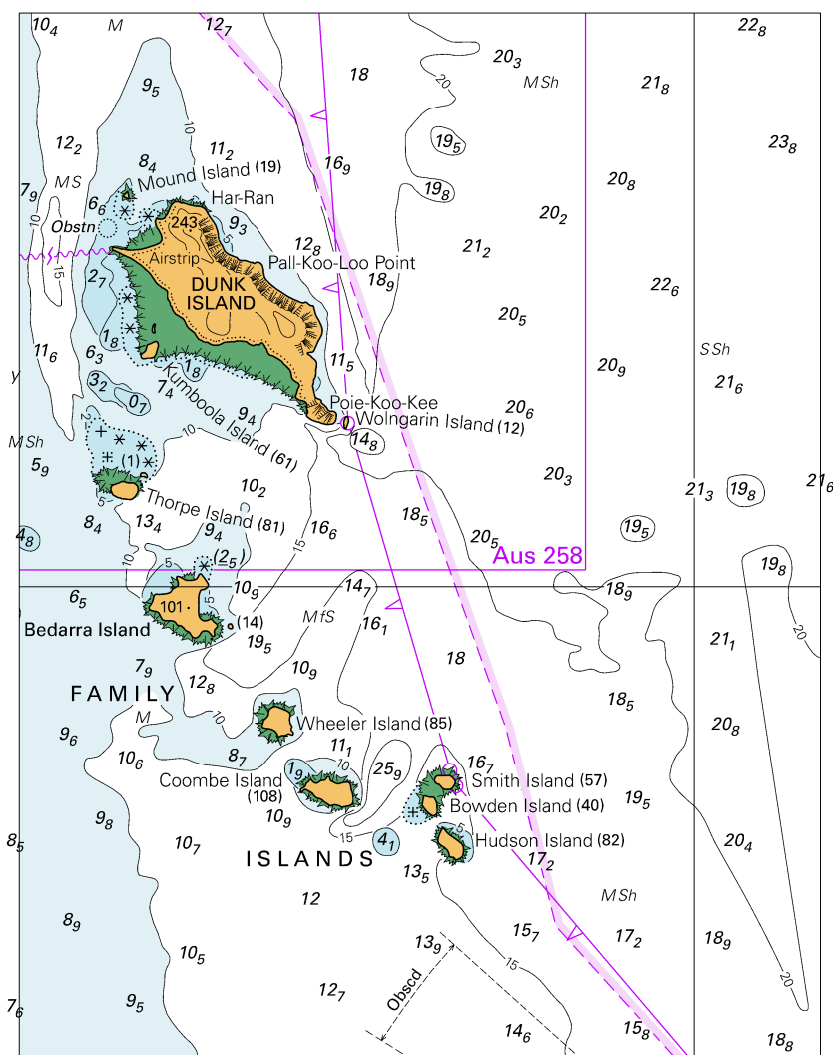
Zone of Confidence (ZOC) Diagram



© Commonwealth of Australia 2018

Block B for Chart Aus 258 (34.9 x 36.3mm)

To accompany Australian Notice to Mariners 478/2018

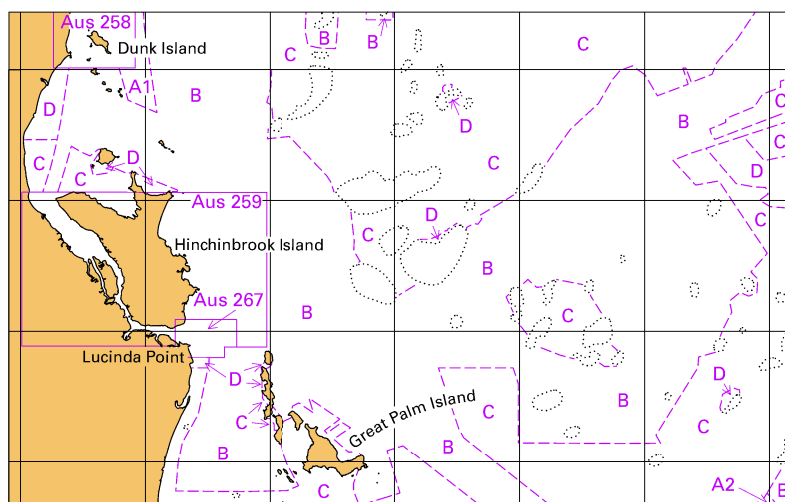


© Commonwealth of Australia 2018

Block A for Chart Aus 828

(105.9 x 138.0mm)

To accompany Australian Notice to Mariners 478/2018

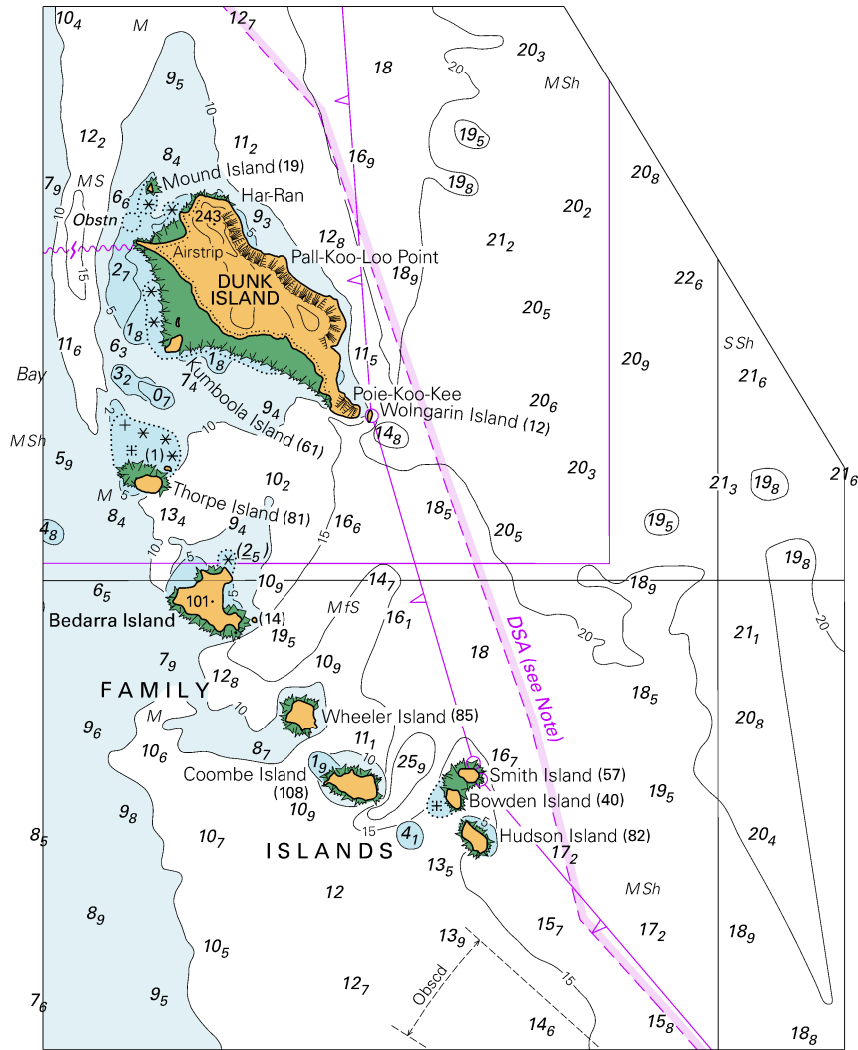


© Commonwealth of Australia 2018

Block B for Chart Aus 828

(103.4 x 65.5mm)

To accompany Australian Notice to Mariners 478/2018

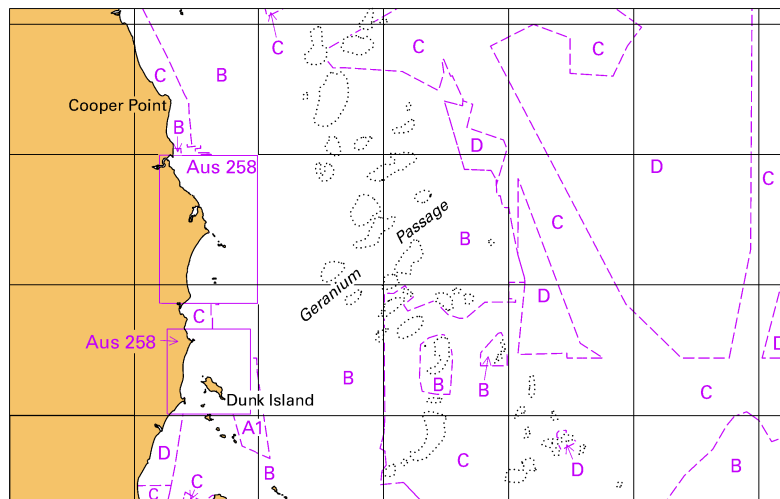


© Commonwealth of Australia 2018

Block A for Chart Aus 829

(68.9 x 138.0mm)
(106.0 x 138.0mm)

To accompany Australian Notice to Mariners 478/2018

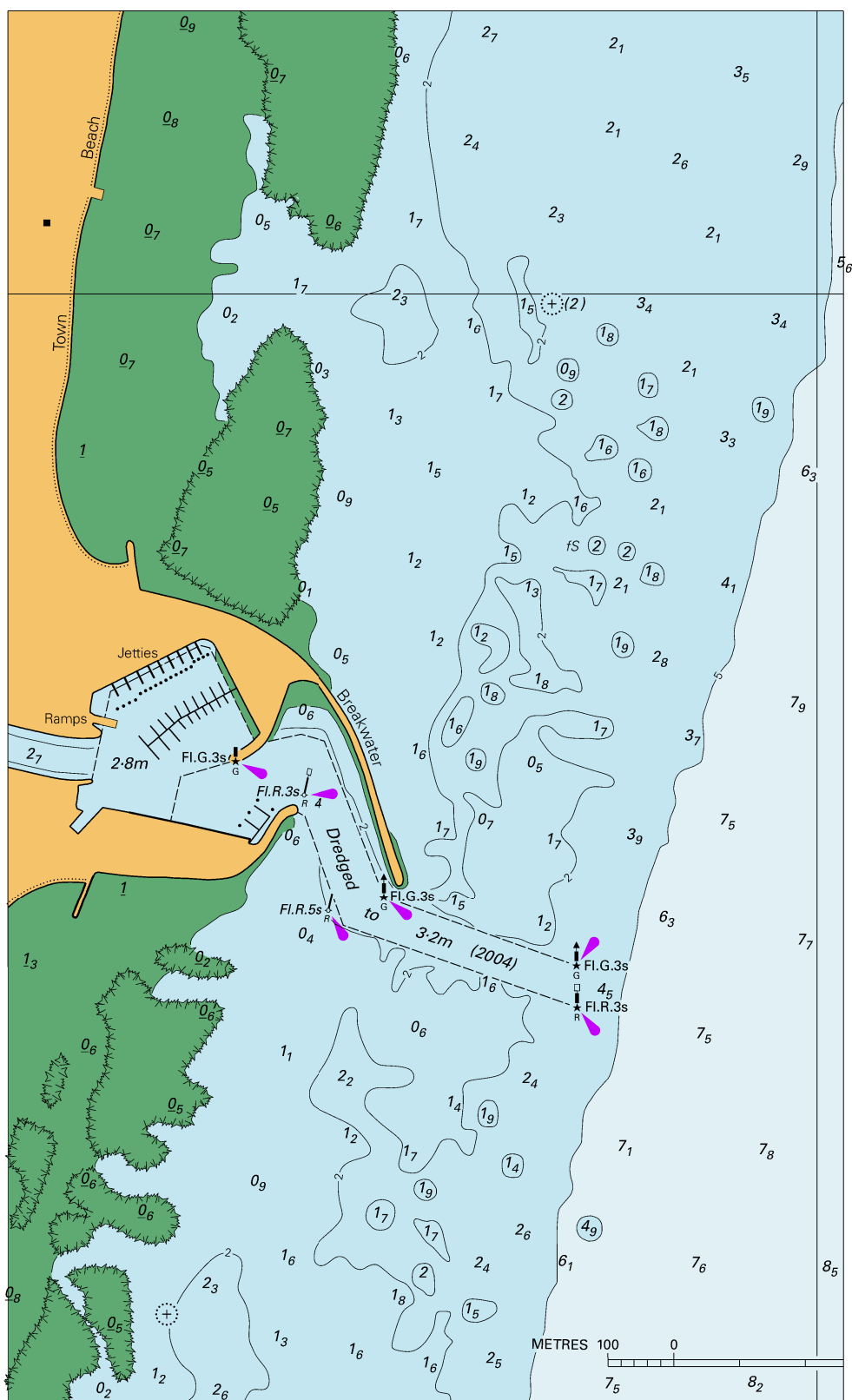


© Commonwealth of Australia 2018

Block B for Chart Aus 829

(103.2 x 65.2mm)

To accompany Australian Notice to Mariners 484/2018

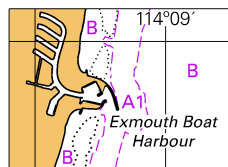


Block A for Chart Aus 72

© Commonwealth of Australia 2018

(128.0 x 211.8mm)

To accompany Australian Notice to Mariners 484/2018



© Commonwealth of Australia 2018
Block B for Chart Aus 72
(29.9 x 21.2mm)