



29 June 2018

Edition 13

AUSTRALIAN NOTICES TO MARINERS

Notices 506 - 544

Published fortnightly by the Australian Hydrographic Office



Australian Notices to Mariners are the authority for correcting charts and publications published by the Australian Hydrographic Office covering Australia, Papua New Guinea, Solomon Islands, Australian Antarctic Territory and Timor-Leste.

Commodore F.T. FREEMAN RAN
Hydrographer of Australia

SECTIONS.

- I. **Australian Notices to Mariners, including blocks and notes.**
- II. **Hydrographic Reports.**
- III. **Navigational Warnings.**

SUPPLEMENTS.

- I. **Tracings**
- II. **Cumulative List of Australian Notices to Mariners.**
- III. **Cumulative List of Temporary and Preliminary Australian Notices to Mariners.**
- IV. **Temporary and Preliminary Notices in force.**
- V. **Amendments to Admiralty List of Lights and Fog Signals (Vol K), Radio Signals (NP 281(2), 282, 283(2), 285, 286(4)) and Sailing Directions (NP 9, 13, 14, 15, 33, 34, 35, 36, 39, 44, 51, 60, 61, 62, 100, 136).**

© Commonwealth of Australia 2018

This work is copyright. Apart from any use permitted under the Copyright Act 1968, no part may be reproduced by any process, adapted, communicated or commercially exploited without prior written permission from The Commonwealth represented by the Australian Hydrographic Office.

IMPORTANT NOTICE

This edition of Notices to Mariners includes all significant information affecting AHO products which the AHO has become aware of since the last edition. All reasonable efforts have been made to ensure the accuracy and completeness of the information, including third party information, on which these updates are based. The AHO regards third parties from which it receives information as reliable, however the AHO cannot verify all such information and errors may therefore exist. The AHO does not accept liability for errors in third party information.

GENERAL INSTRUCTIONS

The substance of these notices should be inserted on the charts affected.

Bearings are referred to the true compass and are reckoned clockwise from North; those relating to lights are given as seen by an observer from seaward.

Positions quoted in notices relate to WGS84 which is the horizontal datum for all charts produced by the Australian Hydrographic Office.

The range quoted for a light is its nominal range.

Depths are with reference to the chart datum of each chart. Heights are above mean high water springs or mean higher high water, as appropriate.

The capital letter (P) or (T) after the number of any notice denotes a preliminary or temporary notice respectively, which are contained separately at the end of the permanent notices.

REPORTING OF DANGERS

Mariners are particularly requested to notify the AUSTRALIAN HYDROGRAPHIC OFFICE, Locked Bag 8801 Wollongong, NSW 2500 (Fax 02-4223 6599, e-mail datacentre@hydro.gov.au or, alternatively by filling in and submitting the [Hydrographic Notes](#) forms located on the web site – www.hydro.gov.au), immediately on the discovery of new dangers or suspected dangers to navigation. For changes or defects in aids to navigation notify AusSAR (Fax 02-6230 6868 or email rccaus@amsa.gov.au).

AUTHORISED USE

Copies of Australian notices are available free of charge from the Australian Hydrographic Office (AHO) website (www.hydro.gov.au) and through the eNotices (email) service (www.hydro.gov.au/enotices/enotices.htm).

Individual Notices may be copied for the purpose of inserting Notice substance on official charts and publications. Paper copies may be printed by chart agents and distributed to customers on a cost recovery basis. Participating chart agents are listed on the AHO website as providing a 'Paper Notices to Mariners' service (www.hydro.gov.au/webapps/jsp/agents/agents-list.jsp). Copies of the notices may not be sold for profit without prior written agreement.

NUMERICAL INDEX OF NOTICES TO MARINERS

Edition No 13

Notices	Aus Chart, INT Chart, ENC Cell, AHP, BA Pubs
506	Aus 44, 112, 135, 193, 400, 597, 604, 605, 608, 732, 754, 4708, 4723, 4725, INT 7746, 708, 723, 725
507	Amendment to Seafarers Handbook for Australian Waters - 4th Edition
508	Aus 191
509	Aus 203
510	Aus 192
511	Aus 237, 238
512	Aus 829
513	Aus 832
514	Aus 249, 250
515	Aus 236
516	Aus 249, 250
517	Aus 256
518	Aus 4604, 4621, INT 604, 621
519	Aus 4604, 4634, INT 604, 634
520	Aus 522, 523, 643
521	Aus 642
522	Aus 119
523	Aus 116, 755
524	Aus 55
525(T)	Aus 242
526(T)	Aus 249, 250
527(T)	Aus 250
528(T)	Aus 235
529(T)	Aus 236
530(T)	Aus 236
531(T)	Aus 236
532(T)	Aus 270
533(T)	Aus 505, 621
534(T)	Aus 319, 320, 4721, 4722, INT 721, 722
535(T)	Aus 744, 745
536(T)	Aus 328, 4723, INT 723
537(T)	Aus 112, 113, 114, 117, 754
538(T)	Aus 328, 329, 744
539(T)	Aus 754
540(T)	Aus 64, 328, 743, 744
541(T)	Aus 357
542(T)	Aus 181, 182
543(T)	Aus 150
544(T)	Aus 173, 795, 796

NUMERICAL INDEX OF CHARTS AFFECTED

Edition No 13

Aus Chart	Notices
Aus 44	506
Aus 55	524
Aus 64	540(T)
Aus 112	506, 537(T)
Aus 113	537(T)
Aus 114	537(T)
Aus 116	523
Aus 117	537(T)
Aus 119	522
Aus 135	506
Aus 150	543(T)
Aus 173	544(T)
Aus 181	542(T)
Aus 182	542(T)
Aus 191	508
Aus 192	510
Aus 193	506
Aus 203	509
Aus 235	528(T)
Aus 236	515, 529(T), 530(T), 531(T)
Aus 237	511
Aus 238	511
Aus 242	525(T)
Aus 249	514, 516, 526(T)
Aus 250	514, 516, 526(T), 527(T)
Aus 256	517
Aus 270	532(T)
Aus 319	534(T)
Aus 320	534(T)
Aus 328	536(T), 538(T), 540(T)
Aus 329	538(T)
Aus 357	541(T)
Aus 400	506
Aus 505	533(T)
Aus 522	520
Aus 523	520
Aus 597	506
Aus 604	506
Aus 605	506
Aus 608	506
Aus 621	533(T)
Aus 642	521
Aus 643	520
Aus 732	506
Aus 743	540(T)
Aus 744	535(T), 538(T), 540(T)
Aus 745	535(T)
Aus 754	506, 537(T), 539(T)
Aus 755	523
Aus 795	544(T)
Aus 796	544(T)
Aus 829	512
Aus 832	513
Aus 4604	518, 519

Aus Chart	Notices
Aus 4621	518
Aus 4634	519
Aus 4708	506
Aus 4721	534(T)
Aus 4722	534(T)
Aus 4723	506, 536(T)
Aus 4725	506

INT Chart	Notices
INT 7746	506
INT 604	518, 519
INT 621	518
INT 634	519
INT 708	506
INT 721	534(T)
INT 722	534(T)
INT 723	506, 536(T)
INT 725	506

506 AUSTRALIA - Products- New Charts and New Editions to be published shortly
Australian Hydrographic Service

New Charts to be published shortly

<i>Chart</i>	<i>Title</i>	<i>Scale</i>	<i>Expected Publication Date</i>	<i>Remarks</i>
--------------	--------------	--------------	----------------------------------	----------------

NIL

New Editions to be published shortly

<i>Chart</i>	<i>Title</i>	<i>Scale</i>	<i>Expected Publication Date</i>	<i>Remarks</i>
AUS 193	Approaches to Jervis Bay	1:37 500	13th July 2018	New Edition to incorporate new bathymetric data. New Edition to incorporate new bathymetric data.
AUS 135	Plans in South Australia (Sheet 4) Plans: Port Bonython Whyalla	1:12 500 1:10 000	13th July 2018	
AUS 732	Hall Point to Sunday Strait	1:150 000	13th July 2018	New Edition to incorporate new bathymetric data. New Edition to incorporate new submarine cables.
AUS 112	Approaches to Fremantle	1:37 500	13th July 2018	
AUS 754	Lancelin to Cape Peron	1:150 000	13th July 2018	New Edition to incorporate new submarine cables. New Edition to incorporate new submarine cables.
AUS 400	Approaches to Christmas Island	1:300 000	13th July 2018	
AUS 608	Christmas Island	1:100 000	13th July 2018	New Edition to incorporate new submarine cables. New Edition to incorporate new submarine cables.
AUS 4723	Java to North West Cape	1:1 500 000	13th July 2018	
AUS 4725	North West Cape to Cape Leeuwin	1:1 500 000	13th July 2018	New Edition to incorporate new submarine cables and wells. New Edition to incorporate new submarine cables and wells.
AUS 4708	Australia West Coast	1:3 500 000	13th July 2018	
AUS 44	Ashmore Reef	1:37 500	13th July 2018	New Edition to incorporate new marine reserves. New Edition to incorporate new marine reserves.
AUS 604	Macquarie Island and Approaches Inset:	1:100 000	13th July 2018	
AUS 597	Hasselborough and Buckles Bays Approaches to Heard Island	1:150 000 1:1 500 000	13th July 2018	New Edition to incorporate new marine reserves. New Edition to incorporate new marine reserves.
AUS 605	Heard and McDonald Islands Inset: Atlas Cove	1:150 000 1:450 000	13th July 2018	

507 AUSTRALIA - Product - Amendment to Seafarers Handbook for Australian Waters - 4th Edition
NSW Department of Environment and Heritage

Chapter 6 – Marine Environmental Protection - 6.2 pages 65, 66, 67, 68

Replace tables with accompanying block

508 AUSTRALIA - NEW SOUTH WALES - Kiama - Depths

Australian Hydrographic Office

Aus 191 (plan, Kiama) [1016/2016]

Insert	accompanying block	34° 40'.13 S	150° 51'.58 E
--------	--------------------	--------------	---------------

509 AUSTRALIA - NEW SOUTH WALES - Port Jackson - Mortlake Point - Wrecks

Australian Hydrographic Office

Aus 203 [385/2018]

Insert	depth, 4 ₉ m, enclosed by danger circle with legend <i>Wk</i>	33° 50'.088 S	151° 06'.467 E
	depth, 6 ₉ m, enclosed by danger circle with legend <i>Wk</i>	33° 50'.015 S	151° 06'.282 E
	depth, 4m, enclosed by contour with legend <i>Wk</i>	33° 49'.964 S	151° 06'.037 E
Delete	depth, 3 ₇ m	33° 50'.09 S	151° 06'.48 E

510 AUSTRALIA - NEW SOUTH WALES - Twofold Bay - Nav aids

Port Authority of New South Wales

Aus 192 [NE 18/5/2018]

Insert	yellow conical mooring buoy	37° 04'.359 S	149° 53'.995 E
	orange cylindrical mooring buoy	37° 04'.352 S	149° 54'.124 E
Delete	mooring buoy	37° 04'.35 S	149° 54'.11 E
	mooring buoy	37° 04'.38 S	149° 54'.16 E
	pipeline, between	37° 04'.15 S	149° 54'.14 E
		37° 04'.34 S	149° 54'.17 E

Aus 192 (plan, Eden) [NE 18/5/2018]

Insert	yellow conical mooring buoy	37° 04'.359 S	149° 53'.995 E
	orange cylindrical mooring buoy	37° 04'.355 S	149° 54'.069 E
	orange cylindrical mooring buoy	37° 04'.352 S	149° 54'.124 E
Delete	pipeline, between	37° 04'.15 S	149° 54'.14 E
		37° 04'.39 S	149° 54'.17 E
	mooring buoy	37° 04'.35 S	149° 54'.11 E
	mooring buoy	37° 04'.38 S	149° 54'.16 E

Aus 192 (plan, East Boyd Bay Wharves) [NE 18/5/2018]

Amend	lit mooring buoy to Q. Y. No3	37° 06'.12 S	149° 55'.41 E
	lit mooring buoy to Q. Y. No4	37° 06'.16 S	149° 55'.50 E
Delete	crane	37° 06'.05 S	149° 55'.56 E

511 AUSTRALIA - QUEENSLAND - Brisbane River - Light beacon

Maritime Safety Queensland

Aus 237 [236/2018]

Insert	starboard lateral light beacon, Q. G, without topmark	27° 25'.104 S	153° 08'.485 E
--------	---	---------------	----------------

Aus 238 [477/2018]

Insert	starboard lateral light beacon, Q. G, without topmark	27° 25'.104 S	153° 08'.485 E
--------	---	---------------	----------------

512 AUSTRALIA - QUEENSLAND - Dunk Island - DepthsHMAS *Mermaid* and HMAS *Paluma***Aus 829 [478/2018]**

Delete	depth, 19 ₈ m	17° 55'.1 S	146° 14'.5 E
	contour	17° 54'.7 S	146° 14'.0 E
		17° 55'.6 S	146° 14'.6 E

513 AUSTRALIA - QUEENSLAND - Hilder Reef - Nomenclature

Australian Reef Pilots Pty Ltd

Aus 832 [131/2017]

Insert	magenta legend, <i>Hilder Reef</i>	14° 20' S	145° 30' E
--------	------------------------------------	-----------	------------

514 AUSTRALIA - QUEENSLAND - Mackay - Dangerous Reef - Light buoy*Former Notice - 327(T)/2018 is cancelled*

Maritime Safety Queensland Notice 210/2018

Aus 249 [433/2018]

Replace	light buoy, with east cardinal pillar light buoy, Q(3)10s, without topmark	21° 08'.1 S	149° 14'.9 E
---------	--	-------------	--------------

Aus 250 (plan, Mackay Harbour) [313/2018]

Replace	light buoy, with east cardinal pillar light buoy, Q(3)10s, without topmark	21° 08'.06 S	149° 14'.94 E
---------	--	--------------	---------------

515 AUSTRALIA - QUEENSLAND - Moreton Bay - Manly Boat Harbour - Light buoy;Wreck

Maritime Safety Queensland

Aus 236 (plan, Manly Boat Harbour) [434/2018]

Insert	Special conical light buoy, <i>Fl. Y. 2.5s</i> , without topmark	27° 25'.905 S	153° 10'.723 E
	stranded wreck	27° 25'.883 S	153° 10'.724 E

Move	beacon	27° 26'.011 S	153° 10'.677 E
	to	27° 26'.034 S	153° 10'.681 E

Delete	depth, 0 ₆ m	27° 25'.90 S	153° 10'.72 E
--------	-------------------------	--------------	---------------

516 AUSTRALIA - QUEENSLAND - Slade Island - Light buoy*Former Notice - 75(T)/2018 is cancelled*

Maritime Safety Queensland Notice 209/2018

Aus 249 [514/2018]

Replace	light buoy, with east cardinal pillar light buoy, VQ(3)5s, without topmark	21° 06'.2 S	149° 15'.5 E
---------	--	-------------	--------------

Aus 250 (plan, Mackay Harbour) [514/2018]

Replace	light buoy, with east cardinal pillar light buoy, VQ(3)5s, without topmark	21° 06'.15 S	149° 15'.51 E
---------	--	--------------	---------------

517 AUSTRALIA - QUEENSLAND - Townsville - Cleveland Bay - Light buoys

Maritime Safety Queensland

Aus 256 [144/2018]

Insert	Special cylindrical light buoy, <i>Fl. Y. 2.5s</i> , without topmark	19° 09'.53 S	146° 51'.91 E
	special cylindrical light buoy, <i>Fl. Y. 2.5s</i> , without topmark	19° 07'.76 S	146° 52'.85 E

518 AUSTRALIA - CORAL SEA - Lihou Reef - Light buoy*Former Notice - 530(T)/2017 is cancelled*

Australian Bureau of Meteorology

Aus 4604 (INT 604) [50/2018]

Insert	special cylindrical light buoy, <i>Fl. Y. 2s</i> , without topmark	14° 49'.4 S	153° 29'.5 E
--------	--	-------------	--------------

Delete	light buoy	14° 42'.9 S	153° 32'.3 E
--------	------------	-------------	--------------

Aus 4621 (INT 621) [242/2018]

Insert	special cylindrical light buoy, <i>Fl. Y. 2s</i> , without topmark	14° 49'.4 S	153° 29'.5 E
--------	--	-------------	--------------

Delete	light buoy	14° 42'.9 S	153° 32'.3 E
--------	------------	-------------	--------------

519 AUSTRALIA - CORAL SEA - Mellish Reef - Light buoy

Former Notice - 118(T)/2018 is cancelled
Australian Bureau of Meteorology

Aus 4604 (INT 604) [518/2018]

Insert	special cylindrical light buoy, <i>Fl.2s</i> , without topmark	15° 51'.0 S	158° 27'.6 E
--------	--	-------------	--------------

Delete	light buoy	15° 39'.8 S	158° 27'.2 E
--------	------------	-------------	--------------

Aus 4634 (INT 634) [23/2018]

Insert	special cylindrical light buoy, <i>Fl.2s</i> , without topmark	15° 51'.0 S	158° 27'.6 E
--------	--	-------------	--------------

Delete	light buoy	15° 39'.8 S	158° 27'.2 E
--------	------------	-------------	--------------

520 PAPUA NEW GUINEA - Huon Gulf - Fish aggregating devices

National Maritime Safety Authority PNG

Aus 522 [36/2016]

Insert	special pillar buoy, with topmark	7° 12'.13 S	147° 20'.21 E
	special pillar buoy, with topmark	7° 16'.56 S	147° 15'.45 E

Aus 523 [451/2017]

Insert	special pillar buoy, with topmark	6° 48'.28 S	147° 26'.25 E
	special pillar buoy, with topmark	6° 57'.01 S	147° 27'.77 E
	special pillar buoy, with topmark	6° 56'.92 S	147° 23'.81 E
	special pillar buoy, with topmark	6° 56'.96 S	147° 19'.70 E
	special pillar buoy, with topmark	6° 58'.98 S	147° 12'.38 E
	special pillar buoy, with topmark	7° 01'.01 S	147° 16'.57 E
	special pillar buoy, with topmark	7° 03'.32 S	147° 09'.00 E
	special pillar buoy, with topmark	7° 05'.10 S	147° 17'.25 E
	special pillar buoy, with topmark	7° 08'.71 S	147° 18'.17 E
	special pillar buoy, with topmark	7° 10'.32 S	147° 12'.84 E
	special pillar buoy, with topmark	7° 12'.13 S	147° 20'.21 E
	special pillar buoy, with topmark	7° 16'.56 S	147° 15'.45 E

Aus 643 [481/2018]

Insert	special pillar buoy, with topmark	6° 58'.98 S	147° 12'.38 E
	special pillar buoy, with topmark	7° 03'.32 S	147° 09'.00 E

521 PAPUA NEW GUINEA - Port of Lae - Voco Point - Beacon

National Maritime Safety Authority PNG

Aus 642 [481/2018]

Insert	port lateral beacon, with topmark	6° 44'.285 S	147° 00'.486 E
--------	-----------------------------------	--------------	----------------

522 AUSTRALIA - WESTERN AUSTRALIA - Esperance - Light buoys

Crossview Enterprises

Aus 119 [200/2018]

Insert	Special spar light buoy, <i>Fl. Y.2s (Sept - Apr)</i> , without topmark	33° 52'.12 S	121° 54'.96 E
--------	---	--------------	---------------

Aus 119 (plan, Esperance) [200/2018]

Insert	Special spar light buoy, <i>Fl. Y.2s (Sept - Apr)</i> , without topmark	33° 52'.060 S	121° 54'.651 E
	Special spar light buoy, <i>Fl. Y.2s (Sept - Apr)</i> , without topmark	33° 52'.116 S	121° 54'.963 E

523 AUSTRALIA - WESTERN AUSTRALIA - Mandurah - Robert Point - Depths

Australian Hydrographic Office

Aus 116 (plan, Entrance to Mandurah Estuary) [443/2018]

Insert	drying, 0_7m , enclosed by contour	32° 31'.008 S	115° 42'.207 E
	depth, 5_8m	32° 30'.653 S	115° 42'.293 E

Delete	depth, 0_6m	32° 31'.03 S	115° 42'.21 E
	depth, 9_1m	32° 30'.65 S	115° 42'.29 E
	depth, 9_2m	32° 30'.72 S	115° 42'.26 E

Aus 755 [733/2017]

Delete	depth, 0_6m	32° 31'.0 S	115° 42'.2 E
--------	---------------	-------------	--------------

524 AUSTRALIA - WESTERN AUSTRALIA - Port Walcott - Bass Pass - Bearing

Australian Hydrographic Office

Aus 55 [859/2017]

Amend	bearing to 081°	20° 28'.1 S	117° 22'.6 E
-------	------------------------	-------------	--------------

525(T)/2018 AUSTRALIA - QUEENSLAND - Bundaberg - Burnett River - Exclusion zone

Former Notice - 792(T)/2017 is cancelled
Maritime Safety Queensland

Cancel this notice on receipt.

Chart formerly affected - Aus 242

526(T)/2018 AUSTRALIA - QUEENSLAND - Hay Point - Scientific instrument recovered

Former Notice - 326(T)/2018 is cancelled
Maritime Safety Queensland Notice 216(T)/2018

Cancel this notice on receipt.

Chart formerly affected - Aus 249 - Aus 250

527(T)/2018 AUSTRALIA - QUEENSLAND - Mackay - Scientific instrument recovered

Former Notice - 457(T)/2018 is cancelled
Maritime Safety Queensland Notice 215(T)/2018

Cancel this notice on receipt.

Chart formerly affected - Aus 250

528(T)/2018 AUSTRALIA - QUEENSLAND - Mooloolaba Harbour - Light buoy

Maritime Safety Queensland

A special spherical light buoy, *Fl.Y.2-5s*, exists in position 26° 41'.20 S 153° 07'.57 E.

Chart temporarily affected - Aus 235

529(T)/2018 AUSTRALIA - QUEENSLAND - Moreton Bay - Manly Boat Harbour - Dredging operations

Former Notice - 74(T)/2018 is cancelled
Maritime Safety Queensland Notice 219(T)/2018

The barges *IBIS II* and *DB1* are conducting dredging operations in Manly Boat Harbour (27° 27'.56 S 153° 11'.38 E).

The barges will display appropriate lights and shapes and will monitor VHF Ch 12,13 and 16.

Mariners are advised to navigate with caution in the area.

Chart temporarily affected - Aus 236

530(T)/2018 AUSTRALIA - QUEENSLAND - Moreton Bay - Mud Island - Scientific instrument

Former Notice - 1207(T)/2016 is cancelled
Maritime Safety Queensland

A scientific instrument marked by a special cylindrical light buoy, *Q.Y* exists in position 27° 20'.62 S 153° 13'.23 E.

Chart temporarily affected - Aus 236

531(T)/2018 AUSTRALIA - QUEENSLAND - Moreton Bay - Russell Island - Light Buoy;Wreck

Maritime Safety Queensland Notice 231(T)/2018

A wreck marked by a special cylindrical light buoy, *Fl.Y.2-5s*, exists in position 27° 38'.65 S 153° 22'.62 E.

Chart temporarily affected - Aus 236

532(T)/2018 AUSTRALIA - QUEENSLAND - Port Douglas - Light buoy
Maritime Safety Queensland Notice 223(T)/2018

A special spherical light buoy, *Fl. Y. 2-5s*, exists in position 16° 28'.61 S 145° 27'.68 E.

Chart temporarily affected - Aus 270

533(T)/2018 PAPUA NEW GUINEA - Lark Patch - AIS inoperative
National Maritime Safety Authority PNG

The AIS at 9° 31'.56 S 147° 08'.53 E is inoperative.

Chart temporarily affected - Aus 505 - Aus 621

534(T)/2018 AUSTRALIA - WESTERN AUSTRALIA - Browse Island - Drill rig northwestwards
Former Notice - 334(T)/2018 is cancelled
MODU *ENSCO 5006*

Drill rig *ENSCO 5006* is conducting drilling operations in position 13° 51'.70 S 123° 16'.389 E.

Chart temporarily affected - Aus 319 - Aus 320 - Aus 4721 (INT 721) - Aus 4722 (INT 722)

535(T)/2018 AUSTRALIA - WESTERN AUSTRALIA - Exmouth Gulf - Scientific instruments recovered
Former Notice - 423(T)/2018 is cancelled
Department of Transport WA

Cancel this notice on receipt.

Chart formerly affected - Aus 744 - Aus 745

536(T)/2018 AUSTRALIA - WESTERN AUSTRALIA - Exmouth Plateau - Drill rig
Former Notice - 299(T)/2018 is cancelled
Australian Maritime Safety Authority

Cancel this notice on receipt.

Chart formerly affected - Aus 328 - Aus 4723 (INT 723)

537(T)/2018 AUSTRALIA - WESTERN AUSTRALIA - Fremantle - Dredging operations
Fremantle Ports Notice 2/2018

The dredger *Modi-R* will be undertaking dredging operations in area bounded by the following positions:

32° 08'.33 S 115° 42'.20 E
32° 08'.27 S 115° 42'.40 E
32° 03'.60 S 115° 41'.34 E
32° 03'.63 S 115° 41'.13 E.

Mariners are advised to navigate with caution in the area.

Chart temporarily affected - Aus 112 - Aus 113 - Aus 114 - Aus 117 - Aus 754

538(T)/2018 AUSTRALIA - WESTERN AUSTRALIA - Muiron Islands - Subsea operations northwestwards
Technip

MV *Deep Orient* and support vessels will be conducting subsea operations in the vicinity of position 21° 25'.75 S 114° 05'.07 E.

Chart temporarily affected - Aus 328 - Aus 329 - Aus 744

539(T)/2018 AUSTRALIA - WESTERN AUSTRALIA - Rottnest Island - Subsea operations
Blue Ocean Monitoring

Two Teledyne Slocum underwater gliders will be operating in a an area bounded by the following positions:

32°06'.00 S 115°20'.00 E
32°06'.00 S 115°10'.00 E
32°14'.00 S 115°07'.00 E
32°14'.00 S 115°17'.00 E.

Mariners are advised to navigate with caution.

Chart temporarily affected - Aus 754

540(T)/2018 AUSTRALIA - WESTERN AUSTRALIA - Thevenard Island - Lights altered

Former Notice - 470(T)/2018 is cancelled
Department of Transport WA Notice 87/2018

Lights have been temporarily altered as follows:

<i>Position</i>	<i>Characteristics</i>
21° 31'.33 S 114° 58'.16 E	<i>Mo(U)15s</i>
21° 29'.36 S 114° 59'.39 E	<i>Mo(U)15s</i>

Chart temporarily affected - Aus 64 - Aus 328 - Aus 743 - Aus 744

541(T)/2018 AUSTRALIA - VICTORIA - Ninety Mile Beach - Geotechnical survey complete

Former Notice - 503(T)/2018 is cancelled
Esso Australia Pty Ltd

Cancel this notice on receipt.

Chart formerly affected - Aus 357

542(T)/2018 AUSTRALIA - VICTORIA - Port Welshpool - Harbour works

Former Notice - 1001(T)/2017 is cancelled
Gippsland Ports Notices 248(T)/2017,199(T)/2018

Works associated with the remediation of the Welshpool Pier (38° 42'.25 S 146° 27'.11 E) are in progress.

A floating boom has been established around the pier, marked at the pier end by six special light buoys, *Fl.Y.3s*.

Two barges, marked by lights, *Fl.Y.3s*, and two work boats are on site.

The light, *Oc.R.10s 10m 3M* (38° 42'.34 S 146° 26'.99 E) is temporarily withdrawn.

Mariners are advised to navigate with caution in the area.

Chart temporarily affected - Aus 181 - Aus 182

543(T)/2018 AUSTRALIA - VICTORIA - Western Port - San Remo - Harbour works

Parks Victoria Notice 200(T)/2018

Harbour works at San Remo Jetty (38° 31'.20 S 145° 21'.87 E) are in progress.

The removal works will involve divers and machinery.

Mariners are advised to navigate with caution in the area and observe signage and directions from works vessels.

Chart temporarily affected - Aus 150

544(T)/2018 AUSTRALIA - TASMANIA - Storm Bay - Scientific instrument
Marine and Safety Tasmania Notice M103/2018

A special light buoy, *Fl.Y.1.5s*, exists in position 43° 13'.82 S 147° 27'.64 E.

Chart temporarily affected - Aus 173 - Aus 795 - Aus 796

II

HYDROGRAPHIC REPORTS

NIL

III

NAVIGATION WARNINGS

The Australian Hydrographic Office will no longer compile Section III of the Australian Notices to Mariners. For the most up to date navigation warnings please refer to:

AMSA Navigation Warnings

<http://amsa.gov.au/search-and-rescue/distress-and-safety-comms/msi/msi-email/index.asp>

New Zealand Notices to Mariners (Navarea XIV warnings)

<http://www.linz.govt.nz/sea/maritime-safety/notices-mariners>

CHAPTER 6 Marine Environmental Protection

6.1 Marine Protected Areas

1. The Australian Government identifies, declares and manages marine parks in Commonwealth waters. Commonwealth waters are those waters that start where State and Territory jurisdiction ends and extend out to the boundary of Australia's Exclusive Economic Zone (EEZ), typically 200 nautical miles from the low water line. State and Territory waters generally cover waters from the low water line out to three nautical miles.

6.1.1 Particularly Sensitive Sea Areas

1. The International Maritime Organization (IMO) declared the Great Barrier Reef region a Particularly Sensitive Sea Area (PSSA) in 1990. This was extended to the Torres Strait in 2005 and to the South West Coral Sea in 2015. The PSSA designation recognises that these areas are vulnerable to damage by international shipping activities. Special protection measures including Australia's system of pilotage, ship routing measures and ship reporting requirements apply to shipping activities in areas of the PSSA. For further information regarding the Great Barrier Reef Marine Park see 6.3.

6.1.2 Environmentally Sensitive Sea Areas

1. These seas have specific environmental protective measures that apply for domestic commercial activities including tourism, fishing, mining, as well as scientific and recreational purposes. To undertake these activities in an ESSA, an authorisation must be obtained from the Director of National Parks. ESSA are marked upon electronic and paper nautical charts, however there are no restrictions upon international shipping activities or commercial vessel when transit undertaking voyages in conformance with MARPOL and SOLAS. Vessels should note the environmental significance of ESSA and take extra care while transiting through these areas. For further information regarding the Great Barrier Reef Marine Park see 6.3.

6.1.3 Depiction of marine protected areas on Australian nautical charts

1. Where appropriate and practical, marine protected areas are charted as ESSA or Antarctic Specially Protected Areas (ASPA). Australian charts include the outer limits of the area, the outer limits of navigation restrictions, and chart notes. Mariners are advised to seek guidance on the specific restrictions within these areas from the responsible agency.







NP 5011 Reference	Description	Encoded in an ENC as:	Display on ECDIS (traditional symbology)	Display on paper chart
N 22	Particularly Sensitive Sea Area (declared by IMO)	Administration Area		
N 1.2	Designated Shipping Area (defined area for normal transit through the GBR)	Administration Area		Note: Ships should navigate on the shaded side of the line 
M 28.2	Two Way Route	Two-Way Route Part		

Table continues next page

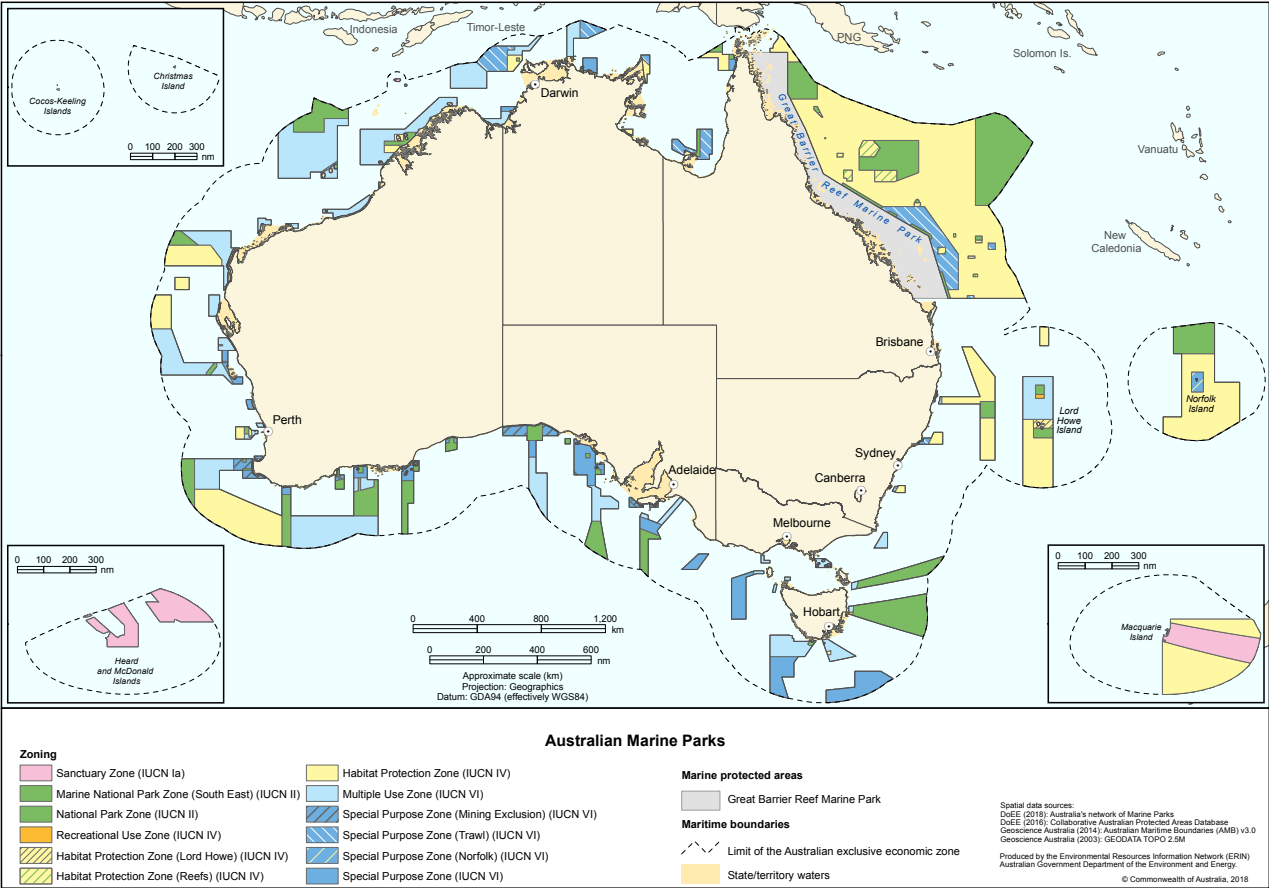
N 22	Environmentally Sensitive Sea Area (Great Barrier Reef Marine Park)	Administration Area		GBRMP (see Note)
N 22	Environmentally Sensitive Sea Area (Other areas)	Restricted Area		ESSA (see Note)
N 22	Marine Reserve (an area where one or more additional levels of restrictions upon activities exists within an ESSA)	Restricted Area		Note: Not shown on paper charts

For examples of depiction of the various overlapping zones affecting shipping in the Great Barrier Reef, see 6.3.

6.2 Marine Parks in Commonwealth waters

1. This section provides information related to the 58 Australian Marine Parks (AMPs) and Heard and McDonald Islands Marine Reserve. For information regarding the Great Barrier Reef Marine Park see 6.3.
2. An authorisation is not generally required for transiting in marine parks in Commonwealth waters, but there may be restrictions on transiting in some sensitive areas. An authorisation, however, may be required for some commercial operations in AMPs and Heard and McDonald Islands Marine Reserve. For instance, disembarking passengers in AMPs is deemed to be a commercial operation and would require approval. Mariners are advised that anchoring and discharge of waste is restricted in marine parks in Commonwealth waters. For details about the rules applying to AMPs, mariners need to contact Parks Australia in the Department of the Environment and Energy or visit Parks Australia’s website at the address listed below.

Website: parksaustralia.gov.au/marine/



- Information on all AMPs can be found on Parks Australia's website, including current Determinations and Approvals issued by the Director of National Parks. Users active in AMPs will need to keep up to date on management arrangements for AMPs.
- Generally vessel transit is allowed in AMPs without a permit. In cases where transit is not allowed this is encoded in the Electronic Navigational Charts (ENC).

6.2.1 Organisations responsible for Marine Parks in Commonwealth waters

1. Commonwealth Government organisations responsible for declaring and managing marine parks in Commonwealth waters in their jurisdictions are listed below.

COMMONWEALTH Parks Australia	Telephone: +61 419 293 465 Website: parksaustralia.gov.au/marine/
Great Barrier Reef Marine Park Authority	Telephone: + 61 7 4750 0700 Email: info@gbmpa.gov.au Website: www.gbmpa.gov.au
Australian Antarctic Division	Telephone: +61 3 6232 3209 Website: www.antarctica.gov.au

6.2.2 Environment Protection and Biodiversity Conservation Act permits

1. There are numerous activities, for which permits are required under the *Environment Protection and Biodiversity Conservation Act 1999* (Cth) (EPBC Act), including:
 - activities on Commonwealth land or in the Commonwealth Marine Area (see Ch.5) that may affect a member of a listed or threatened species or ecological community, a listed migratory species, or a listed marine species. It is an offense to kill, injure, take, trade, keep or move a member of a listed species without a permit. However the results of an unavoidable accident is not an offense provided the person responsible reports the accident to the Department of the Environment within seven days.
 - whale watching (this includes whales, dolphins and porpoises)
 - other activities which may affect whales, dolphins or porpoises inside or outside the Australian Whale Sanctuary. It is an offense to kill, injure, take, trade, keep, move or interfere with whales, dolphins or porpoises without a permit
 - activities involving the movement of wildlife or product made from wildlife, into or out of Australia

Website:	www.environment.gov.au (Permits and Assessments Tab)
----------	--

6.2.3 Marine components of Commonwealth National Parks

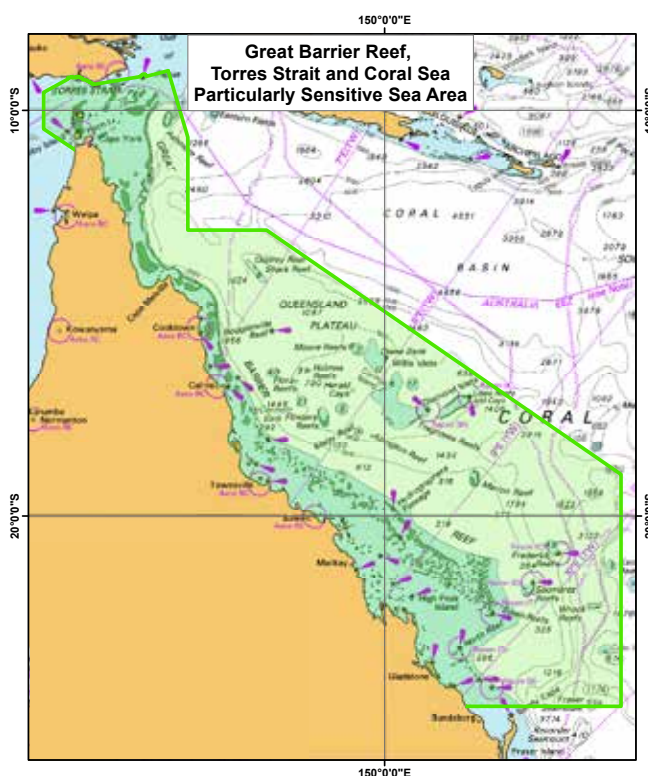
1. The Director of National Parks (through Parks Australia) is responsible for the management of the following terrestrial Commonwealth national parks established under the EPBC Act, which include a marine component:
 - Booderee National Park
 - Christmas Island National Park
 - Norfolk Island National Park
 - Pulu Keeling National Park

- Information is available on the website below about the marine components of these parks, including activities that are permitted/prohibited within the areas, protected area management, permit requirements, and processes for controlled activities.

Website:	www.environment.gov.au/topic/national-parks
----------	--

6.3 The Great Barrier Reef and Torres Strait

- The Great Barrier Reef (GBR) is the largest coral reef ecosystem and the world's largest living structure. It stretches 2300 kilometres from Lady Elliot Island in the south to the tip of Cape York Peninsula in the north, spanning 14 degrees of latitude. Contrary to its name, the Great Barrier Reef is not one long continuous reef, but a complex of some 2900 reefs, 900 islands, lagoons, seagrass meadows and mangrove forests. It hosts approximately 1500 species of fish, 360 species of hard corals, over one third of the world's soft coral species, 5000 mollusc species, six of the world's seven marine turtle species, and more than 30 species of marine mammals.
- Many activities take place within the reef including commercial and recreational fishing, scientific research, tourism, commercial shipping, recreational boating and traditional use.
- Due to its international importance, the GBR is both a Marine Park and World Heritage Area. Under the World Heritage Convention, Australia has an international obligation to protect and conserve the Great Barrier Reef World Heritage Area for future generations. Included in the World Heritage Area (348 000 square kilometres) are all islands, regardless of tenure, and Queensland internal waters. Over much of the Great Barrier Reef and Torres Strait area discharges are prohibited under the International Convention for the Prevention of Pollution from Ships (MARPOL) see 6.7.
- The GBRMP is a Commonwealth Marine Park, covering 98.96 percent of the Great Barrier Reef World Heritage Area.
- The GBRMP was established under the *Great Barrier Reef Marine Park Act 1975 (Cth)* (GBRMP Act). The GBRMP Act confers responsibility for the management of the GBRMP upon the Great Barrier Reef Marine Park Authority (GBRMPA), an Australian Government statutory agency.
- A combination of legislative and educational mechanisms are used to manage the Marine Park. These include:
 - Legislative provisions under the GBRMP Act and Regulations - including compulsory pilotage requirements for certain ships within prescribed areas, restrictions on certain activities (e.g. waste discharge, illegal fishing, negligent shipping) and offences and penalties for causing environmental damage to the GBRMP.
 - The *Great Barrier Reef Marine Park Zoning Plan, 2003* (Zoning Plan) defines certain activities which are allowed 'as of right' and where activities are allowed with a permit. Under the Zoning Plan, ships may only navigate within the Designated Shipping Area (DSA) and the General Use Zone (GUZ). The DSA has been put in place to help minimise impacts from shipping, while having regard for the shipping industry and Australia's international obligations.



Block for Chart Aus 191

(91.1 x 88.2mm)