



AUSTRALIAN NOTICES TO MARINERS

Notices 545 - 599

**Including
List of Temporary and Preliminary Notices in force**

Published fortnightly by the Australian Hydrographic Office



Australian Notices to Mariners are the authority for correcting charts and publications published by the Australian Hydrographic Office covering Australia, Papua New Guinea, Solomon Islands, Australian Antarctic Territory and Timor-Leste.

Commodore F.T. FREEMAN RAN
Hydrographer of Australia

SECTIONS.

- I. Australian Notices to Mariners, including blocks and notes.
- II. Hydrographic Reports.
- III. Navigational Warnings.

SUPPLEMENTS.

- I. Tracings
- II. Cumulative List of Australian Notices to Mariners.
- III. Cumulative List of Temporary and Preliminary Australian Notices to Mariners.
- IV. Temporary and Preliminary Notices in force.
- V. Amendments to Admiralty List of Lights and Fog Signals (Vol K), Radio Signals (NP 281(2), 282, 283(2), 285, 286(4)) and Sailing Directions (NP 9, 13, 14, 15, 33, 34, 35, 36, 39, 44, 51, 60, 61, 62, 100, 136).

IMPORTANT NOTICE

This edition of Notices to Mariners includes all significant information affecting Australian Hydrographic Office (AHO) products which the AHO has become aware of since the last edition. All reasonable efforts have been made to ensure the accuracy and completeness of the information, including third party information, on which these updates are based. The AHO regards third parties from which it receives information as reliable, however the AHO cannot verify all such information and errors may therefore exist. The AHO does not accept liability for errors in third party information.

GENERAL INSTRUCTIONS

The substance of these notices should be inserted on the charts affected.

Bearings are referred to the true compass and are reckoned clockwise from North; those relating to lights are given as seen by an observer from seaward.

Positions quoted in notices relate to WGS84 which is the horizontal datum for all charts produced by the Australian Hydrographic Office.

The range quoted for a light is its nominal range.

Depths are with reference to the chart datum of each chart. Heights are above mean high water springs or mean higher high water, as appropriate.

The capital letter (P) or (T) after the number of any notice denotes a preliminary or temporary notice respectively, which are contained separately at the end of the permanent notices.

REPORTING OF DANGERS

Mariners are particularly requested to notify the AUSTRALIAN HYDROGRAPHIC OFFICE, Locked Bag 8801 Wollongong, NSW 2500 (Fax 02-4223 6599, e-mail datacentre@hydro.gov.au or, alternatively by filling in and submitting the [Hydrographic Notes](#) forms located on the web site – www.hydro.gov.au), immediately on the discovery of new dangers or suspected dangers to navigation. For changes or defects in aids to navigation notify AusSAR (Fax 02-6230 6868 or email rccaus@amsa.gov.au).

AUTHORISED USE

Copies of Australian notices are available free of charge from the AHO website (www.hydro.gov.au) and through the eNotices (email) service (www.hydro.gov.au/enotices/enotices.htm).

Individual Notices may be copied for the purpose of inserting Notice substance on official charts and publications. Paper copies may be printed by chart agents and distributed to customers on a cost recovery basis. Participating chart agents are listed on the AHO website as providing a 'Paper Notices to Mariners' service (www.hydro.gov.au/webapps/jsp/agents/agents-list.jsp). Copies of the notices may not be sold for profit without prior written agreement.

NUMERICAL INDEX OF NOTICES TO MARINERS

Edition No 14

Notices	Aus Chart, INT Chart, ENC Cell, AHP, BA Pubs
545	Aus 44, 112, 135, 193, 400, 597, 604, 605, 608, 732, 754, 4708, 4723, 4725, INT 7746, 708, 723, 725
546	Aus 17
547	Erratum
548	HF Coast Radio Cairns and Coast Radio Gladstone broadcast changes
549	Amendment to Seafarers Handbook for Australian Waters - 4th Edition
550	Aus 4074, INT 74
551	Aus 207, 208
552	Aus 255
553	Aus 236, 256, 814
554	Aus 249, 251, 823, 824
555	Aus 230
556	Aus 257
557	Aus 257
558	Aus 520, 521, 4620, 4621, INT 620, 621
559	Aus 314
560	Aus 759
561	Aus 331, 4725, INT 725
562	Aus 84
563	Aus 43, 311, 322, 327, 328, 329, 741, 742
564	Aus 52, 53
565	Aus 115
566	Aus 4727, INT 727
567	Aus 4728, INT 728
568	Aus 129
569	Aus 181, 182, 357
570	Aus 153, 157
571	Aus 150
572	Aus 150, 151, 152
573(T)	Aus 806
574(T)	Aus 193
575(T)	Aus 489, 809, 810, 4643, INT 643
576(T)	Aus 262, 263, 830
577(T)	Aus 831
578(T)	Aus 817
579(T)	Aus 249, 250, 823, 824
580(T)	Aus 249, 251, 823, 824
581(T)	Aus 248, 367, 820
582(T)	Aus 252, 253
583(T)	Aus 309, 310, 311, 315, 4721, INT 721
584(T)	Aus 316, 318, 725, 726, 4603, 4721, INT 603, 721
585(T)	Aus 331, 746, 4725, INT 725
586(T)	Aus 52, 53
587(T)	Aus 327
588(T)	Aus 327, 4723, INT 723
589(T)	Aus 327
590(T)	Aus 754
591(T)	Aus 754
592(T)	Aus 112
593(T)	Aus 143
594(T)	Aus 143, 158
595(T)	Aus 151
596(T)	Aus 173, 795
597(T)	Aus 173, 795, 796
598(T)	Aus 173
599(T)	TEMPORARY AND PRELIMINARY NOTICES

NUMERICAL INDEX OF CHARTS AFFECTED

Edition No 14

Aus Chart	Notices
Aus 17	546
Aus 43	563
Aus 44	545
Aus 52	564, 586(T)
Aus 53	564, 586(T)
Aus 84	562
Aus 112	545, 592(T)
Aus 115	565
Aus 129	568
Aus 135	545
Aus 143	593(T), 594(T)
Aus 150	571, 572
Aus 151	572, 595(T)
Aus 152	572
Aus 153	570
Aus 157	570
Aus 158	594(T)
Aus 173	596(T), 597(T), 598(T)
Aus 181	569
Aus 182	569
Aus 193	545, 574(T)
Aus 207	551
Aus 208	551
Aus 230	555
Aus 236	553
Aus 248	581(T)
Aus 249	554, 579(T), 580(T)
Aus 250	579(T)
Aus 251	554, 580(T)
Aus 252	582(T)
Aus 253	582(T)
Aus 255	552
Aus 256	553
Aus 257	556, 557
Aus 262	576(T)
Aus 263	576(T)
Aus 309	583(T)
Aus 310	583(T)
Aus 311	563, 583(T)
Aus 314	559
Aus 315	583(T)
Aus 316	584(T)
Aus 318	584(T)
Aus 322	563
Aus 327	563, 587(T), 588(T), 589(T)
Aus 328	563
Aus 329	563
Aus 331	561, 585(T)
Aus 357	569
Aus 367	581(T)
Aus 400	545
Aus 489	575(T)
Aus 520	558
Aus 521	558

Aus Chart	Notices
Aus 597	545
Aus 604	545
Aus 605	545
Aus 608	545
Aus 725	584(T)
Aus 726	584(T)
Aus 732	545
Aus 741	563
Aus 742	563
Aus 746	585(T)
Aus 754	545, 590(T), 591(T)
Aus 759	560
Aus 795	596(T), 597(T)
Aus 796	597(T)
Aus 806	573(T)
Aus 809	575(T)
Aus 810	575(T)
Aus 814	553
Aus 817	578(T)
Aus 820	581(T)
Aus 823	554, 579(T), 580(T)
Aus 824	554, 579(T), 580(T)
Aus 830	576(T)
Aus 831	577(T)
Aus 4074	550
Aus 4603	584(T)
Aus 4620	558
Aus 4621	558
Aus 4643	575(T)
Aus 4708	545
Aus 4721	583(T), 584(T)
Aus 4723	545, 588(T)
Aus 4725	545, 561, 585(T)
Aus 4727	566
Aus 4728	567

INT Chart	Notices
INT 7746	545
INT 74	550
INT 603	584(T)
INT 620	558
INT 621	558
INT 643	575(T)
INT 708	545
INT 721	583(T), 584(T)
INT 723	545, 588(T)
INT 725	545, 561, 585(T)
INT 727	566
INT 728	567

545 AUSTRALIA - Products - New Charts, New Editions, Withdrawn Charts

Australian Hydrographic Office

New Charts

Chart	Title and Geographical limits	Scale	Publication Date	Remarks
NIL				

New Electronic Navigation Chart (Aus ENC)

Cell Name	Title	Publication Date	Remarks
NIL			

New Editions and Withdrawn Charts

Chart	Title	Scale	Publication Date	Remarks
AUS 193 Edition 2	Australia - East Coast - New South Wales - Approaches to Jervis Bay Plans: Huskisson HMAS Creswell	1:37 500 1:15 000 1:5 000	13th July 2018	New Edition to incorporate latest bathymetric data. Produced with blue contours. Chart Aus 193 Edition 1 dated 28 May 2004 is now superseded and must be withdrawn from use.
AUS 135 Edition 2	Australia - South Coast - Plans in South Australia (Sheet 4) Plans: Port Bonython Whyalla	 1:12 500 1:10 000	13th July 2018	New Edition to incorporate latest bathymetric data. Chart Aus 135 Edition 1 dated 16 December 2011 is now superseded and must be withdrawn from use.
AUS 732 Edition 4	Australia - North West Coast - Western Australia - Hall Point to Sunday Strait	1:150 000	13th July 2018	New Edition to incorporate latest bathymetric data. Chart Aus 732 Edition 3 dated 9 September 2016 is now superseded and must be withdrawn from use.
AUS 112 Edition 5	Australia - West Coast - Western Australia - Approaches to Fremantle	1:37 500	13th July 2018	New Edition to incorporate submarine cables. Chart Aus 112 Edition 4 dated 26 July 2002 is now superseded and must be withdrawn from use.
AUS 754 Edition 5	Australia - West Coast - Western Australia - Lancelin to Cape Peron	1:150 000	13th July 2018	New Edition to incorporate submarine cables. Chart Aus 754 Edition 4 dated 10 October 2014 is now superseded and must be withdrawn from use.
AUS 400 Edition 2	Indian Ocean - Approaches to Christmas Island	1:300 000	13th July 2018	New Edition to incorporate submarine cables. Chart Aus 400 Edition 1 dated 22 August 2003 is now superseded and must be withdrawn from use.
AUS 608 Edition 3	Indian Ocean - Christmas Island	1:100 000	13th July 2018	New Edition to incorporate submarine cables. Chart Aus 608 Edition 2 dated 6 July 2007 is now superseded and must be withdrawn from use.
AUS 4723 Edition 3	Australia - North West Coast - Java to North West Cape	1:1 500 000	13th July 2018	New Edition to incorporate submarine cables. Chart Aus 4723 Edition 2 dated 21 September 2012 is now superseded and must be withdrawn from use.
AUS 4725 Edition 2	Australia - West Coast - North West Cape to Cape Leeuwin	1:1 500 000	13th July 2018	New Edition to incorporate submarine cables and wells.

13 July 2018

545 AUSTRALIA - Products - New Charts, New Editions, Withdrawn Charts

AUS 4708 Edition 8	Indian Ocean - Australia West Coast	1:3 500 000	13th July 2018	Chart Aus 4725 Edition 1 dated 27 August 2010 is now superseded and must be withdrawn from use.
				New Edition to incorporate submarine cables and wells. Chart Aus 4708 Edition 7 dated 6 June 2008 is now superseded and must be withdrawn from use.
AUS 44 Edition 4	Timor Sea - Ashmore Reef	1:37 500	13th July 2018	New Edition to incorporate marine reserves. Chart Aus 44 Edition 3 dated 3 June 2016 is now superseded and must be withdrawn from use.
AUS 604 Edition 2	Southern Ocean - Macquarie Island and Approaches	1:100 000	13th July 2018	New Edition to incorporate marine reserves. Chart Aus 604 Edition 1 dated 1 September 2006 is now superseded and must be withdrawn from use.
	Plan: Hasselborough and Buckles Bays	1:150 000		
AUS 597 Edition 3	Australia - Southern Ocean - Approaches to Heard Island	1:1 500 000	13th July 2018	New Edition to incorporate marine reserves. Chart Aus 597 Edition 2 dated 13 February 2015 is now superseded and must be withdrawn from use.
AUS 605 Edition 3	Australia - Southern Ocean - Heard and McDonald Islands	1:150 000	13th July 2018	New Edition to incorporate marine reserves. Chart Aus 605 Edition 2 dated 18 July 2014 is now superseded and must be withdrawn from use.
	Inset: Atlas Cove	1:450 000		

Admiralty publication

<i>NP No</i>	<i>Title</i>	<i>Date</i>	<i>Remarks</i>
NP285	Admiralty List of Radio Signals. Global Maritime Distress and Safety System (GMDSS) 2018/19.	19/7/2018	The 2017/18 Edition of NP285 is cancelled.

Erratum

Edition 13 didn't include the latest published charts. The following charts were published in Edition 13

New Editions and Withdrawn Charts

<i>Chart</i>	<i>Title</i>	<i>Scale</i>	<i>Publication Date</i>	<i>Remarks</i>
AUS 4 Edition 7	Australia - North Coast - Queensland - Approaches to Weipa	1:75 000	29th June 2018	New Edition to incorporate latest bathymetric data. Produced with blue contours. Chart Aus 4 Edition 6 dated 16 November 2012 is now superseded and must be withdrawn from use.
	Plans: Port of Weipa	1:15 000		
AUS 37 Edition 2	Australia - North West Coast - Western Australia - Port Nelson and Prince Frederick Harbour	1:75 000	29th June 2018	New Edition to incorporate latest bathymetric data. Chart Aus 37 Edition 1 dated 15 July 2011 is now superseded and must be withdrawn from use.
AUS 740 Edition 3	Australia - North West Coast - Western Australia - Port Hedland to Port Walcott	1:150 000	29th June 2018	New Edition to shift vertical datum from ISLW to LAT. Produced with blue contours. Chart Aus 740 Edition 2 dated 24 August 2012 is
	Plan: Depuch Island Anchorage	1:500 000		

545 AUSTRALIA - Products - New Charts, New Editions, Withdrawn Charts

**now superseded and must
be withdrawn from use.**

Chart permanently withdrawn

Charts listed above as withdrawn no longer meet chart carriage requirements and should be marked as "superseded" and replaced with the new chart/ new edition listed prior to passage through the area covered by the new chart.

When placing orders with a chart agent between notice of forthcoming edition and its publication, mariners should advise whether their order pertains to the current edition or the new edition.

For further details refer to the AHS website at www.hydro.gov.au for new edition and new chart stock arrival information.

546 AUSTRALIA - Products - New Charts and New Editions to be published shortly

Australian Hydrographic Service

New Charts to be published shortly

<i>Chart</i>	<i>Title</i>	<i>Scale</i>	<i>Expected Publication Date</i>	<i>Remarks</i>
NIL				

New Editions to be published shortly

<i>Chart</i>	<i>Title</i>	<i>Scale</i>	<i>Expected Publication Date</i>	<i>Remarks</i>
AUS 17	Approaches to Maningrida	1:50 000	27 July 2018	New Edition to incorporate latest bathymetric data

547 Erratum

Commonwealth Department of the Environment and Energy

Australian Notice to Mariners number 507/2018, published in edition 13, source authority for the notice is incorrect. The correct source authority is Commonwealth Department of the Environment and Energy.

548 HF Coast Radio Cairns and Coast Radio Gladstone broadcast changes

Maritime Safety Queensland

Mariners are advised that Maritime Safety Queensland will cease the direct delivery of HF services from Coast Radio Cairns and Coast Radio Gladstone from midnight 30th June 2018.

The service will be delivered by 'Charleville Radio' who will maintain at 24/7 listening watch and deliver Maritime Safety Information, on Maritime Safety Queensland's behalf on HF frequencies 4125, 6215, 8291, 12290 and 16420KHz.

Mariners should contact 'Charleville Radio' from midnight 30th June 2018 for HF services.

549 AUSTRALIA - Product - Amendment to Seafarers Handbook for Australian Waters - 4th Edition

Port Authority of New South Wales

Chapter 12 – New South Wales Port Table - Botany Bay 12.6.2 - page 242

Replace table with accompanying block

Chapter 12 – New South Wales Port Table - Sydney 12.6.2 - page 243

Replace table with accompanying block

550 AUSTRALIA - TASMAN SEA - Macquarie Island - Marine parks

Australian Hydrographic Office

Aus 4074 (INT 74) [398/2017]

Insert accompanying block

54° 47'.05 S 158° 35'.00 E

551 AUSTRALIA - NEW SOUTH WALES - Newcastle - Depths

Australian Hydrographic Office

Aus 207 [94/2018]

Insert	accompanying block	32° 55'.5 S	151° 48'.5 E
--------	--------------------	-------------	--------------

Aus 208 [271/2018]

Insert	depth, 19 ₇ m, enclosed by contour	32° 56'.132 S	151° 48'.465 E
	depth, 18 ₃ m, and extend contour E to enclose	32° 54'.879 S	151° 48'.387 E
	depth, 18 ₉ m, and extend contour S to enclose	32° 54'.764 S	151° 48'.470 E
Delete	depth, 19 ₆ m	32° 54'.91 S	151° 48'.40 E

552 AUSTRALIA - QUEENSLAND - Abbot Point - Chart note

UKHO

Aus 255 [NE 1/6/2018]

Replace	note, with accompanying note	19° 45'.574 S	148° 09'.707 E
---------	------------------------------	---------------	----------------

553 AUSTRALIA - QUEENSLAND - Cleveland Bay to Moreton Bay - Historic wreck legend

Australian Hydrographic Office

Aus 236 [NE 8/4/2011]

Insert	magenta legend, <i>Historic Wk (see Note)</i>	27° 30'.01 S	153° 22'.43 E
	magenta legend, <i>Historic Wk (see Note)</i>	27° 28'.73 S	153° 24'.14 E
	magenta legend, <i>Historic Wk (see Note)</i>	27° 15'.28 S	153° 23'.16 E
	magenta legend, <i>Historic Wks (see Note)</i>	27° 04'.51 S	153° 21'.97 E

Aus 256 [NE 4/7/2014]

Insert	magenta legend, <i>Historic Wk (see Note)</i>	19° 10'.75 S	146° 50'.54 E
	accompanying note	19° 17'.262 S	146° 39'.669 E

Aus 814 [191/2018]

Insert	magenta legend, <i>Historic Wk (see Note)</i>	27° 30'.01 S	153° 22'.43 E
	magenta legend, <i>Historic Wk (see Note)</i>	27° 28'.73 S	153° 24'.14 E
	magenta legend, <i>Historic Wk (see Note)</i>	27° 15'.28 S	153° 23'.16 E

554 AUSTRALIA - QUEENSLAND - Shoal Point - Light buoy

Maritime Safety Queensland Notice 247/2018

Aus 249 [NE 18/7/2014]

Delete	topmark	21° 00'.7 S	149° 11'.1 E
--------	---------	-------------	--------------

Aus 251 [1060/2017]

Delete	topmark	21° 00'.7 S	149° 11'.1 E
--------	---------	-------------	--------------

Aus 823 [403/2017]

Delete	topmark	21° 00'.7 S	149° 11'.1 E
--------	---------	-------------	--------------

Aus 824 [436/2018]

Delete	topmark	21° 00'.7 S	149° 11'.1 E
--------	---------	-------------	--------------

555 AUSTRALIA - QUEENSLAND - Southport - Crab Island - Light buoys

Maritime Safety Queensland

Aus 230 [194/2018]

Insert	special cylindrical light buoy, <i>Fl. Y. 2·5s</i> , without topmark	27° 54'.679 S	153° 24'.572 E
	special cylindrical light buoy, <i>Fl. Y. 2·5s</i> , without topmark	27° 54'.506 S	153° 24'.619 E
	special cylindrical light buoy, <i>Fl. Y. 2·5s</i> , without topmark	27° 54'.294 S	153° 24'.434 E
	special cylindrical light buoy, <i>Fl. Y. 2·5s</i> , without topmark	27° 54'.257 S	153° 24'.527 E
	special cylindrical light buoy, <i>Fl. Y. 2·5s</i> , without topmark	27° 54'.018 S	153° 24'.446 E

556 AUSTRALIA - QUEENSLAND - Townsville - Ross River - Buoy shape

Maritime Safety Queensland

Aus 257 [437/2018]

Replace	light buoy with, special pillar light buoy, <i>Fl. Y. 3s E4</i> , without topmark	19° 15'.17 S	146° 51'.03 E
---------	---	--------------	---------------

557 AUSTRALIA - QUEENSLAND - Townsville - Ross Island - Signal station removed

Maritime Safety Queensland

Aus 257 [556/2018]

Delete	legend SS(Traffic)	19° 15'.18 S	146° 49'.91 E
--------	--------------------	--------------	---------------

558 PAPUA NEW GUINEA - Tancred Reef - Depth northwestwardsMV *Fugro Equator***Aus 520 [392/2018]**

Insert	depth, <i>10m</i> , enclosed by contour	8° 34'.50 S	148° 40'.25 E
--------	---	-------------	---------------

Aus 521 [1076/2017]

Insert	depth, <i>10m</i> , enclosed by contour	8° 34'.50 S	148° 40'.25 E
--------	---	-------------	---------------

Aus 4620 (INT 620) [476/2018]

Insert	depth, <i>10m</i> , enclosed by contour	8° 34'.5 S	148° 40'.3 E
--------	---	------------	--------------

Aus 4621 (INT 621) [NE 22/9/2017]

Insert	depth, <i>10m</i> , enclosed by contour	8° 34'.5 S	148° 40'.3 E
--------	---	------------	--------------

559 AUSTRALIA - TIMOR SEA - Sahul Banks - Marine parks

Australian Hydrographic Office

Aus 314 [441/2018]

Insert	accompanying block	12° 21'.25 S	123° 15'.25 E
--------	--------------------	--------------	---------------

560 AUSTRALIA - WESTERN AUSTRALIA - Albany - Light buoy southwestwards

University of Western Australia

Aus 759 [594/2016]

Insert	special spherical light buoy, <i>Fl(5) Y. 20s 4M</i> , without topmark	35° 27'.71 S	117° 43'.81 E
--------	--	--------------	---------------

561 AUSTRALIA - WESTERN AUSTRALIA - Carnarvon - Nav aids

Department of Transport WA

Aus 331 [201/2018]

Insert	light, <i>Aero Q 22M (occas)</i>	24° 52'.37 S	113° 40'.31 E
	light, <i>Aero Fl.R 98m</i>	24° 54'.36 S	113° 43'.24 E

Delete	light	24° 53'.0 S	113° 39'.8 E
	radio mast	24° 54'.2 S	113° 43'.0 E

Aus 4725 (INT 725) [NE 13/7/2018]

Amend	light description to <i>Aero Q 22M</i>	24° 53'.0 S	113° 40'.2 E
-------	--	-------------	--------------

562 AUSTRALIA - WESTERN AUSTRALIA - Centaur Reef - Wrecks

Australian Hydrographic Office

Aus 84 (Port Gregory) [650/2017]

Insert	magenta legend, <i>Historic Wk (see Note)</i>	28° 11'.617 S	114° 14'.337 E
--------	---	---------------	----------------

563 AUSTRALIA - WESTERN AUSTRALIA - North West Cape to Montebello Islands - Wells
Woodside Energy Ltd

Aus 43 [1201/2016]

Insert	depth, 464m, enclosed by danger circle with legend, <i>Well</i>	13° 55'.87 S	122° 00'.97 E
	depth, 437m, enclosed by danger circle with legend, <i>Well</i>	13° 56'.81 S	121° 58'.61 E

Delete	obstruction with legend, <i>Well</i>	13° 56'.8 S	121° 58'.8 E
--------	--------------------------------------	-------------	--------------

Aus 311 [100/2018]

Insert	depth, 154m, enclosed by danger circle with legend, <i>Well</i>	9° 35'.32 S	128° 09'.30 E
	depth, 91m, enclosed by danger circle with legend, <i>Well</i>	9° 43'.98 S	128° 07'.50 E

Aus 322 [1201/2016]

Insert	depth, 464m, enclosed by danger circle with legend, <i>Well</i>	13° 55'.87 S	122° 00'.97 E
	depth, 437m, enclosed by danger circle with legend, <i>Well</i>	13° 56'.81 S	121° 58'.61 E
	depth, 646m, enclosed by danger circle with legend, <i>Well</i>	14° 21'.75 S	121° 39'.57 E
	depth, 496m, enclosed by danger circle with legend, <i>Well</i>	14° 36'.47 S	121° 34'.74 E
	depth, 672m, enclosed by danger circle with legend, <i>Well</i>	14° 31'.87 S	121° 29'.91 E

Delete	obstruction with legend, <i>Well</i>	13° 56'.8 S	121° 58'.8 E
--------	--------------------------------------	-------------	--------------

Aus 327 [446/2018]

Insert	depth, 113m, enclosed by danger circle with legend, <i>Well</i>	19° 30'.33 S	116° 20'.91 E
	depth, 105m, enclosed by danger circle with legend, <i>Well</i>	19° 46'.06 S	115° 53'.24 E
	depth, 70m, enclosed by danger circle with legend, <i>Well</i>	19° 50'.00 S	115° 37'.24 E
	depth, 80m	19° 52'.76 S	115° 38'.14 E

Move	obstruction with legend, <i>Well</i>	19° 33'.35 S	116° 29'.53 E
	to	19° 33'.29 S	116° 29'.84 E

Delete	danger circle with legend, <i>Well</i>	19° 45'.7 S	115° 53'.4 E
--------	--	-------------	--------------

Aus 328 [101/2018]

Insert	depth, 166m, enclosed by danger circle with legend, <i>Well</i>	20° 00'.34 S	115° 11'.06 E
	depth, 146m, enclosed by danger circle with legend, <i>Well</i>	20° 03'.27 S	115° 10'.42 E
	depth, 130m, enclosed by danger circle with legend, <i>Well</i>	20° 04'.89 S	115° 11'.08 E
	depth, 172m, enclosed by danger circle with legend, <i>Well</i>	20° 05'.14 S	115° 05'.68 E
	depth, 166m, enclosed by danger circle with legend, <i>Well</i>	20° 07'.15 S	115° 05'.81 E
	depth, 165m, enclosed by danger circle with legend, <i>Well</i>	20° 09'.12 S	115° 03'.98 E
	depth, 1341m, enclosed by danger circle with legend, <i>Well</i>	19° 25'.55 S	114° 22'.56 E
	depth, 1291m, enclosed by danger circle with legend, <i>Well</i>	19° 23'.99 S	114° 18'.70 E
	depth, 1020m, enclosed by danger circle with legend, <i>Well</i>	20° 50'.95 S	113° 59'.89 E
	depth, 819m, enclosed by danger circle with legend, <i>Well</i>	21° 33'.94 S	113° 50'.26 E

Aus 329 [968/2017]

Insert	depth, 1020m, enclosed by danger circle with legend, <i>Well</i>	20° 50'.95 S	113° 59'.89 E
	depth, 819m, enclosed by danger circle with legend, <i>Well</i>	21° 33'.94 S	113° 50'.26 E

Aus 741 [781/2017]

Insert	depth, 77m, enclosed by danger circle with legend, <i>Well</i>	19° 33'.29 S	116° 29'.84 E
	depth, 74m, enclosed by danger circle with legend, <i>Well</i>	19° 33'.81 S	116° 29'.63 E
	depth, 113m, enclosed by danger circle with legend, <i>Well</i>	19° 30'.33 S	116° 20'.91 E
	pipeline between	19° 33'.42 S	116° 29'.36 E
		19° 33'.29 S	116° 29'.84 E

Delete	danger circle with legend, <i>Well</i>	19° 33'.3 S	116° 29'.5 E
--------	--	-------------	--------------

Aus 742 [318/2018]

Insert	depth, 130m, enclosed by danger circle with legend, <i>Well</i>	20° 04'.89 S	115° 11'.08 E
	depth, 172m, enclosed by danger circle with legend, <i>Well</i>	20° 05'.14 S	115° 05'.68 E

564 AUSTRALIA - WESTERN AUSTRALIA - Port Hedland - Light buoy

Pilbara Ports Authority Notice 16/2018

Aus 52 [445/2018]

Insert	special spherical light buoy, <i>Fl(5)</i> Y.20s, without topmark	20° 10'.661 S	118° 30'.240 E
--------	---	---------------	----------------

Aus 53 [486/2018]

Insert	special spherical light buoy, <i>Fl(5)</i> Y.20s, without topmark	20° 10'.66 S	118° 30'.24 E
--------	---	--------------	---------------

565 AUSTRALIA - WESTERN AUSTRALIA - Port of Bunbury - Koombana Channel - Lights removed

Department of Transport WA

Aus 115 (Port of Bunbury) [200/2018]

Delete	light, 2F.G	33° 19'.25 S	115° 38'.48 E
	light, 2F.R	33° 19'.25 S	115° 38'.50 E

566 AUSTRALIA - SOUTH AUSTRALIA - Great Australian Bight - Marine park

Australian Hydrographic Office

Aus 4727 (INT 727) [448/2016]

Insert	accompanying block	31° 48'.325 S	130° 02'.378 E
--------	--------------------	---------------	----------------

567 AUSTRALIA - SOUTH AUSTRALIA - Kangaroo Island - Wrecks south eastwards

Australian Hydrographic Office

Aus 4728 (INT 728) [284/2018]

Delete	65m, enclosed by danger circle with legend, <i>Wk</i>	36° 56'.2 S	137° 56'.8 E
	40m, enclosed by danger circle with legend, <i>Wk</i>	36° 52'.3 S	139° 06'.7 E

568 AUSTRALIA - SOUTH AUSTRALIA - Kingscote - Depths

Australian Hydrographic Office

Aus 129 [202/2018]

Insert	accompanying block B	35° 39'.45 S	137° 39'.24 E
	accompanying block C	35° 47'.47 S	137° 54'.30 E

Aus 129 (Kingscote) [202/2018]

Insert	accompanying block A	35° 39'.11 S	137° 38'.81 E
--------	----------------------	--------------	---------------

569 AUSTRALIA - VICTORIA - Corner Inlet - Port Albert Entrance - Light buoys

Gippsland Ports Notice 215/2018

Aus 181 [449/2018]

Move	light buoy	38° 44'.74 S	146° 41'.27 E
	to	38° 45'.22 S	146° 41'.39 E
	light buoy	38° 43'.97 S	146° 42'.67 E
	to	38° 45'.58 S	146° 42'.18 E

Aus 182 (Approaches to Port Albert) [449/2018]

Delete	light buoy	38° 44'.74 S	146° 41'.26 E
--------	------------	--------------	---------------

Aus 357 [398/2018]

Move	light buoy	38° 43'.97 S	146° 42'.67 E
	to	38° 45'.58 S	146° 42'.18 E

570 AUSTRALIA - VICTORIA - Port Phillip - Corio Bay - Depths

Australian Hydrographic Office

Aus 153 [105/2018]Replace depth, 5₆m, with depth, 8₆m

38° 08'.12 S

144° 21'.81 E

Aus 157 [105/2018]Insert depth, 7₇m

38° 08'.019 S

144° 21'.780 E

Delete depth, 5₆m

38° 08'.12 S

144° 21'.81 E

571 AUSTRALIA - VICTORIA - Port Phillip - The Narrows - Beacon removed

Parks Victoria Notice 219/2018

Aus 150 (The Narrows) [205/2018]

Delete beacon

38° 30'.98 S

145° 21'.87 E

572 AUSTRALIA - VICTORIA - Western Port - Depths
Australian Hydrographic Office

Aus 150 [571/2018]

Insert	depth, 2_8m , enclosed by contour	38° 15'.45 S	145° 20'.21 E
	depth, -0_7m , enclosed by contour	38° 31'.19 S	145° 21'.70 E

Replace	depth, 0_4m , with depth, -0_7m , enclosed by contour	38° 30'.9 S	145° 22'.0 E
---------	---	-------------	--------------

Aus 150 (Eastern Entrance to Western Port) [571/2018]

Insert	depth, -0_7m , enclosed by contour	38° 31'.193 S	145° 21'.699 E
--------	--------------------------------------	---------------	----------------

Replace	depth, 0_4m , with depth, -0_7m , enclosed by contour	38° 30'.85 S	145° 22'.04 E
---------	---	--------------	---------------

Aus 150 (The Narrows) [571/2018]

Replace	depth, 0_4m , with depth, -0_7m , enclosed by contour	38° 30'.79 S	145° 22'.04 E
	depth, 0_4m , with depth, -0_7m , enclosed by contour	38° 30'.85 S	145° 22'.04 E
	depth, 0_7m , with depth, -0_3m , enclosed by contour	38° 31'.03 S	145° 21'.84 E
	depth, 0_4m , with depth, -0_7m , enclosed by contour	38° 31'.19 S	145° 21'.70 E

Aus 151 (Continuation of Western Port) [105/2018]

Insert	depth, -0_3m , and extend contour W to enclose	38° 15'.063 S	145° 18'.528 E
	depth, 0_2m	38° 15'.535 S	145° 18'.524 E
	depth, 0_4m	38° 15'.615 S	145° 18'.847 E
	depth, 4_5m , and extend contour S to enclose	38° 15'.151 S	145° 19'.455 E
	depth, -0_7m , and extend contour N to enclose	38° 15'.194 S	145° 19'.533 E
	depth, 2_8m , enclosed by contour	38° 15'.448 S	145° 20'.209 E
	depth, -0_7m , and extend 0m contour W to enclose	38° 15'.201 S	145° 21'.216 E
	contour between	38° 15'.87 S	145° 19'.42 E
		38° 15'.87 S	145° 19'.32 E
		38° 15'.94 S	145° 19'.25 E
Replace	depth, 4_6m , with depth, 4_7m	38° 15'.91 S	145° 19'.42 E
	depth, 1_8m , with depth, $1m$	38° 15'.76 S	145° 19'.84 E
	depth, 4_5m , with depth 3_9m	38° 15'.22 S	145° 20'.70 E
Delete	depth, 5_7m	38° 15'.16 S	145° 19'.42 E
	contour between	38° 15'.87 S	145° 19'.42 E
		38° 15'.94 S	145° 19'.25 E

Aus 152 (Rutherford Inlet) [247/2018]

Insert	depth, 4_5m , and extend contour S to enclose	38° 15'.151 S	145° 19'.455 E
--------	---	---------------	----------------

Replace	depth, 2_2m , with depth -0_7m , and 0m extend contour N to enclose	38° 15'.19 S	145° 19'.53 E
	depth, 1_2m , with depth, 0_4m	38° 15'.61 S	145° 18'.85 E
	depth, 0_5m , with depth, 0_2m	38° 15'.54 S	145° 18'.52 E
	depth, 1_1m , with depth, -0_3m , and extend contour SW to enclose	38° 15'.06 S	145° 18'.53 E

573(T)/2018 AUSTRALIA - NEW SOUTH WALES - Callo Point - Exclusion zone
NSW Roads and Maritime Services

A wreck exists off Callo Point and an exclusion zone exists bounded by the following positions:

36°36'.20 S 150°02'.45 E
36°36'.23 S 150°04'.13 E
36°37'.80 S 150°02'.58 E
36°37'.81 S 150°01'.32 E.

Mariners are advised to navigate with caution.

Chart temporarily affected - Aus 806

574(T)/2018 AUSTRALIA - NEW SOUTH WALES - Jervis Bay - Light buoys
Jervis Bay Cruising Yacht Club

The special light buoy, *Fl.3s* (35°04'.00 S 150°40'.74 E) has been destroyed.

The special light buoy, *Fl.3s* (35°01'.26 S 150°43'.23 E) is off station.

Chart temporarily affected - Aus 193

575(T)/2018 AUSTRALIA - NEW SOUTH WALES - Newcastle - Live firing
Department of Defence

Military exercise area Williamstown Air Weapons Range will be activated for air to surface laser firing from 17 July to 20 July 2018 in the area bounded by the following positions:

33° 09'.00 S 152° 06'.00 E
32° 44'.50 S 152° 19'.50 E
32° 36'.00 S 153° 24'.25 E
33° 03'.00 S 153° 23'.00 E
33° 17'.00 S 153° 11'.00 E
33° 25'.00 S 152° 18'.67 E
33° 20'.50 S 152° 15'.00 E.

Mariners are advised to navigate with caution in the area.

Chart temporarily affected - Aus 489 - Aus 809 - Aus 810 - Aus 4643 (INT 643)

576(T)/2018 AUSTRALIA - QUEENSLAND - Cairns - Light unreliable
Maritime Safety Queensland Notice 233(T)/2018

The rear red light sector, *F & Al.WRG.4s 18m 11M* (16° 55'.17 S 145° 46'.83 E), is unreliable.

Chart temporarily affected - Aus 262 - Aus 263 - Aus 830

577(T)/2018 AUSTRALIA - QUEENSLAND - Daintree River - Light buoy withdrawn
Maritime Safety Queensland

The starboard lateral light buoy, *Fl.G.3s* (16° 18'.74 S 145° 27'.04 E), has been temporarily withdrawn.

Chart temporarily affected - Aus 831

578(T)/2018 AUSTRALIA - QUEENSLAND - Hervey Bay - Wreck
Maritime Safety Queensland Notice 238(T)/2018

A wreck marked by two special light buoys, *Fl.Y.5s*, exists in position 24° 53'.02 S 152° 48'.05 E.

Chart temporarily affected - Aus 817

579(T)/2018 AUSTRALIA - QUEENSLAND - Mackay - Slade Rock - Light buoy restored

Former Notice - 376(T)/2017 is cancelled
Maritime Safety Queensland 246/2018

Cancel this notice on receipt.

Chart formerly affected - Aus 249 - Aus 250 - Aus 823 - Aus 824

580(T)/2018 AUSTRALIA - QUEENSLAND - Shoal Point - Light buoy

Former Notice - 366(T)/2018 is cancelled
Maritime Safety Queensland Notice 247/2018

Cancel this notice on receipt.

Chart formerly affected - Aus 249 - Aus 251 - Aus 823 - Aus 824

581(T)/2018 AUSTRALIA - QUEENSLAND - Shoalwater Bay - Military exercise complete

Former Notice - 496(T)/2018 is cancelled
Australian Maritime Safety Authority

Cancel this notice on receipt.

Chart formerly affected - Aus 248 - Aus 367 - Aus 820

582(T)/2018 AUSTRALIA - QUEENSLAND - Whitsunday Island - Cid Harbour - Subsea operations

Maritime Safety Queensland Notice 240(T)/2018

Vessels *Mighty Chieftan* and *Triton* are conducting salvage operations in approximate position 20° 14'.624 S 148° 56'.646 E, marked by two special light buoys, *Fl. Y. 2.5s*.

Vessels will display appropriate colours and shapes and monitor VHF Ch 16.

Mariners are advised to navigate with caution.

Chart temporarily affected - Aus 252 - Aus 253

583(T)/2018 AUSTRALIA - TIMOR SEA - Bathurst Island - Seismic survey complete

Former Notice - 369(T)/2018 is cancelled
Santos Ltd

Cancel this notice on receipt.

Chart formerly affected - Aus 309 - Aus 310 - Aus 311 - Aus 315 - Aus 4721 (INT 721)

584(T)/2018 AUSTRALIA - TIMOR SEA - Seismic survey northwards

Santos Ltd

MV *Polarcus Naila*, and support vessels *Mermaid Vantage* and *Empress* are conducting a seismic survey in an area bounded by the following positions:

13° 22'.23 S 128° 59'.36 E
13° 22'.22 S 128° 45'.69 E
13° 02'.72 S 128° 13'.92 E
13° 08'.31 S 128° 13'.80 E
13° 15'.53 S 128° 38'.51 E
13° 02'.27 S 128° 53'.96 E
13° 44'.14 S 128° 59'.36 E.

Vessels will display appropriate lights and shapes.

Mariners are advised to navigate with caution in the area.

Chart temporarily affected - Aus 316 - Aus 318 - Aus 725 - Aus 726 - Aus 4603 (INT 603) - Aus 4721 (INT 721)

585(T)/2018 AUSTRALIA - WESTERN AUSTRALIA - Point Quobba - Light restored*Former Notice - 222(T)/2018 is cancelled*

Australian Maritime Safety Authority Auscoast 035/2018

Cancel this notice on receipt.

Chart formerly affected - Aus 331 - Aus 746 - Aus 4725 (INT 725)**586(T)/2018 AUSTRALIA - WESTERN AUSTRALIA - Port Hedland - Harbour works**

Pilbara Ports Authority Notice 15(T)/2018

Works associated with the removal and replacement of channel markers is in progress between 20° 10'.38 S 118° 30'.56 E and 20° 18'.70 S 118° 34'.33 E.

Vessels will monitor VHF Ch 12 & 16.

Mariners are advised to navigate with caution in the area.

Chart temporarily affected - Aus 52 - Aus 53**587(T)/2018 AUSTRALIA - WESTERN AUSTRALIA - Rankin Bank - Subsea operations northeastwards completed***Former Notice - 77(T)/2017 is cancelled*

Subsea 7

Cancel this notice on receipt.

Chart formerly affected - Aus 327**588(T)/2018 AUSTRALIA - WESTERN AUSTRALIA - Rankin Bank - Subsea operations**

Subsea 7 , Australian Maritime Safety Authority Auscoast 153/2018

MSV *Skandi Acergy* and support vessels are conducting subsea operations in an area bounded by the following positions:

19° 35'.0 S 115° 35'.0 E

19° 55'.0 S 115° 35'.0 E

19° 55'.0 S 116° 00'.0 E

19° 35'.0 S 116° 00'.0 E.

Mariners are advised to navigate with caution in the area.

Chart temporarily affected - Aus 327 - Aus 4723 (INT 723)**589(T)/2018 AUSTRALIA - WESTERN AUSTRALIA - Rankin Bank - Subsea operations completed***Former Notice - 425(T)/2018 is cancelled*

Australian Maritime Safety Authority cancel 103/2018

Cancel this notice on receipt.

Chart formerly affected - Aus 327**590(T)/2018 AUSTRALIA - WESTERN AUSTRALIA - Rottnest Island - Subsea operations**

Blue Ocean Monitoring

Two Teledyne Slocum underwater gliders will be operating in an area bounded by the following positions:

31°45'.00 S 115°26'.00 E

31°45'.00 S 115°00'.00 E

31°30'.00 S 115°00'.00 E

31°30'.00 S 115°20'.00 E.

Mariners are advised to navigate with caution.

Chart temporarily affected - Aus 754

591(T)/2018 AUSTRALIA - WESTERN AUSTRALIA - Rottnest Island - Subsea operations

Former Notice - 539(T)/2018 is cancelled
Blue Ocean Monitoring

Cancel this notice on receipt.

Chart formerly affected - Aus 754

592(T)/2018 AUSTRALIA - WESTERN AUSTRALIA - Trigg Island - Light buoy

Department of Transport WA Notice 97/2018

A special light buoy, Q(5) Y 20s exists in position 31° 52'.70 S 115° 43'.11 E.

Chart temporarily affected - Aus 112

593(T)/2018 AUSTRALIA - VICTORIA - Port Phillip - Frankston - Light beacon relit

Former Notice - 340(T)/2018 is cancelled
Parks Victoria Notice 214/2018

Cancel this notice on receipt.

Chart formerly affected - Aus 143

594(T)/2018 AUSTRALIA - VICTORIA - Port Phillip - Mount Martha - Light buoy off station

Parks Victoria Notice 218(T)/2018

The special conical light buoy, Fl(3) Y. 10s R1 (38° 16'.47 S 144° 58'.36 E), is off station.

Chart temporarily affected - Aus 143 - Aus 158

595(T)/2018 AUSTRALIA - VICTORIA - Western Port - Watson Inlet - Beacon destroyed

Parks Victoria Notice 220(T)/2018

The starboard lateral beacon, (38° 15'.29 S 145° 15'.78 E), has been destroyed, a starboard lateral conical buoy, without topmark, exists in situ.

Chart temporarily affected - Aus 151

596(T)/2018 AUSTRALIA - TASMANIA - D'entrecasteaux Channel - Alonnah - Light unlit

Marine and Safety Tasmania Notice 119/2018

The light, Fl.G.5s 2M (43° 18'.75 S 147° 14'.49 E) is unlit.

Chart temporarily affected - Aus 173 - Aus 795

597(T)/2018 AUSTRALIA - TASMANIA - Storm Bay - Scientific instrument

Marine and Safety Tasmania Notice 116/2018

A special spherical light buoy, Fl. Y. 1·5s, exists in position 43° 12'.70 S 147° 27'.25 E.

Chart temporarily affected - Aus 173 - Aus 795 - Aus 796

598(T)/2018 AUSTRALIA - TASMANIA - Storm Bay - Buoy off station

Marine and Safety Tasmania Notice M120/2018

A black can buoy (43° 10'.18 S 147° 26'.32 E) is off station.

Chart temporarily affected - Aus 173

599(T)/2018 AUSTRALIA - TEMPORARY AND PRELIMINARY NOTICES

Former Notice - 308(T)/2018 is cancelled
Australian Hydrographic Office

<i>Notice</i>	<i>Charts affected</i>	<i>Locality and Subject</i>
		BASS STRAIT
		<i>King Island</i>
89/2018	Aus789	Scientific instrument
434/2014	Aus357 4644	Light unlit
		CORAL SEA
		<i>Bampton Reef</i>
639/2015	Aus4604	Light buoy off station northwards
		<i>Diamond Islets</i>
225/2017	Aus614 4620 4621	Shoaling
		<i>Portlock Reefs</i>
989/2017	Aus377	Reefs
		NEW SOUTH WALES
		<i>Batemans Bay</i>
965/2016	Aus191	Dredging operations
		<i>Ben Buckler</i>
909/2017	Aus197 200 808	Scientific instruments southeastwards
		<i>Callo Point</i>
573/2018	Aus806	Exclusion zone
		<i>Cape Byron</i>
709/2016	Aus813	Obstructions eastwards
		<i>Clarence River</i>
43/2015	Aus222	Obstructions
213/2017	Aus222 812 813	Harbour works
		<i>Jervis Bay</i>
515/2017	Aus193	Light unlit
71/2018	Aus193	Beacon destroyed
210/2018	Aus193	Light buoy
574/2018	Aus193	Light buoys
		<i>Kiama</i>
1029/2017	Aus191 489 808 4643	Light range reduced
		NEW ZEALAND - NOUVELLE CALEDONIE - Fiji Islands
831/2017	Aus197 198 489 609 808 4060 4601 4602 4604 4643	Cable operations
		<i>Newcastle</i>
575/2018	Aus489 809 810 4643	Live firing
		<i>Newcastle to Cape Hawke</i>
490/2018	Aus207 209 219 489 809 810 4643	Obstructions
		<i>Port Jackson</i>
65/2017	Aus200 202	Harbour works
706/2017	Aus200 202	Scientific instruments
323/2018	Aus200 202	Harbour works; exclusion zone
400/2018	Aus200 203	Shoaling
		<i>Port Kembla</i>
400/2016	Aus194	Exclusion zone

599(T)/2018 AUSTRALIA - TEMPORARY AND PRELIMINARY NOTICES

<i>Notice</i>	<i>Charts affected</i>	<i>Locality and Subject</i>
966/2016	Aus192	<i>Twofold Bay</i> Berth damaged
1035/2016	Aus192	Scientific instruments
559/2017	Aus192	Scientific instruments
491/2018	Aus191 807 4643	<i>Ulladulla</i> Light altered
NORTHERN TERRITORY		
413/2018	Aus23 722	<i>Apsley Strait</i> Light buoy off station
414/2018	Aus22 309 310 722	<i>Bathurst Island</i> Survey and drilling operations
182/2017	Aus25	<i>Darwin</i> Light buoy unlit
991/2017	Aus24	Dredging operations
119/2018	Aus24	Lights unlit
416/2018	Aus26 28	Light unlit
894/2015	Aus28	<i>East Arm</i> Lights
1193/2014	Aus20	<i>East Vernon Island</i> Obstruction
461/2018	Aus29 309 316 722 4721	<i>Fish Reef</i> Light unlit
QUEENSLAND		
659/2016	Aus255 825 826	<i>Abbot Point</i> Scientific instruments
369/2017	Aus255 826	Light beacon destroyed
370/2017	Aus255 826	Nav aids off station; nav aids destroyed; depths unreliable; obstructions
980/2017	Aus255	Mooring buoys
745/2017	Aus269	<i>Airlie Beach</i> Wreck
884/2016		<i>Bowen</i> Light beacon destroyed
968/2016	Aus268	Harbour works
326/2017	Aus268	Light buoy off station
461/2017	Aus268	Obstruction
492/2018	Aus268 825 826	Harbour works
462/2017	Aus301	<i>Boyd Point</i> Exclusion zone
403/2018	Aus301 4060 4603 4620 4720	Mooring buoys
159/2018	Aus244 245 246 271	<i>Boyne River to Gladstone</i> Dredging operations
25/2018	Aus490 816 817	<i>Breaksea Spit</i> Foul ground
213/2018	Aus236	<i>Bribie Island</i> Shoaling
747/2017	Aus237 238	<i>Brisbane</i> Harbour works
26/2018	Aus237	Light beacon destroyed
27/2018	Aus236	Harbour works

599(T)/2018 AUSTRALIA - TEMPORARY AND PRELIMINARY NOTICES

<i>Notice</i>	<i>Charts affected</i>	<i>Locality and Subject</i>
		<i>Brisbane River</i>
1181/2016	Aus238	Harbour works; light beacon withdrawn
1205/2016	Aus237	Harbour works
66/2017	Aus238	Light unlit
176/2017	Aus238	Scientific instrument
519/2017	Aus237	Virtual AIS
561/2017	Aus238	Light buoys
611/2017	Aus238	Harbour works
1088/2017	Aus237	Dredging operations
324/2018	Aus238	Harbour works
358/2018	Aus238	Harbour works
454/2018	Aus236 237	Light buoy
494/2018	Aus238	Harbour works
		<i>Bundaberg</i>
605/2016	Aus242	Shoaling
252/2017	Aus242	Nav aids off station
520/2017	Aus242	Harbour works
707/2017	Aus242	Anchoring prohibited
793/2017	Aus242	Dredging operations
455/2018	Aus242	Light beacon
		<i>Bunker Group</i>
606/2016	Aus490 818 819	Foul ground westwards
		<i>Burnett River</i>
250/2018	Aus242	Wreck
		<i>Cairns</i>
253/2017	Aus262 263	Shoaling
665/2017	Aus263 264	Dredging operations
1090/2017	Aus263 264	Wreck
251/2018	Aus264	Wreck
576/2018	Aus262 263 830	Light unreliable
		<i>Cape Bowling Green</i>
1214/2013	Aus826 827	Scientific instrument
1034/2017	Aus826 827	Light buoy off station eastwards
		<i>Cape Flattery</i>
708/2017	Aus270	Shoaling
		<i>Cooktown</i>
926/2016	Aus270	Obstruction
405/2018	Aus270	Light buoys unlit
		<i>Daintree River</i>
577/2018	Aus831	Light buoy withdrawn
		<i>Daydream Island</i>
418/2017	Aus252 253	Lights unlit; light buoys established
		<i>Ellis Channel</i>
834/2017	Aus293 299	Light buoy off station
		<i>First Three Mile Opening</i>
28/2018	Aus281	Light unreliable
		<i>Fitzroy Island</i>
72/2018	Aus830	Light buoys
		<i>Fitzroy River</i>
661/2016	Aus819	Scientific instrument

599(T)/2018 AUSTRALIA - TEMPORARY AND PRELIMINARY NOTICES

<i>Notice</i>	<i>Charts affected</i>	<i>Locality and Subject</i>
750/2017	Aus826	<i>Flagstaff Bay</i> Light unlit
325/2018	Aus235 236	<i>Flinders Reef</i> Light buoy restored
456/2018	Aus235 236	Light buoy off station
1182/2016	Aus816	<i>Gardner Bank</i> Wreck
579/2014	Aus245 246 819	<i>Gladstone</i> Scientific instruments
568/2016	Aus245 271	Harbour works
68/2017	Aus244 245 271	Harbour works
291/2017	Aus245	Shoaling
521/2017	Aus258	<i>Gladys Inlet</i> Light buoy off station
564/2017	Aus268 825	<i>Gloucester Passage</i> Light buoys off station
361/2018	Aus230	<i>Gold Coast</i> Scientific instruments
110/2018	Aus230	<i>Gold Coast Seaway</i> Shoaling
406/2018	Aus230	<i>Gold Coast Seaway to Narrowneck Reef</i> Dredging operations
523/2017	Aus821 824 825	<i>Great Barrier Reef</i> Shoaling
664/2016	Aus241	<i>Great Sandy Strait</i> Scientific instrument
971/2016	Aus241 817	Shoaling
372/2017	Aus241 817	Light buoys
982/2017	Aus240	Light beacon destroyed
1035/2017	Aus240	Beacon destroyed
214/2018	Aus240	Light beacon destroyed
566/2017	Aus254	<i>Hamilton Island</i> Harbour works
401/2016	Aus250	<i>Hay Point</i> Scientific instrument
665/2016	Aus249 250 823	Light unlit
20/2017	Aus250	Obstructions
292/2017	Aus249 823	Obstruction
578/2018	Aus817	<i>Hervey Bay</i> Wreck
293/2017	Aus259 267	<i>Hinchinbrook Channel</i> Light buoy unlit; light beacon unlit
215/2018	Aus259	Wreck
362/2018	Aus259	Light buoy off station
495/2018	Aus267	Light buoy off station
1369/2015	Aus828	<i>Hinchinbrook Island</i> Light buoy withdrawn
419/2017	Aus252	<i>Hook Island</i> Light beacon destroyed; light buoy established

599(T)/2018 AUSTRALIA - TEMPORARY AND PRELIMINARY NOTICES

<i>Notice</i>	<i>Charts affected</i>	<i>Locality and Subject</i>
1036/2017	Aus240 815 817	<i>Inskip Point</i> Light unlit
67/2016 363/2018	Aus6 Aus6	<i>Karumba</i> Shoaling Dredging operations
872/2017	Aus270 280 281 833 834	<i>LADS Passage</i> Shoaling
917/2017	Aus252	<i>Laguna Quays</i> Shoaling; nav aids
743/2015 375/2017	Aus259 267 Aus259 267	<i>Lucinda</i> Light buoy off station; light buoy unlit Shoaling
377/2017 162/2018	Aus250 Aus250	<i>Mackay</i> Traffic signal station unlit Harbour works
379/2014 919/2017	Aus256 Aus256	<i>Magnetic Island</i> Scientific instrument Shoaling
111/2018	Aus236	<i>Manly Boat Harbour</i> Drilling operations
328/2018 329/2018	Aus235 Aus235	<i>Mooloolaba</i> Dredging Shoaling
528/2018	Aus235	<i>Mooloolaba Harbour</i> Light buoy
740/2014 1122/2016 111/2017 112/2017 328/2017 421/2017 422/2017 423/2017 468/2017 526/2017 569/2017 32/2018 291/2018 408/2018 459/2018 529/2018 530/2018 531/2018	Aus236 Aus235 236 Aus236 Aus236 Aus236 Aus236 Aus236 Aus236 Aus236 Aus236 Aus236 Aus236 Aus236 Aus235 236 Aus235 236 Aus236 Aus236 Aus236	<i>Moreton Bay</i> Wreck Light buoy Beacon destroyed Wreck Light beacon destroyed Light beacon destroyed Light unlit Ship to ship transfer Cable laying operations Light beacon damaged Dredging operations Dredging operations Beacon damaged Scientific instruments Shoaling Dredging operations Scientific instrument Light Buoy;Wreck
467/2016 470/2017	Aus816 Aus816	<i>North Gardner Bank</i> Wreck Foul ground
874/2017	Aus819	<i>One Tree Island</i> Scientific instrument
667/2017	Aus367 490 820	<i>Peaked Island</i> Search and rescue exercise northeastwards

599(T)/2018 AUSTRALIA - TEMPORARY AND PRELIMINARY NOTICES

<i>Notice</i>	<i>Charts affected</i>	<i>Locality and Subject</i>
217/2018	Aus813 814	<i>Point Danger</i> Scientific instrument
987/2017 532/2018	Aus270 Aus270	<i>Port Douglas</i> Dredging operations Light buoy
379/2017	Aus252 824	<i>Proserpine River</i> Light beacon unlit
714/2016 1095/2017	Aus235 236 Aus236	<i>Pumicestone Channel</i> Scientific instruments Marine farm; light buoy
365/2018	Aus256 827	<i>Rattlesnake Island</i> Military exercise
376/2015 164/2018	Aus294 Aus294	<i>Red Island Point</i> Light buoys unlit Wreck
615/2017	Aus829 830	<i>Russell Heads</i> Light withdrawn
367/2018	Aus260 261 367 822	<i>Shoalwater Bay</i> Live firing
570/2017 497/2018	Aus252 253 269 Aus253 269	<i>Shute Harbour</i> Lights; harbour works completed Light beacons destroyed
292/2018	Aus252 253 824	<i>Surprise Rock</i> Light buoy off station
833/2016	Aus293 299	<i>Thursday Island</i> Dolphin damaged
469/2016 513/2016 380/2017 572/2017 756/2017 838/2017 926/2017 117/2018	Aus257 Aus257 Aus256 827 Aus257 Aus256 Aus257 Aus256 827 Aus256	<i>Townsville</i> Harbour works Harbour works Scientific instruments Dredging operations Diving operations Harbour works Light beacon destroyed Light beacon unlit
1274/2013	Aus831 832	<i>Two Islands</i> Wreck
330/2018	Aus241	<i>Urangan Harbour</i> Dredging operations; harbour works
1257/2016 179/2017 33/2018 255/2018 293/2018 411/2018	Aus4 Aus4 Aus4 Aus4 301 701 Aus4 Aus4	<i>Weipa</i> Harbour works Light buoy off station Light beacon destroyed Scientific instruments Dredging operations Exclusion zone
301/2016 582/2018	Aus252 253 824 Aus252 253	<i>Whitsunday Island</i> Wreck Subsea operations

599(T)/2018 AUSTRALIA - TEMPORARY AND PRELIMINARY NOTICES

<i>Notice</i>	<i>Charts affected</i>	<i>Locality and Subject</i>
34/2018	Aus252 253 269 824	<i>Whitsunday Passage</i> Wreck
473/2017	Aus240 815 817	<i>Wide Bay</i> Shoaling; navline
427/2018	Aus126 347 780	SOUTH AUSTRALIA <i>Backstairs Passage</i> Cable operations
173/2018	Aus127	<i>Cape Jaffa</i> Shoaling
436/2017	Aus485 780	<i>Fleurieu Peninsula</i> Hulk; prohibited area
1000/2016	Aus125	<i>Glenelg</i> Shoaling; dredging operations
123/2018	Aus139 781	<i>Gulf St Vincent</i> Artificial reef
1101/2017	Aus777	<i>Lucky Bay</i> Harbour works
720/2008 1048/2016 1221/2016	Aus137 Aus130 485 781 Aus130 138	<i>Port Adelaide</i> Shoaling Obstruction westwards Light beacon destroyed
620/2016	Aus136	<i>Port Pirie</i> Harbour works
438/2017	Aus132 778	<i>Snapper Point to Douglas Bank</i> Shoaling
585/2017	Aus150 151	<i>Western Port</i> Beacon removed; buoy established
485/2017	Aus135	<i>Whyalla</i> Light beacons destroyed
109/2018	Aus4601	TASMAN SEA <i>Tasman Basin</i> Light buoy off station
504/2018	Aus169	TASMANIA <i>Blackman Bay</i> Wreck
1009/2016	Aus173 795 796	<i>Bruny Island</i> Scientific instruments southeastwards
848/2017 888/2017 596/2018	Aus173 Aus173 Aus173 795	<i>D'Entrecasteaux Channel</i> Marine farm Marine farm works Light unlit
944/2016 263/2018	Aus164 Aus164	<i>Devonport</i> Light beacon destroyed Shoaling
1010/2016	Aus767 798	<i>Eddystone Point</i> Scientific instruments southeastwards

599(T)/2018 AUSTRALIA - TEMPORARY AND PRELIMINARY NOTICES

<i>Notice</i>	<i>Charts affected</i>	<i>Locality and Subject</i>
1011/2016	Aus793	<i>Flying Cloud Point</i> Scientific instruments westwards
576/2012	Aus171 796	<i>Frederick Henry Bay</i> Scientific instruments
430/2018	Aus790	<i>Hunter Island</i> Scientific instrument
36/2017 227/2018	Aus174 Aus173	<i>Huon River</i> Wreck Marine farm works
1002/2017	Aus168	<i>Launceston</i> Harbour works
264/2018	Aus798 800	<i>Lookout Head</i> Scientific instrument
169/2016 1194/2016 440/2017 587/2017 1053/2017 228/2018	Aus177 Aus177 Aus177 792 Aus177 792 Aus177 792 Aus177	<i>Macquarie Harbour</i> Scientific instruments Harbour works Scientific instruments Scientific instruments Beacon established Marine farm works
170/2016	Aus170 766 797	<i>Maria Island</i> Scientific instruments
1103/2014	Aus170 766 797	<i>Mercury Passage</i> Obstructions
372/2016	Aus171 174	<i>North West Bay</i> Mooring area
627/2016	Aus171 796	<i>Pipe Clay Head to Pitt Water</i> Scientific instruments
182/2018	Aus172	<i>Prince of Wales Bay</i> Harbour works
505/2018	Aus172	<i>River Derwent</i> Wreck
1225/2016	Aus168	<i>River Tamar</i> Scientific instruments
1104/2017 266/2018	Aus790 Aus790	<i>Robbins Island</i> Scientific instruments Light buoy off station
134/2018 183/2018	Aus175 Aus175	<i>Spring Bay</i> Marine farm Wreck
539/2017 544/2018 597/2018 598/2018	Aus171 795 796 Aus173 795 796 Aus173 795 796 Aus173	<i>Storm Bay</i> Scientific instrument Scientific instrument Scientific instrument Buoy off station
620/2017	Aus24 25 26 27 28 29 309 311 312	TIMOR SEA NORTHERN TERRITORY Pipeline operations

599(T)/2018 AUSTRALIA - TEMPORARY AND PRELIMINARY NOTICES

315 316 722 4721

<i>Notice</i>	<i>Charts affected</i>	<i>Locality and Subject</i>
223/2009 584/2018	Aus312 4721 Aus316 318 725 726 4603 4721	<i>Sahul Banks</i> Navaid; racon non operational Seismic survey northwards
358/2016	Aus377 840	TORRES STRAIT <i>Darnley Island</i> Wreck
878/2017 928/2017	Aus299 Aus299	<i>Hammond Island</i> Harbour works; dredging Light buoy withdrawn
84/2016	Aus839	<i>Kai-Maituine Reef</i> Wreck
410/2016	Aus841 842	<i>Talbot Islands to Deliverance Island</i> Obstructions
586/2017	Aus143	VICTORIA <i>Barwon Heads</i> Light buoy off station
41/2018 471/2018	Aus357 Aus357 487	<i>Bass Strait</i> Survey operations Restricted areas
1271/2015	Aus349	<i>Cape Reamur</i> Exclusion zone; light buoy
376/2018	Aus357	<i>Golden Beach</i> Scientific instruments
634/2017 261/2018	Aus182 Aus182	<i>Lakes Entrance</i> Dredging operations Shoaling
126/2018	Aus357 487	<i>Ninety Mile Beach</i> Traffic separation scheme southwestwards
43/2018	Aus181 182	<i>Port Albert</i> Shoaling
1165/2016 120/2017 130/2018 179/2018 225/2018 307/2018 341/2018 343/2018 379/2018 594/2018	Aus158 Aus154 Aus154 Aus153 157 Aus157 Aus143 Aus155 Aus158 Aus143 155 Aus143 158	<i>Port Phillip</i> Buoy off station Light beacon destroyed Harbour works Light buoys; AIS Light beacon destroyed Harbour works Light unlit Light buoy off station Light beacon unlit Light buoy off station
542/2018	Aus181 182	<i>Port Welshpool</i> Harbour works
180/2018	Aus140	<i>Portland Harbour</i> Dredging operations
45/2018	Aus181	<i>Shoal Inlet Entrance</i> Light destroyed

599(T)/2018 AUSTRALIA - TEMPORARY AND PRELIMINARY NOTICES

<i>Notice</i>	<i>Charts affected</i>	<i>Locality and Subject</i>
1053/2016	Aus150	<i>The Narrows</i> Shoaling
1052/2017	Aus143 788	<i>Torquay</i> Fish aggregating devices
764/2017	Aus150 151 152	<i>Western Port</i> Light beacons unlit
543/2018	Aus150	Harbour works
595/2018	Aus151	Beacon destroyed
WESTERN AUSTRALIA		
463/2018	Aus65 66	<i>Barrow Island</i> Survey operations
881/2017	Aus325 326 739	<i>Bedout Island</i> Scientific instruments northwestwards
418/2018	Aus326 739 4722	<i>Bedout Islet</i> Drill rig northwestwards
576/2017	Aus319 320	<i>Browse Island</i> Prelude FLNG commissioning
219/2018	Aus319 320 322 4721 4722	Subsea operations
420/2018	Aus319 320	Mooring buoy northwestwards
534/2018	Aus319 320 4721 4722	Drill rig northwestwards
371/2018	Aus115	<i>Bunbury</i> Dredging operations
988/2016	Aus73	<i>Carnarvon</i> Obstruction
578/2017	Aus73	Shoaling
271/2013	Aus57 741 742	<i>Dampier</i> Obstruction
216/2016	Aus58 59 60	Scientific instruments
777/2016	Aus57 58 60 741 742	Shoaling
305/2017	Aus59	Harbour works
851/2015	Aus57 327 741 742	<i>Dampier Archipelago</i> Obstruction eastwards
1078/2015	Aus318 319 727 728	<i>East Holothuria Reef</i> Shoaling
761/2017	Aus110	<i>Emu Point</i> Scientific instrument
372/2018	Aus744 745	<i>Exmouth</i> Mooring buoy
940/2016	Aus754 755	<i>Five Fathom Bank</i> Scientific instrument
476/2016	Aus116 335 336 756 757	<i>Flinders Bay</i> Shoaling
339/2017	Aus326 740	<i>Forestier Islands</i> Scientific instrument northwestwards
537/2018	Aus112 113 114 117 754	<i>Fremantle</i> Dredging operations

599(T)/2018 AUSTRALIA - TEMPORARY AND PRELIMINARY NOTICES

<i>Notice</i>	<i>Charts affected</i>	<i>Locality and Subject</i>
536/2017	Aus81	<i>Geraldton</i> Marine farm
1043/2016	Aus320 323 730 732	<i>Hall Point to Raft Point</i> Shoaling
37/2018	Aus83 332 751	<i>Houtman Abrolhos</i> Shoaling
522/2016	Aus328	<i>Montebello Islands</i> Light buoy northwestwards
302/2018	Aus328 329 744 745	<i>Muiron Islands</i> Pipeline operations; ship to ship transfer
424/2018	Aus328 329 744 4723 4725	FPSO off station northwestwards
538/2018	Aus328 329 744	Subsea operations northwestwards
122/2018	Aus328 329 4723 4725	<i>North West Cape</i> Drill rig northwestwards
478/2016	Aus754	<i>Perth</i> Scientific instruments westwards
1123/2015	Aus54	<i>Port Hedland</i> Light beacons; tug mooring
468/2018	Aus54	Dredging operations
586/2018	Aus52 53	Harbour works
1092/2016	Aus55 326 740	<i>Port Walcott</i> Tide gauge
338/2018	Aus55 56	Survey operations
480/2016	Aus327	<i>Rankin Bank</i> Scientific instrument
731/2016	Aus327 328	Scientific instruments southwestwards
630/2017	Aus327	Subsea operations
940/2017	Aus327	Mooring buoys
588/2018	Aus327 4723	Subsea operations
631/2017	Aus754	<i>Rottne Island</i> Scientific instrument
590/2018	Aus754	Subsea operations
763/2017	Aus324 325 4722	<i>Rowley Shoals</i> Scientific instruments
540/2018	Aus64 328 743 744	<i>Thevenard Island</i> Lights altered
592/2018	Aus112	<i>Trigg Island</i> Light buoy
171/2018	Aus32	<i>Wyndham</i> Shoaling
304/2018	Aus40 732 733	<i>Yampi Sound</i> Light beacon destroyed
INDIAN OCEAN		
454/2015	Aus4070 4071	<i>Sumatera</i> Scientific instruments westwards
PACIFIC OCEAN		
424/2015	Aus4604 4622	Scientific instruments
664/2017	Aus4623	Scientific instruments

599(T)/2018 AUSTRALIA - TEMPORARY AND PRELIMINARY NOTICES

<i>Notice</i>	<i>Charts affected</i>	<i>Locality and Subject</i>
		PAPUA NEW GUINEA
		<i>Batumata Point</i>
35/2018	Aus507 4620 4621	Survey operations southeastwards
412/2018	Aus506 507 623	Shoaling
		<i>Huon Gulf</i>
979/2016	Aus523 642 643	Survey operations
298/2017	Aus643	Light buoy off station
		<i>Lae</i>
531/2017	Aus642 643	Infrastructure; coastline
		<i>Lark Patch</i>
533/2018	Aus505 621	ALS inoperative
		<i>Madehas Island</i>
299/2017	Aus397 399 684 4060 4604 4622	Light unlit
		<i>Manubada Island to Padana Nahua Passage</i>
499/2018	Aus505 621	Shoaling
		<i>Nessup Island</i>
460/2018	Aus673	Light buoy off station
		<i>New Britain</i>
294/2018	Aus674 677	Light beacon destroyed
		<i>Nuakata Passage</i>
164/2013	Aus628	Light beacon destroyed
		<i>Padana Nahua Passage to Bootless Inlet</i>
226/2017	Aus505 621	Shoaling
		<i>Port Moresby</i>
144/2016	Aus622	Harbour works; horizontal datum error
		<i>Vabukori</i>
264/2017	Aus379 505 621	Light unlit
		SOLOMON ISLANDS
		<i>Florida Islands</i>
135/2018	Aus4623 4634 SLB201 304	Light unlit
		<i>Ghizo Island</i>
91/2018	SLB102 301 302	Shoaling
		<i>Honiara and Lungga Roads</i>
677/2017	SLB101	Shoaling
		<i>Indispensable Strait</i>
136/2018	SLB104 304	Light unlit
		<i>Lungga Point</i>
678/2017	SLB101 201	Light beacon unlit
		<i>Maana'oba Island to Mbita'ama Harbour</i>
679/2017	Aus4604 4623 4634 SLB304 305	Lights unlit
		<i>Marau Sound</i>
680/2017	SLB101	Light beacons unlit
		<i>Ndende Island</i>
681/2017	Aus4623 SLB107	Light unlit
		<i>Nega Point</i>
682/2017	SLB102 301 302	Light beacons unlit

599(T)/2018 AUSTRALIA - TEMPORARY AND PRELIMINARY NOTICES

<i>Notice</i>	<i>Charts affected</i>	<i>Locality and Subject</i>
184/2018	Aus4604 4623 4634 SLB302	<i>New Georgia Island</i> Lights unlit
683/2017	Aus4623 4634 SLB305	<i>San Christobal Island</i> Light unlit
684/2017	Aus4604 4621 4622 4623 4634 SLB301 302	<i>Vaghoe Point</i> Light unlit
296/2018	Aus312	TIMOR-LESTE <i>Sahul Banks</i> Drill rig

II

HYDROGRAPHIC REPORTS

NIL

III

NAVIGATION WARNINGS

The Australian Hydrographic Office will no longer compile Section III of the Australian Notices to Mariners. For the most up to date navigation warnings please refer to:

AMSA Navigation Warnings

<http://amsa.gov.au/search-and-rescue/distress-and-safety-comms/msi/msi-email/index.asp>

New Zealand Notices to Mariners (Navarea XIV warnings)

<http://www.linz.govt.nz/sea/maritime-safety/notices-mariners>

To accompany Australian Notice to Mariners 552/2018

TWO-WAY ROUTE

The Two-Way Route shown on this chart is a ships routing measure that has been adopted by the IMO.

The route keeps ships clear of charted hazards in proximity to its limits and assists in safe and efficient navigation.

In accordance with the International Convention for Safety of Life at Sea, 1974 ships are to maintain a continuous listening watch on VHF channel 16 when practicable. Additionally, ships should note the requirements for reporting to REEFVTS.

The International Regulations for Preventing Collisions at Sea, 1972 apply to all vessels whether navigating within or outside the Two-Way Route. Where safe and practicable, vessels are advised to keep to starboard of the routes centreline.

Note for chart Aus 255

To accompany Australian Notice to Mariners 553/2018

HISTORIC WRECK

The site of an historic wreck is protected from unauthorised interference. For details see Seafarers Handbook for Australian Waters AHP 20.

Note for chart Aus 256

Botany Bay, NSW (34° 00'S, 151° 13'E)	
UN/LOCODE: AU BTB	
Paper charts:	Aus 196, 197, 198
AusENC cells:	AU5198P0, AU434151, AU435151
Security Regulated Port:	Yes
Port Authority:	Port Authority of NSW
Website:	www.portauthoritynsw.com.au
Email:	enquiries@portauthoritynsw.com.au
Telephone:	+61 2 9296 4999
Sydney VTS	
Telephone:	+61 2 9296 4999
Email:	VTs@portauthoritynsw.com.au
Pilotage:	Compulsory
Pilot	
Telephone:	+61 2 9296 4999
Fax:	+61 2 9296 4744
Email:	pilotenquiries@portauthoritynsw.com.au
Ordering:	Through local agent
Pilot Boarding Ground:	34° 01.02'S, 151° 18.88'E
Communication:	"Sydney VTS"
Call up, emergencies:	VHF Ch 16
Sydney VTS:	VHF Ch 12
Pilot Boarding:	VHF Ch 06
Tugs:	VHF Ch 68, 69
Notice of ETA:	60 hours
For more information:	www.portauthoritynsw.com.au

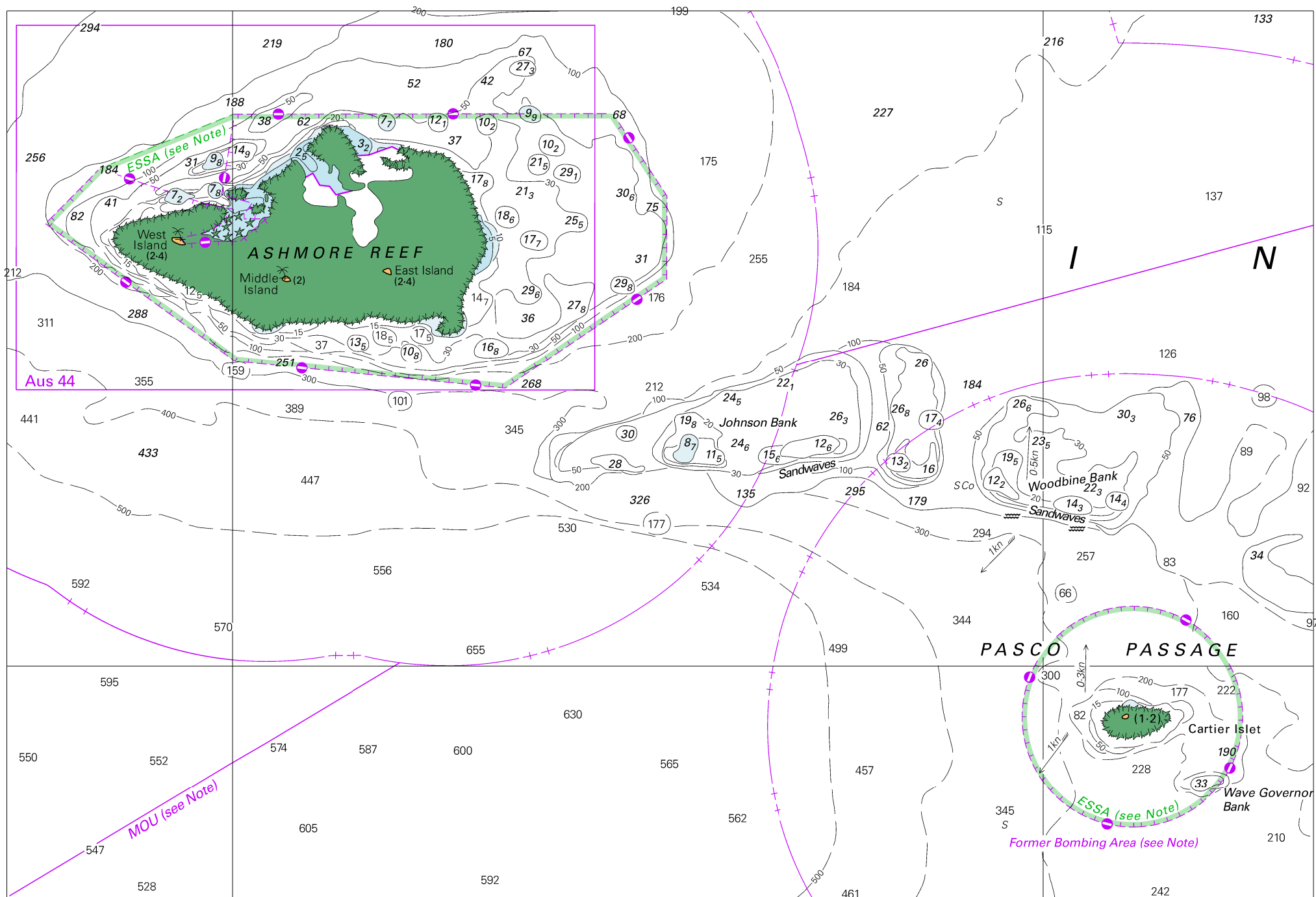
Page 242

Sydney (Port Jackson) , NSW (33° 51'S, 151° 12'E)	
UN/LOCODE: AU SYD	
Paper charts:	Aus 197, 200, 201, 202, 203
AusENC cells:	AU5200PE, AU5200PW, AU5809P2 AU434151
Security Regulated Port:	Yes
Port Authority:	Port Authority of NSW
Website:	www.portauthoritynsw.com.au
Email:	enquiries@portauthoritynsw.com.au
Telephone:	+61 2 9296 4999
Sydney VTS	
Telephone:	+61 2 9296 4999
Fax:	+61 2 9247 7804
Email:	VTs@portauthoritynsw.com.au
Pilotage:	Compulsory >30m LOA
Pilot	
Telephone:	+61 2 9296 4999
Fax:	+61 2 9296 4744
Email:	pilotenquiries@portauthoritynsw.com.au
Ordering:	Through Agent
Pilot Boarding Grounds:	34° 01.02'S, 151° 18.88'E 33° 50.05'S, 151° 21.68'E
Communication:	"Sydney VTS"
Call up, emergencies:	VHF Ch 16
VTS:	VHF Ch 13
Pilot Boarding:	VHF Ch 06
Tugs:	VHF Ch 08, 10, 72
Notice of ETA:	60 hours
For more information:	www.portauthoritynsw.com.au

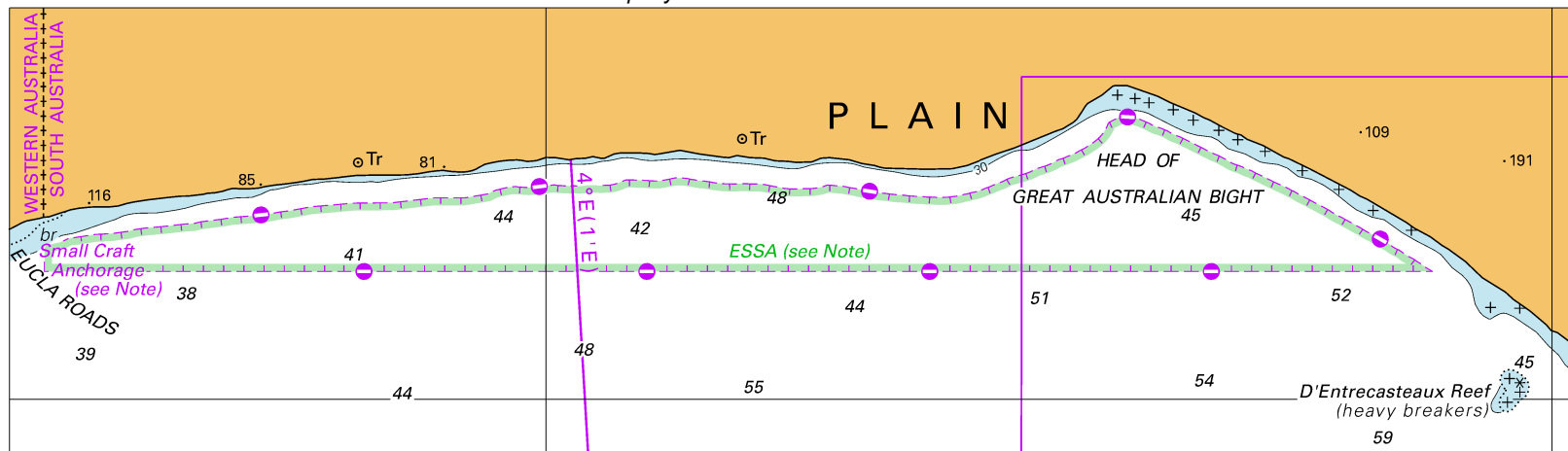
Page 243

© Commonwealth of Australia 2018
Block for Chart Aus 4074 (66.3 x 176.1mm)

(88.3 x 81.2mm)



To accompany Australian Notice to Mariners 566/2018

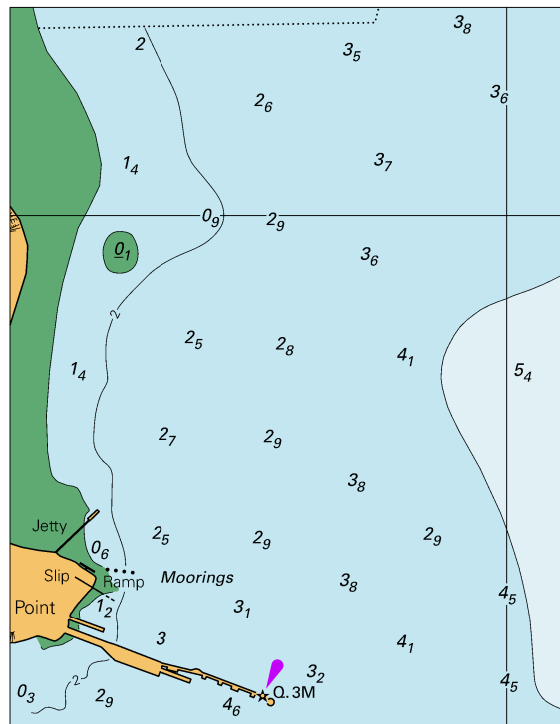


Block for Chart Aus 4727

© Commonwealth of Australia 2018

(213.0 x 60.7mm)

To accompany Australian Notice to Mariners 568/2018

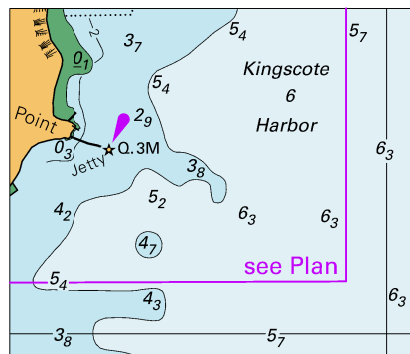


© Commonwealth of Australia 2018

Block A for Chart Aus 129

(73.9 x 95.3mm)

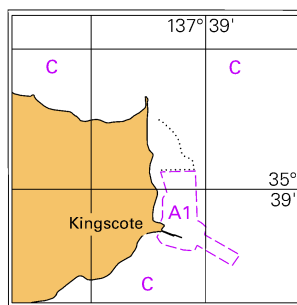
To accompany Australian Notice to Mariners 568/2018



© Commonwealth of Australia 2018

Block B for Chart Aus 129 (53.9 x 45.8mm)

To accompany Australian Notice to Mariners 568/2018



© Commonwealth of Australia 2018

Block C for Chart Aus 129 (38.1 x 37.9mm)