



AUSTRALIAN NOTICES TO MARINERS

Notices 600 - 660

**Including
List of Temporary and Preliminary Notices in force**

Published fortnightly by the Australian Hydrographic Office



Australian Notices to Mariners are the authority for correcting charts and publications published by the Australian Hydrographic Office covering Australia, Papua New Guinea, Solomon Islands, Australian Antarctic Territory and Timor-Leste.

Commodore F.T. FREEMAN RAN
Hydrographer of Australia

SECTIONS.

- I. **Australian Notices to Mariners, including blocks and notes.**
- II. **Hydrographic Reports.**
- III. **Navigational Warnings.**

SUPPLEMENTS.

- I. **Tracings**
- II. **Cumulative List of Australian Notices to Mariners.**
- III. **Cumulative List of Temporary and Preliminary Australian Notices to Mariners.**
- IV. **Temporary and Preliminary Notices in force.**
- V. **Amendments to Admiralty List of Lights and Fog Signals (Vol K),
Radio Signals (NP 281(2), 282, 283(2), 285, 286(4)) and Sailing
Directions (NP 9, 13, 14, 15, 33, 34, 35, 36, 39, 44, 51, 60, 61, 62, 100, 136).**

IMPORTANT NOTICE

This edition of Notices to Mariners includes all significant information affecting Australian Hydrographic Office (AHO) products which the AHO has become aware of since the last edition. All reasonable efforts have been made to ensure the accuracy and completeness of the information, including third party information, on which these updates are based. The AHO regards third parties from which it receives information as reliable, however the AHO cannot verify all such information and errors may therefore exist. The AHO does not accept liability for errors in third party information.

GENERAL INSTRUCTIONS

The substance of these notices should be inserted on the charts affected.

Bearings are referred to the true compass and are reckoned clockwise from North; those relating to lights are given as seen by an observer from seaward.

Positions quoted in notices relate to WGS84 which is the horizontal datum for all charts produced by the Australian Hydrographic Office.

The range quoted for a light is its nominal range.

Depths are with reference to the chart datum of each chart. Heights are above mean high water springs or mean higher high water, as appropriate.

The capital letter (P) or (T) after the number of any notice denotes a preliminary or temporary notice respectively, which are contained separately at the end of the permanent notices.

REPORTING OF DANGERS

Mariners are particularly requested to notify the AUSTRALIAN HYDROGRAPHIC OFFICE, Locked Bag 8801 Wollongong, NSW 2500 (Fax 02-4223 6599, e-mail datacentre@hydro.gov.au or, alternatively by filling in and submitting the [Hydrographic Notes](#) forms located on the web site – www.hydro.gov.au), immediately on the discovery of new dangers or suspected dangers to navigation. For changes or defects in aids to navigation notify AusSAR (Fax 02-6230 6868 or email rccaus@amsa.gov.au).

AUTHORISED USE

Copies of Australian notices are available free of charge from the AHO website (www.hydro.gov.au) and through the eNotices (email) service (www.hydro.gov.au/enotices/enotices.htm).

Individual Notices may be copied for the purpose of inserting Notice substance on official charts and publications. Paper copies may be printed by chart agents and distributed to customers on a cost recovery basis. Participating chart agents are listed on the AHO website as providing a 'Paper Notices to Mariners' service (www.hydro.gov.au/webapps/jsp/agents/agents-list.jsp). Copies of the notices may not be sold for profit without prior written agreement.

NUMERICAL INDEX OF NOTICES TO MARINERS

Edition No 15

Notices	Aus Chart, INT Chart, ENC Cell, AHP, BA Pubs
600	Products - New Charts and New Editions to be published shortly
601	Aus 17
602	Aus 4074, INT 74
603	Aus 202
604	Aus 303
605	Aus 238
606	Aus 247
607	Aus 230
608	Aus 230
609	Aus 240
610	Aus 240
611	Aus 247
612	Aus 235
613	Aus 236
614	Aus 256
615	Aus 13
616	Aus 759
617	Aus 331, 4725, INT 725
618	Aus 58, 59
619	Aus 52, 53, 54
620	Aus 32
621	Aus 322
622	Aus 317, 319
623	Aus 127
624	Aus 4727, INT 727
625	Aus 182
626	Aus 357
627	Aus 178
628	Aus 171
629(T)	Aus 237, 238
630(T)	Aus 238
631(T)	Aus 237
632(T)	Aus 238
633(T)	Aus 230
634(T)	Aus 252
635(T)	Aus 236
636(T)	Aus 236
637(T)	Aus 256, 827
638(T)	Aus 253, 269
639(T)	Aus 252, 253, 269, 824
640(T)	Aus 252, 253, 824
641(T)	Aus 256
642(T)	Aus 256, 257, 827
643(P)	Aus 4, 701
644(T)	Aus 252, 253
645(T)	Aus 24
646(T)	Aus 316, 318, 725, 726, 4721, INT 721
647(T)	Aus 24, 25, 26, 27, 28, 29, 309, 311, 312, 315, 316, 722, 4721, INT 721
648(T)	Aus 312
649(T)	Aus 326, 739, 4722, INT 722
650(T)	Aus 328, 329, 4723, 4725, INT 723, 725
651(T)	Aus 328, 329, 4723, 4725, INT 723, 725
652(T)	Aus 64, 328, 743, 744
653(T)	Aus 130, 137, 138
654(T)	Aus 357, 4644, INT 644
655(T)	Aus 143, 157
656(T)	Aus 154
657(T)	Aus 144
658(T)	Aus 173
659(T)	Aus 173, 795
660(T)	TEMPORARY AND PRELIMINARY NOTICES

NUMERICAL INDEX OF CHARTS AFFECTED

Edition No 15

Aus Chart	Notices
Aus 4	643(P)
Aus 13	615
Aus 17	601
Aus 24	645(T), 647(T)
Aus 25	647(T)
Aus 26	647(T)
Aus 27	647(T)
Aus 28	647(T)
Aus 29	647(T)
Aus 32	620
Aus 52	619
Aus 53	619
Aus 54	619
Aus 58	618
Aus 59	618
Aus 64	652(T)
Aus 127	623
Aus 130	653(T)
Aus 137	653(T)
Aus 138	653(T)
Aus 143	655(T)
Aus 144	657(T)
Aus 154	656(T)
Aus 157	655(T)
Aus 171	628
Aus 173	658(T), 659(T)
Aus 178	627
Aus 182	625
Aus 202	603
Aus 230	607, 608, 633(T)
Aus 235	612
Aus 236	613, 635(T), 636(T)
Aus 237	629(T), 631(T)
Aus 238	605, 629(T), 630(T), 632(T)
Aus 240	609, 610
Aus 247	606, 611
Aus 252	634(T), 639(T), 640(T), 644(T)
Aus 253	638(T), 639(T), 640(T), 644(T)
Aus 256	614, 637(T), 641(T), 642(T)
Aus 257	642(T)
Aus 269	638(T), 639(T)
Aus 303	604
Aus 309	647(T)
Aus 311	647(T)
Aus 312	647(T), 648(T)
Aus 315	647(T)
Aus 316	646(T), 647(T)
Aus 317	622
Aus 318	646(T)
Aus 319	622
Aus 322	621
Aus 326	649(T)
Aus 328	650(T), 651(T), 652(T)
Aus 329	650(T), 651(T)

Aus Chart	Notices
Aus 331	617
Aus 357	626, 654(T)
Aus 701	643(P)
Aus 722	647(T)
Aus 725	646(T)
Aus 726	646(T)
Aus 739	649(T)
Aus 743	652(T)
Aus 744	652(T)
Aus 759	616
Aus 795	659(T)
Aus 824	639(T), 640(T)
Aus 827	637(T), 642(T)
Aus 4074	602
Aus 4644	654(T)
Aus 4721	646(T), 647(T)
Aus 4722	649(T)
Aus 4723	650(T), 651(T)
Aus 4725	617, 650(T), 651(T)
Aus 4727	624

INT Chart	Notices
INT 74	602
INT 644	654(T)
INT 721	646(T), 647(T)
INT 722	649(T)
INT 723	650(T), 651(T)
INT 725	617, 650(T), 651(T)
INT 727	624

600 AUSTRALIA - Products - New Charts and New Editions to be published shortly

Australian Hydrographic Office

New Charts to be published shortly

<i>Chart</i>	<i>Title</i>	<i>Scale</i>	<i>Expected Publication Date</i>	<i>Remarks</i>
NIL				

New Editions to be published shortly

<i>Chart</i>	<i>Title</i>	<i>Scale</i>	<i>Expected Publication Date</i>	<i>Remarks</i>
AUS 729	Cape Voltaire to Lamarck Island	1:150 000	10 August 2018	New Edition to incorporate latest bathymetric data.
AUS 730	Lamarck Island to Degerando Island	1:150 000	10 August 2018	New Edition to incorporate latest bathymetric data.
AUS 132	Approaches to Port Augusta Plan:	1:37 500	10 August 2018	New Edition to incorporate latest bathymetric data.
	Port Augusta Wharves	1:7 500		
	Snapper Reach to Port Augusta	1:20 000		
AUS 194	Port Kembla including Wollongong Harbour	1:6 000	10 August 2018	New Edition to incorporate latest bathymetric data.
	Inset:			
	Wollongong Harbour	1:7 500		
AUS 221	Solitary Islands	1:50 000	10 August 2018	New Edition to incorporate latest bathymetric data.
AUS 201	Port Jackson (Eastern Sheet)	1:7 500	10 August 2018	New Edition to incorporate latest bathymetric data.
AUS 15	Plans in the Northern Territory		10 August 2018	New Edition to incorporate latest bathymetric data.
	Plans:			
	Cadell Strait	1:75 000		
	Cumberland Strait	1:25 000		
	Jensen Bay	1:37 500		
	Gove Harbour	1:37 500		
	Gove Inner Harbour	1:12 500		
	Gugari Rip	1:10 000		

601 AUSTRALIA - Products - New Charts, New Editions, Withdrawn Charts

Australian Hydrographic Office

New Charts

Chart	Title and Geographical limits	Scale	Publication Date	Remarks
NIL				

New Electronic Navigation Chart (Aus ENC)

Cell Name	Title	Publication Date	Remarks
NIL			

New Editions and Withdrawn Charts

Chart	Title	Scale	Publication Date	Remarks
AUS 17 Edition 3	Australia - North Coast - Northern Territory - Approaches to Maningrida	1:50 000	27 July 2018	New Edition to incorporate latest bathymetric data. Chart Aus 17 Edition 2 dated 2 December 2011 is now superseded and must be withdrawn from use.

Chart permanently withdrawn

Charts listed above as withdrawn no longer meet chart carriage requirements and should be marked as "superseded" and replaced with the new chart/ new edition listed prior to passage through the area covered by the new chart.

When placing orders with a chart agent between notice of forthcoming edition and its publication, mariners should advise whether their order pertains to the current edition or the new edition.

For further details refer to the AHS website at www.hydro.gov.au for new edition and new chart stock arrival information.

602 AUSTRALIA - TASMAN SEA - Macquarie Island - Marine parks

Australian Hydrographic Office

Aus 4074 (INT 74) [550/2018]

Insert	accompanying block	54° 47'.05 S	158° 35'.00 E
	accompanying Note	69° 51'.024 S	132° 08'.606 E

603 AUSTRALIA - NEW SOUTH WALES - Port Jackson - Shell Cove - Depths

Port Authority of New South Wales

Aus 202 [312/2018]

Insert	depth, 1 ₅ m	33° 50'.599 S	151° 13'.480 E
	depth, 1 ₁ m, enclosed by contour	33° 50'.800 S	151° 13'.498 E
	depth, 9 ₃ m, enclosed by contour	33° 50'.746 S	151° 13'.570 E
	depth, 9 ₈ m, and extend contour S to enclose	33° 50'.664 S	151° 13'.553 E
	contour, between	33° 50'.571 S	151° 13'.481 E
		33° 50'.599 S	151° 13'.485 E
		33° 50'.640 S	151° 13'.482 E
Delete	depth, 10 ₇ m	33° 50'.67 S	151° 13'.55 E

604 AUSTRALIA - QUEENSLAND - Albert River - Nav aids

Australian Hydrographic Office

Aus 303 [455/2011]

Amend	light to Fl.6s 10M	17° 34'.5 S	139° 46'.0 E
Delete	legend, Bns, centred on	17° 34'.3 S	139° 44'.1 E

605 AUSTRALIA - QUEENSLAND - Brisbane River - Quarries Reach - Light characteristics

Maritime Safety Queensland Notice 267/2018

Aus 238 [511/2018]

Amend	light to <i>Q.Bu (F.Day)</i>	27° 26'.59 S	153° 06'.65 E
	light to <i>Q.G (F.Day)</i>	27° 26'.56 S	153° 06'.70 E

606 AUSTRALIA - QUEENSLAND - Cawarral Creek - Depths

Maritime Safety Queensland

Aus 247 [278/2018]

Insert	depth, <i>0₃m</i> , and extend contour E to enclose	23° 19'.79 S	150° 49'.32 E
Delete	depth, <i>2₉m</i>	23° 19'.8 S	150° 49'.3 E

607 AUSTRALIA - QUEENSLAND - Gold Coast Seaway - Nav aids

Maritime Safety Queensland

Aus 230 [555/2018]

Move	light buoy to light beacon to	27° 56'.181 S 27° 56'.174 S 27° 56'.444 S 27° 56'.448 S	153° 25'.324 E 153° 25'.351 E 153° 24'.665 E 153° 24'.679 E
Delete	structure colour, Y structure colour, Y	27° 57'.05 S 27° 56'.44 S	153° 25'.41 E 153° 24'.63 E

608 AUSTRALIA - QUEENSLAND - Gold Coast Seaway - Depths

Maritime Safety Queensland

Aus 230 [607/2018]

Insert	depth, <i>-0₁m</i> , enclosed by contour	27° 56'.440 S	153° 24'.776 E
	depth, <i>1₆m</i> , and extend contour E to enclose	27° 56'.422 S	153° 25'.135 E
	depth, <i>2m</i> , enclosed by contour	27° 54'.170 S	153° 24'.460 E
	depth, <i>1₇m</i> , and extend contour E to enclose	27° 54'.928 S	153° 24'.748 E
Delete	depth, <i>4₃m</i>	27° 54'.92 S	153° 24'.76 E

609 AUSTRALIA - QUEENSLAND - Great Sandy Strait - Carlo Creek - Light beacon

Maritime Safety Queensland

Aus 240 [432/2018]

Move	light beacon to	25° 53'.61 S 25° 53'.60 S	153° 02'.47 E 153° 02'.43 E
------	--------------------	------------------------------	--------------------------------

**610 AUSTRALIA - QUEENSLAND - Great Sandy Strait - Tin Can Inlet - Snapper Creek - Beacon removed;
Light buoy**

Maritime Safety Queensland

Aus 240 [609/2018]

Replace	light beacon with starboard lateral conical light buoy, <i>Fl.G.3s</i> , without topmark	25° 54'.3 S	153° 00'.4 E
Delete	Beacon	25° 54'.4 S	153° 00'.3 E

611 AUSTRALIA - QUEENSLAND - Keppel Sands - Cawarral Creek - Beacon

Maritime Safety Queensland

Aus 247 [606/2018]

Insert	port lateral beacon	23° 19'.27 S	150° 47'.52 E
--------	---------------------	--------------	---------------

612 AUSTRALIA - QUEENSLAND - Mooloolaba - Infrastructure
Maritime Safety Queensland

Aus 235 (Mooloolaba Harbour) [1070/2017]

Insert	accompanying block	26° 40'.8 S	153° 08'.1 E
--------	--------------------	-------------	--------------

613 AUSTRALIA - QUEENSLAND - Moreton Bay - Rainbow Channel - Nav aids
Maritime Safety Queensland

Aus 236 [553/2018]

Replace	light beacon with, starboard lateral light buoy, <i>Fl.G.2·5s</i> , without topmark	27° 25'.1 S	153° 25'.0 E
---------	---	-------------	--------------

614 AUSTRALIA - QUEENSLAND - Townsville - Sea Channel - Light beacon altered
Maritime Safety Queensland

Aus 256 [553/2018]

Insert	port lateral light beacon, <i>Fl.R.4·3s S12</i> , with topmark	19° 11'.25 S	146° 52'.21 E
--------	--	--------------	---------------

Delete	light beacon	19° 11'.2 S	146° 52'.2 E
--------	--------------	-------------	--------------

615 AUSTRALIA - NORTHERN TERRITORY - Bing Bong - Depths
Glencore

Aus 13 (Bing Bong) [317/2018]

Insert	accompanying block A	15° 37'.2 S	136° 23'.5 E
	accompanying block B	15° 36'.0 S	136° 23'.8 E

616 AUSTRALIA - WESTERN AUSTRALIA - Albany - Torbay - Light buoy
Department of Transport WA Notice 99/2018, University of Western Australia

Aus 759 [560/2018]

Move	light buoy	35° 27'.71 S	117° 43'.81 E
	to	35° 27'.78 S	117° 44'.27 E

617 AUSTRALIA - WESTERN AUSTRALIA - Carnarvon - Nav aids
Department of Transport WA

Aus 331 [561/2018]

Replace	light with, radio mast with light, <i>R Lt (98)</i>	24° 54'.4 S	113° 43'.2 E
---------	---	-------------	--------------

Amend	light description to <i>Aero Fl.R.3s 10M & Aero Q.22M (Day)</i>	24° 52'.4 S	113° 40'.3 E
-------	---	-------------	--------------

Aus 4725 (INT 725) [NE 13/7/2018]

Amend	light description to <i>Aero Fl.R.3s 10M & Aero Q.22M (Day)</i>	24° 52'.4 S	113° 40'.3 E
-------	---	-------------	--------------

618 AUSTRALIA - WESTERN AUSTRALIA - Dampier - King Bay - Nomenclature
Toll Group Global Logistics

Aus 58 [395/2018]

Amend	legend to <i>Toll Dampier Supply Base</i>	20° 37'.86 S	116° 45'.20 E
-------	---	--------------	---------------

Aus 59 [780/2017]

Amend	legend to <i>Toll Dampier Supply Base</i>	20° 37'.86 S	116° 45'.20 E
-------	---	--------------	---------------

619 AUSTRALIA - WESTERN AUSTRALIA - Port Hedland - Nav aids

Pilbara Ports Authority

Aus 52 [564/2018]Amend light to *F.33m 25M* 20° 18'.56 S 118° 36'.01 E

Delete light beacon 20° 17'.74 S 118° 35'.62 E

Aus 53 [564/2018]Amend light to *F.33m 25M* 20° 18'.6 S 118° 36'.0 E

Delete light beacon 20° 17'.7 S 118° 35'.6 E

Aus 54 [445/2018]Amend light to *F.33m 25M* 20° 18'.56 S 118° 36'.01 E

Delete light beacon 20° 17'.74 S 118° 35'.62 E

620 AUSTRALIA - WESTERN AUSTRALIA - Port of Wyndham - Hare Channel - Nav aids

Department of Transport WA

Aus 32 (Approaches to Wyndham Wharf) [352/2018]Replace beacon with, special light beacon, *Oc.3s 6m 8M*, without topmark 15° 24'.99 S 128° 07'.14 Ebeacon with, special light beacon, *Oc.10s 20m 10M*, without topmark 15° 26'.10 S 128° 07'.63 EAmend light to *Fl.R.3s* 15° 17'.90 S 128° 05'.06 E**621 AUSTRALIA - WESTERN AUSTRALIA - Scott Reef - Well southwestwards**

Woodside Energy Ltd

Aus 322 [563/2018]Move depth, *496m*, enclosed by danger circle with legend *Well* 14° 36'.47 S 121° 34'.74 E
to 14° 34'.47 S 121° 34'.74 E**622 INDIAN OCEAN - Ashmore Reef - Marine parks**

Australian Hydrographic Office

Aus 317 [615/2015]

Insert accompanying block 12° 09'.18 S 123° 04'.85 E

Aus 319 [441/2018]

Insert accompanying block 12° 23'.38 S 123° 16'.80 E

623 AUSTRALIA - SOUTH AUSTRALIA - Encounter Bay - Rosetta Harbor - Historic wreck; chart note

Department for Environment and Water SA

Aus 127 (King Head to Port Elliot) [1022/2017]Insert historic wreck with magenta legend, *Historic Wk with Protected Zone* 35° 34'.64 S 138° 36'.21 E
(see Note), centred on**Aus 127 (Port Caroline to Robe) [1022/2017]**

Insert accompanying note in N border 36° 46'.08 S 139° 45'.71 E

624 AUSTRALIA - SOUTH AUSTRALIA - Great Australian Bight - Chart Note

Australian Hydrographic Office

Aus 4727 (INT 727) [566/2018]

Insert accompanying Note 32° 44'.67 S 123° 13'.37 E

625 AUSTRALIA - VICTORIA - Port Welshpool - Depths

Australian Hydrographic Office

Aus 182 (Lewis Channel) [569/2018]

Insert accompanying block A

38° 42'.201 S 146° 27'.425 E

Aus 182 (Port Welshpool) [569/2018]

Insert accompanying block B

38° 42'.307 S 146° 27'.449 E

626 AUSTRALIA - VICTORIA - Snowy River to Point Hicks - Nav aids

Australian Hydrographic Office

Aus 357 [569/2018]Insert light, *Fl.6s 4M*

37° 47'.84 S 148° 32'.06 E

Amend light to *Fl.8s 10M*

37° 48'.8 S 148° 43'.7 E

Delete light

37° 48'.0 S 148° 32'.1 E

627 AUSTRALIA - TASMANIA - Sawyer Bay - Stanley Harbour - Mooring buoy

Maritime and Safety Tasmania

Aus 178 (Stanley Harbour) [107/2017]

Insert mooring buoy

40° 46'.350 S 145° 18'.079 E

628 AUSTRALIA - TASMANIA - Sloping Island - Light height

Australian Hydrographic Office

Aus 171 [907/2017]Amend light to *Q(2) 10s 10m 10M*

42° 56'.6 S 147° 38'.5 E

629(T)/2018 AUSTRALIA - QUEENSLAND - Brisbane - Lytton and Quarantine Reach - Harbour works complete*Former Notice - 747(T)/2017 is cancelled*

Maritime Safety Queensland Notice 249/2018

Cancel this notice on receipt.

Chart formerly affected - Aus 237 - Aus 238**630(T)/2018 AUSTRALIA - QUEENSLAND - Brisbane River - Petrie Bight - Harbour works***Former Notice - 358(T)/2018 is cancelled*

Maritime Safety Queensland Notice 258(T)/2018

Works are in progress in the vicinity of position 27° 27'.76 S 153° 02'.14 E.

The barge *Casa P190* is on site and has deployed anchors marked by buoys, which indicate a safe clearance depth of at least 5m.

Mariners are advised to navigate with caution in the area.

Chart temporarily affected - Aus 238**631(T)/2018 AUSTRALIA - QUEENSLAND - Brisbane River - Luggage Point - Dredging operations complete***Former Notice - 1088(T)/2017 is cancelled*

Maritime Safety Queensland

Cancel this notice on receipt.

Chart formerly affected - Aus 237**632(T)/2018 AUSTRALIA - QUEENSLAND - Brisbane River - Hamilton Reach - Harbour works complete***Former Notice - 1181(T)/2016 is cancelled*

Maritime Safety Queensland Notice 271/2018

Cancel this notice on receipt.

Chart formerly affected - Aus 238**633(T)/2018 AUSTRALIA - QUEENSLAND - Gold Coast Seaway - Broadwater - Light buoy**

Maritime Safety Queensland Notice 257(T)/2018

A port lateral cylindrical light buoy, *Fl.R.2.5s* exists in approximate position 27° 56'.46 S 153° 25'.01 E.**Chart temporarily affected - Aus 230****634(T)/2018 AUSTRALIA - QUEENSLAND - Hook Island - Nara Inlet - Light beacon restored***Former Notice - 419(T)/2017 is cancelled*

Maritime Safety Queensland

Cancel this notice on receipt.

Chart formerly affected - Aus 252

635(T)/2018 AUSTRALIA - QUEENSLAND - Manly Boat Harbour - Dredging operations

Maritime Safety Queensland Notice 265(T)/2018

The dredge *Ken Harvey* and support vessel *Frank Wilson* are conducting dredging operations in the vicinity of 27° 27'.20 S 153° 12'.87 E.

Two lit orange mooring buoys exist in positions 27° 27'.20 S 153° 12'.87 E and 27° 27'.25 S 153° 12'.99 E.

All vessels will display appropriate lights and shapes and monitor VHF Ch 13.

The dredge will be moored in the channel and vessels transiting the channel will be required to contact the dredger on VHF Ch 13 or mobile 0436 654 920 to request side mooring wires be lowered.

Mariners are advised to navigate with caution in the area.

Chart temporarily affected - Aus 236

636(T)/2018 AUSTRALIA - QUEENSLAND - Moreton Bay - Main Channel - Light beacon destroyed

Maritime Safety Queensland Notice 264(T)/2018, 261(T)/2018

The light beacon *Fl.G.2-5s* (27° 05'.58 S 153° 18'.40 E), has been destroyed; a starboard lateral light buoy, *Fl.G.2-5s* exists in situ.

Chart temporarily affected - Aus 236

637(T)/2018 AUSTRALIA - QUEENSLAND - Rattlesnake Island - Military exercise

Maritime Safety Queensland Notice 263(T)/2018

Live firing activities will be conducted within a 5M radius of position 19° 02'.45 S 146° 36'.72 E from 23 July to 3rd August 2018.

Mariners are advised to navigate with caution in the area.

Chart temporarily affected - Aus 256 - Aus 827

638(T)/2018 AUSTRALIA - QUEENSLAND - Shute Harbour - Light beacons destroyed

Former Notice - 497(T)/2018 is cancelled

Maritime Safety Queensland

The east cardinal light beacon, *Q(3)10s* (20° 17'.25 S 148° 48'.14 E), has been destroyed; east cardinal light buoy, *Q(3)10s*, exists in situ.

Chart temporarily affected - Aus 253 - Aus 269

639(T)/2018 AUSTRALIA - QUEENSLAND - Shute Harbour - Drilling operations

Maritime Safety Queensland Notice 250(T)/2018

The vessel *Little Yellow Barge* is conducting geotechnical drilling operations in the area of the old Ferry Terminal in Shute Harbour (20° 17'.50 S 148° 47'.27 E).

Vessel will display appropriate shapes and colours.

Mariners are advised to navigate with caution in the area and create no wash.

Chart temporarily affected - Aus 252 - Aus 253 - Aus 269 - Aus 824

640(T)/2018 AUSTRALIA - QUEENSLAND - Surprise Rock - Light buoy restored

Former Notice - 292(T)/2018 is cancelled

Maritime Safety Queensland

Cancel this notice on receipt.

Chart formerly affected - Aus 252 - Aus 253 - Aus 824

641(T)/2018 AUSTRALIA - QUEENSLAND - Townsville - Sea Channel - Light beacon restored*Former Notice - 427(T)/2017 is cancelled*

Maritime Safety Queensland

Cancel this notice on receipt.

Chart formerly affected - Aus 256**642(T)/2018 AUSTRALIA - QUEENSLAND - Townsville - Dredging operations**

Maritime Safety Queensland Notice 270(T)/2018

The dredge *Brisbane* is conducting dredging operations in the Port of Townsville, the Sea Channel and Platypus Channel in an area bounded by the following positions:

19°16'.97 S 146°48'.78 E
 19°16'.91 S 146°51'.52 E
 19°14'.03 S 146°51'.65 E
 19°08'.06 S 146°54'.45 E
 19°07'.68 S 146°53'.20 E
 19°14'.28 S 146°48'.88 E.

The dredge will monitor VHF Ch 12 and Ch 16.

Mariners are advised to navigate with caution in the area.

Chart temporarily affected - Aus 256 - Aus 257 - Aus 827**643(P)/2018 AUSTRALIA - QUEENSLAND - Weipa - Shoaling**

Maritime Safety Queensland

Latest survey shows shoaler depths than those charted may exist in an area bounded by the following positions:

12° 40'.92 S 141° 41'.16 E
 12° 40'.92 S 141° 37'.76 E
 12° 38'.23 S 141° 37'.76 E
 12° 38'.23 S 141° 41'.16 E.

Mariners are advised to navigate with caution in the area.

Charts will be updated in due course.

Chart which will be affected - Aus 4 - Aus 701**644(T)/2018 AUSTRALIA - QUEENSLAND - Whitsunday Island - Cid Harbour - Subsea operations complete***Former Notice - 582(T)/2018 is cancelled*

Maritime Safety Queensland

Cancel this notice on receipt.

Chart formerly affected - Aus 252 - Aus 253**645(T)/2018 AUSTRALIA - NORTHERN TERRITORY - Darwin - Cullen Bay - Dredging operations complete***Former Notice - 991(T)/2017 is cancelled*

Department of Infrastructure, Planning and Logistics NT

Cancel this notice on receipt.

Chart formerly affected - Aus 24

646(T)/2018 AUSTRALIA - TIMOR SEA - Bathurst Island - Seismic survey northwards

Department of Defence

MV *Polarcus Naila*, and support vessels *Mermaid Vantage* and *Empress* are conducting a seismic survey in an area bounded by the following positions:

13° 22'.22 S 128° 59'.36 E
 13° 22'.22 S 128° 45'.69 E
 14° 02'.72 S 128° 13'.92 E
 14° 08'.31 S 128° 13'.80 E
 14° 08'.22 S 128° 21'.03 E
 14° 14'.05 S 128° 28'.25 E
 14° 13'.73 S 128° 34'.08 E
 14° 15'.53 S 128° 38'.51 E
 14° 02'.27 S 128° 53'.96 E
 13° 44'.04 S 128° 54'.08 E
 13° 44'.14 S 128° 59'.36 E.

Vessels will display appropriate lights and shapes.

Mariners are advised to navigate with caution in the area. 7M clearance requested.

Chart temporarily affected - Aus 316 - Aus 318 - Aus 725 - Aus 726 - Aus 4721 (INT 721)

647(T)/2018 AUSTRALIA - TIMOR SEA - NORTHERN TERRITORY - Sahul Banks to Darwin - Pipeline operations complete

Former Notice - 620(T)/2017 is cancelled

J Ellis

Cancel this notice on receipt.

Chart formerly affected - Aus 24 - Aus 25 - Aus 26 - Aus 27 - Aus 28 - Aus 29 - Aus 309 - Aus 311 - Aus 312 - Aus 315 - Aus 316 - Aus 722 - Aus 4721 (INT 721)

648(T)/2018 TIMOR-LESTE - Sahul Banks - Drill rig

Former Notice - 296(T)/2018 is cancelled

Australian Maritime Safety Authority

Cancel this notice on receipt.

Chart formerly affected - Aus 312

649(T)/2018 AUSTRALIA - WESTERN AUSTRALIA - Bedout Islet - Drill rig northwestwards

Former Notice - 418(T)/2018 is cancelled

Australian Maritime Safety Authority

Cancel this notice on receipt.

Chart formerly affected - Aus 326 - Aus 739 - Aus 4722 (INT 722)

650(T)/2018 AUSTRALIA - WESTERN AUSTRALIA - North West Cape - Drill rig northwestwards

MODU ENSCO DPS-1

Drill rig *Ensco DPS-1* is conducting drilling operations in position 21° 31'.38 S 113° 50'.67 E.

Chart temporarily affected - Aus 328 - Aus 329 - Aus 4723 (INT 723) - Aus 4725 (INT 725)

651(T)/2018 AUSTRALIA - WESTERN AUSTRALIA - North West Cape - Drill rig moved

Former Notice - 122(T)/2018 is cancelled

MODU ENSCO DPS-1

Cancel this notice on receipt.

Chart formerly affected - Aus 328 - Aus 329 - Aus 4723 (INT 723) - Aus 4725 (INT 725)

652(T)/2018 AUSTRALIA - WESTERN AUSTRALIA - Thevenard Island - Lights restored*Former Notice - 540(T)/2018 is cancelled*

Chevron Australia Pty Ltd

Cancel this notice on receipt.

Chart formerly affected - Aus 64 - Aus 328 - Aus 743 - Aus 744**653(T)/2018 AUSTRALIA - SOUTH AUSTRALIA - Gulf of St Vincent - Scientific instruments**

Department of Planning, Transport and Infrastructure SA Notice 15/2018

Special light buoys, *Fl. Y. 3s*, exist in the following positions:

34° 46'.65 S 138° 27'.55 E

34° 47'.99 S 138° 28'.40 E

34° 54'.05 S 138° 28'.86 E .

Chart temporarily affected - Aus 130 - Aus 137 - Aus 138**654(T)/2018 AUSTRALIA - VICTORIA - Point Hicks - Drill rig southwestwards***Former Notice - 377(T)/2018 is cancelled*

Australian Maritime Safety Authority

Cancel this notice on receipt.

Chart formerly affected - Aus 357 - Aus 4644 (INT 644)**655(T)/2018 AUSTRALIA - VICTORIA - Port Phillip - Curlewis Bay - Exclusion Zone**

Parks Victoria Notice 225(T)/2018

An exclusion zone associated with low flying aircraft operations exists in an area bounded by the following positions:

38° 09'.21 S 144° 30'.11 E

38° 09'.21 S 144° 28'.73 E

38° 08'.13 S 144° 28'.73 E

38° 08'.13 S 144° 30'.11 E

The scooping area is marked with a series of orange buoys and support vessels will display appropriate shapes and colours.

Chart temporarily affected - Aus 143 - Aus 157**656(T)/2018 AUSTRALIA - VICTORIA - Port Phillip - Station Pier - Harbour works**

Victorian Ports Corporation (Melbourne) Notice 228(T)/2018

Works associated with the refurbishment of the pier (37° 50'.70 S 144° 55'.85 E) are in progress.

Vessels will display appropriate lights and shapes and monitor VHF Ch 12.

Mariners are advised to navigate with caution in the area.

Chart temporarily affected - Aus 154**657(T)/2018 AUSTRALIA - VICTORIA - Port Phillip - Point Nepean - Light buoy off station**

Parks Victoria Notice 227(T)/2018

The special conical light buoy, *Fl. Y. 5s* (38° 17'.94 S 144° 39'.13 E), is off station.**Chart temporarily affected - Aus 144****658(T)/2018 AUSTRALIA - TASMANIA - D'Entrecasteaux Channel - Lippies Point - Marine farm***Former Notice - 848(T)/2017 is cancelled*

Marine and Safety Tasmania

Cancel this notice on receipt.

Chart formerly affected - Aus 173

659(T)/2018 AUSTRALIA - TASMANIA - D'entrecasteaux Channel - Alonnah - Light relit

Former Notice - 596(T)/2018 is cancelled

Marine and Safety Tasmania Notice 125/2018

Cancel this notice on receipt.

Chart formerly affected - Aus 173 - Aus 795

660(T)/2018 AUSTRALIA - TEMPORARY AND PRELIMINARY NOTICES

Former Notice - 599(T)/2018 is cancelled
Australian Hydrographic Office

<i>Notice</i>	<i>Charts affected</i>	<i>Locality and Subject</i>
		BASS STRAIT
		<i>King Island</i>
89/2018	Aus789	Scientific instrument
434/2014	Aus357 4644	Light unlit
		CORAL SEA
		<i>Bampton Reef</i>
639/2015	Aus4604	Light buoy off station northwards
		<i>Diamond Islets</i>
225/2017	Aus614 4620 4621	Shoaling
		<i>Portlock Reefs</i>
989/2017	Aus377	Reefs
		NEW SOUTH WALES
		<i>Batemans Bay</i>
965/2016	Aus191	Dredging operations
		<i>Ben Buckler</i>
909/2017	Aus197 200 808	Scientific instruments southeastwards
		<i>Callo Point</i>
573/2018	Aus806	Exclusion zone
		<i>Cape Byron</i>
709/2016	Aus813	Obstructions eastwards
		<i>Clarence River</i>
43/2015	Aus222	Obstructions
213/2017	Aus222 812 813	Harbour works
		<i>Jervis Bay</i>
515/2017	Aus193	Light unlit
71/2018	Aus193	Beacon destroyed
210/2018	Aus193	Light buoy
574/2018	Aus193	Light buoys
		<i>Kiama</i>
1029/2017	Aus191 489 808 4643	Light range reduced
		NEW ZEALAND - NOUVELLE CALEDONIE - Fiji Islands
831/2017	Aus197 198 489 609 808 4060 4601 4602 4604 4643	Cable operations
		<i>Newcastle</i>
575/2018	Aus489 809 810 4643	Live firing
		<i>Newcastle to Cape Hawke</i>
490/2018	Aus207 209 219 489 809 810 4643	Obstructions
		<i>Port Jackson</i>
65/2017	Aus200 202	Harbour works
706/2017	Aus200 202	Scientific instruments
323/2018	Aus200 202	Harbour works; exclusion zone
400/2018	Aus200 203	Shoaling
		<i>Port Kembla</i>
400/2016	Aus194	Exclusion zone

660(T)/2018 AUSTRALIA - TEMPORARY AND PRELIMINARY NOTICES

<i>Notice</i>	<i>Charts affected</i>	<i>Locality and Subject</i>
966/2016	Aus192	<i>Twofold Bay</i> Berth damaged
1035/2016	Aus192	Scientific instruments
559/2017	Aus192	Scientific instruments
491/2018	Aus191 807 4643	<i>Ulladulla</i> Light altered
NORTHERN TERRITORY		
413/2018	Aus23 722	<i>Apsley Strait</i> Light buoy off station
414/2018	Aus22 309 310 722	<i>Bathurst Island</i> Survey and drilling operations
182/2017	Aus25	<i>Darwin</i> Light buoy unlit
119/2018	Aus24	Lights unlit
416/2018	Aus26 28	Light unlit
894/2015	Aus28	<i>East Arm</i> Lights
1193/2014	Aus20	<i>East Vernon Island</i> Obstruction
461/2018	Aus29 309 316 722 4721	<i>Fish Reef</i> Light unlit
QUEENSLAND		
659/2016	Aus255 825 826	<i>Abbot Point</i> Scientific instruments
369/2017	Aus255 826	Light beacon destroyed
370/2017	Aus255 826	Nav aids off station; nav aids destroyed; depths unreliable; obstructions
980/2017	Aus255	Mooring buoys
745/2017	Aus269	<i>Airlie Beach</i> Wreck
884/2016		<i>Bowen</i> Light beacon destroyed
968/2016	Aus268	Harbour works
326/2017	Aus268	Light buoy off station
461/2017	Aus268	Obstruction
492/2018	Aus268 825 826	Harbour works
462/2017	Aus301	<i>Boyd Point</i> Exclusion zone
403/2018	Aus301 4060 4603 4620 4720	Mooring buoys
159/2018	Aus244 245 246 271	<i>Boyne River to Gladstone</i> Dredging operations
25/2018	Aus490 816 817	<i>Breaksea Spit</i> Foul ground
213/2018	Aus236	<i>Bribie Island</i> Shoaling
26/2018	Aus237	<i>Brisbane</i> Light beacon destroyed
27/2018	Aus236	Harbour works

660(T)/2018 AUSTRALIA - TEMPORARY AND PRELIMINARY NOTICES

<i>Notice</i>	<i>Charts affected</i>	<i>Locality and Subject</i>
		<i>Brisbane River</i>
1205/2016	Aus237	Harbour works
66/2017	Aus238	Light unlit
176/2017	Aus238	Scientific instrument
519/2017	Aus237	Virtual AIS
561/2017	Aus238	Light buoys
611/2017	Aus238	Harbour works
324/2018	Aus238	Harbour works
454/2018	Aus236 237	Light buoy
494/2018	Aus238	Harbour works
630/2018	Aus238	Harbour works
		<i>Bundaberg</i>
605/2016	Aus242	Shoaling
252/2017	Aus242	Navais off station
520/2017	Aus242	Harbour works
707/2017	Aus242	Anchoring prohibited
793/2017	Aus242	Dredging operations
455/2018	Aus242	Light beacon
		<i>Bunker Group</i>
606/2016	Aus490 818 819	Foul ground westwards
		<i>Burnett River</i>
250/2018	Aus242	Wreck
		<i>Cairns</i>
253/2017	Aus262 263	Shoaling
665/2017	Aus263 264	Dredging operations
1090/2017	Aus263 264	Wreck
251/2018	Aus264	Wreck
576/2018	Aus262 263 830	Light unreliable
		<i>Cape Bowling Green</i>
1214/2013	Aus826 827	Scientific instrument
1034/2017	Aus826 827	Light buoy off station eastwards
		<i>Cape Flattery</i>
708/2017	Aus270	Shoaling
		<i>Cooktown</i>
926/2016	Aus270	Obstruction
405/2018	Aus270	Light buoys unlit
		<i>Daintree River</i>
577/2018	Aus831	Light buoy withdrawn
		<i>Daydream Island</i>
418/2017	Aus252 253	Lights unlit; light buoys established
		<i>Ellis Channel</i>
834/2017	Aus293 299	Light buoy off station
		<i>First Three Mile Opening</i>
28/2018	Aus281	Light unreliable
		<i>Fitzroy Island</i>
72/2018	Aus830	Light buoys
		<i>Fitzroy River</i>
661/2016	Aus819	Scientific instrument
		<i>Flagstaff Bay</i>
750/2017	Aus826	Light unlit

660(T)/2018 AUSTRALIA - TEMPORARY AND PRELIMINARY NOTICES

<i>Notice</i>	<i>Charts affected</i>	<i>Locality and Subject</i>
325/2018	Aus235 236	<i>Flinders Reef</i> Light buoy restored
456/2018	Aus235 236	Light buoy off station
1182/2016	Aus816	<i>Gardner Bank</i> Wreck
579/2014	Aus245 246 819	<i>Gladstone</i> Scientific instruments
568/2016	Aus245 271	Harbour works
68/2017	Aus244 245 271	Harbour works
291/2017	Aus245	Shoaling
521/2017	Aus258	<i>Gladys Inlet</i> Light buoy off station
564/2017	Aus268 825	<i>Gloucester Passage</i> Light buoys off station
361/2018	Aus230	<i>Gold Coast</i> Scientific instruments
110/2018	Aus230	<i>Gold Coast Seaway</i> Shoaling
633/2018	Aus230	Light buoy
406/2018	Aus230	<i>Gold Coast Seaway to Narrownneck Reef</i> Dredging operations
523/2017	Aus821 824 825	<i>Great Barrier Reef</i> Shoaling
664/2016	Aus241	<i>Great Sandy Strait</i> Scientific instrument
971/2016	Aus241 817	Shoaling
372/2017	Aus241 817	Light buoys
982/2017	Aus240	Light beacon destroyed
1035/2017	Aus240	Beacon destroyed
214/2018	Aus240	Light beacon destroyed
566/2017	Aus254	<i>Hamilton Island</i> Harbour works
401/2016	Aus250	<i>Hay Point</i> Scientific instrument
665/2016	Aus249 250 823	Light unlit
20/2017	Aus250	Obstructions
292/2017	Aus249 823	Obstruction
578/2018	Aus817	<i>Hervey Bay</i> Wreck
293/2017	Aus259 267	<i>Hinchinbrook Channel</i> Light buoy unlit; light beacon unlit
215/2018	Aus259	Wreck
362/2018	Aus259	Light buoy off station
495/2018	Aus267	Light buoy off station
1369/2015	Aus828	<i>Hinchinbrook Island</i> Light buoy withdrawn
1036/2017	Aus240 815 817	<i>Inskip Point</i> Light unlit

660(T)/2018 AUSTRALIA - TEMPORARY AND PRELIMINARY NOTICES

<i>Notice</i>	<i>Charts affected</i>	<i>Locality and Subject</i>
67/2016 363/2018	Aus6 Aus6	<i>Karumba</i> Shoaling Dredging operations
872/2017	Aus270 280 281 833 834	<i>LADS Passage</i> Shoaling
917/2017	Aus252	<i>Laguna Quays</i> Shoaling; nav aids
743/2015 375/2017	Aus259 267 Aus259 267	<i>Lucinda</i> Light buoy off station; light buoy unlit Shoaling
377/2017 162/2018	Aus250 Aus250	<i>Mackay</i> Traffic signal station unlit Harbour works
379/2014 919/2017	Aus256 Aus256	<i>Magnetic Island</i> Scientific instrument Shoaling
111/2018 635/2018	Aus236 Aus236	<i>Manly Boat Harbour</i> Drilling operations Dredging operations
328/2018 329/2018	Aus235 Aus235	<i>Mooloolaba</i> Dredging Shoaling
528/2018	Aus235	<i>Mooloolaba Harbour</i> Light buoy
740/2014 1122/2016 111/2017 112/2017 328/2017 421/2017 422/2017 423/2017 468/2017 526/2017 569/2017 32/2018 291/2018 408/2018 459/2018 529/2018 530/2018 531/2018 636/2018	Aus236 Aus235 236 Aus236 Aus236 Aus236 Aus236 Aus236 Aus236 Aus236 Aus236 Aus236 Aus236 Aus235 236 Aus235 236 Aus236 Aus236 Aus236 Aus236 Aus236	<i>Moreton Bay</i> Wreck Light buoy Beacon destroyed Wreck Light beacon destroyed Light beacon destroyed Light unlit Ship to ship transfer Cable laying operations Light beacon damaged Dredging operations Dredging operations Beacon damaged Scientific instruments Shoaling Dredging operations Scientific instrument Light Buoy; Wreck Light beacon destroyed
467/2016 470/2017	Aus816 Aus816	<i>North Gardner Bank</i> Wreck Foul ground
874/2017	Aus819	<i>One Tree Island</i> Scientific instrument
667/2017	Aus367 490 820	<i>Peaked Island</i> Search and rescue exercise northeastwards

660(T)/2018 AUSTRALIA - TEMPORARY AND PRELIMINARY NOTICES

<i>Notice</i>	<i>Charts affected</i>	<i>Locality and Subject</i>
217/2018	Aus813 814	<i>Point Danger</i> Scientific instrument
987/2017 532/2018	Aus270 Aus270	<i>Port Douglas</i> Dredging operations Light buoy
379/2017	Aus252 824	<i>Proserpine River</i> Light beacon unlit
714/2016 1095/2017	Aus235 236 Aus236	<i>Pumicestone Channel</i> Scientific instruments Marine farm; light buoy
365/2018 637/2018	Aus256 827 Aus256 827	<i>Rattlesnake Island</i> Military exercise Military exercise
376/2015 164/2018	Aus294 Aus294	<i>Red Island Point</i> Light buoys unlit Wreck
615/2017	Aus829 830	<i>Russell Heads</i> Light withdrawn
367/2018	Aus260 261 367 822	<i>Shoalwater Bay</i> Live firing
570/2017 638/2018 639/2018	Aus252 253 269 Aus253 269 Aus252 253 269 824	<i>Shute Harbour</i> Lights; harbour works completed Light beacons destroyed Drilling operations
833/2016	Aus293 299	<i>Thursday Island</i> Dolphin damaged
469/2016 513/2016 380/2017 572/2017 756/2017 838/2017 926/2017 117/2018 642/2018	Aus257 Aus257 Aus256 827 Aus257 Aus256 Aus257 Aus256 827 Aus256 Aus256 257 827	<i>Townsville</i> Harbour works Harbour works Scientific instruments Dredging operations Diving operations Harbour works Light beacon destroyed Light beacon unlit Dredging operations
1274/2013	Aus831 832	<i>Two Islands</i> Wreck
330/2018	Aus241	<i>Urangan Harbour</i> Dredging operations; harbour works
1257/2016 179/2017 33/2018 255/2018 293/2018 411/2018 643/2018	Aus4 Aus4 Aus4 Aus4 301 701 Aus4 Aus4 Aus4 701	<i>Weipa</i> Harbour works Light buoy off station Light beacon destroyed Scientific instruments Dredging operations Exclusion zone Shoaling
301/2016	Aus252 253 824	<i>Whitsunday Island</i> Wreck

660(T)/2018 AUSTRALIA - TEMPORARY AND PRELIMINARY NOTICES

<i>Notice</i>	<i>Charts affected</i>	<i>Locality and Subject</i>
34/2018	Aus252 253 269 824	<i>Whitsunday Passage</i> Wreck
473/2017	Aus240 815 817	<i>Wide Bay</i> Shoaling; navline
427/2018	Aus126 347 780	SOUTH AUSTRALIA <i>Backstairs Passage</i> Cable operations
173/2018	Aus127	<i>Cape Jaffa</i> Shoaling
436/2017	Aus485 780	<i>Fleurieu Peninsula</i> Hulk; prohibited area
1000/2016	Aus125	<i>Glenelg</i> Shoaling; dredging operations
123/2018	Aus139 781	<i>Gulf St Vincent</i> Artificial reef
653/2018	Aus130 137 138	<i>Gulf of St Vincent</i> Scientific instruments
1101/2017	Aus777	<i>Lucky Bay</i> Harbour works
720/2008 1048/2016 1221/2016	Aus137 Aus130 485 781 Aus130 138	<i>Port Adelaide</i> Shoaling Obstruction westwards Light beacon destroyed
620/2016	Aus136	<i>Port Pirie</i> Harbour works
438/2017	Aus132 778	<i>Snapper Point to Douglas Bank</i> Shoaling
585/2017	Aus150 151	<i>Western Port</i> Beacon removed; buoy established
485/2017	Aus135	<i>Whyalla</i> Light beacons destroyed
109/2018	Aus4601	TASMAN SEA <i>Tasman Basin</i> Light buoy off station
504/2018	Aus169	TASMANIA <i>Blackman Bay</i> Wreck
1009/2016	Aus173 795 796	<i>Bruny Island</i> Scientific instruments southeastwards
888/2017	Aus173	<i>D'Entrecasteaux Channel</i> Marine farm works
944/2016 263/2018	Aus164 Aus164	<i>Devonport</i> Light beacon destroyed Shoaling
1010/2016	Aus767 798	<i>Eddystone Point</i> Scientific instruments southeastwards

660(T)/2018 AUSTRALIA - TEMPORARY AND PRELIMINARY NOTICES

<i>Notice</i>	<i>Charts affected</i>	<i>Locality and Subject</i>
1011/2016	Aus793	<i>Flying Cloud Point</i> Scientific instruments westwards
576/2012	Aus171 796	<i>Frederick Henry Bay</i> Scientific instruments
430/2018	Aus790	<i>Hunter Island</i> Scientific instrument
36/2017 227/2018	Aus174 Aus173	<i>Huon River</i> Wreck Marine farm works
1002/2017	Aus168	<i>Launceston</i> Harbour works
264/2018	Aus798 800	<i>Lookout Head</i> Scientific instrument
169/2016 1194/2016 440/2017 587/2017 1053/2017 228/2018	Aus177 Aus177 Aus177 792 Aus177 792 Aus177 792 Aus177	<i>Macquarie Harbour</i> Scientific instruments Harbour works Scientific instruments Scientific instruments Beacon established Marine farm works
170/2016	Aus170 766 797	<i>Maria Island</i> Scientific instruments
1103/2014	Aus170 766 797	<i>Mercury Passage</i> Obstructions
372/2016	Aus171 174	<i>North West Bay</i> Mooring area
627/2016	Aus171 796	<i>Pipe Clay Head to Pitt Water</i> Scientific instruments
182/2018	Aus172	<i>Prince of Wales Bay</i> Harbour works
505/2018	Aus172	<i>River Derwent</i> Wreck
1225/2016	Aus168	<i>River Tamar</i> Scientific instruments
1104/2017 266/2018	Aus790 Aus790	<i>Robbins Island</i> Scientific instruments Light buoy off station
134/2018 183/2018	Aus175 Aus175	<i>Spring Bay</i> Marine farm Wreck
539/2017 544/2018 597/2018 598/2018	Aus171 795 796 Aus173 795 796 Aus173 795 796 Aus173	<i>Storm Bay</i> Scientific instrument Scientific instrument Scientific instrument Buoy off station
646/2018	Aus316 318 725 726 4721	TIMOR SEA <i>Bathurst Island</i> Seismic survey northwards

660(T)/2018 AUSTRALIA - TEMPORARY AND PRELIMINARY NOTICES

<i>Notice</i>	<i>Charts affected</i>	<i>Locality and Subject</i>
223/2009 584/2018	Aus312 4721 Aus316 318 725 726 4603 4721	<i>Sahul Banks</i> Navaid; racon non operational Seismic survey northwards
358/2016	Aus377 840	TORRES STRAIT <i>Darnley Island</i> Wreck
878/2017 928/2017	Aus299 Aus299	<i>Hammond Island</i> Harbour works; dredging Light buoy withdrawn
84/2016	Aus839	<i>Kai-Maituine Reef</i> Wreck
410/2016	Aus841 842	<i>Talbot Islands to Deliverance Island</i> Obstructions
586/2017	Aus143	VICTORIA <i>Barwon Heads</i> Light buoy off station
41/2018 471/2018	Aus357 Aus357 487	<i>Bass Strait</i> Survey operations Restricted areas
1271/2015	Aus349	<i>Cape Reamur</i> Exclusion zone; light buoy
376/2018	Aus357	<i>Golden Beach</i> Scientific instruments
634/2017 261/2018	Aus182 Aus182	<i>Lakes Entrance</i> Dredging operations Shoaling
126/2018	Aus357 487	<i>Ninety Mile Beach</i> Traffic separation scheme southwestwards
43/2018	Aus181 182	<i>Port Albert</i> Shoaling
1165/2016 120/2017 130/2018 179/2018 225/2018 307/2018 341/2018 343/2018 379/2018 594/2018 655/2018 656/2018 657/2018	Aus158 Aus154 Aus154 Aus153 157 Aus157 Aus143 Aus155 Aus158 Aus143 155 Aus143 158 Aus143 157 Aus154 Aus144	<i>Port Phillip</i> Buoy off station Light beacon destroyed Harbour works Light buoys; AIS Light beacon destroyed Harbour works Light unlit Light buoy off station Light beacon unlit Light buoy off station Exclusion Zone Harbour works Light buoy off station
542/2018	Aus181 182	<i>Port Welshpool</i> Harbour works
180/2018	Aus140	<i>Portland Harbour</i> Dredging operations
45/2018	Aus181	<i>Shoal Inlet Entrance</i> Light destroyed

660(T)/2018 AUSTRALIA - TEMPORARY AND PRELIMINARY NOTICES

<i>Notice</i>	<i>Charts affected</i>	<i>Locality and Subject</i>
1053/2016	Aus150	<i>The Narrows</i> Shoaling
1052/2017	Aus143 788	<i>Torquay</i> Fish aggregating devices
764/2017	Aus150 151 152	<i>Western Port</i> Light beacons unlit
543/2018	Aus150	Harbour works
595/2018	Aus151	Beacon destroyed
WESTERN AUSTRALIA		
463/2018	Aus65 66	<i>Barrow Island</i> Survey operations
881/2017	Aus325 326 739	<i>Bedout Island</i> Scientific instruments northwestwards
576/2017	Aus319 320	<i>Browse Island</i> Prelude FLNG commissioning
219/2018	Aus319 320 322 4721 4722	Subsea operations
420/2018	Aus319 320	Mooring buoy northwestwards
534/2018	Aus319 320 4721 4722	Drill rig northwestwards
371/2018	Aus115	<i>Bunbury</i> Dredging operations
988/2016	Aus73	<i>Carnarvon</i> Obstruction
578/2017	Aus73	Shoaling
271/2013	Aus57 741 742	<i>Dampier</i> Obstruction
216/2016	Aus58 59 60	Scientific instruments
777/2016	Aus57 58 60 741 742	Shoaling
305/2017	Aus59	Harbour works
851/2015	Aus57 327 741 742	<i>Dampier Archipelago</i> Obstruction eastwards
1078/2015	Aus318 319 727 728	<i>East Holothuria Reef</i> Shoaling
761/2017	Aus110	<i>Emu Point</i> Scientific instrument
372/2018	Aus744 745	<i>Exmouth</i> Mooring buoy
940/2016	Aus754 755	<i>Five Fathom Bank</i> Scientific instrument
476/2016	Aus116 335 336 756 757	<i>Flinders Bay</i> Shoaling
339/2017	Aus326 740	<i>Forestier Islands</i> Scientific instrument northwestwards
537/2018	Aus112 113 114 117 754	<i>Fremantle</i> Dredging operations
536/2017	Aus81	<i>Geraldton</i> Marine farm

660(T)/2018 AUSTRALIA - TEMPORARY AND PRELIMINARY NOTICES

<i>Notice</i>	<i>Charts affected</i>	<i>Locality and Subject</i>
1043/2016	Aus320 323 730 732	<i>Hall Point to Raft Point</i> Shoaling
37/2018	Aus83 332 751	<i>Houtman Abrolhos</i> Shoaling
522/2016	Aus328	<i>Montebello Islands</i> Light buoy northwestwards
302/2018	Aus328 329 744 745	<i>Muiron Islands</i> Pipeline operations; ship to ship transfer
424/2018	Aus328 329 744 4723 4725	FPSO off station northwestwards
538/2018	Aus328 329 744	Subsea operations northwestwards
650/2018	Aus328 329 4723 4725	<i>North West Cape</i> Drill rig northwestwards
478/2016	Aus754	<i>Perth</i> Scientific instruments westwards
1123/2015	Aus54	<i>Port Hedland</i> Light beacons; tug mooring
468/2018	Aus54	Dredging operations
586/2018	Aus52 53	Harbour works
1092/2016	Aus55 326 740	<i>Port Walcott</i> Tide gauge
338/2018	Aus55 56	Survey operations
480/2016	Aus327	<i>Rankin Bank</i> Scientific instrument
731/2016	Aus327 328	Scientific instruments southwestwards
630/2017	Aus327	Subsea operations
940/2017	Aus327	Mooring buoys
588/2018	Aus327 4723	Subsea operations
631/2017	Aus754	<i>Rottneest Island</i> Scientific instrument
590/2018	Aus754	Subsea operations
763/2017	Aus324 325 4722	<i>Rowley Shoals</i> Scientific instruments
592/2018	Aus112	<i>Trigg Island</i> Light buoy
171/2018	Aus32	<i>Wyndham</i> Shoaling
304/2018	Aus40 732 733	<i>Yampi Sound</i> Light beacon destroyed
INDIAN OCEAN		
454/2015	Aus4070 4071	<i>Sumatera</i> Scientific instruments westwards
PACIFIC OCEAN		
424/2015	Aus4604 4622	Scientific instruments
664/2017	Aus4623	Scientific instruments
PAPUA NEW GUINEA		
35/2018	Aus507 4620 4621	<i>Batumata Point</i> Survey operations southeastwards
412/2018	Aus506 507 623	Shoaling

660(T)/2018 AUSTRALIA - TEMPORARY AND PRELIMINARY NOTICES

<i>Notice</i>	<i>Charts affected</i>	<i>Locality and Subject</i>
979/2016 298/2017	Aus523 642 643 Aus643	<i>Huon Gulf</i> Survey operations Light buoy off station
531/2017	Aus642 643	<i>Lae</i> Infrastructure; coastline
533/2018	Aus505 621	<i>Lark Patch</i> AIS inoperative
299/2017	Aus397 399 684 4060 4604 4622	<i>Madehas Island</i> Light unlit
499/2018	Aus505 621	<i>Manubada Island to Padana Nahua Passage</i> Shoaling
460/2018	Aus673	<i>Nessup Island</i> Light buoy off station
294/2018	Aus674 677	<i>New Britain</i> Light beacon destroyed
164/2013	Aus628	<i>Nuakata Passage</i> Light beacon destroyed
226/2017	Aus505 621	<i>Padana Nahua Passage to Bootless Inlet</i> Shoaling
144/2016	Aus622	<i>Port Moresby</i> Harbour works; horizontal datum error
264/2017	Aus379 505 621	<i>Vabukori</i> Light unlit
SOLOMON ISLANDS		
135/2018	Aus4623 4634 SLB201 304	<i>Florida Islands</i> Light unlit
91/2018	SLB102 301 302	<i>Ghizo Island</i> Shoaling
677/2017	SLB101	<i>Honiara and Lungga Roads</i> Shoaling
136/2018	SLB104 304	<i>Indispensable Strait</i> Light unlit
678/2017	SLB101 201	<i>Lungga Point</i> Light beacon unlit
679/2017	Aus4604 4623 4634 SLB304 305	<i>Maana'oba Island to Mbita'ama Harbour</i> Lights unlit
680/2017	SLB101	<i>Marau Sound</i> Light beacons unlit
681/2017	Aus4623 SLB107	<i>Ndende Island</i> Light unlit
682/2017	SLB102 301 302	<i>Nega Point</i> Light beacons unlit
184/2018	Aus4604 4623 4634 SLB302	<i>New Georgia Island</i> Lights unlit

660(T)/2018 AUSTRALIA - TEMPORARY AND PRELIMINARY NOTICES

<i>Notice</i>	<i>Charts affected</i>	<i>Locality and Subject</i>
683/2017	Aus4623 4634 SLB305	<i>San Christobal Island</i> Light unlit
684/2017	Aus4604 4621 4622 4623 4634 SLB301 302	<i>Vaghoe Point</i> Light unlit

HYDROGRAPHIC REPORTS

<i>Locality</i>	<i>Report</i>	<i>Ship/Authority</i>	<i>Observer</i>
NT- Darwin	Pipeline operations complete		J Ellis

III

NAVIGATION WARNINGS

The Australian Hydrographic Office will no longer compile Section III of the Australian Notices to Mariners. For the most up to date navigation warnings please refer to:

AMSA Navigation Warnings

<http://amsa.gov.au/search-and-rescue/distress-and-safety-comms/msi/msi-email/index.asp>

New Zealand Notices to Mariners (Navarea XIV warnings)

<http://www.linz.govt.nz/sea/maritime-safety/notices-mariners>

To accompany Australian Notice to Mariners 602/2018

ENVIRONMENTALLY SENSITIVE SEA AREA
(ESSA)

Areas of this chart are Environmentally Sensitive Sea Areas (ESSA). Areas within this marine protected area have restrictions on access and activities. For details see Seafarers Handbook for Australian Waters AHP 20.

Note for chart Aus 4074

To accompany Australian Notice to Mariners 624/2018

ENVIRONMENTALLY SENSITIVE SEA AREA
(ESSA)

Areas of this chart are Environmentally Sensitive Sea Areas (ESSA). Areas within this marine protected area have restrictions on access and activities. For details see Seafarers Handbook for Australian Waters AHP 20.

Note for chart Aus 4727

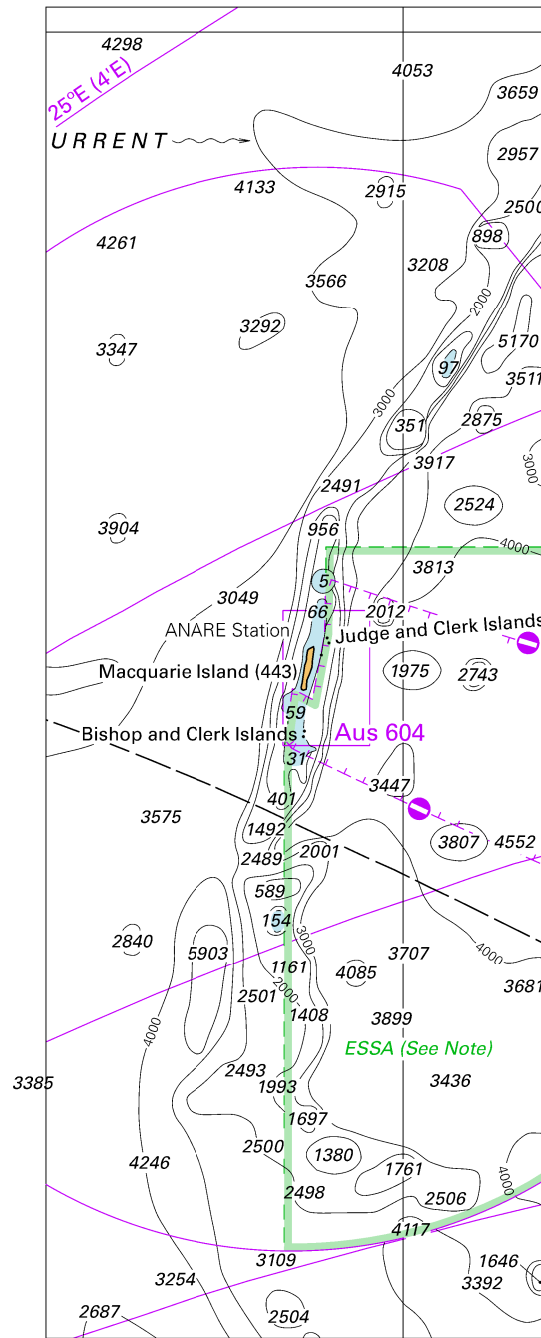
To accompany Australian Notice to Mariners 623/2018

HISTORIC WRECK WITH PROTECTED ZONE

This historic shipwreck lies within a protected or no entry zone as legislated by Commonwealth or State authorities. These zones may cover an area up to a radius of 800 metres from the designated wreck location. Entry into these protected zones requires a permit. For details see Seafarers Handbook for Australian Waters AHP 20.

Note for chart Aus 127

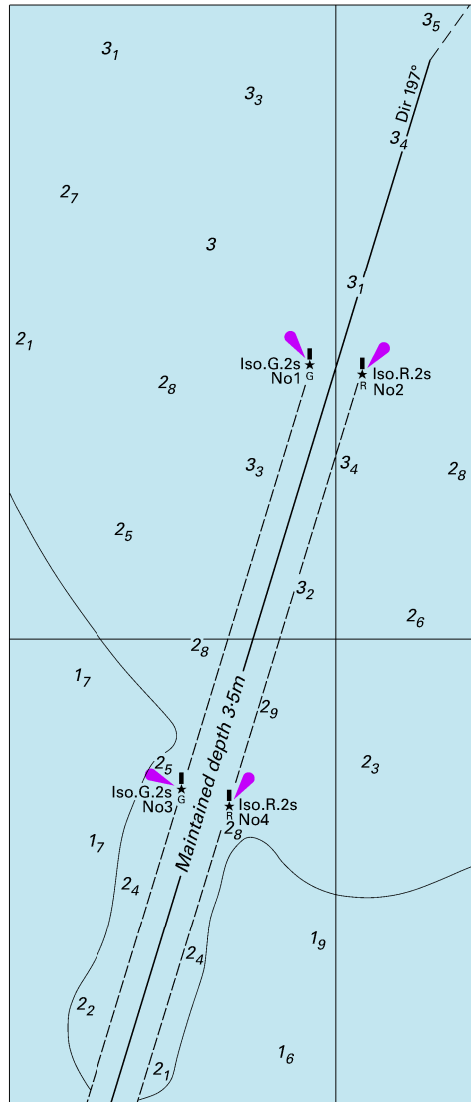
To accompany Australian Notice to Mariners 602/2018



© Commonwealth of Australia 2018
 Block for Chart Aus 4074 (66.3 x 176.1mm)

(149.3 x 127.0mm)

To accompany Australian Notice to Mariners 615/2018

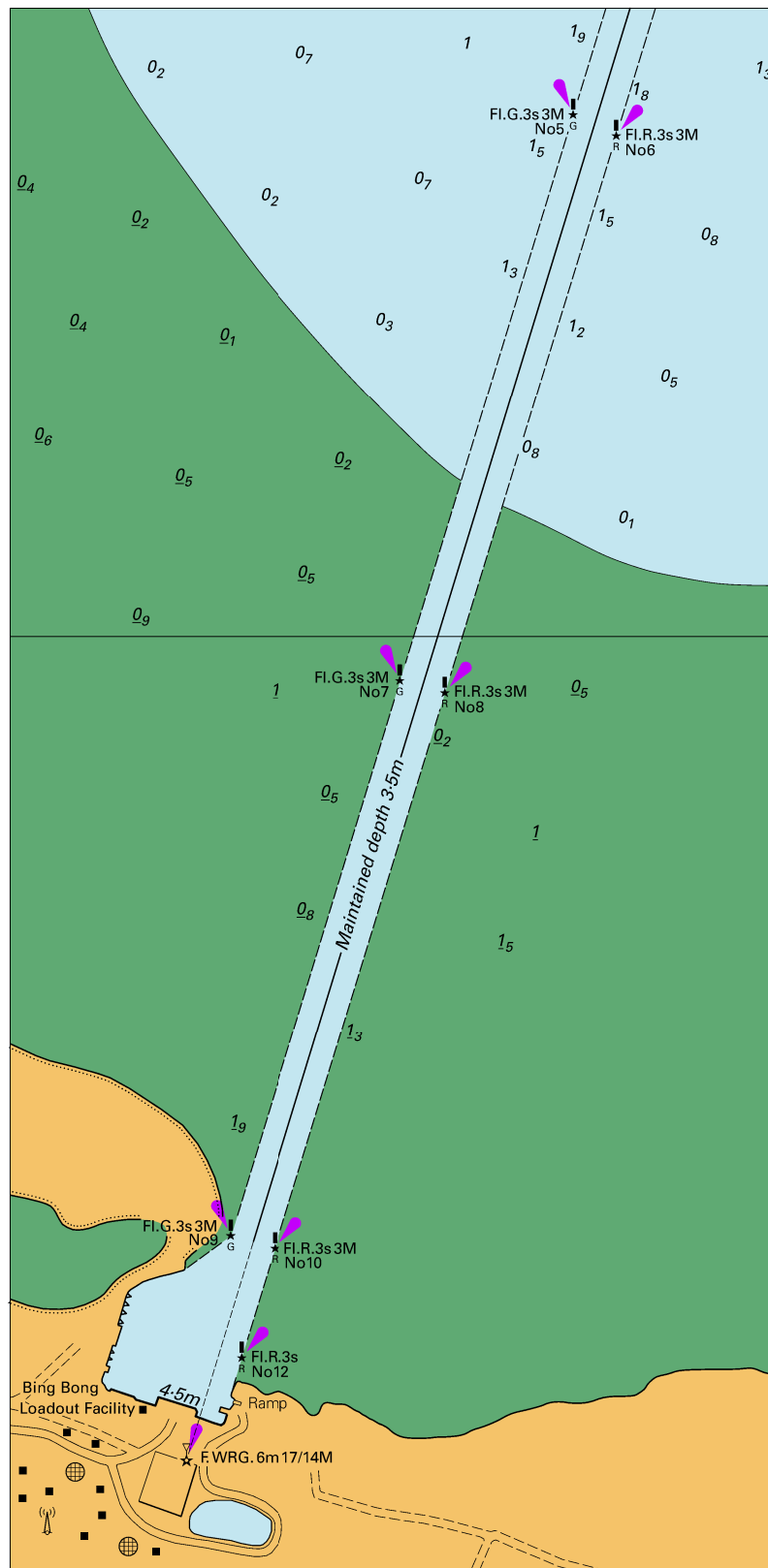


© Commonwealth of Australia 2018

Block B for Chart Aus 13

(62.3 x 145.6mm)

To accompany Australian Notice to Mariners 615/2018

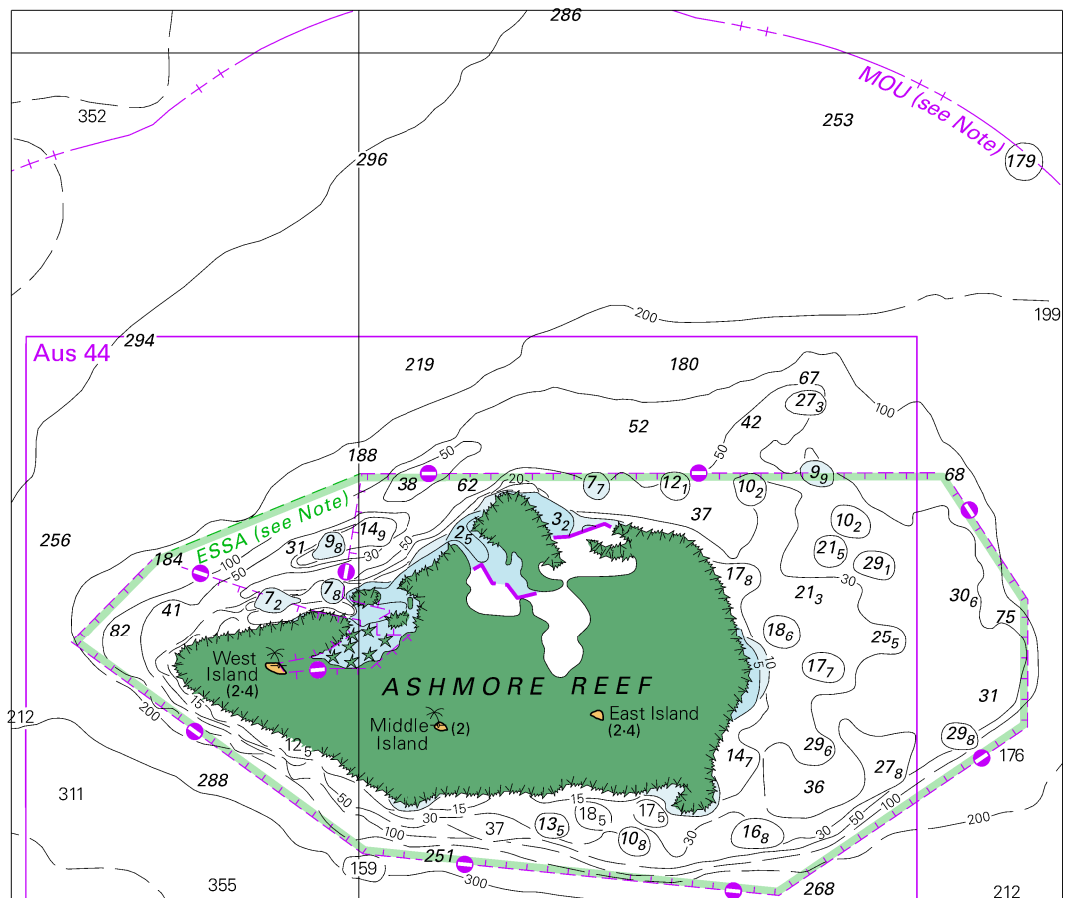


© Commonwealth of Australia 2018

Block A for Chart Aus 13

(104.4 x 213.4mm)

To accompany Australian Notice to Mariners 622/2018

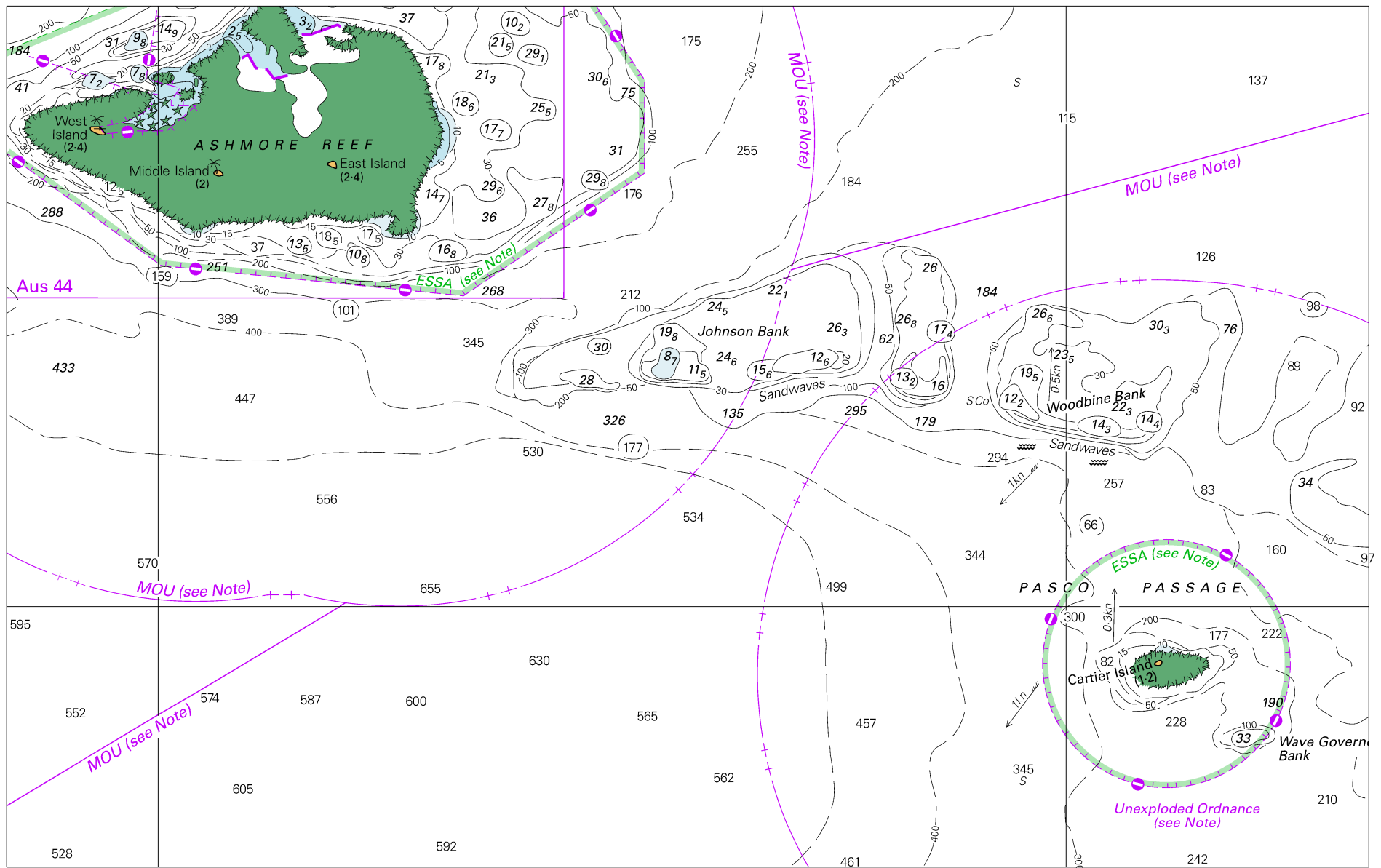


Block for Chart Aus 317

© Commonwealth of Australia 2018

(138.9 x 117.5mm)

To accompany Australian Notice to Mariners 622/2018

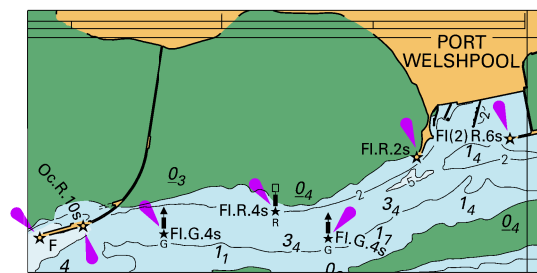


Block for Chart Aus 319

© Commonwealth of Australia 2018

(247.7 x 156.6mm)

To accompany Australian Notice to Mariners 625/2018



© Commonwealth of Australia 2018
 Block A for Chart Aus 182 (68.4 x 34.6mm)

To accompany Australian Notice to Mariners 625/2018

