



10 August 2018

Edition 16

AUSTRALIAN NOTICES TO MARINERS

Notices 661 - 705

Published fortnightly by the Australian Hydrographic Office



Australian Notices to Mariners are the authority for correcting charts and publications published by the Australian Hydrographic Office covering Australia, Papua New Guinea, Solomon Islands, Australian Antarctic Territory and Timor-Leste.

Commodore F.T. FREEMAN RAN
Hydrographer of Australia

SECTIONS.

- I. **Australian Notices to Mariners, including blocks and notes.**
- II. **Hydrographic Reports.**
- III. **Navigational Warnings.**

SUPPLEMENTS.

- I. **Tracings**
- II. **Cumulative List of Australian Notices to Mariners.**
- III. **Cumulative List of Temporary and Preliminary Australian Notices to Mariners.**
- IV. **Temporary and Preliminary Notices in force.**
- V. **Amendments to Admiralty List of Lights and Fog Signals (Vol K), Radio Signals (NP 281(2), 282, 283(2), 285, 286(4)) and Sailing Directions (NP 9, 13, 14, 15, 33, 34, 35, 36, 39, 44, 51, 60, 61, 62, 100, 136).**

© Commonwealth of Australia 2018

This work is copyright. Apart from any use permitted under the Copyright Act 1968, no part may be reproduced by any process, adapted, communicated or commercially exploited without prior written permission from The Commonwealth represented by the Australian Hydrographic Office.

IMPORTANT NOTICE

This edition of Notices to Mariners includes all significant information affecting AHO products which the AHO has become aware of since the last edition. All reasonable efforts have been made to ensure the accuracy and completeness of the information, including third party information, on which these updates are based. The AHO regards third parties from which it receives information as reliable, however the AHO cannot verify all such information and errors may therefore exist. The AHO does not accept liability for errors in third party information.

GENERAL INSTRUCTIONS

The substance of these notices should be inserted on the charts affected.

Bearings are referred to the true compass and are reckoned clockwise from North; those relating to lights are given as seen by an observer from seaward.

Positions quoted in notices relate to WGS84 which is the horizontal datum for all charts produced by the Australian Hydrographic Office.

The range quoted for a light is its nominal range.

Depths are with reference to the chart datum of each chart. Heights are above mean high water springs or mean higher high water, as appropriate.

The capital letter (P) or (T) after the number of any notice denotes a preliminary or temporary notice respectively, which are contained separately at the end of the permanent notices.

REPORTING OF DANGERS

Mariners are particularly requested to notify the AUSTRALIAN HYDROGRAPHIC OFFICE, Locked Bag 8801 Wollongong, NSW 2500 (Fax 02-4223 6599, e-mail datacentre@hydro.gov.au or, alternatively by filling in and submitting the [Hydrographic Notes](#) forms located on the web site – www.hydro.gov.au), immediately on the discovery of new dangers or suspected dangers to navigation. For changes or defects in aids to navigation notify AusSAR (Fax 02-6230 6868 or email rccaus@amsa.gov.au).

AUTHORISED USE

Copies of Australian notices are available free of charge from the Australian Hydrographic Office (AHO) website (www.hydro.gov.au) and through the eNotices (email) service (www.hydro.gov.au/enotices/enotices.htm).

Individual Notices may be copied for the purpose of inserting Notice substance on official charts and publications. Paper copies may be printed by chart agents and distributed to customers on a cost recovery basis. Participating chart agents are listed on the AHO website as providing a 'Paper Notices to Mariners' service (www.hydro.gov.au/webapps/jsp/agents/agents-list.jsp). Copies of the notices may not be sold for profit without prior written agreement.

NUMERICAL INDEX OF NOTICES TO MARINERS

Edition No 16

Notices	Aus Chart, INT Chart, ENC Cell, AHP, BA Pubs
661	Aus 15, 194, 201, 221, 729, 730
662	Aus 320, 323
663	EXERCISE KAKADU 2018 - MAJOR NAVAL EXERCISE IN NORTHERN AUSTRALIAN WATERS
664	Aus 196
665	Aus 268
666	Aus 237, 238
667	Aus 256, 827
668	Aus 230
669	Aus 240
670	Aus 240
671	Aus 250
672	Aus 548
673	Aus 637
674	Aus 293, 299
675	Aus 50
676	Aus 920
677	Aus 341
678	Aus 181, 182
679	Aus 150
680(T)	Aus 489, 809, 810, 4643, INT 643
681(T)	Aus 207, 209, 219, 489, 809, 810, 4643, INT 643
682(T)	Aus 489, 809
683(T)	Aus 262, 263, 830
684(T)	Aus 249, 250
685(T)	Aus 6
686(T)	Aus 238
687(T)	Aus 236
688(T)	Aus 236
689(T)	Aus 235, 236
690(T)	Aus 4604, 4621, INT 604, 621
691(T)	Aus 387, 388, 543, 666, 673
692(T)	Aus 26, 28
693(T)	Aus 316, 318, 725, 726, 4603, 4721, INT 603, 721
694(T)	Aus 312, 4721, INT 721
695(T)	Aus 328
696(T)	Aus 73
697(T)	Aus 744, 745
698(T)	Aus 81, 751
699(T)	Aus 65
700(T)	Aus 130, 137
701(T)	Aus 357, 487
702(T)	Aus 155
703(T)	Aus 150, 151, 152
704(T)	Aus 173
705(T)	Aus 174

NUMERICAL INDEX OF CHARTS AFFECTED

Edition No 16

Aus Chart	Notices
Aus 6	685(T)
Aus 15	661
Aus 26	692(T)
Aus 28	692(T)
Aus 50	675
Aus 65	699(T)
Aus 73	696(T)
Aus 81	698(T)
Aus 130	700(T)
Aus 137	700(T)
Aus 150	679, 703(T)
Aus 151	703(T)
Aus 152	703(T)
Aus 155	702(T)
Aus 173	704(T)
Aus 174	705(T)
Aus 181	678
Aus 182	678
Aus 194	661
Aus 196	664
Aus 201	661
Aus 207	681(T)
Aus 209	681(T)
Aus 219	681(T)
Aus 221	661
Aus 230	668
Aus 235	689(T)
Aus 236	687(T), 688(T), 689(T)
Aus 237	666
Aus 238	666, 686(T)
Aus 240	669, 670
Aus 249	684(T)
Aus 250	671, 684(T)
Aus 256	667
Aus 262	683(T)
Aus 263	683(T)
Aus 268	665
Aus 293	674
Aus 299	674
Aus 312	694(T)
Aus 316	693(T)
Aus 318	693(T)
Aus 320	662
Aus 323	662
Aus 328	695(T)
Aus 341	677
Aus 357	701(T)
Aus 387	691(T)
Aus 388	691(T)
Aus 487	701(T)
Aus 489	680(T), 681(T), 682(T)
Aus 543	691(T)
Aus 548	672
Aus 637	673

Aus Chart	Notices
Aus 666	691(T)
Aus 673	691(T)
Aus 725	693(T)
Aus 726	693(T)
Aus 729	661
Aus 730	661
Aus 744	697(T)
Aus 745	697(T)
Aus 751	698(T)
Aus 809	680(T), 681(T), 682(T)
Aus 810	680(T), 681(T)
Aus 827	667
Aus 830	683(T)
Aus 920	676
Aus 4603	693(T)
Aus 4604	690(T)
Aus 4621	690(T)
Aus 4643	680(T), 681(T)
Aus 4721	693(T), 694(T)

INT Chart	Notices
INT 603	693(T)
INT 604	690(T)
INT 621	690(T)
INT 643	680(T), 681(T)
INT 721	693(T), 694(T)

661 AUSTRALIA - Products - New Charts, New Editions, Withdrawn Charts

Australian Hydrographic Office , UKHO

New Charts

Chart	Title and Geographical limits	Scale	Publication Date	Remarks
NIL				

New Electronic Navigation Chart (Aus ENC)

Cell Name	Title	Publication Date	Remarks
NIL			

New Editions and Withdrawn Charts

Chart	Title	Scale	Publication Date	Remarks
AUS 15 Edition 3	Australia - North Coast - Plans in the Northern Territory Plans: Gugari Rip Gove Inner Harbour Cumberland Strait Gove Harbour Jensen Bay Cadell Strait	1:10 000 1:12 500 1:25 000 1:37 500 1:37 500 1:75 000	10 August 2018	New Edition to incorporate latest bathymetric data. Chart Aus 15 Edition 2 dated 2 June 1995 is now superseded and must be withdrawn from use.
AUS 194 Edition 2	Australia - East Coast - New South Wales - Port Kembla including Wollongong Harbour Inset: Wollongong Harbour	1:6 000 1:7 500	10 August 2018	New Edition to incorporate latest bathymetric data. Chart Aus 194 Edition 1 dated 28 September 2007 is now superseded and must be withdrawn from use.
AUS 201 Edition 3	Australia - East Coast - New South Wales - Port Jackson (Eastern Sheet)	1:7 500	10 August 2018	New Edition to incorporate latest bathymetric data. Produced with blue contours. Chart Aus 201 Edition 2 dated 6 July 2001 is now superseded and must be withdrawn from use.
AUS 221 Edition 2	Australia - East Coast - New South Wales - Solitary Islands	1:50 000	10 August 2018	New Edition to incorporate latest bathymetric data. Chart Aus 221 Edition 1 dated 13 March 2009 is now superseded and must be withdrawn from use.
AUS 729 Edition 3	Australia - North West Coast - Western Australia - Cape Voltaire to Lamarck Island	1:150 000	10 August 2018	New Edition to incorporate latest bathymetric data. Chart Aus 729 Edition 2 dated 7 February 2003 is now superseded and must be withdrawn from use.
AUS730 Edition 3	Australia - North West Coast - Western Australia - Lamarck Island to Degerando Island	1:150 000	10 August 2018	New Edition to incorporate latest bathymetric data. Chart Aus 730 Edition 2 dated 7 February 2003 is now superseded and must be withdrawn from use.

Admiralty publication

NP No	Title	Date	Remarks
NP204-19	ADMIRALTY Tide Tables, Volume 4 2019, South Pacific Ocean (including Tidal Stream Tables).	16/8/2018	

661 AUSTRALIA - Products - New Charts, New Editions, Withdrawn Charts

Chart permanently withdrawn

Charts listed above as withdrawn no longer meet chart carriage requirements and should be marked as "superseded" and replaced with the new chart/ new edition listed prior to passage through the area covered by the new chart.

When placing orders with a chart agent between notice of forthcoming edition and its publication, mariners should advise whether their order pertains to the current edition or the new edition.

For further details refer to the AHO website at www.hydro.gov.au for new edition and new chart stock arrival information.

662 AUSTRALIA - Products - New Charts and New Editions to be published shortly

Australian Hydrographic Service

New Charts to be published shortly

Chart	Title	Scale	Expected Publication Date	Remarks
NIL				

New Editions to be published shortly

Chart	Title	Scale	Expected Publication Date	Remarks
AUS 320	Australia - North West Coast - Western Australia - Browse Island to Adele Island including Bonaparte Archipelago	1:300 000	24 August 2018	New Edition to incorporate latest bathymetric data.
AUS 323	Australia - North West Coast - Western Australia - Adele Island to Lacepede Islands including King Sound	1:300 000	24 August 2018	New Edition to incorporate latest bathymetric data.

663 AUSTRALIA - EXERCISE KAKADU 2018 - MAJOR NAVAL EXERCISE IN NORTHERN AUSTRALIAN WATERS

Department of Defence

Mariners are advised that there will be an increase in Naval activity in the Port of Darwin from 31 August to 15 September associated with EXERCISE KAKADU 2018.

The North Australia Exercise Area (NAXA) will be activated for military exercises including live firing in an area bounded by: 12° 49'.33 S 130° 46'.65 E, 15° 05'.73 S 129° 54'.35 E, thence the minor arc of a circle of 170NM radius centred on Darwin DME (12° 25'.40 S 130° 54'.38 E), to 11° 35'.80 S 128° 08'.38 E, 12° 18'.20 S 130° 29'.90 E, thence the minor arc of a circle of 25NM radius centred on Darwin DME, to 12° 49'.33 S 130° 46'.65 E and 12° 18'.88 S 131° 19'.05 E, thence the minor arc of a circle of 25NM radius centred on Darwin DME, to 12° 00'.28 S 130° 54'.88 E, 9° 54'.73 S 130° 52'.12 E, thence the minor arc of a circle of 150NM radius centred on Darwin DME, to 11° 41'.02 S 133° 20'.67 E, 12° 18'.88 S 131° 19'.05 E.

Vessels should expect that live firing will take place within the NAXA during the period of the exercise at any time.

Merchant traffic may be invited to alter course to facilitate naval training manoeuvres. Vessels transiting the area during the exercise period are advised to navigate with caution, monitor VHF Channel 16, and ensure their vessels Automatic Identification Systems (AIS) is activated. Temporary anchorages have been established in the vicinity of Talc Head. There will be an increase in traffic crossing between the temporary anchorages and Darwin Naval Base. Mariners are advised to navigate with additional caution. Maritime industry enquiries related to Exercise KAKADU should be directed to RAN Maritime Trade Operations via phone +61 (0) 0431764980 or email MTO.OPSO@defence.gov.au.

664 AUSTRALIA - NEW SOUTH WALES - Botany Bay - Lights

Port Authority of New South Wales Notice 8/2017

Aus 196 [384/2018]

Amend	light to VQ(6)+LFI.10s	33° 57'.37 S	151° 11'.67 E
	light to VQ(6)+LFI.10s	33° 57'.42 S	151° 11'.74 E
	light to VQ(6)+LFI.10s	33° 57'.47 S	151° 11'.81 E

665 AUSTRALIA - QUEENSLAND - Bowen - Depths; nav aids

Maritime Safety Queensland

Aus 268 [956/2017]

Insert	accompanying block A	20° 02'.5 S	148° 16'.2 E
--------	----------------------	-------------	--------------

Aus 268 (Bowen) [956/2017]

Insert	accompanying block B	20° 01'.8 S	148° 15'.4 E
--------	----------------------	-------------	--------------

666 AUSTRALIA - QUEENSLAND - Brisbane River - Lytton Reach - Lights amended

Maritime Safety Queensland Notice 290/2018, 297/2018

Aus 237 [511/2018]

Amend	light to <i>Q.Bu (F Day) No5F</i>	27° 25'.03 S	153° 08'.75 E
	light to <i>Iso.Bu.2s (F Day) No5R</i>	27° 25'.24 S	153° 08'.67 E

Aus 238 [605/2018]

Amend	light to <i>Q.Bu (F Day) No5F</i>	27° 25'.03 S	153° 08'.75 E
	light to <i>Iso.Bu.2s (F Day) No5R</i>	27° 25'.24 S	153° 08'.67 E

667 AUSTRALIA - QUEENSLAND - Cleveland Bay - Salamander Reef - Light buoy

Maritime Safety Queensland Notice 274/2018

Aus 256 [614/2018]

Move	light buoy	19° 09'.53 S	147° 03'.52 E
	to	19° 10'.61 S	147° 04'.48 E

Aus 827 [240/2018]

Move	light buoy	19° 09'.53 S	147° 03'.52 E
	to	19° 10'.55 S	147° 04'.43 E

668 AUSTRALIA - QUEENSLAND - Gold Coast Seaway - Depths

Maritime Safety Queensland

Aus 230 [608/2018]

Replace	depth, 1 ₆ m, with depth, 1 ₂ m	27° 56'.42 S	153° 25'.14 E
---------	---	--------------	---------------

669 AUSTRALIA - QUEENSLAND - Great Sandy Strait - Beacon removed

Maritime Safety Queensland Notice 288/2018

Aus 240 [610/2018]

Delete	beacon	25° 36'.8 S	152° 52'.5 E
--------	--------	-------------	--------------

670 AUSTRALIA - QUEENSLAND - Great Sandy Strait - Snapper Creek - Depth

Maritime Safety Queensland

Aus 240 [669/2018]

Replace	depth, 1 ₂ m, with depth, 0 ₅ m	25° 54'.0 S	153° 01'.3 E
---------	---	-------------	--------------

671 AUSTRALIA - QUEENSLAND - Mackay - Slade Island - Light buoy southeastwards

Maritime Safety Queensland Notice 298/2018

Aus 250 (Mackay Harbour) [516/2018]

Insert	special spherical light buoy, <i>Fl(5)Y.20s</i> , without topmark	21° 06'.083 S	149° 15'.467 E
--------	---	---------------	----------------

672 PAPUA NEW GUINEA - Cape Gloucester - Borgen Bay - Nav aids

National Maritime Safety Authority PNG

Aus 548 [1240/2016]

Insert	accompanying block	5° 29'.40 S	148° 32'.50 E
--------	--------------------	-------------	---------------

673 PAPUA NEW GUINEA - Trobriand Islands - Losuia - Beacons
National Maritime Safety Authority PNG

Aus 637 (Losuia) [621/2014]

Insert	beacon desig, No3	8° 33'.281 S	151° 01'.660 E
	beacon desig, No5	8° 33'.096 S	151° 02'.263 E
	beacon desig, No7	8° 33'.079 S	151° 02'.509 E
	beacon desig, No8	8° 33'.049 S	151° 02'.504 E
	beacon desig, No11	8° 33'.193 S	151° 02'.796 E
	beacon desig, No12	8° 33'.121 S	151° 02'.809 E
	beacon desig, No14	8° 33'.112 S	151° 02'.964 E
	beacon desig, No15	8° 33'.151 S	151° 03'.206 E
	beacon desig, No16	8° 33'.054 S	151° 03'.181 E
	beacon desig, No17	8° 33'.026 S	151° 03'.407 E
	beacon desig, No18	8° 32'.931 S	151° 03'.743 E
	beacon desig, No19	8° 33'.019 S	151° 03'.764 E
Delete	beacon	8° 33'.18 S	151° 02'.97 E
	topmark	8° 33'.19 S	151° 02'.80 E

674 AUSTRALIA - TORRES STRAIT - Thursday Island - Hovell Bar - Depths
Maritime Safety Queensland

Aus 293 [439/2018]

Replace	depth, 1 ₉ m, with depth, 1 ₇ m	10° 34'.22 S	142° 15'.53 E
---------	---	--------------	---------------

Aus 299 [439/2018]

Insert	depth, 2 ₃ m, and extend contour SE to enclose	10° 34'.170 S	142° 15'.406 E
	depth, 1 ₇ m, and extend contour W to enclose	10° 34'.227 S	142° 15'.502 E
	depth, 1 ₅ m, enclosed by contour	10° 34'.166 S	142° 15'.744 E
Delete	depth, 3 ₇ m	10° 34'.17 S	142° 15'.42 E
	depth, 1 ₉ m	10° 34'.22 S	142° 15'.53 E

675 AUSTRALIA - WESTERN AUSTRALIA - Broome - Escape Rocks - Depths
Australian Hydrographic Office

Aus 50 [603/2017]

Insert	accompanying block	17° 58'.935 S	122° 08'.952 E
--------	--------------------	---------------	----------------

676 INDIAN OCEAN - Christmas Island - Flying Fish Cove - Submarine cable
33Below

Aus 920 (Flying Fish Cove) [1019/2017]

Insert	submarine cable, between	10° 25'.790 S	105° 40'.176 E
		10° 25'.745 S	105° 40'.152 E
	submarine cable, between	10° 25'.742 S	105° 40'.149 E
		10° 25'.679 S	105° 40'.104 E
		10° 25'.573 S	105° 40'.040 E
		10° 25'.405 S	105° 39'.969 E
		10° 25'.146 S	105° 39'.821 E
		10° 25'.094 S	105° 39'.782 E
		10° 25'.059 S	105° 39'.743 E
		10° 24'.194 S	105° 38'.432 E

677 AUSTRALIA - SOUTH AUSTRALIA - Head of Great Australian Bight - Marine parks
Australian Hydrographic Office

Aus 341 [203/2018]

Insert	accompanying block	31° 37'.67 S	131° 21'.94 E
	accompanying note	31° 57'.00 S	134° 05'.00 E

678 AUSTRALIA - VICTORIA - Corner Inlet - Port Albert Entrance - Depths

Gippsland Ports

Aus 181 [569/2018]

Insert	depth, 1_4m , and extend contour W to enclose	38° 44'.79 S	146° 40'.77 E
	depth, 0_1m , enclosed by contour	38° 44'.42 S	146° 41'.65 E
	depth, 0_8m , and extend contour NW to enclose	38° 44'.28 S	146° 41'.96 E

Delete	depth, 1m	38° 44'.4 S	146° 42'.0 E
--------	-----------	-------------	--------------

Aus 182 (Approaches to Port Albert) [625/2018]

Insert	depth, 1_4m , enclosed by contour	38° 44'.785 S	146° 40'.771 E
	depth, 0_1m , enclosed by contour	38° 44'.422 S	146° 41'.654 E
	depth, 0_8m , enclosed by contour	38° 44'.276 S	146° 41'.963 E
	depth, 0_9m , and extend contour NW to enclose	38° 44'.363 S	146° 41'.732 E
	depth, 1_6m , and extend contour N to enclose	38° 43'.890 S	146° 41'.983 E

Delete	depth, 2_9m	38° 44'.36 S	146° 41'.73 E
	depth, 2_9m	38° 44'.24 S	146° 41'.95 E
	depth, 1_6m	38° 43'.92 S	146° 41'.98 E

679 AUSTRALIA - VICTORIA - Phillip Island - Swan Bay - Wreck

M Sackmann

Aus 150 [572/2018]

Insert	stranded wreck	38° 28'.63 S	145° 19'.15 E
--------	----------------	--------------	---------------

680(T)/2018 AUSTRALIA - NEW SOUTH WALES - Newcastle - Live firing completed

Former Notice - 575(T)/2018 is cancelled
Department of Defence

Cancel this notice on receipt.

Chart formerly affected - Aus 489 - Aus 809 - Aus 810 - Aus 4643 (INT 643)

681(T)/2018 AUSTRALIA - NEW SOUTH WALES - Newcastle to Cape Hawke - Obstructions

Former Notice - 490(T)/2018 is cancelled
Australian Maritime Safety Authority

Cancel this notice on receipt.

Chart formerly affected - Aus 207 - Aus 209 - Aus 219 - Aus 489 - Aus 809 - Aus 810 - Aus 4643 (INT 643)

682(T)/2018 AUSTRALIA - NEW SOUTH WALES - Nobbys Head - Obstructions eastwards

Australian Maritime Safety Authority

Due to shipping containers lost overboard, obstructions on the seabed are likely to exist in position 32° 59'.36 S 152° 01'.97 E and in the areas bounded by the following positions:

33° 00'.25 S 152° 03'.05 E

33° 00'.70 S 152° 04'.41 E

33° 01'.66 S 152° 04'.44 E

33° 01'.88 S 152° 03'.41 E

and

32° 57'.56 S 152° 03'.68 E

32° 57'.97 S 152° 04'.77 E

32° 59'.23 S 152° 03'.70 E

32° 58'.33 S 152° 02'.99 E

and

32° 55'.38 S 152° 02'.80 E

32° 56'.66 S 152° 03'.81 E

32° 56'.72 S 152° 03'.26 E

32° 56'.09 S 152° 02'.20 E.

Mariners are advised to navigate with caution in the area.

Chart temporarily affected - Aus 489 - Aus 809

683(T)/2018 AUSTRALIA - QUEENSLAND - Cairns - Dredging operations

Maritime Safety Queensland

The dredge, *Brisbane*, and support vessels are conducting dredging operations in the Port of Cairns.

Mariners are advised to navigate with caution in the area.

Chart temporarily affected - Aus 262 - Aus 263 - Aus 830

684(T)/2018 AUSTRALIA - QUEENSLAND - Hay Point - Diving operations

Maritime Safety Queensland Notice 277/2018

Vessel *Lisa Lee* is conducting diving operations in the vicinity of position 21° 15'.00 S 149° 18'.30 E.

Vessels will display appropriate colours and shapes and monitor VHF Ch 10 & 16.

Mariners are advised to navigate with caution in the area.

Chart temporarily affected - Aus 249 - Aus 250

685(T)/2018 AUSTRALIA - QUEENSLAND - Karumba - Shoaling

Maritime Safety Queensland Notice 283/2018

Shoaling exists in the entrance channel between beacon No8 (17° 26'.36 S 140° 44'.73 E) and beacon No10 (17° 26'.65 S 140° 45'.32 E).

Mariners are advised to navigate with caution in the area.

Chart temporarily affected - Aus 6

686(T)/2018 AUSTRALIA - QUEENSLAND - Moreton Bay - Brisbane River - South Brisbane Reach - Survey operations

Maritime Safety Queensland Notice 291(T)/2018

Survey operations are in progress between Goodwill Bridge (27° 28'.82 S 153° 01'.63 E) and Victoria Bridge (27° 28'.34 S 153° 01'.27 E).

Barge *MDT 121* and support vessel *Bhagwan Jackal* are on site and will display appropriate lights and shapes and will monitor VHF Ch 13 and 16.

Mariners are advised to navigate with caution in the area.

Chart temporarily affected - Aus 238

687(T)/2018 AUSTRALIA - QUEENSLAND - Moreton Bay - Rainbow Channel - Shoaling

Maritime Safety Queensland Notice 279(T)/2018

Shoaling has been reported in Rainbow Channel between beacon Wanga Wallen North (27° 25'.35 S 153° 25'.10 E) and beacon Wanga Wallen South (27° 27'.17 S 153° 24'.97 E).

Mariners are advised to navigate with caution in the area.

Chart temporarily affected - Aus 236

688(T)/2018 AUSTRALIA - QUEENSLAND - Moreton Bay - Juno Point - Harbour works northwestwards

Maritime Safety Queensland Notice 296(T)/2018

Works associated with the upgrade of the airport runway are in progress in an area bounded by the following positions:

27° 21'.19 S 153° 07'.33 E
 27° 20'.88 S 153° 07'.53 E
 27° 20'.96 S 153° 07'.70 E
 27° 21'.27 S 153° 07'.51 E.

Construction area will be marked by special light buoys, *Fl.Y.4s*.

Mariners are advised to navigate with caution in the area.

Chart temporarily affected - Aus 236

689(T)/2018 AUSTRALIA - QUEENSLAND - Moreton Bay - Dredging

Maritime Safety Queensland Notice 280(T)/2018

The Vessel, *Nile River*, is conducting dredging operations between M3 Beacon (27° 05'.60 S 153° 18'.40 E) and S1 Beacon (27° 02'.88 S 153° 15'.99 E).

Mariners are advised to navigate with caution in the area.

Chart temporarily affected - Aus 235 - Aus 236

690(T)/2018 AUSTRALIA - CORAL SEA - Mellish Reef - Light buoy off station northwestwards

Australian Bureau of Meteorology

The special light buoy, *Fl. Y. 2s* (14°49'.40 S 153°29'.50 E) is off station.

Chart temporarily affected - Aus 4604 (INT 604) - Aus 4621 (INT 621)

691(T)/2018 PAPUA NEW GUINEA - Vitiaz Strait - Lights unlit

National Maritime Safety Authority PNG Notice 1/2018,2/2018,3/2018,4/2018

The following lights are unlit;

<i>Position</i>	<i>Remarks</i>
5° 53'.27 S 148° 08'.70 E	<i>Fl. R. 2s</i>
4° 50'.89 S 145° 48'.33 E	<i>Fl(2) 6s 22m 10M</i>
2° 39'.45 S 150° 37'.68 E	<i>Fl(2) G. 8s 7m 3M</i>

Chart temporarily affected - Aus 387 - Aus 388 - Aus 543 - Aus 666 - Aus 673

692(T)/2018 AUSTRALIA - NORTHERN TERRITORY - Darwin - Preston Point - Light restored

Former Notice - 416(T)/2018 is cancelled

Department of Infrastructure, Planning and Logistics NT Notice 041(T)/2018

Cancel this notice on receipt.

Chart formerly affected - Aus 26 - Aus 28

693(T)/2018 AUSTRALIA - TIMOR SEA - Seismic survey northwards

Former Notice - 584(T)/2018 is cancelled

Santos Ltd

Cancel this notice on receipt.

Chart formerly affected - Aus 316 - Aus 318 - Aus 725 - Aus 726 - Aus 4603 (INT 603) - Aus 4721 (INT 721)

694(T)/2018 TIMOR-LESTE - Sahul Banks - Drill rig

MODU *Noble Tom Prosser*

Drill rig, *Noble Tom Prosser*, is conducting drilling operations in position 11° 04'.35 S 126° 34'.61 E.

Chart temporarily affected - Aus 312 - Aus 4721 (INT 721)

695(T)/2018 AUSTRALIA - WESTERN AUSTRALIA - Barrow Island - Well abandonment works westwards

Quadrant Energy

Drill rig *Enasco 107* is conducting a well abandonment program at the wells in positions 20° 44'.00 S 114° 58'.44 E and 20° 43'.80 S 114° 59'.40 E.

Mariners are advised to navigate with caution in the area.

Chart temporarily affected - Aus 328

696(T)/2018 AUSTRALIA - WESTERN AUSTRALIA - Carnarvon - Dredging operations

Department of Transport WA Notice 107/2018

The dredge, *Community Spirit*, is conducting dredging operations in the entrance channel (24° 54'.33 S 113° 38'.49 E)

A floating pipeline, marked by special light buoys, is connected to the dredge.

The dredge will display appropriate lights and shapes.

The dredge will monitor VHF Ch 16.

Mariners are advised to navigate with caution in the area.

Chart temporarily affected - Aus 73**697(T)/2018 AUSTRALIA - WESTERN AUSTRALIA - Exmouth - Mooring buoy recovered**

Former Notice - 372(T)/2018 is cancelled

Department of Transport WA

Cancel this notice on receipt.

Chart formerly affected - Aus 744 - Aus 745**698(T)/2018 AUSTRALIA - WESTERN AUSTRALIA - Geraldton - Lights unreliable**

Mid West Ports Notice 02/2018

The following lights are unreliable:

<i>Position</i>	<i>Remarks</i>
28° 45'.47 S 114° 33'.93 E	Oc.R.3s
28° 45'.58 S 114° 33'.97 E	Oc.G.3s
28° 45'.44 S 114° 34'.42 E	Fl.G.3s 4M
28° 45'.33 S 114° 34'.38 E	Fl.R.3s 4M
28° 45'.37 S 114° 34'.68 E	Fl.G.3s 4M
28° 45'.26 S 114° 34'.63 E	Fl.R.3s 4M
28° 42'.69 S 114° 34'.47 E	Oc.R.5s

Chart temporarily affected - Aus 81 - Aus 751**699(T)/2018 AUSTRALIA - WESTERN AUSTRALIA - Varanus Island - Navaid replacement works**

Department of Transport WA Notice 109/2018

Navaid replacement works are in progress at the light buoy Q(3)R.7s in position 20° 37'.93 S 115° 36'.20 E and the buoy in position 20° 38'.03 S 115° 36'.57 E.

Vessel *Mermaid Vision* is on site and will display appropriate lights and shapes and monitor VHF Ch 16.

Mariners are advised to navigate with caution in the area.

Chart temporarily affected - Aus 65**700(T)/2018 AUSTRALIA - SOUTH AUSTRALIA - Adelaide - Bridge works**

Department of Planning, Transport and Infrastructure SA 22/2018

Works on Birkenhead Bridge (34° 50'.53 S 138° 30'.10 E) are in progress.

The raising of the bridge will be prohibited during the works.

Mariners are advised to navigate with caution in the area.

Chart temporarily affected - Aus 130 - Aus 137

701(T)/2018 AUSTRALIA - VICTORIA - Cape Conran - Well abandonment works southwards

Cooper Energy

Drill rig *Ocean Monarch* and support vessels are conducting a well abandonment program within 1.1M of the three wells located in the vicinity of position 38° 17'.8 S 148° 43'.3. E.

Mariners are advised to navigate with caution in the area.

Chart temporarily affected - Aus 357 - Aus 487

702(T)/2018 AUSTRALIA - VICTORIA - Port Phillip - Wyndham Marina - Light restored

Former Notice - 341(T)/2018 is cancelled

Parks Victoria Notice 232(T)/2018

Cancel this notice on receipt.

Chart formerly affected - Aus 155

703(T)/2018 AUSTRALIA - VICTORIA - Western Port - North Arm - Hastings Bight - Light beacon unlit

Parks Victoria Notice 244(T)/2018

The port lateral light beacon, *Fl.R.2s No2* (38° 19'.55 S 145° 13'.21 E), is unlit.

Chart temporarily affected - Aus 150 - Aus 151 - Aus 152

704(T)/2018 AUSTRALIA - TASMANIA - D'Entrecasteaux Channel - Soldiers Point - Marine farm works complete

Former Notice - 888(T)/2017 is cancelled

Marine and Safety Tasmania Notice M129/2018

Cancel this notice on receipt.

Chart formerly affected - Aus 173

705(T)/2018 AUSTRALIA - TASMANIA - D'entrecasteaux Channel - Dennes Point - Harbour Works

Marine and Safety Tasmania

Works are in progress at Dennes Point Jetty (43° 03'.99 S 147° 21'.03 E) and it will be temporarily closed.

Chart temporarily affected - Aus 174

HYDROGRAPHIC REPORTS

<i>Locality</i>	<i>Report</i>	<i>Ship/Authority</i>	<i>Observer</i>
VIC- Phillip Island	Wreck		S Sackmann

III

NAVIGATION WARNINGS

The Australian Hydrographic Office will no longer compile Section III of the Australian Notices to Mariners. For the most up to date navigation warnings please refer to:

AMSA Navigation Warnings

<http://amsa.gov.au/search-and-rescue/distress-and-safety-comms/msi/msi-email/index.asp>

New Zealand Notices to Mariners (Navarea XIV warnings)

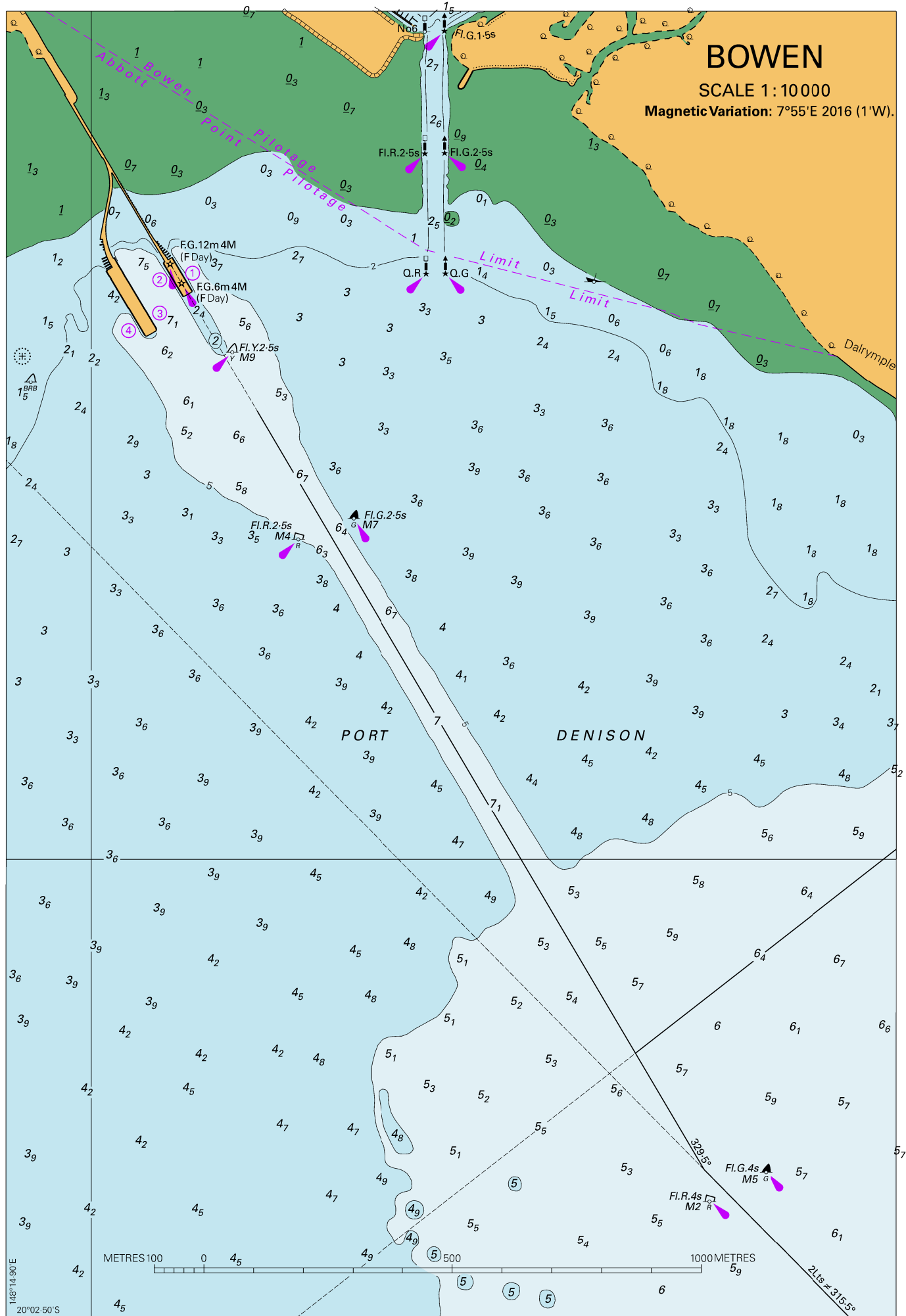
<http://www.linz.govt.nz/sea/maritime-safety/notices-mariners>

To accompany Australian Notice to Mariners 677/2018

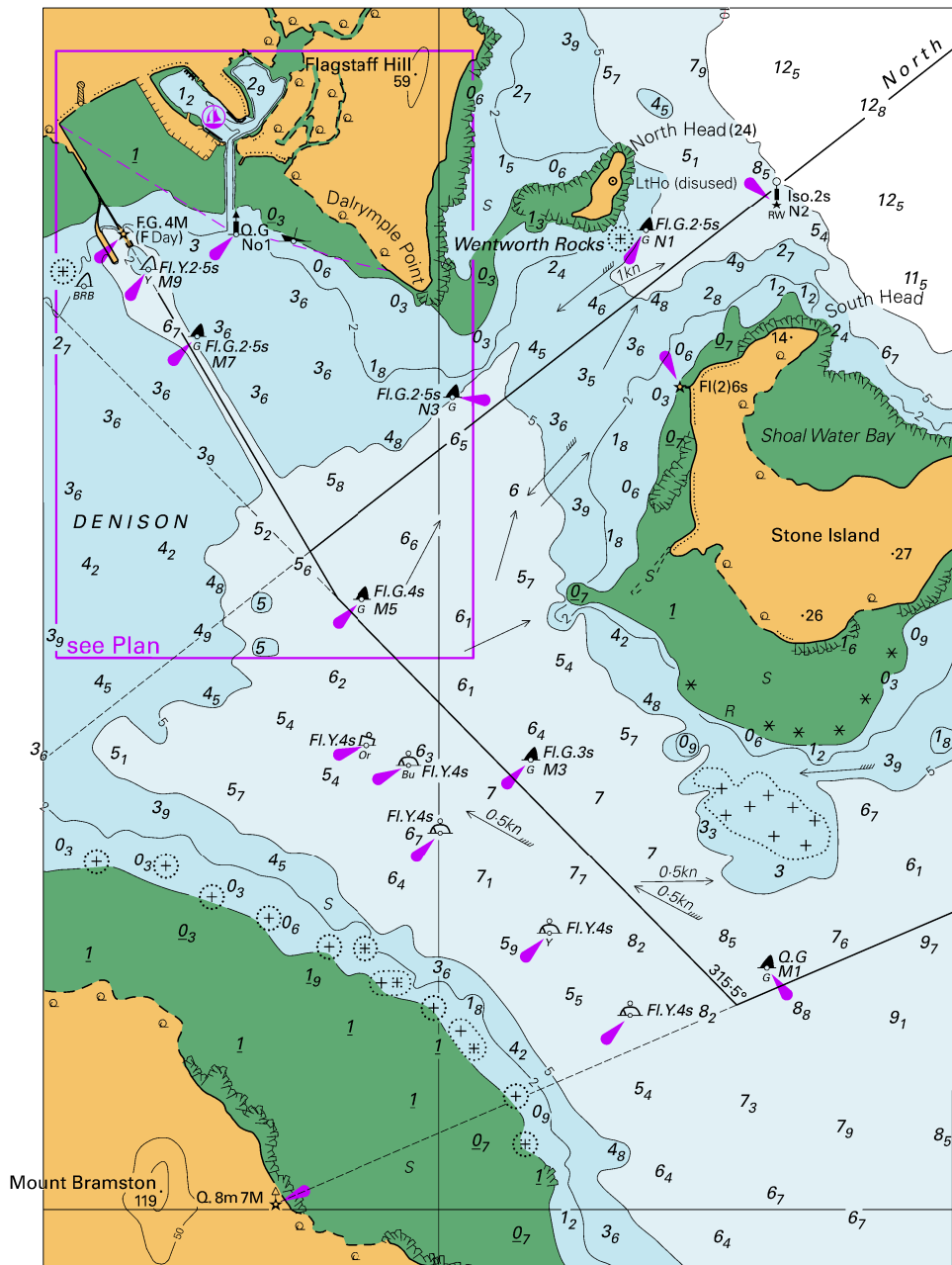
ENVIRONMENTALLY SENSITIVE SEA AREA
(ESSA)

Areas of this chart are Environmentally Sensitive Sea Areas (ESSA). Areas within this marine protected area have restrictions on access and activities. For details see Seafarers Handbook for Australian Waters AHP 20.

Note for chart Aus 341



To accompany Australian Notice to Mariners 665/2018

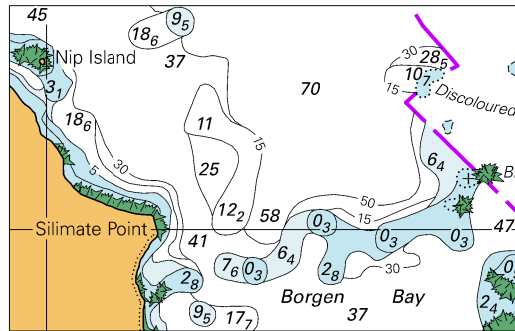


Block A for Chart Aus 268

© Commonwealth of Australia 2018

(120.9 x 168.0 mm)

To accompany Australian Notice to Mariners 672/2018

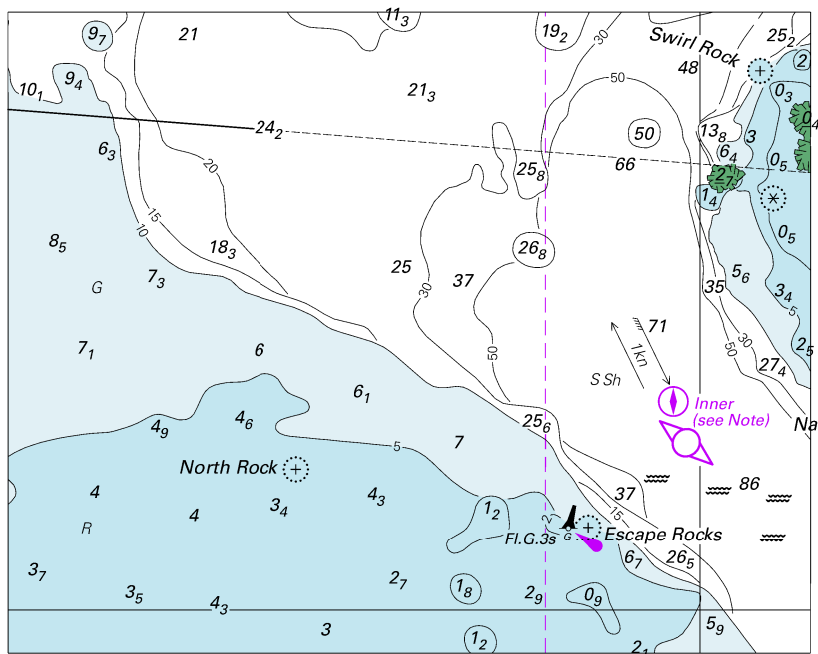


© Commonwealth of Australia 2018

Block for Chart Aus 548

(68.0 x 42.9mm)

To accompany Australian Notice to Mariners 675/2018

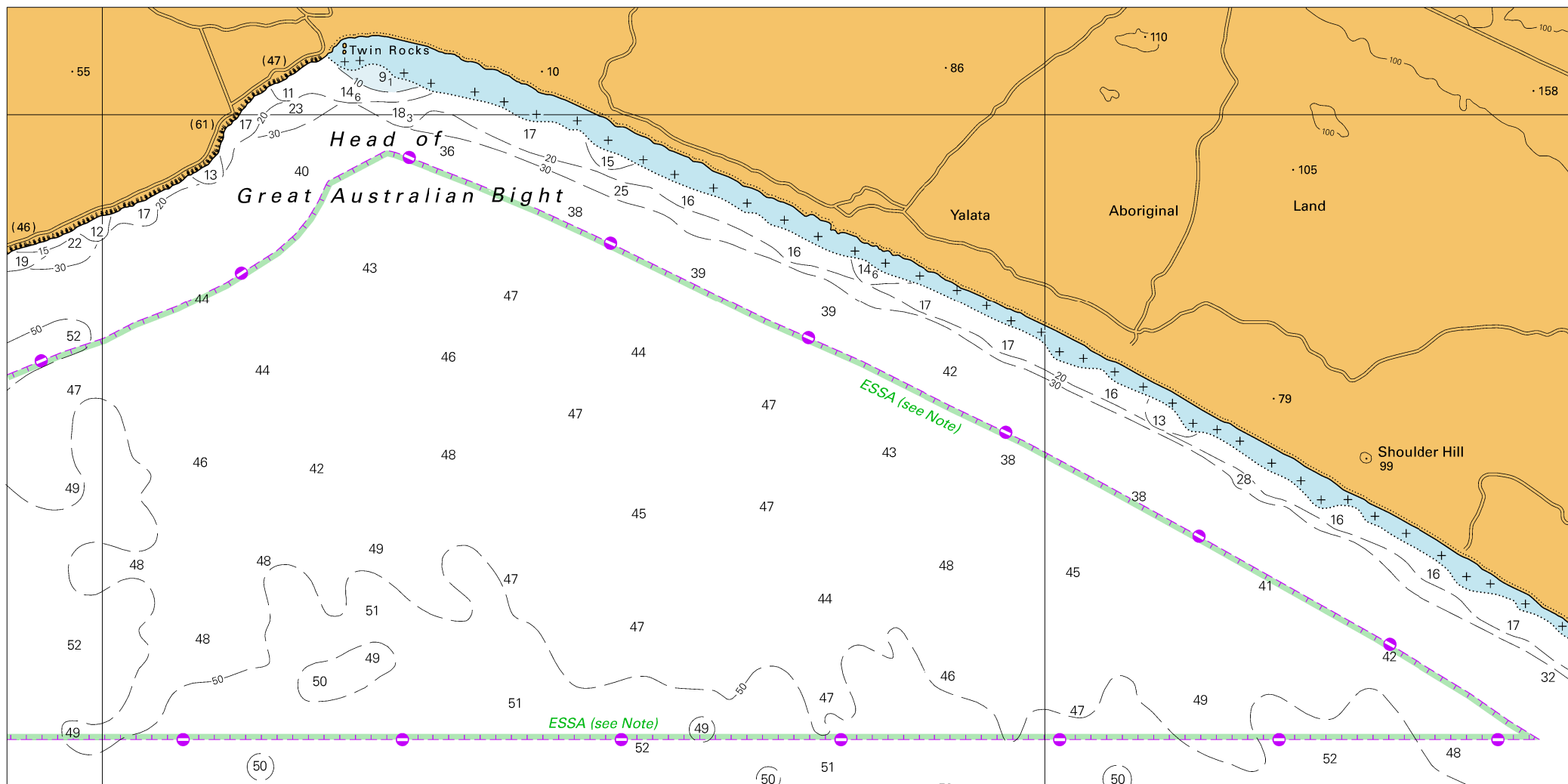


© Commonwealth of Australia 2018

Block for Chart Aus 50

(106.1 x 84.8mm)

To accompany Australian Notice to Mariners 677/2018



Block for Chart Aus 341

© Commonwealth of Australia 2018

(274.8 x 136.3mm)