



24 August 2018

Edition 17

AUSTRALIAN NOTICES TO MARINERS

Notices 706 - 761

Published fortnightly by the Australian Hydrographic Office



Australian Notices to Mariners are the authority for correcting charts and publications published by the Australian Hydrographic Office covering Australia, Papua New Guinea, Solomon Islands, Australian Antarctic Territory and Timor-Leste.

Commodore F.T. FREEMAN RAN
Hydrographer of Australia

SECTIONS.

- I. **Australian Notices to Mariners, including blocks and notes.**
- II. **Hydrographic Reports.**
- III. **Navigational Warnings.**

SUPPLEMENTS.

- I. **Tracings**
- II. **Cumulative List of Australian Notices to Mariners.**
- III. **Cumulative List of Temporary and Preliminary Australian Notices to Mariners.**
- IV. **Temporary and Preliminary Notices in force.**
- V. **Amendments to Admiralty List of Lights and Fog Signals (Vol K), Radio Signals (NP 281(2), 282, 283(2), 285, 286(4)) and Sailing Directions (NP 9, 13, 14, 15, 33, 34, 35, 36, 39, 44, 51, 60, 61, 62, 100, 136).**

© Commonwealth of Australia 2018

This work is copyright. Apart from any use permitted under the Copyright Act 1968, no part may be reproduced by any process, adapted, communicated or commercially exploited without prior written permission from The Commonwealth represented by the Australian Hydrographic Office.

IMPORTANT NOTICE

This edition of Notices to Mariners includes all significant information affecting AHO products which the AHO has become aware of since the last edition. All reasonable efforts have been made to ensure the accuracy and completeness of the information, including third party information, on which these updates are based. The AHO regards third parties from which it receives information as reliable, however the AHO cannot verify all such information and errors may therefore exist. The AHO does not accept liability for errors in third party information.

GENERAL INSTRUCTIONS

The substance of these notices should be inserted on the charts affected.

Bearings are referred to the true compass and are reckoned clockwise from North; those relating to lights are given as seen by an observer from seaward.

Positions quoted in notices relate to WGS84 which is the horizontal datum for all charts produced by the Australian Hydrographic Office.

The range quoted for a light is its nominal range.

Depths are with reference to the chart datum of each chart. Heights are above mean high water springs or mean higher high water, as appropriate.

The capital letter (P) or (T) after the number of any notice denotes a preliminary or temporary notice respectively, which are contained separately at the end of the permanent notices.

REPORTING OF DANGERS

Mariners are particularly requested to notify the AUSTRALIAN HYDROGRAPHIC OFFICE, Locked Bag 8801 Wollongong, NSW 2500 (Fax 02-4223 6599, e-mail datacentre@hydro.gov.au or, alternatively by filling in and submitting the [Hydrographic Notes](#) forms located on the web site – www.hydro.gov.au), immediately on the discovery of new dangers or suspected dangers to navigation. For changes or defects in aids to navigation notify AusSAR (Fax 02-6230 6868 or email rccaus@amsa.gov.au).

AUTHORISED USE

Copies of Australian notices are available free of charge from the Australian Hydrographic Office (AHO) website (www.hydro.gov.au) and through the eNotices (email) service (www.hydro.gov.au/enotices/enotices.htm).

Individual Notices may be copied for the purpose of inserting Notice substance on official charts and publications. Paper copies may be printed by chart agents and distributed to customers on a cost recovery basis. Participating chart agents are listed on the AHO website as providing a 'Paper Notices to Mariners' service (www.hydro.gov.au/webapps/jsp/agents/agents-list.jsp). Copies of the notices may not be sold for profit without prior written agreement.

NUMERICAL INDEX OF NOTICES TO MARINERS

Edition No 17

Notices	Aus Chart, INT Chart, ENC Cell, AHP, BA Pubs
706	Aus 136
707	Aus 132, 320, 323
708	Aus 222
709	Aus 202
710	Aus 194
711	Aus 237, 238
712	Aus 230
713	Aus 508, 509
714	Aus 522, 523, 643, 4620, 4622, INT 620, 622
715	Aus 637
716	Aus 377, 840
717	Aus 718
718	Aus 65, 67
719	Aus 73
720	Aus 328, 329, 744, 745
721	Aus 181, 182
722	Aus 143, 153, 157
723	Aus 144, 158
724	Aus 169, 766
725	Aus 174
726	Aus 173, 174
727(T)	Aus 238
728(P)	Aus 270
729(T)	Aus 249, 250
730(T)	Aus 249, 250
731(T)	Aus 236
732(T)	Aus 235, 236
733(T)	Aus 252, 253, 269
734(T)	Aus 256, 827
735(T)	Aus 256, 827
736(T)	Aus 260, 261, 367, 822
737(T)	Aus 260, 367, 822
738(T)	Aus 316, 318, 725, 726, 4721, INT 721
739(T)	Aus 64, 69, 743, 744
740(T)	Aus 328
741(T)	Aus 326, 4722, INT 722
742(T)	Aus 58
743(T)	Aus 81, 751
744(T)	Aus 116
745(T)	Aus 744
746(T)	Aus 328, 329, 744
747(T)	Aus 328, 329, 744, 745
748(T)	Aus 328, 329, 4723, 4725, INT 723, 725
749(T)	Aus 56
750(T)	Aus 754
751(T)	Aus 112
752(T)	Aus 327, 742
753(T)	Aus 4708, 4723, INT 708, 723
754(T)	Aus 125
755(T)	Aus 120, 122
756(T)	Aus 357, 487, 4644, INT 644
757(T)	Aus 357, 487
758(T)	Aus 143, 157
759(T)	Aus 144
760(T)	Aus 795, 796
761(T)	SLB 104, 304

NUMERICAL INDEX OF CHARTS AFFECTED

Edition No 17

Aus Chart	Notices
Aus 56	749(T)
Aus 58	742(T)
Aus 64	739(T)
Aus 65	718
Aus 67	718
Aus 69	739(T)
Aus 73	719
Aus 81	743(T)
Aus 112	751(T)
Aus 116	744(T)
Aus 120	755(T)
Aus 122	755(T)
Aus 125	754(T)
Aus 132	707
Aus 136	706
Aus 143	722, 758(T)
Aus 144	723, 759(T)
Aus 153	722
Aus 157	722, 758(T)
Aus 158	723
Aus 169	724
Aus 173	726
Aus 174	725, 726
Aus 181	721
Aus 182	721
Aus 194	710
Aus 202	709
Aus 222	708
Aus 230	712
Aus 235	732(T)
Aus 236	731(T), 732(T)
Aus 237	711
Aus 238	711, 727(T)
Aus 249	729(T), 730(T)
Aus 250	729(T), 730(T)
Aus 252	733(T)
Aus 253	733(T)
Aus 256	734(T), 735(T)
Aus 260	736(T), 737(T)
Aus 261	736(T)
Aus 269	733(T)
Aus 270	728(P)
Aus 316	738(T)
Aus 318	738(T)
Aus 320	707
Aus 323	707
Aus 326	741(T)
Aus 327	752(T)
Aus 328	720, 740(T), 746(T), 747(T), 748(T)
Aus 329	720, 746(T), 747(T), 748(T)
Aus 357	756(T), 757(T)
Aus 367	736(T), 737(T)
Aus 377	716
Aus 487	756(T), 757(T)

Aus Chart	Notices
Aus 508	713
Aus 509	713
Aus 522	714
Aus 523	714
Aus 637	715
Aus 643	714
Aus 718	717
Aus 725	738(T)
Aus 726	738(T)
Aus 742	752(T)
Aus 743	739(T)
Aus 744	720, 739(T), 745(T), 746(T), 747(T)
Aus 745	720, 747(T)
Aus 751	743(T)
Aus 754	750(T)
Aus 766	724
Aus 795	760(T)
Aus 796	760(T)
Aus 822	736(T), 737(T)
Aus 827	734(T), 735(T)
Aus 840	716
Aus 4620	714
Aus 4622	714
Aus 4644	756(T)
Aus 4708	753(T)
Aus 4721	738(T)
Aus 4722	741(T)
Aus 4723	748(T), 753(T)
Aus 4725	748(T)
SLB 104	761(T)
SLB 304	761(T)

INT Chart	Notices
INT 620	714
INT 622	714
INT 644	756(T)
INT 708	753(T)
INT 721	738(T)
INT 722	741(T)
INT 723	748(T), 753(T)
INT 725	748(T)

706 AUSTRALIA - Products - New Charts and New Editions to be published shortly
Australian Hydrographic Service

New Charts to be published shortly

<i>Chart</i>	<i>Title</i>	<i>Scale</i>	<i>Expected Publication Date</i>	<i>Remarks</i>
NIL				

New Editions to be published shortly

<i>Chart</i>	<i>Title</i>	<i>Scale</i>	<i>Expected Publication Date</i>	<i>Remarks</i>
AUS 136	Australia - South Coast - South Australia - Approaches to Whyalla and Port Pirie Plans: Approaches to Port Pirie Port Pirie	1:75 000 1:25 000 1:7 500	7 September 2018	New Edition to incorporate latest bathymetric data.

707 AUSTRALIA - Products - New Charts, New Editions, Withdrawn Charts
Australian Hydrographic Office

New Charts

<i>Chart</i>	<i>Title and Geographical limits</i>	<i>Scale</i>	<i>Publication Date</i>	<i>Remarks</i>
NIL				

New Electronic Navigation Chart (Aus ENC)

<i>Cell Name</i>	<i>Title</i>	<i>Publication Date</i>	<i>Remarks</i>
NIL			

New Editions and Withdrawn Charts

<i>Chart</i>	<i>Title</i>	<i>Scale</i>	<i>Publication Date</i>	<i>Remarks</i>
AUS 132 Edition 2	Australia - South Coast - South Australia - Approaches to Port Augusta Plan: Snapper Reach to Port Augusta Port Augusta Wharves	1:37 500 1:20 000 1:7 500	24 August 2018	New Edition to incorporate latest bathymetric data. Chart Aus 132 Edition 1 dated 2 November 2012 is now superseded and must be withdrawn from use.
AUS 320 Edition 3	Australia - North West Coast - Western Australia - Browse Island to Adele Island including Bonaparte Archipelago	1:300 000	24 August 2018	New Edition to incorporate latest bathymetric data. Chart Aus 320 Edition 2 dated 20 November 2009 is now superseded and must be withdrawn from use.
AUS 323 Edition 2	Australia - North West Coast - Western Australia - Adele Island to Lacepede Islands including King Sound	1:300 000	24 August 2018	New Edition to incorporate latest bathymetric data. Chart Aus 323 Edition 1 dated 3 November 1995 is now superseded and must be withdrawn from use.

Chart permanently withdrawn

Charts listed above as withdrawn no longer meet chart carriage requirements and should be marked as "superseded" and replaced with the new chart/ new edition listed prior to passage through the area covered by the new chart.

When placing orders with a chart agent between notice of forthcoming edition and its publication, mariners should advise whether their order pertains to the current edition or the new edition.

For further details refer to the AHO website at www.hydro.gov.au for new edition and new chart stock arrival information.

708 AUSTRALIA - NEW SOUTH WALES - Clarence River - North Channel - Contours

P Sutton

Aus 222 [1055/2017]

Insert	accompanying block	29° 25'.0 S	153° 20'.8 E
--------	--------------------	-------------	--------------

709 AUSTRALIA - NEW SOUTH WALES - Port Jackson - Shell Cove to Little Sirius Cove - Wrecks

Port Authority of New South Wales

Aus 202 [603/2018]

Insert	depth, 6 ₁ m, enclosed by danger circle with legend, <i>Wk</i>	33° 50'.551 S	151° 13'.545 E
	depth, 3 ₈ m, enclosed by danger circle with legend, <i>Wk</i>	33° 50'.570 S	151° 13'.583 E
	depth, 7 ₄ m, enclosed by danger circle with legend, <i>Wk</i>	33° 50'.614 S	151° 14'.104 E
	depth, 5m, enclosed by danger circle with legend, <i>Wk</i>	33° 50'.599 S	151° 14'.204 E
	depth, 6m, enclosed by danger circle with legend, <i>Wk</i>	33° 50'.486 S	151° 14'.190 E

Delete	depth, 3 ₇ m	33° 50'.58 S	151° 13'.59 E
--------	-------------------------	--------------	---------------

710 AUSTRALIA - NEW SOUTH WALES - Port Kembla - Anchoring prohibited limit; nav aids

Australian Hydrographic Office

Aus 194 [NE 10/8/2018]

Insert	anchorage prohibited limit, between	34° 27'.790 S	150° 54'.449 E
		34° 26'.680 S	150° 55'.316 E

Move	north cardinal AIS	34° 28'.600 S	150° 56'.050 E
	to	34° 28'.587 S	150° 56'.065 E
	south cardinal AIS	34° 27'.783 S	150° 55'.667 E
	to	34° 27'.785 S	150° 55'.677 E

Delete	anchoring prohibited limit, between	34° 27'.79 S	150° 54'.45 E
		34° 26'.68 S	150° 55'.22 E

711 AUSTRALIA - QUEENSLAND - Brisbane River - Chart note

Maritime Safety Queensland Notice 306(T)/2018

Aus 237 [666/2018]

Insert	accompanying note	27° 22'.9 S	153° 08'.2 E
	magenta legend, (<i>see Note</i>)	27° 24'.560 S	153° 08'.907 E
	magenta legend, (<i>see Note</i>)	27° 24'.031 S	153° 09'.603 E

Aus 238 [666/2018]

Insert	accompanying note	27° 25'.5 S	153° 05'.0 E
	magenta legend, (<i>see Note</i>)	27° 26'.438 S	153° 06'.633 E
	magenta legend, (<i>see Note</i>)	27° 24'.560 S	153° 08'.907 E

712 AUSTRALIA - QUEENSLAND - Gold Coast Seaway - Depths

Maritime Safety Queensland

Aus 230 [668/2018]

Insert	depth, 4 ₁ m, and extend contour E to enclose	27° 55'.782 S	153° 25'.225 E
	depth, 2 ₁ m	27° 55'.772 S	153° 25'.060 E

Delete	depth, 2 ₆ m	27° 55'.76 S	153° 25'.06 E
	depth, 5 ₄ m	27° 55'.76 S	153° 25'.23 E

713 PAPUA NEW GUINEA - Basilaki Island - Depths

LADS Flight

Aus 508 [1199/2016]

Insert	depth, 4 ₇ m, enclosed by contour	10° 32'.32 S	150° 57'.69 E
	depth, 3 ₉ m, and extend contour NE to enclose	10° 33'.01 S	151° 03'.06 E

Delete	depth, 3 ₂ m	10° 33'.2 S	151° 02'.8 E
--------	-------------------------	-------------	--------------

Aus 509 [316/2018]

Insert	depth, 3 ₉ m, and extend contour NE to enclose	10° 33'.01 S	151° 03'.06 E
	depth, 5 ₅ m, enclosed by contour	10° 35'.19 S	151° 12'.61 E

Replace	depth, 13 ₈ m, with depth, 6 ₉ m, and extend contour NW to enclose	10° 36'.8 S	151° 16'.4 E
	depth, 28 ₃ m, with depth, 14 ₇ m	10° 36'.9 S	151° 19'.2 E
	depth, 25m, with depth, 4 ₇ m, enclosed by contour	10° 34'.9 S	151° 12'.2 E

Delete	depth, 3 ₂ m	10° 33'.2 S	151° 02'.8 E
--------	-------------------------	-------------	--------------

714 PAPUA NEW GUINEA - Lababia Island - Depths

Australian Offshore Solutions

Aus 522 [520/2018]

Insert	depth, 5 ₃ m, enclosed by contour with legend <i>Rep (2018)</i>	7° 17'.40 S	147° 12'.48 E
	contour value, 100	7° 17'.44 S	147° 12'.03 E

Delete	depth, 73m	7° 17'.3 S	147° 12'.3 E
--------	------------	------------	--------------

Aus 523 [520/2018]

Insert	depth, 7 ₅ m, enclosed by contour with legend <i>Rep (2018)</i>	7° 09'.74 S	147° 08'.46 E
	depth, 5 ₃ m, enclosed by contour with legend <i>Rep (2018)</i>	7° 17'.40 S	147° 12'.48 E
	contour value, 100	7° 17'.44 S	147° 12'.03 E

Delete	depth, 73m	7° 17'.3 S	147° 12'.3 E
--------	------------	------------	--------------

Aus 643 [520/2018]

Insert	depth, 7 ₅ m, enclosed by contour with legend <i>Rep (2018)</i>	7° 09'.74 S	147° 08'.46 E
--------	--	-------------	---------------

Aus 4620 (INT 620) [558/2018]

Insert	depth, 7 ₅ m, with legend <i>Rep (2018)</i> and extend contour E to enclose	7° 09'.7 S	147° 08'.5 E
--------	--	------------	--------------

Aus 4622 (INT 622) [899/2017]

Insert	depth, 7 ₅ m, with legend <i>Rep (2018)</i> and extend contour E to enclose	7° 09'.7 S	147° 08'.5 E
--------	--	------------	--------------

715 PAPUA NEW GUINEA - Trobriand Islands - Losuia - Beacon

National Maritime Safety Authority PNG

Aus 637 [673/2018]

Delete	beacon	8° 33'.2 S	151° 03'.0 E
--------	--------	------------	--------------

716 AUSTRALIA - TORRES STRAIT - Masig Island - Nav aids; tower; radio mast; landmarks
Department of Defence , Maritime Safety Queensland

Aus 377 [957/2016]

Insert	tower with legend, (R Lts)	9° 45'.22 S	143° 23'.99 E
Delete	radio mast and legend (100)	9° 45'.0 S	143° 25'.0 E
	light beacon	9° 44'.9 S	143° 24'.1 E

Aus 840 [823/2017]

Insert	tower with legend, (R Lts)	9° 45'.22 S	143° 23'.99 E
Replace	light beacon with starboard lateral conical buoy, without topmark	9° 44'.9 S	143° 24'.1 E
Delete	radio mast and legend (100)	9° 45'.0 S	143° 25'.0 E
	building	9° 44'.9 S	143° 24'.8 E
	building	9° 45'.0 S	143° 24'.8 E
	building	9° 45'.1 S	143° 24'.9 E

717 AUSTRALIA - NORTHERN TERRITORY - Entrance Island - Depths
HMAS *Melville*

Aus 718 [56/2018]

Insert	accompanying block	11° 55'.5 S	134° 11'.7 E
--------	--------------------	-------------	--------------

718 AUSTRALIA - WESTERN AUSTRALIA - Barrow Island - Wapet Landing - Nav aids
Chevron Australia

Aus 65 [349/2018]

Replace	light beacon with beacon, without topmark	20° 43'.4 S	115° 29'.1 E
---------	---	-------------	--------------

Aus 67 [647/2017]

Replace	light beacon with beacon, without topmark	20° 43'.48 S	115° 28'.51 E
	light beacon with beacon, without topmark	20° 43'.38 S	115° 29'.06 E
Delete	light	20° 43'.48 S	115° 28'.56 E

719 AUSTRALIA - WESTERN AUSTRALIA - Carnarvon - Depths
Former Notices - 988(T)/2016, 578(P)/2017 are cancelled
Department of Transport WA

Aus 73 (Carnarvon) [1081/2012]

Insert	accompanying block A	24° 54'.2 S	113° 38'.6 E
	accompanying block B	24° 53'.3 S	113° 38'.9 E

720 AUSTRALIA - WESTERN AUSTRALIA - Exmouth - Artificial reef
Subcon

Aus 328 [563/2018]

Insert	fish haven with minimum depth, 10 _g m, centred on	21° 54'.94 S	114° 11'.24 E
--------	--	--------------	---------------

Aus 329 [563/2018]

Insert	fish haven with minimum depth, 10 _g m, centred on	21° 54'.94 S	114° 11'.24 E
--------	--	--------------	---------------

Aus 744 [729/2017]

Insert	fish haven with minimum depth, 10 _g m, centred on	21° 54'.94 S	114° 11'.24 E
--------	--	--------------	---------------

Aus 745 [1069/2016]

Insert	fish haven with minimum depth, 10 _g m, centred on	21° 54'.94 S	114° 11'.24 E
--------	--	--------------	---------------

721 AUSTRALIA - VICTORIA - Corner Inlet - Port Albert Entrance - Depth

Gippsland Ports

Aus 181 [678/2018]

Replace	depth, 1 ₄ m, with drying height, <u>0</u> ₇ m	38° 44'.8 S	146° 40'.8 E
---------	--	-------------	--------------

Aus 182 (Approaches to Port Albert) [678/2018]

Insert	drying height, <u>0</u> ₇ m, enclosed by contour	38° 44'.759 S	146° 40'.775 E
--------	---	---------------	----------------

722 AUSTRALIA - VICTORIA - Port Phillip - Geelong - Depths

Total Hydrographic

Aus 143 [450/2018]

Insert	drying height, <u>0</u> ₇ m, enclosed by contour	38° 07'.31 S	144° 25'.70 E
	depth, 9 ₇ m, semi enclosed by contour	38° 05'.86 S	144° 35'.62 E

Delete	depth, 11 ₂ m	38° 05'.7 S	144° 35'.7 E
--------	--------------------------	-------------	--------------

Aus 153 [570/2018]

Insert	depth, 7 ₅ m	38° 06'.550 S	144° 22'.587 E
	depth, 8m	38° 06'.677 S	144° 22'.563 E

Delete	depth, 8 ₇ m	38° 06'.54 S	144° 22'.58 E
	depth, 8 ₇ m	38° 06'.70 S	144° 22'.57 E

Aus 157 [570/2018]

Insert	depth, 7 ₅ m	38° 06'.550 S	144° 22'.587 E
	drying height, <u>0</u> ₇ m, enclosed by contour	38° 07'.307 S	144° 25'.701 E
	depth, 9 ₇ m, semi enclosed by contour	38° 05'.862 S	144° 35'.620 E
	depth, 8 ₆ m, and extend contour W to enclose	38° 05'.228 S	144° 36'.103 E

Replace	depth, 0 ₆ m, with drying height, <u>0</u> ₅ m and extend drying contour W to enclose	38° 07'.34 S	144° 25'.17 E
---------	---	--------------	---------------

Delete	depth, 8 ₃ m	38° 06'.45 S	144° 22'.53 E
--------	-------------------------	--------------	---------------

Aus 157 (Point Henry Pier) [570/2018]

Insert	drying height, <u>0</u> ₇ m, enclosed by contour	38° 07'.307 S	144° 25'.701 E
--------	---	---------------	----------------

Delete	depth, 1 ₁ m	38° 07'.30 S	144° 25'.69 E
--------	-------------------------	--------------	---------------

723 AUSTRALIA - VICTORIA - Port Phillip - Point Nepean - Light buoy

Parks Victoria Notice 252/2018

Aus 144 [489/2018]

Move	light buoy	38° 17'.938 S	144° 39'.137 E
	to	38° 17'.953 S	144° 39'.136 E

Aus 158 [489/2018]

Move	light buoy	38° 17'.938 S	144° 39'.137 E
	to	38° 17'.953 S	144° 39'.136 E

724 AUSTRALIA - TASMANIA - Coles Bay - Depths

LADS Flight

Aus 169 (Coles Bay) [67/2018]

Insert	accompanying block	42° 08'.1 S	148° 16'.9 E
--------	--------------------	-------------	--------------

Aus 766 [67/2018]

Replace	depth, 6 ₃ m, with depth, 6 ₇ m	42° 08'.0 S	148° 17'.7 E
---------	---	-------------	--------------

725 AUSTRALIA - TASMANIA - Huon River - Hospital Bay - Mooring buoys

Huon Aquaculture

Aus 174 (Port Huon) [829/2017]

Delete	mooring buoy	43° 09'.72 S	146° 58'.10 E
	mooring buoy	43° 09'.75 S	146° 58'.11 E
	mooring buoy	43° 09'.79 S	146° 58'.15 E
	mooring buoy	43° 09'.86 S	146° 58'.24 E

726 AUSTRALIA - TASMANIA - Southport - Light

Marine and Safety Tasmania Notice M134/2018

Aus 173 [1025/2017]

Amend	light to <i>Fl.Bu.5s</i>	43° 26'.0 S	146° 58'.5 E
-------	--------------------------	-------------	--------------

Aus 174 (Southport) [725/2018]

Amend	light to <i>Fl.Bu.5s</i>	43° 26'.00 S	146° 58'.49 E
-------	--------------------------	--------------	---------------

727(T)/2018 AUSTRALIA - QUEENSLAND - Brisbane River - South Brisbane Reach - Harbour works

Maritime Safety Queensland Notice 316(T)/2018

Works associated with the construction of Queens Wharf are in progress in an area bounded by the following positions:

27° 28'.91 S 153° 01'.68 E

27° 28'.78 S 153° 01'.73 E

27° 28'.55 S 153° 01'.50 E

27° 28'.60 S 153° 01'.36 E.

Barges, *Caliope* and *Kochi*, and tugs are on site and will monitor VHF Ch 12, Ch 13 and Ch 16.

A 6 knot speed limit is in force for all vessels.

Safe water is marked by starboard lateral light buoys, *Fl.G.2-5s*, in position 27° 28'.57 S 153° 01'.46 E and 27° 28'.85 S 153° 01'.70 E.

Special light buoys and lights will be established to mark any hazards to navigation.

Mariners are advised to navigate with caution in the area.

Chart temporarily affected - Aus 238**728(P)/2018 AUSTRALIA - QUEENSLAND - Cooktown - Shoaling**

Maritime Safety Queensland

Latest survey shows shoaler depths than those charted may exist in an area bounded by the following positions:

15° 27'.78 S 145° 14'.39 E

15° 27'.82 S 145° 14'.36 E

15° 27'.85 S 145° 14'.43 E

15° 27'.78 S 145° 14'.67 E

15° 27'.56 S 145° 14'.77 E

15° 27'.55 S 145° 14'.74 E.

Mariners are advised to navigate with caution in the area.

Charts will be updated in due course.

Chart which will be affected - Aus 270**729(T)/2018 AUSTRALIA - QUEENSLAND - Hay Point - Bed levelling operations**

Maritime Safety Queensland Notice 302(T)/2018

Vessel *Pacific Tiger* is conducting bed levelling operations in the DBCT berth pockets (21° 14'.96 S 149° 18'.32 E).

Mariners are advised to navigate with caution in the area.

Chart temporarily affected - Aus 249 - Aus 250**730(T)/2018 AUSTRALIA - QUEENSLAND - Hay Point - Diving operations completed**

Former Notice - 684(T)/2018 is cancelled

Maritime Safety Queensland Notice 277/2018, 302(T)/2018

Cancel this notice on receipt.

Chart formerly affected - Aus 249 - Aus 250

731(T)/2018 AUSTRALIA - QUEENSLAND - Moreton Bay - Ship to ship transfer*Former Notice - 423(T)/2017 is cancelled*

Maritime Safety Queensland Notice 308(T)/2018

Ship to ship transfer of LPG will be conducted at STS1 anchorage (27° 17'.17 S 153° 16'.57 E).

A 0.54M radius exclusion zone exists around transfer operations.

Chart temporarily affected - Aus 236**732(T)/2018 AUSTRALIA - QUEENSLAND - Moreton Bay - North West Channel - Shoaling***Former Notice - 459(T)/2018 is cancelled*

Maritime Safety Queensland Notice 312(T)/2018

Shoaling exists in North West Channel as follows:

<i>Position</i>	<i>Depth</i>
27° 00'.33 S 153° 14'.44 E	14.8m
27° 00'.04 S 153° 14'.45 E	14.9m

Mariners are advised to navigate with caution in the area.

Chart temporarily affected - Aus 235 - Aus 236**733(T)/2018 AUSTRALIA - QUEENSLAND - Port of Airlie - Muddy Bay - Harbour works**

Maritime Safety Queensland Notice 325(T)/2018

Harbour works associated with the construction of new marina berthing arms is under way in the vicinity of position 20° 16'.25 S 148° 43'.46 E.

Mariners are advised to navigate with caution in the area.

Chart temporarily affected - Aus 252 - Aus 253 - Aus 269**734(T)/2018 AUSTRALIA - QUEENSLAND - Rattlesnake Island - Live firing completed***Former Notice - 637(T)/2018 is cancelled*

Maritime Safety Queensland Notice 263(T)/2018

Cancel this notice on receipt.

Chart formerly affected - Aus 256 - Aus 827**735(T)/2018 AUSTRALIA - QUEENSLAND - Rattlesnake Island - Military exercise completed***Former Notice - 365(T)/2018 is cancelled*

Maritime Safety Queensland Notice 134(T)/2018

Cancel this notice on receipt.

Chart formerly affected - Aus 256 - Aus 827**736(T)/2018 AUSTRALIA - QUEENSLAND - Shoalwater Bay - Live firing completed***Former Notice - 367(T)/2018 is cancelled*

Maritime Safety Queensland Notice 130(T)/2018

Cancel this notice on receipt.

Chart formerly affected - Aus 260 - Aus 261 - Aus 367 - Aus 822

737(T)/2018 AUSTRALIA - QUEENSLAND - Shoalwater Bay - Triangular Islands - Live firing
Maritime Safety Queensland Notice 239(T)/2018

Live firing will be conducted in the Shoalwater Bay training area during the period 14 August to 2 September 2018.

A marine danger area extends to all internal waters within a 3M radius of position 22° 22'.58 S 150° 30'.40 E.

All waters, creeks, beaches and other areas within the declared marine danger area are not available for access.

There will be safe anchorages available at Freshwater, Port Clinton, West Water Port Clinton, South Arm Port Clinton, Pearl Bay, Island Head Creek and Supply Bay Townshend Island.

Mariners are advised to keep clear of this area throughout the above times.

Chart temporarily affected - Aus 260 - Aus 367 - Aus 822

738(T)/2018 AUSTRALIA - TIMOR SEA - Bathurst Island - Seismic survey northwards completed
Former Notice - 646(T)/2018 is cancelled
Santos

Cancel this notice on receipt.

Chart formerly affected - Aus 316 - Aus 318 - Aus 725 - Aus 726 - Aus 4721 (INT 721)

739(T)/2018 AUSTRALIA - WESTERN AUSTRALIA - Ashburton - Dredging operations; survey operations
Pilbara Ports Authority Notice A2(T)/2018

Vessels *Juan Sebastian de Elcano*, *Bhagwan Renegade*, *Go Puriya* and *Pure Adrenalin* are conducting dredging and survey operations in the channel (21° 36'.5 S 115° 01'.5 E), swing basin (21° 40'.5 S 115° 00'.4 E), anchorages (21° 32'.5 S 114° 58'.0 E) and spoil ground (21° 29'.0 S 115° 08'.0 E).

Vessels will display appropriate lights and shapes and monitor VHF Ch 14 & Ch 16.

Mariners are advised to navigate with caution in the area.

Chart temporarily affected - Aus 64 - Aus 69 - Aus 743 - Aus 744

740(T)/2018 AUSTRALIA - WESTERN AUSTRALIA - Barrow Island - Well abandonment works westwards
Former Notice - 695(T)/2018 is cancelled
Quadrant Energy, Department of Transport WA Notice 115/2018

Cancel this notice on receipt.

Chart formerly affected - Aus 328

741(T)/2018 AUSTRALIA - WESTERN AUSTRALIA - Bedout Island - Drilling operations completed
Former Notice - 297(T)/2018 is cancelled
Quadrant Energy

Cancel this notice on receipt.

Chart formerly affected - Aus 326 - Aus 4722 (INT 722)

742(T)/2018 AUSTRALIA - WESTERN AUSTRALIA - Dampier - Rio Tinto Channel - Bed levelling operations; survey operations

Pilbara Ports Authority Notice D9(T)/2018

Vessel *MTS Vantage* is conducting bed levelling operations and vessel *PHS Zephyr* is conducting survey operations in the vicinity of No5W light beacon (20° 35'.71 S 116° 41'.61 E) and No6W light beacon (20° 36'.50 S 116° 41'.48 E).

Vessels will monitor VHF Ch 11 and Ch 16 and display appropriate lights and shapes.

Mariners are advised to navigate with caution in the area.

Chart temporarily affected - Aus 58

743(T)/2018 AUSTRALIA - WESTERN AUSTRALIA - Geraldton - Nav aids restored

Former Notice - 698(T)/2018 is cancelled

Mid West Ports Notice 3/2018

Cancel this notice on receipt.

Chart formerly affected - Aus 81 - Aus 751

744(T)/2018 AUSTRALIA - WESTERN AUSTRALIA - Mandurah Estuary - Shoaling

Department of Transport WA Notice 108/2018

Shoaling exists in the vicinity of position 32° 31'.86 S 115° 42'.87 E.

Mariners are advised to navigate with caution in the area.

Chart temporarily affected - Aus 116

745(T)/2018 AUSTRALIA - WESTERN AUSTRALIA - Muiron Islands - Drilling operations northwards

Quadrant Energy

Drill rig *Development Driller 1* is conducting drilling operations in position 21° 23'.21 S 114° 04'.60 E.

500m exclusion zone requested.

Chart temporarily affected - Aus 744

746(T)/2018 AUSTRALIA - WESTERN AUSTRALIA - Muiron Islands - Subsea operations; pipeline operations

Technip FMC

Vessel *Deep Orient* is conducting subsea and pipeline operations in the vicinity of position 21° 25'.75 S 114° 05'.07 E.

Chart temporarily affected - Aus 328 - Aus 329 - Aus 744

747(T)/2018 AUSTRALIA - WESTERN AUSTRALIA - Muiron Islands - Pipeline operations; ship to ship transfer completed

Former Notice - 302(T)/2018 is cancelled

Technip FMC

Cancel this notice on receipt.

Chart formerly affected - Aus 328 - Aus 329 - Aus 744 - Aus 745

748(T)/2018 AUSTRALIA - WESTERN AUSTRALIA - North West Cape - Drill rig northwestwards

Former Notice - 650(T)/2018 is cancelled
 MODU *ENSCO DPS-1*

Drill rig *Ensko DPS-1* is conducting drilling operations in position 21° 32'.00 S 113° 51'.20 E.

Chart temporarily affected - Aus 328 - Aus 329 - Aus 4723 (INT 723) - Aus 4725 (INT 725)

749(T)/2018 AUSTRALIA - WESTERN AUSTRALIA - Port Walcott - Point Samson - Dredging operations

Department of Transport WA Notice 110/2018

The dredge *Cooper II* is conducting dredging operations in the boat harbour (20° 38'.24 S 117° 11'.48 E) and entrance channel (20° 38'.36 S 117° 11'.54 E).

A 60m floating pipeline marked by special light buoys exists in the area. An amphibious excavator exists at the disposal site in the vicinity of position 20° 38'.58 S 117° 11'.08 E.

The dredge will display appropriate lights and shapes and will monitor VHF Ch 81 and Meg Ch 90. Mariners must make contact prior to navigating past the dredge.

Mariners are advised to navigate with caution in the area.

Chart temporarily affected - Aus 56

750(T)/2018 AUSTRALIA - WESTERN AUSTRALIA - Rottnest Island - Subsea operations completed

Former Notice - 590(T)/2018 is cancelled
 Australian Maritime Safety Authority

Cancel this notice on receipt.

Chart formerly affected - Aus 754

751(T)/2018 AUSTRALIA - WESTERN AUSTRALIA - Trigg Island - Light buoy recovered

Former Notice - 592(T)/2018 is cancelled
 Department of Transport WA

Cancel this notice on receipt.

Chart formerly affected - Aus 112

752(T)/2018 AUSTRALIA - WESTERN AUSTRALIA - Varanus Island - Drill rig northeastwards

Quadrant Energy , Department of Transport WA Notice 115/2018

Drill rig *Ensko 107* is conducting drilling operations in position 20° 33'.97 S 115° 37'.37 E.

Chart temporarily affected - Aus 327 - Aus 742

753(T)/2018 INDIAN OCEAN - Gascoyne Plain - Light buoy off station

Australian Bureau of Meteorology

The special light buoy, *Fl. Y. 2s* (14° 02'.7 S 110° 01'.7 E) is off station.

Chart temporarily affected - Aus 4708 (INT 708) - Aus 4723 (INT 723)

754(T)/2018 AUSTRALIA - SOUTH AUSTRALIA - Glenelg - Shoaling; dredging operations*Former Notice* - 1000(T)/2016 is cancelled

Department of Planning, Transport and Infrastructure SA Notice 26/2018

Shoaling exists in the entrance channel to Holdfast Shores (34° 58'.42 S 138° 30'.51 E).

Dredging operations are in progress in the area.

Mariners are advised to navigate with caution in the area.

Chart temporarily affected - Aus 125**755(T)/2018 AUSTRALIA - SOUTH AUSTRALIA - Thevenard - Bosanquet Bay - Harbour works**

Department of Planning, Transport and Infrastructure SA Notice 23/2018

Harbour works associated with the construction of a new breakwater are in progress in the vicinity of position 32° 09'.04 S 133° 39'.34 E.

The area is marked by special buoys and a light will be established at the end of the breakwater.

The boat ramp is closed during the works.

Mariners are advised to navigate with caution in the area.

Chart temporarily affected - Aus 120 - Aus 122**756(T)/2018 AUSTRALIA - VICTORIA - Cape Conran - Drill rig southwards**AMS Group , MODU *Ocean Monarch*Drill rig *Ocean Monarch* is conducting drilling operations in position 38° 36'.00 S 148° 34'.98 E.**Chart temporarily affected - Aus 357 - Aus 487 - Aus 4644 (INT 644)****757(T)/2018 AUSTRALIA - VICTORIA - Cape Conran - Well abandonment works southwards***Former Notice* - 701(T)/2018 is cancelled

Cooper Energy

Cancel this notice on receipt.

Chart formerly affected - Aus 357 - Aus 487**758(T)/2018 AUSTRALIA - VICTORIA - Port Phillip - Curlewis Bay - Exclusion zone removed***Former Notice* - 655(T)/2018 is cancelled

Parks Victoria Notice 240/2018

Cancel this notice on receipt.

Chart formerly affected - Aus 143 - Aus 157**759(T)/2018 AUSTRALIA - VICTORIA - Port Phillip - Point Nepean - Light buoy restored***Former Notice* - 657(T)/2018 is cancelled

Parks Victoria Notice 252/2018

Cancel this notice on receipt.

Chart formerly affected - Aus 144**760(T)/2018 AUSTRALIA - TASMANIA - Storm Bay - Light buoy**

Marine and Safety Tasmania

A special light buoy, *Fl. Y. 3s* exists in approximate position 43° 08'.46 S 147° 36'.57 E.**Chart temporarily affected - Aus 795 - Aus 796**

761(T)/2018 SOLOMON ISLANDS - Indispensable Strait - Auki Harbour - Light relit

Former Notice - 136(T)/2018 is cancelled

Solomon Islands Maritime Safety Administration Notice 5/2018

Cancel this notice on receipt.

Chart formerly affected - SLB 104 - SLB 304

HYDROGRAPHIC REPORTS

<i>Locality</i>	<i>Report</i>	<i>Ship/Authority</i>	<i>Observer</i>
PNG- Lababia Island	Shoals	RV <i>BGP Explorer</i>	K Richards

III

NAVIGATION WARNINGS

The Australian Hydrographic Office will no longer compile Section III of the Australian Notices to Mariners. For the most up to date navigation warnings please refer to:

AMSA Navigation Warnings

<http://amsa.gov.au/search-and-rescue/distress-and-safety-comms/msi/msi-email/index.asp>

New Zealand Notices to Mariners (Navarea XIV warnings)

<http://www.linz.govt.nz/sea/maritime-safety/notices-mariners>

To accompany Australian Notice to Mariners 711/2018

OIL AND GAS PIPELINES

Pipelines carry flammable oil or gas at high pressure. A damaged pipeline could cause an explosion, resulting in damage to a vessel or the environment. Pipelines may pass over bottom undulations, be buried or protrude above the seabed reducing charted depths. Vessels should avoid anchoring, trawling or conducting other underwater operations in the vicinity of the pipelines.

Note for chart Aus 237

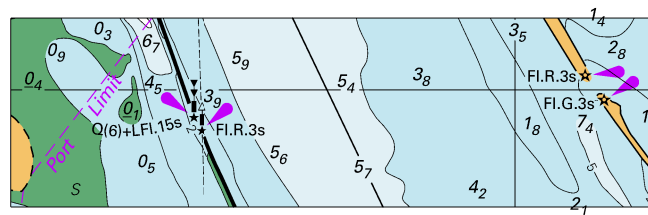
To accompany Australian Notice to Mariners 711/2018

OIL AND GAS PIPELINES

Pipelines carry flammable oil or gas at high pressure. A damaged pipeline could cause an explosion, resulting in damage to a vessel or the environment. Pipelines may pass over bottom undulations, be buried or protrude above the seabed reducing charted depths. Vessels should avoid anchoring, trawling or conducting other underwater operations in the vicinity of the pipelines.

Note for chart Aus 238

To accompany Australian Notice to Mariners 708/2018

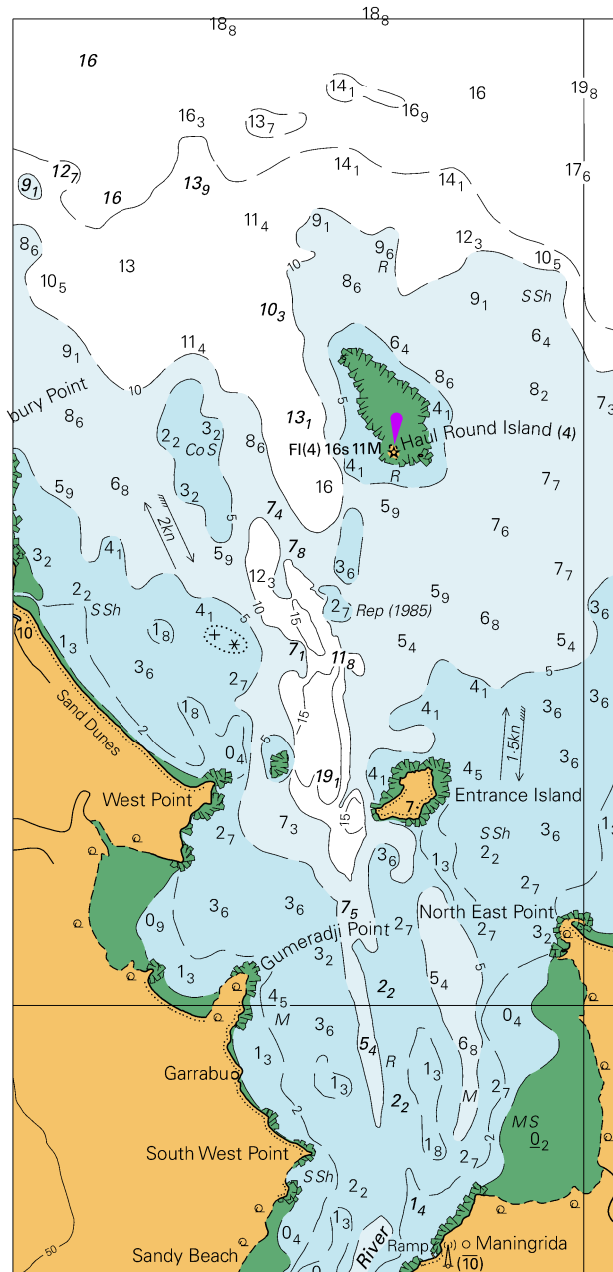


© Commonwealth of Australia 2018

Block for Chart Aus 222

(85.5 x 24.9mm)

To accompany Australian Notice to Mariners 717/2018



© Commonwealth of Australia 2018

Block for Chart Aus 718

(79.5x165.7mm)

(220.2 x 124.0mm)

To accompany Australian Notice to Mariners 724/2018

