



7 September 2018

Edition 18

AUSTRALIAN NOTICES TO MARINERS

Notices 762 - 801

Published fortnightly by the Australian Hydrographic Office



Australian Notices to Mariners are the authority for correcting charts and publications published by the Australian Hydrographic Office covering Australia, Papua New Guinea, Solomon Islands, Australian Antarctic Territory and Timor-Leste.

Commodore F.T. FREEMAN RAN
Hydrographer of Australia

SECTIONS.

- I. **Australian Notices to Mariners, including blocks and notes.**
- II. **Hydrographic Reports.**
- III. **Navigational Warnings.**

SUPPLEMENTS.

- I. **Tracings**
- II. **Cumulative List of Australian Notices to Mariners.**
- III. **Cumulative List of Temporary and Preliminary Australian Notices to Mariners.**
- IV. **Temporary and Preliminary Notices in force.**
- V. **Amendments to Admiralty List of Lights and Fog Signals (Vol K), Radio Signals (NP 281(2), 282, 283(2), 285, 286(4)) and Sailing Directions (NP 9, 13, 14, 15, 33, 34, 35, 36, 39, 44, 51, 60, 61, 62, 100, 136).**

© Commonwealth of Australia 2018

This work is copyright. Apart from any use permitted under the Copyright Act 1968, no part may be reproduced by any process, adapted, communicated or commercially exploited without prior written permission from The Commonwealth represented by the Australian Hydrographic Office.

IMPORTANT NOTICE

This edition of Notices to Mariners includes all significant information affecting AHO products which the AHO has become aware of since the last edition. All reasonable efforts have been made to ensure the accuracy and completeness of the information, including third party information, on which these updates are based. The AHO regards third parties from which it receives information as reliable, however the AHO cannot verify all such information and errors may therefore exist. The AHO does not accept liability for errors in third party information.

GENERAL INSTRUCTIONS

The substance of these notices should be inserted on the charts affected.

Bearings are referred to the true compass and are reckoned clockwise from North; those relating to lights are given as seen by an observer from seaward.

Positions quoted in notices relate to WGS84 which is the horizontal datum for all charts produced by the Australian Hydrographic Office.

The range quoted for a light is its nominal range.

Depths are with reference to the chart datum of each chart. Heights are above mean high water springs or mean higher high water, as appropriate.

The capital letter (P) or (T) after the number of any notice denotes a preliminary or temporary notice respectively, which are contained separately at the end of the permanent notices.

REPORTING OF DANGERS

Mariners are particularly requested to notify the AUSTRALIAN HYDROGRAPHIC OFFICE, Locked Bag 8801 Wollongong, NSW 2500 (Fax 02-4223 6599, e-mail datacentre@hydro.gov.au or, alternatively by filling in and submitting the [Hydrographic Notes](#) forms located on the web site – www.hydro.gov.au), immediately on the discovery of new dangers or suspected dangers to navigation. For changes or defects in aids to navigation notify AusSAR (Fax 02-6230 6868 or email rccaus@amsa.gov.au).

AUTHORISED USE

Copies of Australian notices are available free of charge from the Australian Hydrographic Office (AHO) website (www.hydro.gov.au) and through the eNotices (email) service (www.hydro.gov.au/enotices/enotices.htm).

Individual Notices may be copied for the purpose of inserting Notice substance on official charts and publications. Paper copies may be printed by chart agents and distributed to customers on a cost recovery basis. Participating chart agents are listed on the AHO website as providing a 'Paper Notices to Mariners' service (www.hydro.gov.au/webapps/jsp/agents/agents-list.jsp). Copies of the notices may not be sold for profit without prior written agreement.

NUMERICAL INDEX OF NOTICES TO MARINERS

Edition No 18

Notices	Aus Chart, INT Chart, ENC Cell, AHP, BA Pubs
762	Aus 812
763	Aus 136
764	Aus 208
765	Aus 207
766	Aus 200
767	Aus 237, 238
768	Aus 241
769	Aus 256
770	Aus 4, 301, 701
771	Aus 621
772	Aus 129
773	Aus 485, 778
774	Aus 143
775	Aus 143, 158
776	Aus 171
777	Aus 148, 171, 173, 177, 767, 798, 800
778	SLB 201
779(T)	Aus 193
780(T)	Aus 200, 201
781(T)	Aus 238
782(P)	Aus 615
783(T)	Aus 249, 250
784(T)	Aus 245, 246
785(T)	Aus 240
786(T)	Aus 259
787(T)	Aus 270
788(T)	Aus 260, 367, 822
789(T)	Aus 4622, INT 622
790(T)	Aus 386, 521, 522, 523, 4620, 4621, 4622, INT 620, 621, 622
791(T)	Aus 754
792(T)	Aus 112, 754, 4725, INT 725
793(T)	Aus 328, 329, 4723, 4725, INT 723, 725
794(T)	Aus 342
795(T)	Aus 357
796(T)	Aus 143, 158
797(T)	Aus 150, 151, 152
798(T)	Aus 790
799(T)	Aus 798, 800
800(T)	Aus 790
801(T)	Aus 173, 795, 796

NUMERICAL INDEX OF CHARTS AFFECTED

Edition No 18

Aus Chart	Notices
Aus 4	770
Aus 112	792(T)
Aus 129	772
Aus 136	763
Aus 143	774, 775, 796(T)
Aus 148	777
Aus 150	797(T)
Aus 151	797(T)
Aus 152	797(T)
Aus 158	775, 796(T)
Aus 171	776, 777
Aus 173	777, 801(T)
Aus 177	777
Aus 193	779(T)
Aus 200	766, 780(T)
Aus 201	780(T)
Aus 207	765
Aus 208	764
Aus 237	767
Aus 238	767, 781(T)
Aus 240	785(T)
Aus 241	768
Aus 245	784(T)
Aus 246	784(T)
Aus 249	783(T)
Aus 250	783(T)
Aus 256	769
Aus 259	786(T)
Aus 260	788(T)
Aus 270	787(T)
Aus 301	770
Aus 328	793(T)
Aus 329	793(T)
Aus 342	794(T)
Aus 357	795(T)
Aus 367	788(T)
Aus 386	790(T)
Aus 485	773
Aus 521	790(T)
Aus 522	790(T)
Aus 523	790(T)
Aus 615	782(P)
Aus 621	771
Aus 701	770
Aus 754	791(T), 792(T)
Aus 767	777
Aus 778	773
Aus 790	798(T), 800(T)
Aus 795	801(T)
Aus 796	801(T)
Aus 798	777, 799(T)
Aus 800	777, 799(T)
Aus 812	762
Aus 822	788(T)

Aus Chart	Notices
Aus 4620	790(T)
Aus 4621	790(T)
Aus 4622	789(T), 790(T)
Aus 4723	793(T)
Aus 4725	792(T), 793(T)
SLB 201	778

INT Chart	Notices
INT 620	790(T)
INT 621	790(T)
INT 622	789(T), 790(T)
INT 723	793(T)
INT 725	792(T), 793(T)

762 AUSTRALIA - Products - New Charts and New Editions to be published shortly

Australian Hydrographic Service

New Charts to be published shortly

<i>Chart</i>	<i>Title</i>	<i>Scale</i>	<i>Expected Publication Date</i>	<i>Remarks</i>
NIL				

New Editions to be published shortly

<i>Chart</i>	<i>Title</i>	<i>Scale</i>	<i>Expected Publication Date</i>	<i>Remarks</i>
AUS 812	Australia - East Coast - New South Wales - Nambucca Heads to Clarence River	1:150 000	21 September 2018	New edition with general updating throughout; including latest bathymetric data.

763 AUSTRALIA - Products - New Charts, New Editions, Withdrawn Charts

Australian Hydrographic Office

New Charts

<i>Chart</i>	<i>Title and Geographical limits</i>	<i>Scale</i>	<i>Publication Date</i>	<i>Remarks</i>
NIL				

New Electronic Navigation Chart (Aus ENC)

<i>Cell Name</i>	<i>Title</i>	<i>Publication Date</i>	<i>Remarks</i>
NIL			

New Editions and Withdrawn Charts

<i>Chart</i>	<i>Title</i>	<i>Scale</i>	<i>Publication Date</i>	<i>Remarks</i>
AUS 136 Edition 2	Australia - South Coast - South Australia - Approaches to Whyalla and Port Pirie Plans: Approaches to Port Pirie Port Pirie	1:75 000 1:25 000 1:7 500	7 September 2018	New Edition to incorporate latest bathymetric data. Chart Aus 136 Edition 1 dated 14 December 2012 is now superseded and must be withdrawn from use.

Admiralty publication

<i>NP No</i>	<i>Title</i>	<i>Date</i>	<i>Remarks</i>
NP286(4)	ADMIRALTY List of Radio Signals. Pilot Services, Vessel Traffic Services and Port Operations. Indian sub-continent, South East Asia and Australasia. 2018/19 Edition.	13/09/2018	The 2017/18 Edition of NP286(4) is cancelled.

Chart permanently withdrawn

Charts listed above as withdrawn no longer meet chart carriage requirements and should be marked as "superseded" and replaced with the new chart/ new edition listed prior to passage through the area covered by the new chart.

When placing orders with a chart agent between notice of forthcoming edition and its publication, mariners should advise whether their order pertains to the current edition or the new edition.

For further details refer to the AHO website at www.hydro.gov.au for new edition and new chart stock arrival information.

764 AUSTRALIA - NEW SOUTH WALES - Newcastle - Hunter River - Light buoy moved

Port Authority of New South Wales

Aus 208 (Hunter River (South Arm)) [551/2018]

Move	light buoy	32° 53'.10 S	151° 45'.27 E
	to	32° 53'.138 S	151° 45'.333 E

765 AUSTRALIA - NEW SOUTH WALES - Newcastle - Pilot boarding place

Port Authority of New South Wales

Aus 207 [551/2018]

Insert	pilot boarding place with magenta legend, <i>Charlie (see Note)</i>	32° 56'.00 S	151° 52'.65 E
--------	---	--------------	---------------

Replace	chart note, with accompanying chart note	32° 57'.4 S	151° 42'.4 E
---------	--	-------------	--------------

766 AUSTRALIA - NEW SOUTH WALES - Port Jackson - Shark Island - Light buoy; wreck

Australian Maritime Warfare Centre

Aus 200 [385/2018]

Replace	wreck 8 ₅ m, with wreck 10 ₇ m	33° 51'.27 S	151° 15'.49 E
---------	--	--------------	---------------

Delete	light buoy	33° 51'.33 S	151° 15'.51 E
	light buoy	33° 51'.58 S	151° 15'.66 E

767 AUSTRALIA - QUEENSLAND - Brisbane River - Legends

Maritime Safety Queensland Notice 306(T)/2018

*On certain copies only***Aus 237 [711/2018]**

Insert	magenta legend, (see Note)	27° 25'.132 S	153° 08'.549 E
--------	----------------------------	---------------	----------------

Delete	magenta legend, (see Note)	27° 24'.56 S	153° 08'.91 E
--------	----------------------------	--------------	---------------

Aus 238 [711/2018]

Insert	magenta legend, (see Note)	27° 25'.132 S	153° 08'.549 E
--------	----------------------------	---------------	----------------

Delete	magenta legend, (see Note)	27° 24'.56 S	153° 08'.91 E
--------	----------------------------	--------------	---------------

768 AUSTRALIA - QUEENSLAND - Great Sandy Strait - Ship Channel - Virtual AIS

Maritime Safety Queensland Notice 322/2018

Aus 241 [276/2018]

Insert	special purpose virtual AIS	25° 09'.05 S	152° 50'.46 E
--------	-----------------------------	--------------	---------------

769 AUSTRALIA - QUEENSLAND - Townsville - Sandfly Creek - Light beacon

Maritime Safety Queensland Notice 327/2018

Aus 256 [667/2018]

Insert	north cardinal light beacon, Q, with topmark	19° 17'.30 S	146° 51'.84 E
--------	--	--------------	---------------

770 AUSTRALIA - QUEENSLAND - Weipa - Albatross Bay - Depths; VTS limit; nav aids; ZOC diagram
Australian Hydrographic Office

Aus 4 [NE 29/6/2018]

Insert	magenta dashed line, with legend <i>Weipa VTS</i> , between	12° 46'.29 S	141° 33'.67 E
		12° 54'.53 S	141° 38'.17 E

Delete	magenta dashed line, with legend <i>Weipa VTS</i> , between	12° 46'.3 S	141° 33'.7 E
		12° 57'.1 S	141° 36'.0 E

Aus 301 [391/2018]

Insert	accompanying block A	12° 41'.80 S	141° 40'.00 E
	accompanying block B	13° 07'.00 S	142° 14'.70 E

Aus 701 [314/2018]

Insert	accompanying block A	12° 33'.6 S	141° 34'.7 E
	accompanying block B	12° 33'.0 S	141° 50'.0 E
	accompanying block C	12° 28'.0 S	142° 05'.0 E

771 PAPUA NEW GUINEA - Vabukori - Pipeline

National Maritime Safety Authority PNG

Aus 621 [393/2018]

Insert	outfall pipeline, with legend <i>Sewer</i> , between	9° 30'.280 S	147° 11'.530 E
		9° 30'.638 S	147° 11'.202 E

772 AUSTRALIA - SOUTH AUSTRALIA - Kangaroo Island - Smith Bay - Depths

HydroSurvey Australia

Aus 129 [568/2018]

Insert	accompanying block	35° 35'.0 S	137° 25'.2 E
--------	--------------------	-------------	--------------

773 AUSTRALIA - SOUTH AUSTRALIA - Port Germein - Light beacon; dolphin; jetty

HydroSurvey Australia

Aus 485 [487/2018]

Delete	light, Fl.WR.10/3M	33° 02'.2 S	137° 59'.6 E
	light, F.Y.8M	33° 06'.3 S	138° 01'.6 E

Aus 778 [397/2018]

Replace	light with light beacon, <i>Fl.WR.4s 8m 10/8M</i> , without topmark	33° 02'.2 S	137° 59'.5 E
---------	---	-------------	--------------

Delete	legend, Tide gauge	33° 02'.2 S	137° 59'.0 E
--------	--------------------	-------------	--------------

774 AUSTRALIA - VICTORIA - Port Phillip - Wrecks

M Sackmann

Aus 143 [722/2018]

Insert	non dangerous wreck	38° 06'.00 S	145° 00'.71 E
	non dangerous wreck	38° 07'.45 S	145° 02'.36 E

775 AUSTRALIA - VICTORIA - Port Phillip - Martha Point - Radio reporting point northwestwards

Victorian Ports Corporation (Melbourne) Notice 249/2018

Aus 143 [774/2018]

Insert	radio reporting point, orient 180°	38° 15'.93 S	144° 54'.99 E
--------	------------------------------------	--------------	---------------

Aus 158 [723/2018]

Insert	out of position radio reporting point, orient 180°	38° 15'.927 S	144° 54'.991 E
--------	--	---------------	----------------

776 AUSTRALIA - TASMANIA - Norfolk Bay - Marine Farm

Marine and Safety Tasmania Notice 131/2018, A Boon

Aus 171 [628/2018]

Move	marine farm	42° 56'.2 S	147° 41'.6 E
	to	42° 56'.12 S	147° 41'.77 E

777 AUSTRALIA - TASMANIA - Southport to Cape Naturaliste - Wrecks

Australian Hydrographic Office

Aus 148 (Kent Group) [558/2017]

Insert	# with magenta legend, <i>Historic Wk (see Note)</i>	39° 29'.465 S	147° 19'.830 E
--------	--	---------------	----------------

Replace	restricted area with danger circle, centred on	39° 27'.38 S	147° 18'.10 E
---------	--	--------------	---------------

Delete	wreck	39° 29'.5 S	147° 19'.9 E
--------	-------	-------------	--------------

Aus 171 [776/2018]

Insert	magenta legend, <i>Historic Wk (see Note)</i>	42° 56'.63 S	147° 25'.52 E
	accompanying note	43° 06'.8 S	147° 54'.5 E

Aus 173 [726/2018]

Insert	magenta legend, <i>Historic Wk (see Note)</i>	43° 26'.75 S	146° 54'.72 E
--------	---	--------------	---------------

Aus 177 (Strahan) [661/2017]

Replace	wreck with stranded wreck	42° 09'.13 S	145° 19'.99 E
	wreck with stranded wreck	42° 09'.27 S	145° 20'.05 E

Aus 767 [62/2017]

Insert	legend, <i>ED</i>	40° 56'.03 S	148° 17'.87 E
	accompanying note	40° 57'.0 S	149° 03'.7 E

Replace	stranded wreck with #, with magenta legend, <i>Historic Wk (see Note)</i>	40° 59'.9 S	148° 20'.1 E
---------	---	-------------	--------------

Aus 798 [66/2018]

Insert	legend, <i>ED</i>	40° 56'.03 S	148° 17'.87 E
--------	-------------------	--------------	---------------

Replace	stranded wreck with #, with magenta legend, <i>Historic Wk (see Note)</i>	40° 59'.9 S	148° 20'.1 E
---------	---	-------------	--------------

Aus 800 [1026/2017]

Insert	magenta legend, <i>Historic Wk (see Note)</i>	39° 52'.60 S	148° 07'.00 E
--------	---	--------------	---------------

778 SOLOMON ISLANDS - Lungga Roads - Depths; coastline; infrastructure

Australian Hydrographic Office

SLB 201 [322/2018]

Insert	accompanying block	9° 23'.2 S	159° 58'.6 E
--------	--------------------	------------	--------------

779(T)/2018 AUSTRALIA - NEW SOUTH WALES - Jervis Bay - Light buoy off station
N Whybrow, Department of Defence

The special spar light buoy, *Fl.Y.10s No1* (35° 06'.39 S 150° 43'.44 E), is off station.

Chart temporarily affected - Aus 193

780(T)/2018 AUSTRALIA - NEW SOUTH WALES - Port Jackson - Shark Island - Light buoys
Former Notice - 461(T)/2016 is cancelled
Australian Maritime Warfare Centre

Cancel this notice on receipt.

Chart formerly affected - Aus 200 - Aus 201

781(T)/2018 AUSTRALIA - QUEENSLAND - Brisbane River - Aquarium Passage - Wreck
Maritime Safety Queensland Notice 326/2018

A wreck marked by a special light buoy, *Fl.Y.3s*, exists in position 27° 25'.74 S 153° 07'.75 E.

Chart temporarily affected - Aus 238

782(P)/2018 AUSTRALIA - QUEENSLAND - Flinders Reef - Shoaling
Maritime Safety Queensland

Latest survey shows shoaler depths than those charted may exist in areas bounded by the following positions:

17° 41'.74 S 148° 35'.82 E
17° 37'.88 S 148° 36'.44 E
17° 32'.09 S 148° 34'.36 E
17° 22'.81 S 148° 25'.78 E
17° 30'.72 S 148° 16'.29 E
17° 43'.51 S 148° 20'.39 E
17° 44'.26 S 148° 27'.71 E.

and:

17° 49'.85 S 148° 23'.54 E
17° 53'.82 S 148° 29'.12 E
17° 53'.16 S 148° 32'.28 E
17° 50'.79 S 148° 33'.13 E
17° 47'.63 S 148° 29'.64 E
17° 45'.93 S 148° 25'.72 E
17° 46'.73 S 148° 23'.97 E.

Mariners are advised to navigate with extreme caution in the area.

Charts will be updated in due course.

Chart which will be affected - Aus 615

783(T)/2018 AUSTRALIA - QUEENSLAND - Freshwater Point to Slade Islet - Scientific instruments
Maritime Safety Queensland Notice 330(T) and 331(T)/2018

Subsurface scientific instruments marked by special light buoys, *Fl.Y.6s*, exist in the following positions:

21° 05'.54 S 149° 14'.49 E
21° 10'.35 S 149° 15'.68 E
21° 19'.05 S 149° 18'.74 E
21° 24'.90 S 149° 20'.12 E.

Chart temporarily affected - Aus 249 - Aus 250

784(T)/2018 AUSTRALIA - QUEENSLAND - Gladstone Harbour - Scientific instruments

Maritime Safety Queensland Notice 351(T)/2018

Special light buoys, *Fl. Y. 6s*, exist in positions 23° 45'.34 S 151° 19'.44 E and 23° 54'.19 S 151° 20'.93 E.

Chart temporarily affected - Aus 245 - Aus 246

785(T)/2018 AUSTRALIA - QUEENSLAND - Great Sandy Strait - Stewart Island - Light beacon unlit

Maritime Safety Queensland Notice 323(T)/2018

The light beacon, *Fl. R. 4s* (25° 38'.01 S 152° 57'.27 E), is unlit.

Chart temporarily affected - Aus 240

786(T)/2018 AUSTRALIA - QUEENSLAND - Hinchinbrook Channel - Light buoy off station

Maritime Safety Queensland Notice 328(T)/2018

The port lateral light buoy, *Fl. R. 2·5s No 14* (18° 28'.34 S 146° 12'.99 E), is off station.

Chart temporarily affected - Aus 259

787(T)/2018 AUSTRALIA - QUEENSLAND - Port Douglas - Light buoy recovered*Former Notice - 532(T)/2018 is cancelled*

Maritime Safety Queensland Notice 339/2018

Cancel this notice on receipt.

Chart formerly affected - Aus 270

788(T)/2018 AUSTRALIA - QUEENSLAND - Shoalwater Bay - Triangular Islands - Live firing completed*Former Notice - 737(T)/2018 is cancelled*

Maritime Safety Queensland Notice 239(T)/2018

Cancel this notice on receipt.

Chart formerly affected - Aus 260 - Aus 367 - Aus 822

789(T)/2018 PAPUA NEW GUINEA - Bismarck Sea - Fish aggregating devices

National Maritime Safety Authority PNG Warning 9/2018

17 fish aggregating devices exist in an area bounded by the following positions:

4° 30'.0 S 149° 55'.0 E

4° 40'.0 S 149° 55'.0 E

4° 40'.0 S 150° 45'.0 E

4° 30'.0 S 150° 45'.0 E.

Mariners are advised to navigate with caution.

Chart temporarily affected - Aus 4622 (INT 622)

790(T)/2018 PAPUA NEW GUINEA - Huon Gulf - Fish aggregating devices
National Maritime Safety Authority PNG Warning 8/2018

23 fish aggregating devices exist in an area bounded by the following positions:

7° 00'.0 S 147° 40'.0 E
7° 55'.0 S 147° 40'.0 E
7° 55'.0 S 148° 50'.0 E
7° 00'.0 S 148° 50'.0 E.

Mariners are advised to navigate with caution.

Chart temporarily affected - Aus 386 - Aus 521 - Aus 522 - Aus 523 - Aus 4620 (INT 620) - Aus 4621 (INT 621) - Aus 4622 (INT 622)

791(T)/2018 AUSTRALIA - WESTERN AUSTRALIA - Direction Bank - Wave glider
Blue Ocean Monitoring , Australian Maritime Safety Authority Auscoast Warning 178/2018

An underwater glider is operating in an area bounded by the following positions:

31° 45'.0 S 115° 37'.5S
31° 30'.0 S 115° 30'.0S
31° 30'.0 S 115° 00'.0S
31° 45'.0 S 115° 00'.0S.

Mariners are advised to navigate with caution in the area.

Chart temporarily affected - Aus 754

792(T)/2018 AUSTRALIA - WESTERN AUSTRALIA - Direction Bank - Cable operations
Australian Maritime Safety Authority Auscoast Warning 181/2018

Vessel *Ile De Brehat* is conducting cable laying operations between positions 31° 34'.0 S 114° 43'.0 E and 31° 55'.0 S 115° 45'.0.

Mariners are advised to navigate with caution. 2.5M clearance requested.

Chart temporarily affected - Aus 112 - Aus 754 - Aus 4725 (INT 725)

793(T)/2018 AUSTRALIA - WESTERN AUSTRALIA - North West Cape - Drill rig northwestwards
Former Notice - 748(T)/2018 is cancelled
MODU *ENSCO DPS-1*

Drill rig *Ensco DPS-1* is conducting drilling operations in position 21° 31'.71 S 113° 51'.56 E.

Chart temporarily affected - Aus 328 - Aus 329 - Aus 4723 (INT 723) - Aus 4725 (INT 725)

794(T)/2018 AUSTRALIA - SOUTH AUSTRALIA - Flinders Island - Point Malcolm - Light unlit
Department of Planning, Transport and Infrastructure SA Notice 28/2018

The light, *Fl(2) 10s 67m 11M* (33° 40'.90 S 134° 31'.59 E) is unlit.

Chart temporarily affected - Aus 342

795(T)/2018 AUSTRALIA - VICTORIA - Cape Conran - Subsea operations; pipeline operations southwards
Cooper Energy

Vessel *Seven Oceans* and support vessels are conducting subsea and pipeline operations between positions:

37° 48'.11 S 148° 26'.15 E
37° 50'.55 S 148° 26'.23 E
38° 06'.62 S 149° 01'.54 E.

Chart temporarily affected - Aus 357

796(T)/2018 AUSTRALIA - VICTORIA - Port Phillip - Mount Martha - Light buoy restored

Former Notice - 594(T)/2018 is cancelled
 Parks Victoria Notice 253/2018

Cancel this notice on receipt.

Chart formerly affected - Aus 143 - Aus 158

797(T)/2018 AUSTRALIA - VICTORIA - Western Port - North Arm - Hastings Bight - Light beacon relit

Former Notice - 703(T)/2018 is cancelled
 Parks Victoria Notice 261/2018

Cancel this notice on receipt.

Chart formerly affected - Aus 150 - Aus 151 - Aus 152

798(T)/2018 AUSTRALIA - TASMANIA - Hunter Island - Scientific instrument

Former Notice - 430(T)/2018 is cancelled
 Marine and Safety Tasmania Notice M141/2018

A subsurface scientific instrument exists in position 40° 29'.18 S 144° 48'.76 E.

Chart temporarily affected - Aus 790

799(T)/2018 AUSTRALIA - TASMANIA - Lookout Head - Scientific instrument

Former Notice - 264(T)/2018 is cancelled
 Marine and Safety Tasmania Notice M52/2018

A special buoy exists in position 40° 34'.39 S 148° 07'.40 E.

Chart temporarily affected - Aus 798 - Aus 800

800(T)/2018 AUSTRALIA - TASMANIA - Robbins Island - Scientific instruments recovered

Former Notice - 1104(T)/2017 is cancelled
 Marine and Safety Tasmania

Cancel this notice on receipt.

Chart formerly affected - Aus 790

801(T)/2018 AUSTRALIA - TASMANIA - Storm Bay - Scientific instrument recovered

Former Notice - 544(T)/2018 is cancelled
 Marine and Safety Tasmania Notice M144/2018

Cancel this notice on receipt.

Chart formerly affected - Aus 173 - Aus 795 - Aus 796

HYDROGRAPHIC REPORTS

<i>Locality</i>	<i>Report</i>	<i>Ship/Authority</i>	<i>Observer</i>
NSW- Jervis Bay	Light buoy	<i>Sycamore</i>	N Whybrow

III

NAVIGATION WARNINGS

The Australian Hydrographic Office will no longer compile Section III of the Australian Notices to Mariners. For the most up to date navigation warnings please refer to:

AMSA Navigation Warnings

<http://amsa.gov.au/search-and-rescue/distress-and-safety-comms/msi/msi-email/index.asp>

New Zealand Notices to Mariners (Navarea XIV warnings)

<http://www.linz.govt.nz/sea/maritime-safety/notices-mariners>

To accompany Australian Notice to Mariners 765/2018

PILOT BOARDING AREAS ALPHA, BRAVO
AND CHARLIE

Vessels entering the Port should not proceed north of the pilot boarding areas without permission of the Vessel Traffic Information Centre on VHF Channel 9, or by the attendant pilot vessel or pilot helicopter transfer, or by telephoning (02) 49 858 292. All vessels not under pilotage should not enter the precautionary area due to vessels manoeuvring in the vicinity for pilot boarding.

Note for chart Aus 207

To accompany Australian Notice to Mariners 777/2018

HISTORIC WRECK

The site of an historic wreck is protected from unauthorised interference. For details see Seafarers Handbook for Australian Waters AHP 20.

Note for chart Aus 767

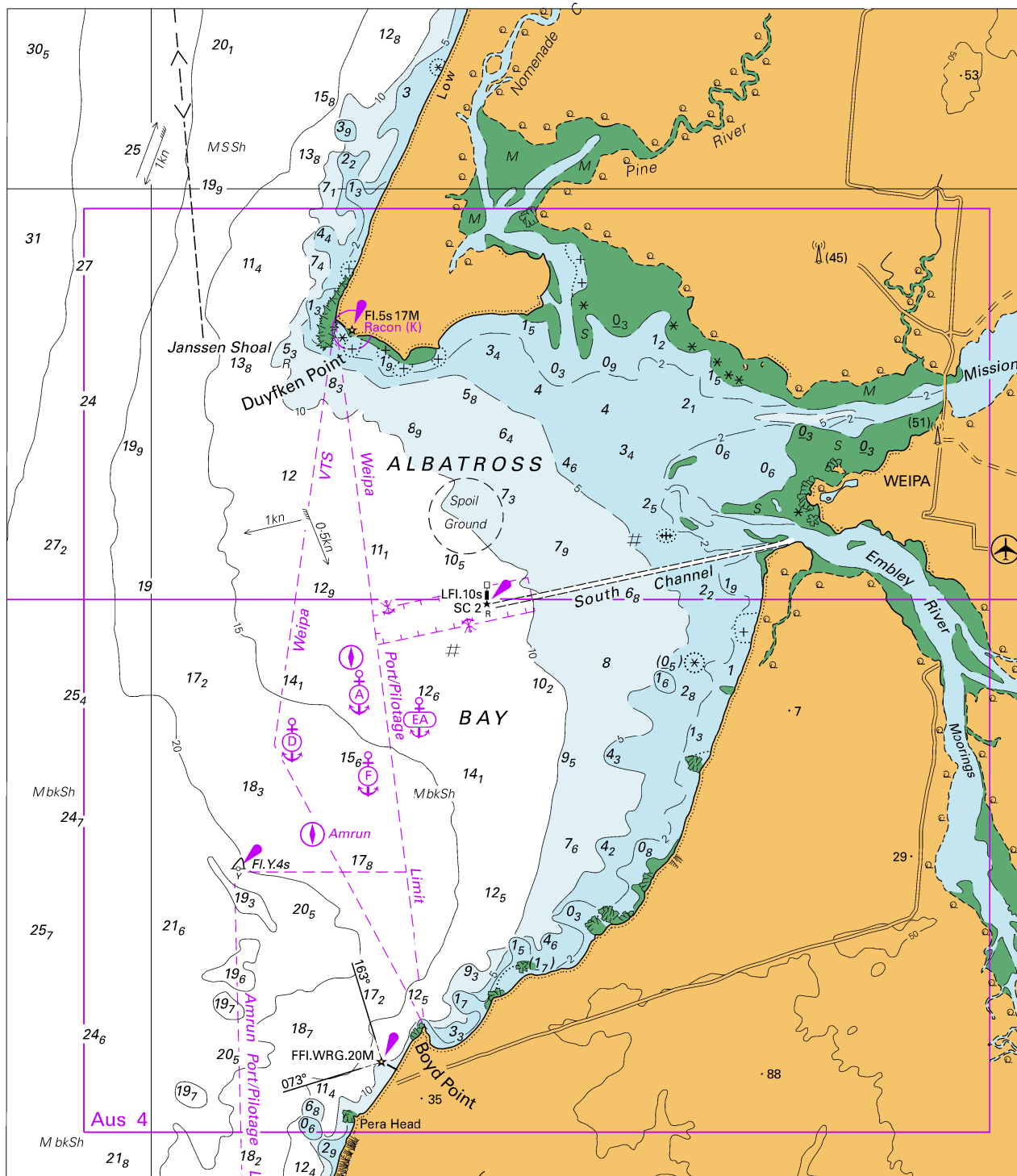
To accompany Australian Notice to Mariners 777/2018

HISTORIC WRECK

The site of an historic wreck is protected from unauthorised interference. For details see Seafarers Handbook for Australian Waters AHP 20.

Note for chart Aus 171

To accompany Australian Notice to Mariners 770/2018

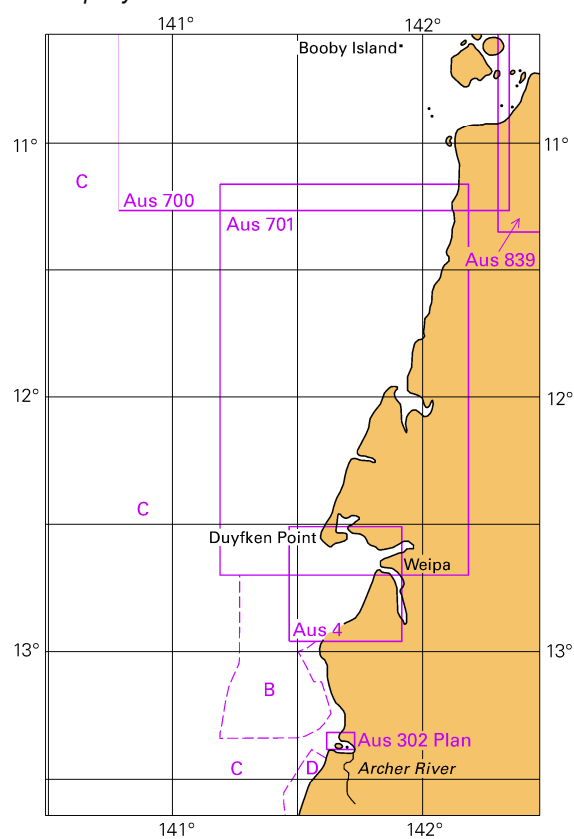


Block A for chart Aus 301

© Commonwealth of Australia 2018

(166.9 x 191.9mm)

To accompany Australian Notice to Mariners 770/2018

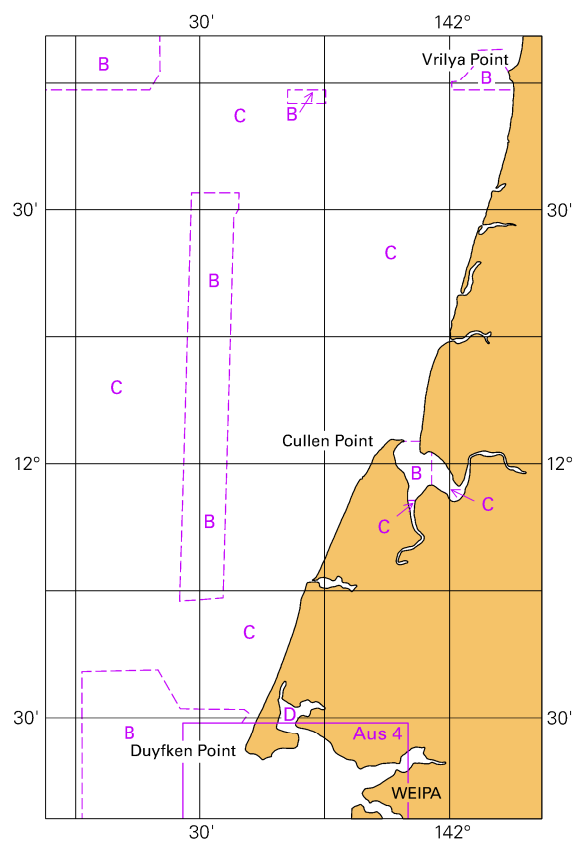


© Commonwealth of Australia 2018

Block B for chart Aus 301

(65.34 x 103.3mm)

To accompany Australian Notice to Mariners 770/2018

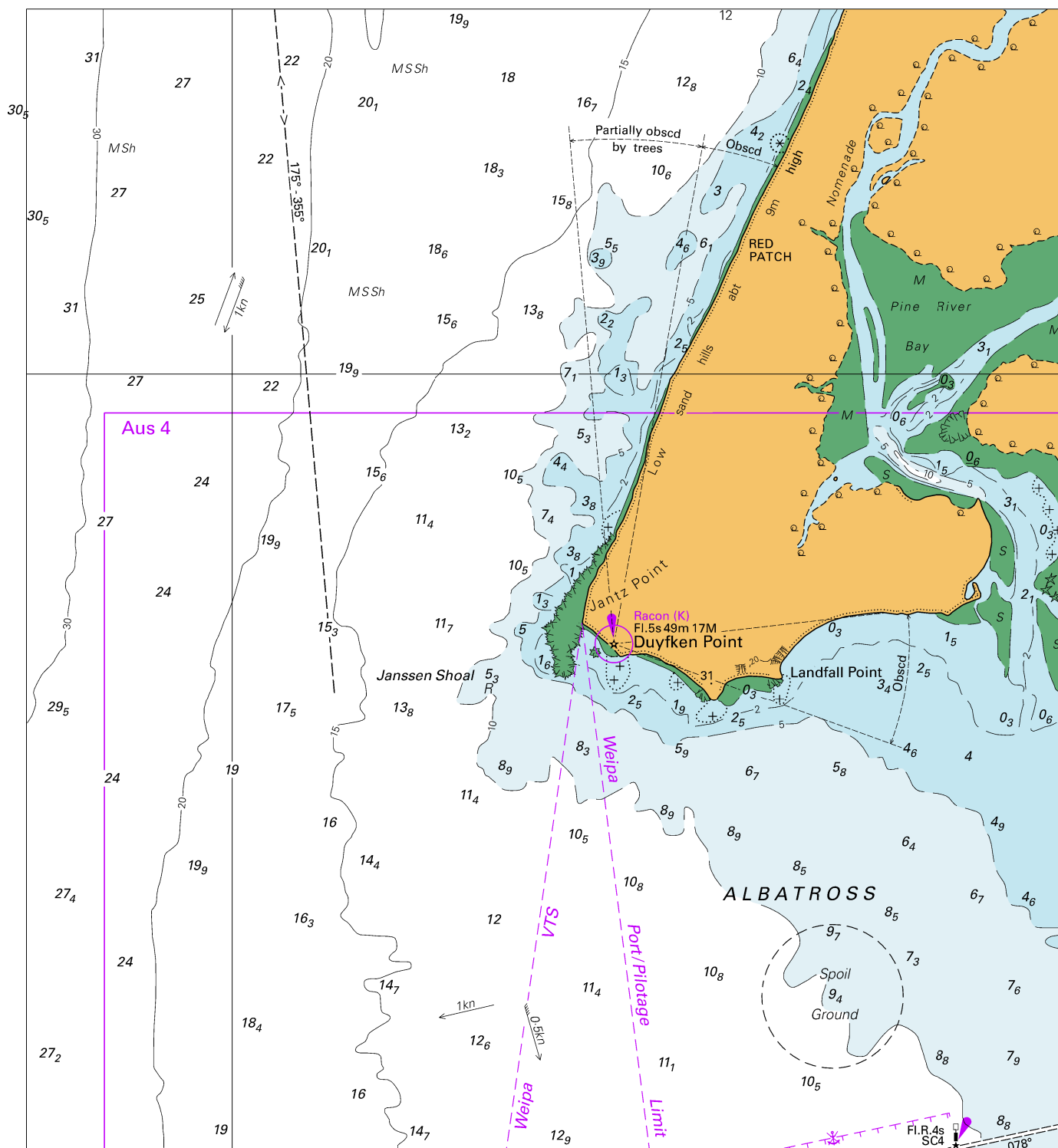


© Commonwealth of Australia 2018

Block C for Chart Aus 701

(65.5 x 103.6mm)

To accompany Australian Notice to Mariners 770/2018

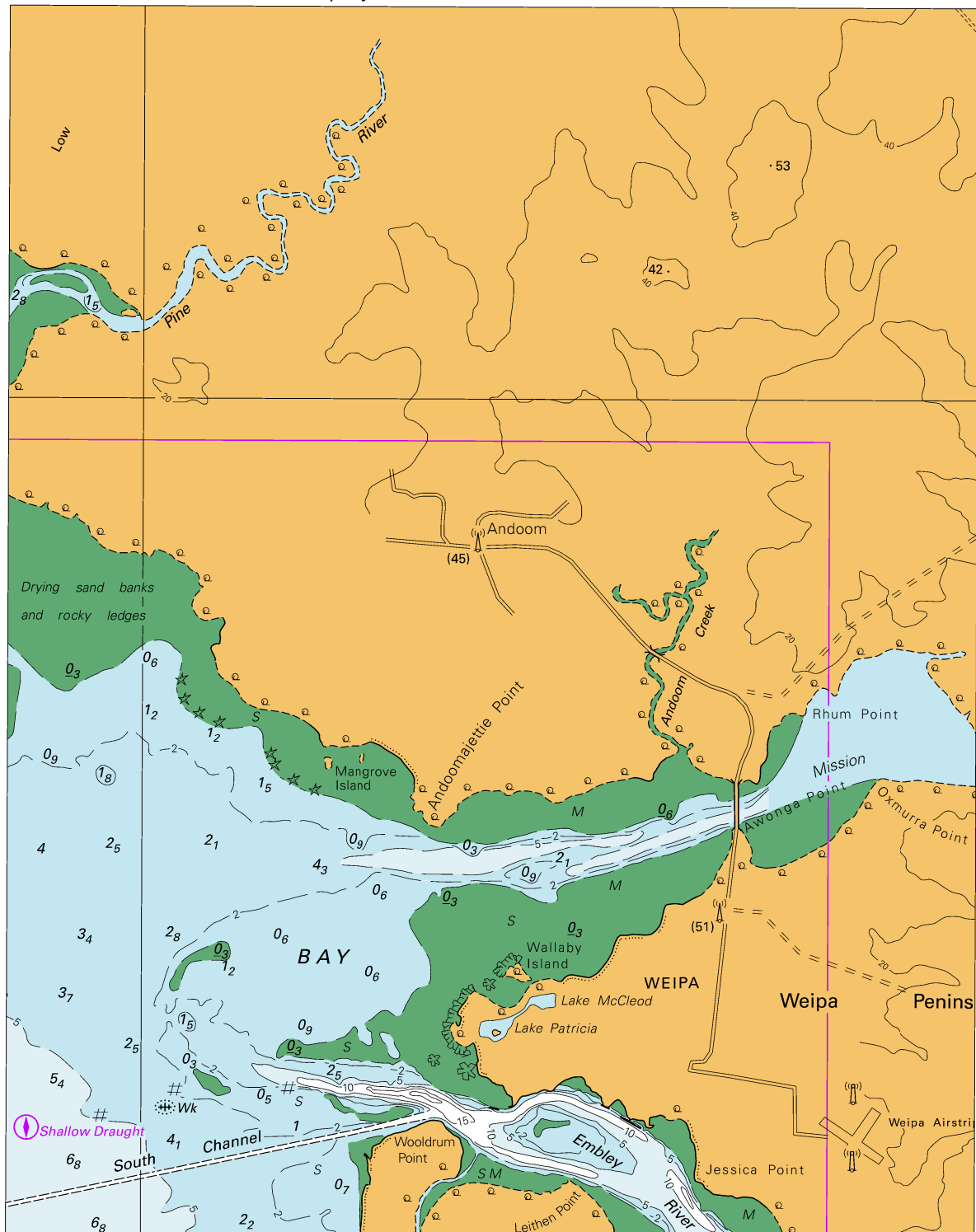


Block A for chart Aus 701

© Commonwealth of Australia 2018

(178.4 x 196.9mm)

To accompany Australian Notice to Mariners 770/2018

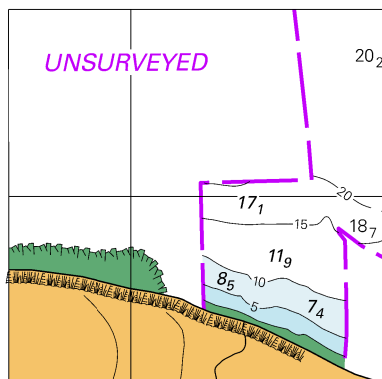


Block B for Chart Aus 701

© Commonwealth of Australia 2018

(155.0 x 196.9mm)

To accompany Australian Notice to Mariners 772/2018



© Commonwealth of Australia 2018

Block for Chart Aus 129 (50.2 x 49.0mm)

The map shows the coastal area of Honiara, Solomon Islands. Key features include:

- Topography:** Elevation contours are shown with values such as 100, 150, 200, 250, 300, 350, 400, 450, 500, 550, and 600.
- Place Names:** LUNGGA ROADS, HONIARA, Lungga Point, and Lungga are labeled.
- Coastal Features:** The coastline is marked with 'SbkSh' (Shoal Bank) and 'Jetty'.
- Infrastructure:** A road network is shown, including 'LUNGGA ROADS'.
- Markings:** A red rectangle highlights a specific area. A red star marks a location near Lungga Point, and a red arrow points to a location near Honiara.
- Other Labels:** 'MS', 'MSH', 'MSH St', 'S', 'SSh', 'FI(3) 20s 5M', 'FI(3)R. 10s 4M', 'FI.G. 5s 4M', 'Kukum', and 'SLB 101' are also present.

(136.8 x 127.8mm)