



AUSTRALIAN NOTICES TO MARINERS

Notices 849 - 895

**Including
Cumulative List – April 2018
List of Temporary and Preliminary Notices in force**



Published fortnightly by the Australian Hydrographic Office

Australian Notices to Mariners are the authority for correcting charts and publications published by the Australian Hydrographic Office covering Australia, Papua New Guinea, Solomon Islands, Australian Antarctic Territory and Timor-Leste.

Commodore F.T. FREEMAN RAN
Hydrographer of Australia

SECTIONS.

- I. **Australian Notices to Mariners, including blocks and notes.**
- II. **Hydrographic Reports.**
- III. **Navigational Warnings.**

SUPPLEMENTS.

- I. **Tracings**
- II. **Cumulative List of Australian Notices to Mariners.**
- III. **Cumulative List of Temporary and Preliminary Australian Notices to Mariners.**
- IV. **Temporary and Preliminary Notices in force.**
- V. **Amendments to Admiralty List of Lights and Fog Signals (Vol K),
Radio Signals (NP 281(2), 282, 283(2), 285, 286(4)) and Sailing
Directions (NP 9, 13, 14, 15, 33, 34, 35, 36, 39, 44, 51, 60, 61, 62, 100, 136).**

© Commonwealth of Australia 2018

This work is copyright. Apart from any use permitted under the Copyright Act 1968, no part may be reproduced by any process, adapted, communicated or commercially exploited without prior written permission from The Commonwealth represented by the Australian Hydrographic Office.

IMPORTANT NOTICE

This edition of Notices to Mariners includes all significant information affecting AHO products which the AHO has become aware of since the last edition. All reasonable efforts have been made to ensure the accuracy and completeness of the information, including third party information, on which these updates are based. The AHO regards third parties from which it receives information as reliable, however the AHO cannot verify all such information and errors may therefore exist. The AHO does not accept liability for errors in third party information.

GENERAL INSTRUCTIONS

The substance of these notices should be inserted on the charts affected.

Bearings are referred to the true compass and are reckoned clockwise from North; those relating to lights are given as seen by an observer from seaward.

Positions quoted in notices relate to WGS84 which is the horizontal datum for all charts produced by the Australian Hydrographic Office.

The range quoted for a light is its nominal range.

Depths are with reference to the chart datum of each chart. Heights are above mean high water springs or mean higher high water, as appropriate.

The capital letter (P) or (T) after the number of any notice denotes a preliminary or temporary notice respectively, which are contained separately at the end of the permanent notices.

REPORTING OF DANGERS

Mariners are particularly requested to notify the AUSTRALIAN HYDROGRAPHIC OFFICE, Locked Bag 8801 Wollongong, NSW 2500 (Fax 02-4223 6599, e-mail datapcentre@hydro.gov.au or, alternatively by filling in and submitting the [Hydrographic Notes](#) forms located on the web site – www.hydro.gov.au), immediately on the discovery of new dangers or suspected dangers to navigation. For changes or defects in aids to navigation notify AusSAR (Fax 02-6230 6868 or email rccaus@amsa.gov.au).

AUTHORISED USE

Copies of Australian notices are available free of charge from the Australian Hydrographic Office (AHO) website (www.hydro.gov.au) and through the eNotices (email) service (www.hydro.gov.au/enotices/enotices.htm).

Individual Notices may be copied for the purpose of inserting Notice substance on official charts and publications. Paper copies may be printed by chart agents and distributed to customers on a cost recovery basis. Participating chart agents are listed on the AHO website as providing a 'Paper Notices to Mariners' service (www.hydro.gov.au/webapps/jsp/agents/agents-list.jsp). Copies of the notices may not be sold for profit without prior written agreement.

NUMERICAL INDEX OF NOTICES TO MARINERS

Edition No 20

Notices	Aus Chart, INT Chart, ENC Cell, AHP, BA Pubs
849	Aus 203
850	Amendment to Australian National Tide Tables 2018 and 2019
851	Summer time
852	Aus 806
853	Aus 200, 201, 204, 209, 217, 809, 810, 813, 814
854	Aus 4604, 4622, INT 604, 622
855	Aus 237
856	Aus 236
857	Aus 230
858	Aus 4
859	Aus 316, 318, 725
860	Aus 327
861	Aus 130
862	Aus 485, 777, 778
863	Aus 135, 136
864	Aus 802
865	Aus 182
866	Aus 154
867	Aus 164
868	Aus 169, 171
869	SLB 101
870	Cumulative List of Australian Notices to Mariners - October 2018
871(T)	Aus 193
872(T)	Aus 4604, 4622, INT 604, 622
873(T)	Aus 301
874(T)	Aus 301, 4060, 4603, 4620, 4720, INT 60, 603, 620, 720
875(T)	Aus 237
876(T)	Aus 236
877(T)	Aus 235, 236
878(T)	Aus 236
879(T)	Aus 260, 261, 367, 822
880(T)	Aus 386, 387, 388, 673
881(T)	Aus 508, 625
882(T)	Aus 521, 644, 4620, 4621, INT 620, 621
883(T)	Aus 379, 505, 621
884(T)	Aus 387, 388, 543, 666, 673
885(T)	Aus 28
886(T)	Aus 328, 4723, 4725, INT 723, 725
887(T)	Aus 81
888(T)	Aus 112, 754
889(T)	Aus 327, 742
890(T)	Aus 4070, 4071, INT 70, 71
891(T)	Aus 357, 487, 4644, INT 644
892(T)	Aus 157
893(T)	Aus 154
894(T)	Aus 173, 795
895(T)	TEMPORARY AND PRELIMINARY NOTICES

NUMERICAL INDEX OF CHARTS AFFECTED

Edition No 20

Aus Chart	Notices
Aus 4	858
Aus 28	885(T)
Aus 81	887(T)
Aus 112	888(T)
Aus 130	861
Aus 135	863
Aus 136	863
Aus 154	866, 893(T)
Aus 157	892(T)
Aus 164	867
Aus 169	868
Aus 171	868
Aus 173	894(T)
Aus 182	865
Aus 193	871(T)
Aus 200	853
Aus 201	853
Aus 203	849
Aus 204	853
Aus 209	853
Aus 217	853
Aus 230	857
Aus 235	877(T)
Aus 236	856, 876(T), 877(T), 878(T)
Aus 237	855, 875(T)
Aus 260	879(T)
Aus 261	879(T)
Aus 301	873(T), 874(T)
Aus 316	859
Aus 318	859
Aus 327	860, 889(T)
Aus 328	886(T)
Aus 357	891(T)
Aus 367	879(T)
Aus 379	883(T)
Aus 386	880(T)
Aus 387	880(T), 884(T)
Aus 388	880(T), 884(T)
Aus 485	862
Aus 487	891(T)
Aus 505	883(T)
Aus 508	881(T)
Aus 521	882(T)
Aus 543	884(T)
Aus 621	883(T)
Aus 625	881(T)
Aus 644	882(T)
Aus 666	884(T)
Aus 673	880(T), 884(T)
Aus 725	859
Aus 742	889(T)
Aus 754	888(T)
Aus 777	862
Aus 778	862

Aus Chart	Notices
Aus 795	894(T)
Aus 802	864
Aus 806	852
Aus 809	853
Aus 810	853
Aus 813	853
Aus 814	853
Aus 822	879(T)
Aus 4060	874(T)
Aus 4070	890(T)
Aus 4071	890(T)
Aus 4603	874(T)
Aus 4604	854, 872(T)
Aus 4620	874(T), 882(T)
Aus 4621	882(T)
Aus 4622	854, 872(T)
Aus 4644	891(T)
Aus 4720	874(T)
Aus 4723	886(T)
Aus 4725	886(T)
SLB 101	869

INT Chart	Notices
INT 60	874(T)
INT 70	890(T)
INT 71	890(T)
INT 603	874(T)
INT 604	854, 872(T)
INT 620	874(T), 882(T)
INT 621	882(T)
INT 622	854, 872(T)
INT 644	891(T)
INT 720	874(T)
INT 723	886(T)
INT 725	886(T)

849 AUSTRALIA - Products - New Charts, New Editions, Withdrawn Charts

Australian Hydrographic Office

New Charts

<i>Chart</i>	<i>Title and Geographical limits</i>	<i>Scale</i>	<i>Publication Date</i>	<i>Remarks</i>
NIL				

New Electronic Navigation Chart (Aus ENC)

<i>Cell Name</i>	<i>Title</i>	<i>Publication Date</i>	<i>Remarks</i>
NIL			

New Editions and Withdrawn Charts

<i>Chart</i>	<i>Title</i>	<i>Scale</i>	<i>Publication Date</i>	<i>Remarks</i>
AUS 203 Edition 2	Australia - East Coast - New South Wales - Port Jackson (Western Sheet) Parramatta and Lane Cove Rivers Inset: Parramatta River	1:10 000 1:10 000	5 October 2018	New edition with general updating throughout; including latest bathymetric data. Chart Aus 203 Edition 1 dated 3 May 2013 is now superseded and must be withdrawn from use.

Chart permanently withdrawn

Charts listed above as withdrawn no longer meet chart carriage requirements and should be marked as "superseded" and replaced with the new chart/ new edition listed prior to passage through the area covered by the new chart.

When placing orders with a chart agent between notice of forthcoming edition and its publication, mariners should advise whether their order pertains to the current edition or the new edition.

For further details refer to the AHO website at www.hydro.gov.au for new edition and new chart stock arrival information.

850 AUSTRALIA - Product - Amendment to Australian National Tide Tables 2018 and 2019
 Australian Hydrographic Service

ANTT 2018

Page 358

Amend Abbot Point To Chart Datum AUS 255 NE 01 JUN 2018 0.0

Page 359

Amend Cape Voltaire To Chart Datum AUS 729 NE 10 AUG 2018 SUBTRACT 0.4

Page 360

Amend Eden To Chart Datum AUS 192 NE 18 MAY 2018 0.0

Page 364

Amend Port Kembla To Chart Datum AUS 194 NE 10 Aug 2018 0.0

Page 365

Amend Port Pirie To Chart Datum AUS 136 NE 07 SEP 2018 0.0

Page 366

Amend Sydney To Chart Datum AUS 201 NE 10 Aug 2018 0.0

Page 367

Amend Weipa To Chart Datum AUS 4 NE 29 JUN 2018 0.0

Amend Whyalla To Chart Datum AUS 136 NE 07 SEP 2018 0.0

Page 368

Amend Yamba To Chart Datum AUS 812 NE 21 SEP 2018 0.0

ANTT 2019

Page 359

Amend Cape Voltaire To Chart Datum AUS 729 NE 10 AUG 2018 SUBTRACT 0.4

Page 364

Amend Port Kembla To Chart Datum AUS 194 NE 10 Aug 2018 0.0

850 AUSTRALIA - Product - Amendment to Australian National Tide Tables 2018 and 2019

Page 365

Amend Port Pirie To Chart Datum AUS 136 NE 07 SEP 2018 0.0

Page 366

Amend Sydney To Chart Datum AUS 201 NE 10 Aug 2018 0.0

Page 367

Amend Weipa To Chart Datum AUS 4 NE 29 JUN 2018 0.0*Amend* Whyalla To Chart Datum AUS 136 NE 07 SEP 2018 0.0

Page 368

Amend Yamba To Chart Datum AUS 812 NE 21 SEP 2018 0.0**851 AUSTRALIA - Summer time**

Australian Government

Clocks will be wound forward one hour at 0200 local time on 7 OCT 2018 in the Australian Capital Territory, New South Wales, South Australia, Victoria and Tasmania.

No changes will be made in Queensland, Northern Territory and Western Australia.

852 AUSTRALIA - NEW SOUTH WALES - Merimbula Bay - Artificial reef

Subcon

Aus 806 [386/2018]

Insert fish haven with minimum depth, 17m, centred on

36° 54'.85 S

149° 56'.26 E

853 AUSTRALIA - NEW SOUTH WALES - Port Jackson to Jervis Bay - Historic wreck

Australian Hydrographic Office

Aus 200 [805/2018]Insert magenta legend, *Historic Wk (see Note)* 33° 49'.712 S 151° 16'.208 E**Aus 201 [NE 10/8/2018]**Insert magenta legend, *Historic Wk (see Note)* 33° 49'.712 S 151° 16'.208 E**Aus 204 [891/2017]**Replace legend Wk, with magenta legend, *Historic Wk (see Note)* 33° 33'.0 S 151° 14'.8 E**Aus 209 [240/2017]**Insert magenta legend, *Historic Wk (see Note)* 32° 43'.866 S 152° 11'.561 E**Aus 217 [860/2015]**

Insert accompanying note 33° 37'.706 S 151° 15'.688 E

Replace legend Wk, with magenta legend, *Historic Wk (see Note)*

33° 32'.94 S 151° 14'.93 E

Aus 809 [806/2018]Insert magenta legend, *Historic Wk (see Note)* 32° 43'.87 S 152° 11'.56 E**Aus 810 [850/2017]**Insert magenta legend, *Historic Wk (see Note)* 32° 43'.87 S 152° 11'.56 E**Aus 813 [773/2017]**Insert magenta legend, *Historic Wk (see Note)* 28° 11'.8 S 153° 34'.2 E**Aus 814 [553/2018]**Insert magenta legend, *Historic Wk (see Note)* 28° 11'.8 S 153° 34'.2 E**854 PACIFIC OCEAN - Lyra Reef - Light buoy northeastwards**

JAMSTEC

Aus 4604 (INT 604) [519/2018]Insert out of position special pillar light buoy, *Fl. Y. 4s*, without topmark 00° 01'.0 N 156° 02'.5 E**Aus 4622 (INT 622) [714/2018]**Insert out of position special pillar light buoy, *Fl. Y. 4s*, without topmark 00° 01'.0 N 156° 02'.5 E**855 AUSTRALIA - QUEENSLAND - Brisbane River - Fisherman Island - Maintained depth**

Maritime Safety Queensland Notice 378/2018

Aus 237 [809/2018]Amend legend to *12.0m* 27° 23'.41 S 153° 09'.48 E**856 AUSTRALIA - QUEENSLAND - Moreton Bay - Mud Island - Wreck salvaged southeastwards**

Maritime Safety Queensland Notice 386/2018

Aus 236 [811/2018]

Delete out of position safe clearance depth, 5m, and enclosing danger circle with legend, Wk 27° 22'.8 S 153° 16'.8 E

857 AUSTRALIA - QUEENSLAND - Southport - Pelican Beach - Depth

Maritime Safety Queensland

Aus 230 [712/2018]Insert depth, *1.4m*, and extend contour E to enclose 27° 58'.535 S 153° 25'.301 E

Delete depth, 3m 27° 58'.52 S 153° 25'.30 E

858 AUSTRALIA - QUEENSLAND - Weipa - Albatross Bay - Nomenclature

L Hatchman

Aus 4 [770/2018]

Replace	legend, Hutchman Point, with legend, <i>Hatchman Point</i>	12° 34'.9 S	141° 37'.5 E
---------	--	-------------	--------------

859 AUSTRALIA - NORTHERN TERRITORY - Joseph Bonaparte Gulf - Fog signal

Australian Hydrographic Office

Aus 316 [728/2017]

Amend	legend to <i>Mo(U)15s Horn</i>	14° 14'.7 S	129° 20'.3 E
-------	--------------------------------	-------------	--------------

Aus 318 [61/2018]

Amend	legend to <i>Blacktip Mo(U)15s 10M Horn Racon (B)</i>	13° 53'.8 S	128° 27'.6 E
-------	---	-------------	--------------

Aus 725 [728/2017]

Amend	legend to <i>Mo(U)15s Horn</i>	14° 14'.7 S	129° 20'.3 E
-------	--------------------------------	-------------	--------------

860 AUSTRALIA - WESTERN AUSTRALIA - Rankin Bank - Pipeline

Woodside Energy Ltd

Aus 327 [563/2018]

Insert	supply pipeline with legend, <i>Gas (see Note)</i> , between	19° 49'.70 S	115° 39'.51 E
		19° 48'.88 S	115° 40'.82 E
		19° 48'.11 S	115° 42'.32 E
		19° 46'.88 S	115° 45'.00 E
		19° 44'.98 S	115° 47'.74 E
		19° 44'.25 S	115° 48'.32 E
		19° 43'.19 S	115° 48'.72 E
		19° 41'.91 S	115° 49'.86 E

861 AUSTRALIA - SOUTH AUSTRALIA - Port Adelaide - North Arm - Historic wreck

Australian Hydrographic Office

Aus 130 [487/2018]

Insert	magenta legend, <i>Historic Wk (see Note)</i>	34° 48'.750 S	138° 32'.376 E
--------	---	---------------	----------------

862 AUSTRALIA - SOUTH AUSTRALIA - Spencer Gulf - Franklin Harbor to Walrus Rock - Nav aids

Department of Planning, Transport and Infrastructure SA

Aus 485 [817/2018]

Amend	light beacon to <i>Fl.5M</i>	33° 45'.3 S	136° 59'.3 E
-------	------------------------------	-------------	--------------

Aus 777 [817/2018]

Insert	west cardinal light beacon, <i>Q(9)15s</i> , with topmark	33° 59'.71 S	137° 29'.74 E
--------	---	--------------	---------------

Amend	light beacon to <i>Fl.3s 5M</i>	33° 45'.3 S	136° 59'.3 E
-------	---------------------------------	-------------	--------------

Delete	beacon	33° 59'.6 S	137° 29'.9 E
--------	--------	-------------	--------------

Aus 777 (Franklin Harbor) [817/2018]

Amend	light beacon to <i>Fl.3s 5M</i>	33° 45'.30 S	136° 59'.29 E
-------	---------------------------------	--------------	---------------

Aus 778 [818/2018]

Insert	west cardinal light beacon, <i>Q(9)15s</i> , with topmark	33° 22'.27 S	137° 47'.40 E
--------	---	--------------	---------------

Delete	beacon	33° 22'.3 S	137° 47'.3 E
--------	--------	-------------	--------------

863 AUSTRALIA - SOUTH AUSTRALIA - Whyalla - Pilot boarding place; Port limits

Flinders Ports

Note: Aus 778 will be updated in due course.**Aus 135 (Whyalla) [818/2018]**

Insert	accompanying block	33° 03'.70 S	137° 38'.85 E
--------	--------------------	--------------	---------------

Aus 136 [NE 7/9/2018]

Insert	accompanying block	33° 03'.60 S	137° 39'.15 E
--------	--------------------	--------------	---------------

864 AUSTRALIA - VICTORIA - Anser Group - Historic wreck

Geoscience Australia

Aus 802 [398/2018]

Replace	depth, 42m, with depth, 40m	39° 08'.7 S	146° 18'.0 E
---------	-----------------------------	-------------	--------------

865 AUSTRALIA - VICTORIA - Corner Inlet - Barry Beach - Drying height

Gippsland Ports

Aus 182 (Barry Beach Marine Terminal) [819/2018]

Insert	drying height, 0.7m, enclosed by contour	38° 42'.505 S	146° 22'.991 E
--------	--	---------------	----------------

Delete	depth, 3.7m	38° 42'.51 S	146° 23'.01 E
--------	-------------	--------------	---------------

866 AUSTRALIA - VICTORIA - Yarra River - Victoria Dock - Topmark

Victorian Ports Corporation (Melbourne) Notice 254/2018

Aus 154 [822/2018]

Insert	port lateral topmark	37° 49'.09 S	144° 55'.90 E
--------	----------------------	--------------	---------------

867 AUSTRALIA - TASMANIA - Devonport - Depths

HydroSurvey Australia

Aus 164 (Devonport) [823/2018]

Insert	accompanying block	41° 11'.2 S	146° 22'.2 E
--------	--------------------	-------------	--------------

868 AUSTRALIA - TASMANIA - Fulham Island - Jetty; light

Marine and Safety Tasmania Notice M160/2018

Aus 169 (Blackman Bay) [724/2018]

Insert	continuous line, between	42° 54'.671 S	147° 47'.239 E
--------	--------------------------	---------------	----------------

		42° 54'.681 S	147° 47'.235 E
--	--	---------------	----------------

		42° 54'.675 S	147° 47'.205 E
--	--	---------------	----------------

	light, F.Bu	42° 54'.671 S	147° 47'.239 E
--	-------------	---------------	----------------

Aus 171 [777/2018]

Insert	light, F.Bu	42° 54'.67 S	147° 47'.24 E
--------	-------------	--------------	---------------

869 SOLOMON ISLANDS - Marau Sound - North East Entrance - Depth area

Australian Hydrographic Office

SLB 101 (Marau Sound) [826/2018]

Insert	contour to enclose depth, 16.5m	09° 46'.65 S	160° 50'.69 E
--------	---------------------------------	--------------	---------------

870 AUSTRALIA - Cumulative List of Australian Notices to Mariners - October 2018

Australian Hydrographic Office

The Cumulative List of Australian Notices to Mariners - October 2018 is issued as an [accompanying supplement](#). It lists all permanent notices affecting charts in the Area of Australian Charting Responsibility published in the preceding two years since Edition 20 of 2016 dated 7 October 2016, and includes Edition 20 of 2018 dated 5 October 2018. It will be revised in April 2019.

A supplement is available on the website which is revised fortnightly.

871(T)/2018 AUSTRALIA - NEW SOUTH WALES - Jervis Bay - Hyams Beach - Light buoy

Former Notice - 210(T)/2018 is cancelled
Australian Maritime Warfare Centre

A special light buoy, *Fl. Y. 5s*, exists in position 35° 06'.23 S 150° 42'.85 E.

Chart temporarily affected - Aus 193

872(T)/2018 PACIFIC OCEAN - Scientific instruments

Former Notice - 424(T)/2015 is cancelled
JAMSTEC

Cancel this notice on receipt.

Chart formerly affected - Aus 4604 (INT 604) - Aus 4622 (INT 622)

873(T)/2018 AUSTRALIA - QUEENSLAND - Boyd Point - Exclusion zone removed

Former Notice - 462(T)/2017 is cancelled
Maritime Safety Queensland

Cancel this notice on receipt.

Chart formerly affected - Aus 301

874(T)/2018 AUSTRALIA - QUEENSLAND - Boyd Point - Mooring buoys removed

Former Notice - 403(T)/2018 is cancelled
Maritime Safety Queensland

Cancel this notice on receipt.

Chart formerly affected - Aus 301 - Aus 4060 (INT 60) - Aus 4603 (INT 603) - Aus 4620 (INT 620) - Aus 4720 (INT 720)

875(T)/2018 AUSTRALIA - QUEENSLAND - Brisbane River - Fisherman Islands - Harbour works complete

Former Notice - 1205(T)/2016 is cancelled
Maritime Safety Queensland

Cancel this notice on receipt.

Chart formerly affected - Aus 237

876(T)/2018 AUSTRALIA - QUEENSLAND - Manly Boat Harbour - Drilling operations completed

Former Notice - 111(T)/2018 is cancelled
Maritime Safety Queensland

Cancel this notice on receipt.

Chart formerly affected - Aus 236

877(T)/2018 AUSTRALIA - QUEENSLAND - Moreton Bay - Dredging completed

Former Notice - 689(T)/2018 is cancelled
Maritime Safety Queensland

Cancel this notice on receipt.

Chart formerly affected - Aus 235 - Aus 236

878(T)/2018 AUSTRALIA - QUEENSLAND - Moreton Bay - Manly Boat Harbour - Dredging operations

Former Notice - 529(T)/2018 is cancelled

Maritime Safety Queensland Notice 219(T)/2018

Cancel this notice on receipt.

Chart formerly affected - Aus 236**879(T)/2018 AUSTRALIA - QUEENSLAND - Shoalwater Bay - Live firing**

Maritime Safety Queensland Notice 364(T)/2018

Live firing will be conducted in the Shoalwater Bay training area during the period 10 to 28 October 2018.

A marine danger area extends to all internal waters bounded by the following positions:

22° 23'.84 S 150° 18'.02 E

22° 24'.75 S 150° 17'.35 E

22° 35'.87 S 150° 28'.80 E

22° 36'.95 S 150° 36'.82 E

22° 31'.07 S 150° 34'.01 E

22° 24'.33 S 150° 26'.87 E

22° 21'.11 S 150° 17'.03 E.

All waters, creeks, beaches and other areas within the declared marine danger area are not available for access.

There will be a safe anchorage available at Freshwater, Port Clinton, West Water Port Clinton, South Arm Port Clinton, Pearl Bay, Island Head Creek and Supply Bay Townshend Island.

Mariners are advised to keep clear of this area throughout the above times.

Chart temporarily affected - Aus 260 - Aus 261 - Aus 367 - Aus 822**880(T)/2018 PAPUA NEW GUINEA - Dampier Strait to Isumrud Strait - Lights unlit**

National Maritime Safety Authority PNG Notice 1/2018, 3/2018, Warning 7/2018

The following lights are unlit;

Position	Remarks
5° 53'.27 S 148° 08'.70 E	Fl.R.2s
4° 50'.89 S 145° 48'.33 E	Fl(2) 6s 22m 10M

Chart temporarily affected - Aus 386 - Aus 387 - Aus 388 - Aus 673**881(T)/2018 PAPUA NEW GUINEA - Isulailai Point - Light beacon unlit**

National Maritime Safety Authority PNG Warning 11/2018

The light beacon, Fl(2)5s 17m 9M (10° 33'.63 S 150° 41'.72 E), is unlit.

Chart temporarily affected - Aus 508 - Aus 625**882(T)/2018 PAPUA NEW GUINEA - Oro Bay - Light unlit**

National Maritime Safety Authority PNG Warning 13/2018

The rear lead light, Fl.10s 134m 18M (8° 54'.26 S 148° 28'.25 E), is unlit.

Chart temporarily affected - Aus 521 - Aus 644 - Aus 4620 (INT 620) - Aus 4621 (INT 621)**883(T)/2018 PAPUA NEW GUINEA - Vabukori - Light relit**

Former Notice - 264(T)/2017 is cancelled

National Maritime Safety Authority PNG Warning 14/2018

Cancel this notice on receipt.

Chart formerly affected - Aus 379 - Aus 505 - Aus 621

884(T)/2018 PAPUA NEW GUINEA - Vitiaz Strait - Light relit*Former Notice - 691(T)/2018 is cancelled*

National Maritime Safety Authority PNG Warning 7/2018

Cancel this notice on receipt.

Chart formerly affected - Aus 387 - Aus 388 - Aus 543 - Aus 666 - Aus 673**885(T)/2018 AUSTRALIA - NORTHERN TERRITORY - Darwin - Elizabeth River - Light buoys unlit**

Department of Infrastructure, Planning and Logistics NT Notice 49(T)/2018

The following light buoys are unlit:

<i>Position</i>	<i>Remarks</i>
12° 31'.48 S 130° 56'.06 E	special pillar light buoy, <i>Fl. Y. 2s</i>
12° 31'.53 S 130° 55'.97 E	special spar light buoy, <i>Fl. Y. 2.5s</i>
12° 31'.54 S 130° 55'.94 E	special spar light buoy, <i>Fl. Y. 2.5s</i>
12° 31'.56 S 130° 55'.89 E	special spar light buoy, <i>Fl. Y. 2.5s</i>
12° 31'.57 S 130° 55'.84 E	special spar light buoy, <i>Fl. Y. 2.5s</i>

Chart temporarily affected - Aus 28**886(T)/2018 AUSTRALIA - WESTERN AUSTRALIA - Barrow Island - Drill rig westwards**MODU *ENSCO 107*Drill rig *Ensko 107* is conducting drilling operations in position 20° 44'.02 S 114° 58'.44 E.**Chart temporarily affected - Aus 328 - Aus 4723 (INT 723) - Aus 4725 (INT 725)****887(T)/2018 AUSTRALIA - WESTERN AUSTRALIA - Geraldton - Light buoy off station northwestwards**

Mid West Ports Notice 6/2018

The isolated danger light buoy, *Fl(2)5s* (28° 43'.88 S 114° 33'.24 E), is off station; an isolated danger light buoy, *Fl(2)4s AIS*, exists in situ.**Chart temporarily affected - Aus 81****888(T)/2018 AUSTRALIA - WESTERN AUSTRALIA - Scarborough - Subsea operations westwards***Former Notice - 843(T)/2018 is cancelled*

Australian Maritime Safety Authority Auscoast Warning 225/2018

SPV *Ile De Brehat* is conducting subsea operations in position 31° 53'.70 S 115° 41'.90 E.

Mariners are advised to navigate with caution. 1M clearance requested.

Chart temporarily affected - Aus 112 - Aus 754**889(T)/2018 AUSTRALIA - WESTERN AUSTRALIA - Varanus Island - Drill rig northeastwards moved***Former Notice - 752(T)/2018 is cancelled*MODU *ENSCO 107*

Cancel this notice on receipt.

Chart formerly affected - Aus 327 - Aus 742**890(T)/2018 INDIAN OCEAN - Sumatera - Scientific instruments recovered***Former Notice - 454(T)/2015 is cancelled*

JAMSTEC

Cancel this notice on receipt.

Chart formerly affected - Aus 4070 (INT 70) - Aus 4071 (INT 71)

891(T)/2018 AUSTRALIA - VICTORIA - Cape Conran - Drill rig southwards*Former Notice - 756(T)/2018 is cancelled*MODU *Ocean Monarch*Drill rig *Ocean Monarch* is conducting drilling operations in position 38° 36'.73 S 148° 31'.33 E.**Chart temporarily affected - Aus 357 - Aus 487 - Aus 4644 (INT 644)****892(T)/2018 AUSTRALIA - VICTORIA - Port Phillip - Indented Head - Beacon restored***Former Notice - 225(T)/2018 is cancelled*

Parks Victoria Notice 283/2018

Cancel this notice on receipt.

Chart formerly affected - Aus 157**893(T)/2018 AUSTRALIA - VICTORIA - Port Phillip - River Yarra - Yarraville - Harbour works**

Victorian Ports Corporation (Melbourne) Notice 286(T)/2018

Rehabilitation works are in progress at Yarraville No6 (37° 49'.28 S 144° 54'.31 E).

The berth is closed for the duration of the works.

Mariners are advised to navigate with caution in the area.

Chart temporarily affected - Aus 154**894(T)/2018 AUSTRALIA - TASMANIA - D'Entrecasteaux Channel - Woodbridge - Harbour works; light unlit**

Marine and Safety Tasmania Notice M159/2018

Works associated with the replacement of the jetty (43° 09'.58 S 147° 14'.52 E) are in progress.

The light, *F.Bu.3M* (43° 09'.58 S 147° 14'.52 E), is unlit.

Mariners are advised to navigate with caution in the area.

Chart temporarily affected - Aus 173 - Aus 795

895(T)/2018 AUSTRALIA - TEMPORARY AND PRELIMINARY NOTICES

Former Notice - 660(T)/2018 is cancelled
Australian Hydrographic Office

<i>Notice</i>	<i>Charts affected</i>	<i>Locality and Subject</i>
		BASS STRAIT
		<i>King Island</i>
89/2018	Aus789	Scientific instrument
434/2014	Aus357 4644	Light unlit
		CORAL SEA
		<i>Bampton Reef</i>
639/2015	Aus4604	Light buoy off station northwards
		<i>Diamond Islets</i>
225/2017	Aus614 4620 4621	Shoaling
		<i>Mellish Reef</i>
690/2018	Aus4604 4621	Light buoy off station northwestwards
		<i>Portlock Reefs</i>
989/2017	Aus377	Reefs
		NEW SOUTH WALES
		<i>Batemans Bay</i>
965/2016	Aus191	Dredging operations
		<i>Ben Buckler</i>
909/2017	Aus197 200 808	Scientific instruments southeastwards
		<i>Callo Point</i>
573/2018	Aus806	Exclusion zone
		<i>Cape Byron</i>
709/2016	Aus813	Obstructions eastwards
		<i>Clarence River</i>
43/2015	Aus222	Obstructions
213/2017	Aus222 812 813	Harbour works
		<i>Jervis Bay</i>
515/2017	Aus193	Light unlit
71/2018	Aus193	Beacon destroyed
574/2018	Aus193	Light buoys
779/2018	Aus193	Light buoy off station
871/2018	Aus193	Light buoy
		<i>Kiama</i>
1029/2017	Aus191 489 808 4643	Light range reduced
		NEW ZEALAND - NOUVELLE CALEDONIE - Fiji Islands
831/2017	Aus197 198 489 609 808 4060 4601 4602 4604 4643	Cable operations
		<i>Nobbys Head</i>
682/2018	Aus489 809	Obstructions eastwards
		<i>Port Jackson</i>
65/2017	Aus200 202	Harbour works
706/2017	Aus200 202	Scientific instruments
323/2018	Aus200 202	Harbour works; exclusion zone
400/2018	Aus200 203	Shoaling
		<i>Port Kembla</i>
400/2016	Aus194	Exclusion zone

895(T)/2018 AUSTRALIA - TEMPORARY AND PRELIMINARY NOTICES

<i>Notice</i>	<i>Charts affected</i>	<i>Locality and Subject</i>
966/2016	Aus192	<i>Twofold Bay</i> Berth damaged
1035/2016	Aus192	Scientific instruments
559/2017	Aus192	Scientific instruments
491/2018	Aus191 807 4643	<i>Ulladulla</i> Light altered
NORTHERN TERRITORY		
413/2018	Aus23 722	<i>Apsley Strait</i> Light buoy off station
414/2018	Aus22 309 310 722	<i>Bathurst Island</i> Survey and drilling operations
182/2017	Aus25	<i>Darwin</i> Light buoy unlit
119/2018	Aus24	Lights unlit
885/2018	Aus28	Light buoys unlit
894/2015	Aus28	<i>East Arm</i> Lights
1193/2014	Aus20	<i>East Vernon Island</i> Obstruction
461/2018	Aus29 309 316 722 4721	<i>Fish Reef</i> Light unlit
837/2018	Aus316 724	<i>Fog Bay</i> Fish Aggregating Device
QUEENSLAND		
659/2016	Aus255 825 826	<i>Abbot Point</i> Scientific instruments
369/2017	Aus255 826	Light beacon destroyed
370/2017	Aus255 826	Navais off station; navais destroyed; depths unreliable; obstructions
980/2017	Aus255	Mooring buoys
745/2017	Aus269	<i>Airlie Beach</i> Wreck
884/2016		<i>Bowen</i> Light beacon destroyed
968/2016	Aus268	Harbour works
326/2017	Aus268	Light buoy off station
461/2017	Aus268	Obstruction
492/2018	Aus268 825 826	Harbour works
159/2018	Aus244 245 246 271	<i>Boyne River to Gladstone</i> Dredging operations
25/2018	Aus490 816 817	<i>Breaksea Spit</i> Foul ground
213/2018	Aus236	<i>Bribie Island</i> Shoaling
27/2018	Aus236	<i>Brisbane</i> Harbour works

895(T)/2018 AUSTRALIA - TEMPORARY AND PRELIMINARY NOTICES

<i>Notice</i>	<i>Charts affected</i>	<i>Locality and Subject</i>
66/2017	Aus238	<i>Brisbane River</i> Light unlit
176/2017	Aus238	Scientific instrument
519/2017	Aus237	Virtual AIS
561/2017	Aus238	Light buoys
611/2017	Aus238	Harbour works
324/2018	Aus238	Harbour works
454/2018	Aus236 237	Light buoy
494/2018	Aus238	Harbour works
630/2018	Aus238	Harbour works
727/2018	Aus238	Harbour works
781/2018	Aus238	Wreck
605/2016	Aus242	<i>Bundaberg</i> Shoaling
252/2017	Aus242	Navais off station
520/2017	Aus242	Harbour works
707/2017	Aus242	Anchoring prohibited
793/2017	Aus242	Dredging operations
455/2018	Aus242	Light beacon
606/2016	Aus490 818 819	<i>Bunker Group</i> Foul ground westwards
250/2018	Aus242	<i>Burnett River</i> Wreck
253/2017	Aus262 263	<i>Cairns</i> Shoaling
665/2017	Aus263 264	Dredging operations
1090/2017	Aus263 264	Wreck
576/2018	Aus262 263 830	Light unreliable
683/2018	Aus262 263 830	Dredging operations
1214/2013	Aus826 827	<i>Cape Bowling Green</i> Scientific instrument
1034/2017	Aus826 827	Light buoy off station eastwards
708/2017	Aus270	<i>Cape Flattery</i> Shoaling
828/2018	Aus256 827	<i>Cleveland Bay</i> Light buoy withdrawn
926/2016	Aus270	<i>Cooktown</i> Obstruction
728/2018	Aus270	Shoaling
577/2018	Aus831	<i>Daintree River</i> Light buoy withdrawn
418/2017	Aus252 253	<i>Daydream Island</i> Lights unlit; light buoys established
834/2017	Aus293 299	<i>Ellis Channel</i> Light buoy off station
28/2018	Aus281	<i>First Three Mile Opening</i> Light unreliable
72/2018	Aus830	<i>Fitzroy Island</i> Light buoys
		<i>Fitzroy River</i>

895(T)/2018 AUSTRALIA - TEMPORARY AND PRELIMINARY NOTICES
661/2016 Aus819 Scientific instrument

<i>Notice</i>	<i>Charts affected</i>	<i>Locality and Subject</i>
750/2017	Aus826	<i>Flagstaff Bay</i> Light unlit
782/2018	Aus615	<i>Flinders Reef</i> Shoaling
830/2018	Aus235 236	Light buoy withdrawn
783/2018	Aus249 250	<i>Freshwater Point to Slade Islet</i> Scientific instruments
1182/2016	Aus816	<i>Gardner Bank</i> Wreck
579/2014	Aus245 246 819	<i>Gladstone</i> Scientific instruments
568/2016	Aus245 271	Harbour works
68/2017	Aus244 245 271	Harbour works
291/2017	Aus245	Shoaling
784/2018	Aus245 246	<i>Gladstone Harbour</i> Scientific instruments
521/2017	Aus258	<i>Gladys Inlet</i> Light buoy off station
564/2017	Aus268 825	<i>Gloucester Passage</i> Light buoys off station
361/2018	Aus230	<i>Gold Coast</i> Scientific instruments
110/2018	Aus230	<i>Gold Coast Seaway</i> Shoaling
633/2018	Aus230	Light buoy
406/2018	Aus230	<i>Gold Coast Seaway to Narrowneck Reef</i> Dredging operations
523/2017	Aus821 824 825	<i>Great Barrier Reef</i> Shoaling
664/2016	Aus241	<i>Great Sandy Strait</i> Scientific instrument
971/2016	Aus241 817	Shoaling
372/2017	Aus241 817	Light buoys
982/2017	Aus240	Light beacon destroyed
1035/2017	Aus240	Beacon destroyed
214/2018	Aus240	Light beacon destroyed
785/2018	Aus240	Light beacon unlit
831/2018	Aus240	Beacon destroyed
566/2017	Aus254	<i>Hamilton Island</i> Harbour works
401/2016	Aus250	<i>Hay Point</i> Scientific instrument
665/2016	Aus249 250 823	Light unlit
20/2017	Aus250	Obstructions
292/2017	Aus249 823	Obstruction
729/2018	Aus249 250	Bed levelling operations
578/2018	Aus817	<i>Hervey Bay</i> Wreck

895(T)/2018 AUSTRALIA - TEMPORARY AND PRELIMINARY NOTICES

<i>Notice</i>	<i>Charts affected</i>	<i>Locality and Subject</i>
293/2017	Aus259 267	<i>Hinchinbrook Channel</i> Light buoy unlit; light beacon unlit
215/2018	Aus259	Wreck
362/2018	Aus259	Light buoy off station
495/2018	Aus267	Light buoy off station
786/2018	Aus259	Light buoy off station
1369/2015	Aus828	<i>Hinchinbrook Island</i> Light buoy withdrawn
1036/2017	Aus240 815 817	<i>Inskip Point</i> Light unlit
67/2016	Aus6	<i>Karumba</i> Shoaling
363/2018	Aus6	Dredging operations
685/2018	Aus6	Shoaling
872/2017	Aus270 280 281 833 834	<i>LADS Passage</i> Shoaling
917/2017	Aus252	<i>Laguna Quays</i> Shoaling; nav aids
743/2015	Aus259 267	<i>Lucinda</i> Light buoy off station; light buoy unlit
375/2017	Aus259 267	Shoaling
377/2017	Aus250	<i>Mackay</i> Traffic signal station unlit
162/2018	Aus250	Harbour works
379/2014	Aus256	<i>Magnetic Island</i> Scientific instrument
919/2017	Aus256	Shoaling
635/2018	Aus236	<i>Manly Boat Harbour</i> Dredging operations
528/2018	Aus235	<i>Mooloolaba Harbour</i> Light buoy
740/2014	Aus236	<i>Moreton Bay</i> Wreck
1122/2016	Aus235 236	Light buoy
111/2017	Aus236	Beacon destroyed
112/2017	Aus236	Wreck
328/2017	Aus236	Light beacon destroyed
421/2017	Aus236	Light beacon destroyed
422/2017	Aus236	Light unlit
468/2017	Aus236	Cable laying operations
526/2017	Aus236	Light beacon damaged
291/2018	Aus236	Beacon damaged
408/2018	Aus235 236	Scientific instruments
530/2018	Aus236	Scientific instrument
531/2018	Aus236	Light Buoy; Wreck
636/2018	Aus236	Light beacon destroyed
686/2018	Aus238	Survey operations
687/2018	Aus236	Shoaling
688/2018	Aus236	Harbour works northwestwards
731/2018	Aus236	Ship to ship transfer
732/2018	Aus235 236	Shoaling

895(T)/2018 AUSTRALIA - TEMPORARY AND PRELIMINARY NOTICES

<i>Notice</i>	<i>Charts affected</i>	<i>Locality and Subject</i>
467/2016 470/2017	Aus816 Aus816	<i>North Gardner Bank</i> Wreck Foul ground
874/2017	Aus819	<i>One Tree Island</i> Scientific instrument
667/2017	Aus367 490 820	<i>Peaked Island</i> Search and rescue exercise northeastwards
217/2018	Aus813 814	<i>Point Danger</i> Scientific instrument
987/2017	Aus270	<i>Port Douglas</i> Dredging operations
733/2018	Aus252 253 269	<i>Port of Airlie</i> Harbour works
379/2017	Aus252 824	<i>Proserpine River</i> Light beacon unlit
714/2016 1095/2017	Aus235 236 Aus236	<i>Pumicestone Channel</i> Scientific instruments Marine farm; light buoy
376/2015 164/2018	Aus294 Aus294	<i>Red Island Point</i> Light buoys unlit Wreck
615/2017	Aus829 830	<i>Russell Heads</i> Light withdrawn
879/2018	Aus260 261 367 822	<i>Shoalwater Bay</i> Live firing
570/2017 638/2018 639/2018	Aus252 253 269 Aus253 269 Aus252 253 269 824	<i>Shute Harbour</i> Lights; harbour works completed Light beacons destroyed Drilling operations
833/2016	Aus293 299	<i>Thursday Island</i> Dolphin damaged
469/2016 513/2016 380/2017 572/2017 756/2017 838/2017 926/2017 117/2018 642/2018	Aus257 Aus257 Aus256 827 Aus257 Aus256 Aus257 Aus256 827 Aus256 Aus256 257 827	<i>Townsville</i> Harbour works Harbour works Scientific instruments Dredging operations Diving operations Harbour works Light beacon destroyed Light beacon unlit Dredging operations
1274/2013	Aus831 832	<i>Two Islands</i> Wreck
330/2018	Aus241	<i>Urangan Harbour</i> Dredging operations; harbour works

895(T)/2018 AUSTRALIA - TEMPORARY AND PRELIMINARY NOTICES

<i>Notice</i>	<i>Charts affected</i>	<i>Locality and Subject</i>
1257/2016	Aus4	<i>Weipa</i> Harbour works
179/2017	Aus4	Light buoy off station
33/2018	Aus4	Light beacon destroyed
255/2018	Aus4 301 701	Scientific instruments
293/2018	Aus4	Dredging operations
411/2018	Aus4	Exclusion zone
643/2018	Aus4 701	Shoaling
301/2016	Aus252 253 824	<i>Whitsunday Island</i> Wreck
34/2018	Aus252 253 269 824	<i>Whitsunday Passage</i> Wreck
473/2017	Aus240 815 817	<i>Wide Bay</i> Shoaling; navline
SOUTH AUSTRALIA		
700/2018	Aus130 137	<i>Adelaide</i> Bridge works
427/2018	Aus126 347 780	<i>Backstairs Passage</i> Cable operations
173/2018	Aus127	<i>Cape Jaffa</i> Shoaling
436/2017	Aus485 780	<i>Fleurieu Peninsula</i> Hulk; prohibited area
794/2018	Aus342	<i>Flinders Island</i> Light unlit
754/2018	Aus125	<i>Gleneelg</i> Shoaling; dredging operations
123/2018	Aus139 781	<i>Gulf St Vincent</i> Artificial reef
653/2018	Aus130 137 138	<i>Gulf of St Vincent</i> Scientific instruments
1101/2017	Aus777	<i>Lucky Bay</i> Harbour works
720/2008	Aus137	<i>Port Adelaide</i> Shoaling
1048/2016	Aus130 485 781	Obstruction westwards
1221/2016	Aus130 138	Light beacon destroyed
620/2016	Aus136	<i>Port Pirie</i> Harbour works
438/2017	Aus132 778	<i>Snapper Point to Douglas Bank</i> Shoaling
755/2018	Aus120 122	<i>Thevenard</i> Harbour works
585/2017	Aus150 151	<i>Western Port</i> Beacon removed; buoy established
		<i>Whyalla</i>

895(T)/2018 **AUSTRALIA - TEMPORARY AND PRELIMINARY NOTICES**
485/2017 Aus135 Light beacons destroyed

<i>Notice</i>	<i>Charts affected</i>	<i>Locality and Subject</i>
		TASMAN SEA
109/2018	Aus4601	<i>Tasman Basin</i> Light buoy off station
		TASMANIA
504/2018	Aus169	<i>Blackman Bay</i> Wreck
1009/2016	Aus173 795 796	<i>Bruny Island</i> Scientific instruments southeastwards
845/2018	Aus163	<i>Burnie</i> Scientific instrument
894/2018 705/2018	Aus173 795 Aus174	<i>D'Entrecasteaux Channel</i> Harbour works; light unlit Harbour Works
944/2016 263/2018	Aus164 Aus164	<i>Devonport</i> Light beacon destroyed Shoaling
1010/2016	Aus767 798	<i>Eddystone Point</i> Scientific instruments southeastwards
1011/2016	Aus793	<i>Flying Cloud Point</i> Scientific instruments westwards
576/2012	Aus171 796	<i>Frederick Henry Bay</i> Scientific instruments
798/2018	Aus790	<i>Hunter Island</i> Scientific instrument
36/2017 227/2018	Aus174 Aus173	<i>Huon River</i> Wreck Marine farm works
1002/2017	Aus168	<i>Launceston</i> Harbour works
799/2018	Aus798 800	<i>Lookout Head</i> Scientific instrument
169/2016 1194/2016 440/2017 587/2017 1053/2017 228/2018	Aus177 Aus177 Aus177 792 Aus177 792 Aus177 792 Aus177	<i>Macquarie Harbour</i> Scientific instruments Harbour works Scientific instruments Scientific instruments Beacon established Marine farm works
170/2016	Aus170 766 797	<i>Maria Island</i> Scientific instruments
1103/2014	Aus170 766 797	<i>Mercury Passage</i> Obstructions
372/2016	Aus171 174	<i>North West Bay</i> Mooring area
627/2016	Aus171 796	<i>Pipe Clay Head to Pitt Water</i> Scientific instruments

895(T)/2018 AUSTRALIA - TEMPORARY AND PRELIMINARY NOTICES

<i>Notice</i>	<i>Charts affected</i>	<i>Locality and Subject</i>
182/2018	Aus172	<i>Prince of Wales Bay</i> Harbour works
505/2018	Aus172	<i>River Derwent</i> Wreck
1225/2016	Aus168	<i>River Tamar</i> Scientific instruments
266/2018	Aus790	<i>Robbins Island</i> Light buoy off station
134/2018	Aus175	<i>Spring Bay</i> Marine farm
183/2018	Aus175	Wreck
539/2017	Aus171 795 796	<i>Storm Bay</i> Scientific instrument
597/2018	Aus173 795 796	Scientific instrument
598/2018	Aus173	Buoy off station
760/2018	Aus795 796	Light buoy
TIMOR SEA		
223/2009	Aus312 4721	<i>Sahul Banks</i> Navaid; racon non operational
TORRES STRAIT		
358/2016	Aus377 840	<i>Darnley Island</i> Wreck
878/2017	Aus299	<i>Hammond Island</i> Harbour works; dredging
928/2017	Aus299	Light buoy withdrawn
84/2016	Aus839	<i>Kai-Maituine Reef</i> Wreck
410/2016	Aus841 842	<i>Talbot Islands to Deliverance Island</i> Obstructions
VICTORIA		
586/2017	Aus143	<i>Barwon Heads</i> Light buoy off station
41/2018	Aus357	<i>Bass Strait</i> Survey operations
471/2018	Aus357 487	Restricted areas
795/2018	Aus357	<i>Cape Conran</i> Subsea operations; pipeline operations southwards
891/2018	Aus357 487 4644	Drill rig southwards
1271/2015	Aus349	<i>Cape Reamur</i> Exclusion zone; light buoy
376/2018	Aus357	<i>Golden Beach</i> Scientific instruments
634/2017	Aus182	<i>Lakes Entrance</i> Dredging operations
261/2018	Aus182	Shoaling
126/2018	Aus357 487	<i>Ninety Mile Beach</i> Traffic separation scheme southwestwards

895(T)/2018 AUSTRALIA - TEMPORARY AND PRELIMINARY NOTICES

<i>Notice</i>	<i>Charts affected</i>	<i>Locality and Subject</i>
43/2018	Aus181 182	<i>Port Albert</i> Shoaling
844/2018	Aus141 349	<i>Port Fairy Bay</i> Scientific instrument
1165/2016	Aus158	<i>Port Phillip</i> Buoy off station
120/2017	Aus154	Light beacon destroyed
130/2018	Aus154	Harbour works
179/2018	Aus153 157	Light buoys; AIS
307/2018	Aus143	Harbour works
343/2018	Aus158	Light buoy off station
379/2018	Aus143 155	Light beacon unlit
656/2018	Aus154	Harbour works
893/2018	Aus154	Harbour works
542/2018	Aus181 182	<i>Port Welshpool</i> Harbour works
180/2018	Aus140	<i>Portland Harbour</i> Dredging operations
45/2018	Aus181	<i>Shoal Inlet Entrance</i> Light destroyed
1053/2016	Aus150	<i>The Narrows</i> Shoaling
1052/2017	Aus143 788	<i>Torquay</i> Fish aggregating devices
764/2017	Aus150 151 152	<i>Western Port</i> Light beacons unlit
543/2018	Aus150	Harbour works
595/2018	Aus151	Beacon destroyed
WESTERN AUSTRALIA		
839/2018	Aus754	<i>Alkimos Reef</i> Survey operations
739/2018	Aus64 69 743 744	<i>Ashburton</i> Dredging operations; survey operations
463/2018	Aus65 66	<i>Barrow Island</i> Survey operations
886/2018	Aus328 4723 4725	Drill rig westwards
881/2017	Aus325 326 739	<i>Bedout Island</i> Scientific instruments northwestwards
576/2017	Aus319 320	<i>Browse Island</i> Prelude FLNG commissioning
219/2018	Aus319 320 322 4721 4722	Subsea operations
420/2018	Aus319 320	Mooring buoy northwestwards
534/2018	Aus319 320 4721 4722	Drill rig northwestwards
371/2018	Aus115	<i>Bunbury</i> Dredging operations
696/2018	Aus73	<i>Carnarvon</i> Dredging operations

895(T)/2018 AUSTRALIA - TEMPORARY AND PRELIMINARY NOTICES

<i>Notice</i>	<i>Charts affected</i>	<i>Locality and Subject</i>
271/2013	Aus57 741 742	<i>Dampier</i> Obstruction
216/2016	Aus58 59 60	Scientific instruments
777/2016	Aus57 58 60 741 742	Shoaling
305/2017	Aus59	Harbour works
742/2018	Aus58	Bed levelling operations; survey operations
851/2015	Aus57 327 741 742	<i>Dampier Archipelago</i> Obstruction eastwards
791/2018	Aus754	<i>Direction Bank</i> Wave glider
1078/2015	Aus318 319 727 728	<i>East Holothuria Reef</i> Shoaling
761/2017	Aus110	<i>Emu Point</i> Scientific instrument
940/2016	Aus754 755	<i>Five Fathom Bank</i> Scientific instrument
476/2016	Aus116 335 336 756 757	<i>Flinders Bay</i> Shoaling
339/2017	Aus326 740	<i>Forestier Islands</i> Scientific instrument northwestwards
537/2018	Aus112 113 114 117 754	<i>Fremantle</i> Dredging operations
841/2018	Aus116 755	<i>Geographe Bay</i> Scientific instruments
536/2017	Aus81	<i>Geraldton</i> Marine farm
887/2018	Aus81	Light buoy off station northwestwards
1043/2016	Aus320 323 730 732	<i>Hall Point to Raft Point</i> Shoaling
37/2018	Aus83 332 751	<i>Houtman Abrolhos</i> Shoaling
744/2018	Aus116	<i>Mandurah Estuary</i> Shoaling
522/2016	Aus328	<i>Montebello Islands</i> Light buoy northwestwards
424/2018	Aus328 329 744 4723 4725	<i>Muiron Islands</i> FPSO off station northwestwards
538/2018	Aus328 329 744	Subsea operations northwestwards
745/2018	Aus744	Drilling operations northwards
746/2018	Aus328 329 744	Subsea operations; pipeline operations
793/2018	Aus328 329 4723 4725	<i>North West Cape</i> Drill rig northwestwards
842/2018	Aus69	<i>Onslow</i> Dredging operations
478/2016	Aus754	<i>Perth</i> Scientific instruments westwards

895(T)/2018 AUSTRALIA - TEMPORARY AND PRELIMINARY NOTICES

<i>Notice</i>	<i>Charts affected</i>	<i>Locality and Subject</i>
1123/2015	Aus54	<i>Port Hedland</i>
468/2018	Aus54	Light beacons; tug mooring
586/2018	Aus52 53	Dredging operations
		Harbour works
1092/2016	Aus55 326 740	<i>Port Walcott</i>
338/2018	Aus55 56	Tide gauge
749/2018	Aus56	Survey operations
		Dredging operations
480/2016	Aus327	<i>Rankin Bank</i>
731/2016	Aus327 328	Scientific instrument
630/2017	Aus327	Scientific instruments southwestwards
940/2017	Aus327	Subsea operations
588/2018	Aus327 4723	Mooring buoys
		Subsea operations
631/2017	Aus754	<i>Rottneest Island</i>
		Scientific instrument
763/2017	Aus324 325 4722	<i>Rowley Shoals</i>
		Scientific instruments
888/2018	Aus112 754	<i>Scarborough</i>
		Subsea operations westwards
699/2018	Aus65	<i>Varanus Island</i>
		Navaid replacement works
171/2018	Aus32	<i>Wyndham</i>
		Shoaling
304/2018	Aus40 732 733	<i>Yampi Sound</i>
		Light beacon destroyed
753/2018	Aus4708 4723	INDIAN OCEAN
		<i>Gascoyne Plain</i>
		Light buoy off station
664/2017	Aus4623	PACIFIC OCEAN
		Scientific instruments
35/2018	Aus507 4620 4621	PAPUA NEW GUINEA
412/2018	Aus506 507 623	<i>Batumata Point</i>
		Survey operations southeastwards
		Shoaling
789/2018	Aus4622	<i>Bismarck Sea</i>
		Fish aggregating devices
880/2018	Aus386 387 388 673	<i>Dampier Strait to Isumrud Strait</i>
		Lights unlit
979/2016	Aus523 642 643	<i>Huon Gulf</i>
298/2017	Aus643	Survey operations
790/2018	Aus386 521 522 523 4620 4621 4622	Light buoy off station
		Fish aggregating devices
881/2018	Aus508 625	<i>Isulailai Point</i>
		Light beacon unlit
531/2017	Aus642 643	<i>Lae</i>
		Infrastructure; coastline

895(T)/2018 AUSTRALIA - TEMPORARY AND PRELIMINARY NOTICES

<i>Notice</i>	<i>Charts affected</i>	<i>Locality and Subject</i>
533/2018	Aus505 621	<i>Lark Patch</i> AIS inoperative
499/2018	Aus505 621	<i>Manubada Island to Padana Nahua Passage</i> Shoaling
460/2018	Aus673	<i>Nessup Island</i> Light buoy off station
294/2018	Aus674 677	<i>New Britain</i> Light beacon destroyed
164/2013	Aus628	<i>Nuakata Passage</i> Light beacon destroyed
882/2018	Aus521 644 4620 4621	<i>Oro Bay</i> Light unlit
226/2017	Aus505 621	<i>Padana Nahua Passage to Bootless Inlet</i> Shoaling
144/2016	Aus622	<i>Port Moresby</i> Harbour works; horizontal datum error
SOLOMON ISLANDS		
135/2018	Aus4623 4634 SLB201 304	<i>Florida Islands</i> Light unlit
91/2018	SLB102 301 302	<i>Ghizo Island</i> Shoaling
677/2017	SLB101	<i>Honiara and Lungga Roads</i> Shoaling
678/2017	SLB101 201	<i>Lungga Point</i> Light beacon unlit
679/2017	Aus4604 4623 4634 SLB304 305	<i>Maana'oba Island to Mbita'ama Harbour</i> Lights unlit
680/2017	SLB101	<i>Marau Sound</i> Light beacons unlit
681/2017	Aus4623 SLB107	<i>Ndende Island</i> Light unlit
682/2017	SLB102 301 302	<i>Nega Point</i> Light beacons unlit
847/2018	SLB102 301 302	<i>Nusatupe Island</i> Topmark destroyed
683/2017	Aus4623 4634 SLB305	<i>San Christobal Island</i> Light unlit
848/2018	Aus4623 4634 SLB101 201 304 305	<i>Tawara'o Island to Taivu Point</i> Lights unlit
684/2017	Aus4604 4621 4622 4623 4634 SLB301 302	<i>Vaghoe Point</i> Light unlit
TIMOR-LESTE		
838/2018	Aus312 4721	<i>Sahul Banks</i> Drill rig

HYDROGRAPHIC REPORTS

<i>Locality</i>	<i>Report</i>	<i>Ship/Authority</i>	<i>Observer</i>
QLD- Hatchman Point	Nomenclature		L Hatchman

III

NAVIGATION WARNINGS

The Australian Hydrographic Office will no longer compile Section III of the Australian Notices to Mariners. For the most up to date navigation warnings please refer to:

AMSA Navigation Warnings

<http://amsa.gov.au/search-and-rescue/distress-and-safety-comms/msi/msi-email/index.asp>

New Zealand Notices to Mariners (Navarea XIV warnings)

<http://www.linz.govt.nz/sea/maritime-safety/notices-mariners>

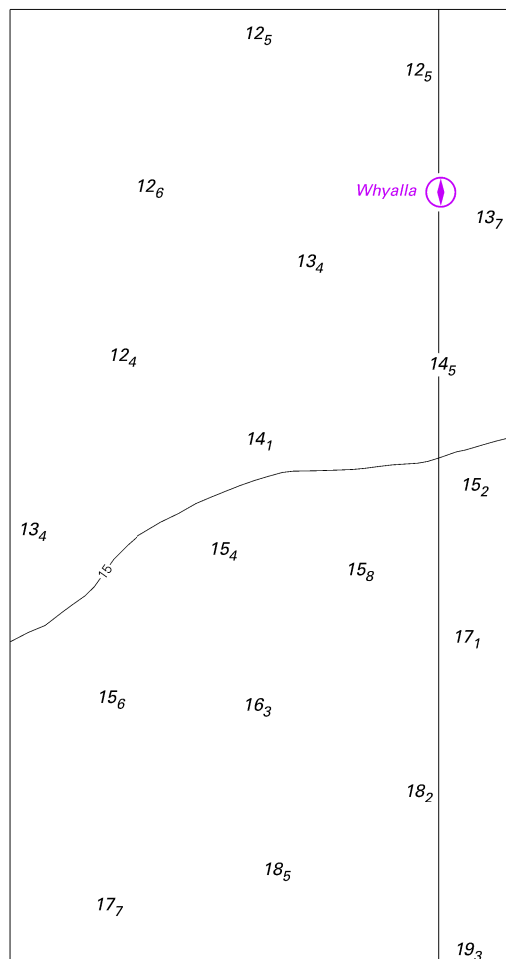
To accompany Australian Notice to Mariners 853/2018

HISTORIC WRECK

The site of an historic wreck is protected from unauthorised interference. For details see Seafarers Handbook for Australian Waters AHP 20.

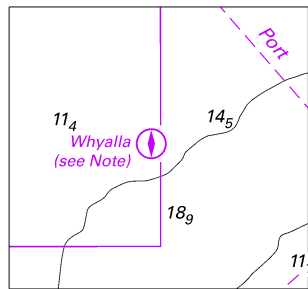
Note for chart Aus 217

To accompany Australian Notice to Mariners 863/2018



© Commonwealth of Australia 2018
Block for Chart Aus 135 (66.1 x 126.3mm)

To accompany Australian Notice to Mariners 863/2018



© Commonwealth of Australia 2018
Block for Chart Aus 136
(40.3 x 37.2mm)

To accompany Australian Notice to Mariners 867/2018

