



6 March 2020

Edition 5

AUSTRALIAN NOTICES TO MARINERS

Notices 185 - 220

Published fortnightly by the Australian Hydrographic Office



Australian Notices to Mariners are the authority for correcting charts and publications published by the Australian Hydrographic Office covering Australia, Papua New Guinea, Solomon Islands, Australian Antarctic Territory and Timor-Leste.

Commodore F.T. FREEMAN RAN
Hydrographer of Australia

SECTIONS.

- I. **Australian Notices to Mariners, including blocks and notes.**
- II. **Hydrographic Reports.**

SUPPLEMENTS.

- I. **Tracings**
 - II. **Cumulative List of Australian Notices to Mariners.**
 - III. **Cumulative List of Temporary and Preliminary Australian Notices to Mariners.**
 - IV. **Temporary and Preliminary Notices in force.**
-
-

© Commonwealth of Australia 2020

This work is copyright. Apart from any use permitted under the Copyright Act 1968, no part may be reproduced by any process, adapted, communicated or commercially exploited without prior written permission from The Commonwealth represented by the Australian Hydrographic Office.

IMPORTANT NOTICE

This edition of Notices to Mariners includes all significant information affecting AHO products which the AHO has become aware of since the last edition. All reasonable efforts have been made to ensure the accuracy and completeness of the information, including third party information, on which these updates are based. The AHO regards third parties from which it receives information as reliable, however the AHO cannot verify all such information and errors may therefore exist. The AHO does not accept liability for errors in third party information.

GENERAL INSTRUCTIONS

The substance of these notices should be inserted on the charts affected.

Bearings are referred to the true compass and are reckoned clockwise from North; those relating to lights are given as seen by an observer from seaward.

Positions quoted in notices relate to WGS84 which is the horizontal datum for all charts produced by the Australian Hydrographic Office.

The range quoted for a light is its nominal range.

Depths are with reference to the chart datum of each chart. Heights are above mean high water springs or mean higher high water, as appropriate.

The capital letter (P) or (T) after the number of any notice denotes a preliminary or temporary notice respectively, which are contained separately at the end of the permanent notices.

REPORTING OF DANGERS

Mariners are particularly requested to notify the AUSTRALIAN HYDROGRAPHIC OFFICE, Locked Bag 8801 Wollongong, NSW 2500 (Fax 02-4223 6599, e-mail datapcentre@hydro.gov.au or, alternatively by filling in and submitting the [Hydrographic Notes](#) forms located on the web site – www.hydro.gov.au), immediately on the discovery of new dangers or suspected dangers to navigation. For changes or defects in aids to navigation notify AusSAR (Fax 02-6230 6868 or email rccaus@amsa.gov.au).

AUTHORISED USE

Copies of Australian notices are available free of charge from the Australian Hydrographic Office (AHO) website (www.hydro.gov.au) and through the eNotices (email) service (www.hydro.gov.au/enotices/enotices.htm).

Individual Notices may be copied for the purpose of inserting Notice substance on official charts and publications. Paper copies may be printed by chart agents and distributed to customers on a cost recovery basis. Participating chart agents are listed on the AHO website as providing a 'Paper Notices to Mariners' service (www.hydro.gov.au/webapps/jsp/agents/agents-list.jsp). Copies of the notices may not be sold for profit without prior written agreement.

NUMERICAL INDEX OF NOTICES TO MARINERS

Edition No 5

Notices	Aus Chart, INT Chart, ENC Cell, AHP, BA Pubs
185	Aus 489, 625, 626, 635, 4620, 4621, 4623, 4634, INT 620, 621, 623, 634, PNG 625, 626, 635
186	Aus 280, 281, 512, 547, 554
187	Amendment to Mariner's Handbook for Australian Waters AHP20
188	Aus 301, 700
189	Aus 236
190	Aus 814
191	PNG 518
192	Aus 377, 514, 840, PNG 508
193	Aus 317, 4721, 4722, INT 721, 722
194	Aus 336, 337
195	Aus 117
196	Aus 32
197	Aus 143, 158
198	Aus 158
199	Aus 140
200	Aus 766, 797
201(P)	Aus 197, 235, 489, 809, 815, 4601, 4602, 4604, 4622, 4623, 4634, 4635, 4643, INT 601, 602, 604, 622, 623, 634, 635, 643, SLB 305
202(T)	Aus 238
203(T)	Aus 244, 245, 247, 271, 272, 819
204(T)	Aus 240
205(T)	Aus 256, 827
206(T)	Aus 256, 257, 827
207(T)	Aus 197, 200, 379, 489, 505, 611, 621, 808, 4620, 4621, 4622, 4623, 4634, 4635, 4643, INT 620, 621, 622, 623, 634, 635, 643, PNG 506, SLB 101, 102, 106, 201, 301, 302, 303, 304
208(T)	Aus 4604, 4620, 4621, INT 604, 620, 621, PNG 518, 519
209(T)	Aus 328, 4723, INT 723
210(T)	Aus 328, 4723, INT 723
211(T)	Aus 754
212(T)	Aus 754
213(T)	Aus 322, 325, 326, 327, 4722, 4723, INT 722, 723
214(T)	Aus 64, 328, 743
215(T)	Aus 349, 787
216(T)	Aus 349, 357, 487, 787
217(T)	Aus 144, 158
218(T)	Aus 154
219(T)	Aus 140, 349
220(T)	Aus 148, 163, 164, 181, 182, 357, 487, 799, 801, 802, 4644, INT 644

NUMERICAL INDEX OF CHARTS AFFECTED

Edition No 5

Aus Chart	Notices
Aus 32	196
Aus 64	214(T)
Aus 117	195
Aus 140	199, 219(T)
Aus 143	197
Aus 144	217(T)
Aus 148	220(T)
Aus 154	218(T)
Aus 158	197, 198, 217(T)
Aus 163	220(T)
Aus 164	220(T)
Aus 181	220(T)
Aus 182	220(T)
Aus 197	201(P), 207(T)
Aus 200	207(T)
Aus 235	201(P)
Aus 236	189
Aus 238	202(T)
Aus 240	204(T)
Aus 244	203(T)
Aus 245	203(T)
Aus 247	203(T)
Aus 256	205(T), 206(T)
Aus 257	206(T)
Aus 271	203(T)
Aus 272	203(T)
Aus 280	186
Aus 281	186
Aus 301	188
Aus 317	193
Aus 322	213(T)
Aus 325	213(T)
Aus 326	213(T)
Aus 327	213(T)
Aus 328	209(T), 210(T), 214(T)
Aus 336	194
Aus 337	194
Aus 349	215(T), 216(T), 219(T)
Aus 357	216(T), 220(T)
Aus 377	192
Aus 379	207(T)
Aus 487	216(T), 220(T)
Aus 489	185, 201(P), 207(T)
Aus 505	207(T)
Aus 512	186
Aus 514	192
Aus 547	186
Aus 554	186
Aus 611	207(T)
Aus 621	207(T)
Aus 625	185
Aus 626	185
Aus 635	185
Aus 700	188

Aus Chart	Notices
Aus 743	214(T)
Aus 754	211(T), 212(T)
Aus 766	200
Aus 787	215(T), 216(T)
Aus 797	200
Aus 799	220(T)
Aus 801	220(T)
Aus 802	220(T)
Aus 808	207(T)
Aus 809	201(P)
Aus 814	190
Aus 815	201(P)
Aus 819	203(T)
Aus 827	205(T), 206(T)
Aus 840	192
Aus 4601	201(P)
Aus 4602	201(P)
Aus 4604	201(P), 208(T)
Aus 4620	185, 207(T), 208(T)
Aus 4621	185, 207(T), 208(T)
Aus 4622	201(P), 207(T)
Aus 4623	185, 201(P), 207(T)
Aus 4634	185, 201(P), 207(T)
Aus 4635	201(P), 207(T)
Aus 4643	201(P), 207(T)
Aus 4644	220(T)
Aus 4721	193
Aus 4722	193, 213(T)
Aus 4723	209(T), 210(T), 213(T)
PNG 506	207(T)
PNG 508	192
PNG 518	191, 208(T)
PNG 519	208(T)
PNG 625	185
PNG 626	185
PNG 635	185
SLB 101	207(T)
SLB 102	207(T)
SLB 106	207(T)
SLB 201	207(T)
SLB 301	207(T)
SLB 302	207(T)
SLB 303	207(T)
SLB 304	207(T)
SLB 305	201(P)

INT Chart	Notices
INT 601	201(P)
INT 602	201(P)
INT 604	201(P), 208(T)

INT Chart	Notices
INT 620	185, 207(T), 208(T)
INT 621	185, 207(T), 208(T)
INT 622	201(P), 207(T)
INT 623	185, 201(P), 207(T)
INT 634	185, 201(P), 207(T)
INT 635	201(P), 207(T)
INT 643	201(P), 207(T)
INT 644	220(T)
INT 721	193
INT 722	193, 213(T)
INT 723	209(T), 210(T), 213(T)

185 AUSTRALIA - Products - New Charts, New Editions, Withdrawn Charts

Australian Hydrographic Office , UKHO

New Charts

<i>Chart</i>	<i>Title and Geographical limits</i>	<i>Scale</i>	<i>Publication Date</i>	<i>Remarks</i>
PNG 625	Papua New Guinea - China Strait 10° 25' 88 S – 10° 46' 90 S 150° 33' 30 E – 150° 46' 73 E	1:37 500	6 March 2020	Adoption of Papua New Guinea chart numbering. Replaces Aus 625. General updating throughout.
PNG 626	Papua New Guinea - South Coast - Approaches to Daru 9° 00' 80 S – 9° 11' 16 S 143° 10' 00 E – 143° 23' 36 E	1:37 500	6 March 2020	Adoption of Papua New Guinea chart numbering. Replaces Aus 626. General updating throughout.
PNG 635	Papua New Guinea - North East Coast - Approaches to Kwaiapan Bay 9° 05' 00 S – 9° 18' 48 S 152° 23' 16 E – 152° 41' 00 E Plan: Kwaiapan Bay 9° 05' 85 S – 9° 07' 20 S 152° 39' 40 E – 152° 40' 80 E	1:50 000 1:10 000	6 March 2020	Adoption of Papua New Guinea chart numbering. Replaces Aus 635. General updating throughout.

New Electronic Navigation Chart (Aus ENC)

<i>Cell Name</i>	<i>Title</i>	<i>Publication Date</i>	<i>Remarks</i>
NIL			

New Editions and Withdrawn Charts

<i>Chart</i>	<i>Title</i>	<i>Scale</i>	<i>Publication Date</i>	<i>Remarks</i>
NIL				

Charts withdrawn

<i>Chart</i>	<i>Remarks</i>
Aus 625	On publication of new chart PNG 625
Aus 626	On publication of new chart PNG 626
Aus 635	On publication of new chart PNG 635

Admiralty publication

<i>NP No</i>	<i>Title</i>	<i>Date</i>	<i>Remarks</i>
NP284	ADMIRALTY List of Radio Signals. Meteorological Observation Stations Volume 4 First Edition 2020.	27/2/2020	The 2018/19 Edition is cancelled.

Note*Notice to Mariners 129/2020*

Planned New Editions of charts Aus 489, Aus 4620, Aus 4621, Aus 4623 and Aus 4634 have been cancelled.

Chart permanently withdrawn

Charts listed above as withdrawn no longer meet chart carriage requirements and should be marked as "superseded" and replaced with the new chart/ new edition listed prior to passage through the area covered by the new chart.

When placing orders with a chart agent between notice of forthcoming edition and its publication, mariners should advise whether their order pertains to the current edition or the new edition.

For further details refer to the AHO website at www.hydro.gov.au for new edition and new chart stock arrival information.

186 AUSTRALIA - Products - New Charts and New Editions to be published shortly

Australian Hydrographic Office

New Charts to be published shortly

<i>Chart</i>	<i>Title</i>	<i>Scale</i>	<i>Expected Publication Date</i>	<i>Remarks</i>
PNG 512	Papua New Guinea - North East Coast - Misima Island to Bonvouloir Islands	1:150 000	20 March 2020	Adoption of Papua New Guinea chart numbering. Replaces Aus 512. General updating throughout; including latest bathymetric data.
PNG 547	Papua New Guinea - New Britain - North Coast - Bangula Bay to Eleonora Bay	1:150 000	20 March 2020	Adoption of Papua New Guinea chart numbering. Replaces Aus 547. General updating throughout.
PNG 554	Papua New Guinea - New Britain - New Ireland - Cape St George to Rabaul	1:150 000	20 March 2020	Adoption of Papua New Guinea chart numbering. Replaces Aus 554. General updating throughout.

New Editions to be published shortly

<i>Chart</i>	<i>Title</i>	<i>Scale</i>	<i>Expected Publication Date</i>	<i>Remarks</i>
NIL				

Charts to be withdrawn

<i>Chart</i>	<i>Remarks</i>
Aus 512	On publication of new chart PNG 512
Aus 547	On publication of new chart PNG 547
Aus 554	On publication of new chart PNG 554

Charts to be withdrawn without replacement 3 April 2020

<i>Chart</i>	<i>Title</i>	<i>Scale</i>	<i>Publication Date</i>
Aus 280 Edition 5	Australia - East Coast - Queensland - Plans in Queensland (Sheet 3) Plans: Magpie Reef to Eden Reef Flinders Group	1:75 000 1:50 000	22 February 2019
Aus 281 Edition 3	Australia - East Coast - Queensland - First Three Mile Opening to Cape Direction	1:75 000	22 February 2019

187 AUSTRALIA - Product - Amendment to Mariner's Handbook for Australian Waters AHP20

Australian Hydrographic Office

Chapter 2 - Notes - page 20 - Note 1, Formation of new Australian Government Departments

Insert accompanying block**188 AUSTRALIA - QUEENSLAND - Carpentaria Shoal - Depth**

Australian Hydrographic Office

Aus 301 [141/2020]Delete depth, 27₉m, and enclosing contour 10° 41'.0 S 141° 04'.5 E**Aus 700 [48/2020]**Delete depth, 27₉m, and enclosing contour 10° 41'.0 S 141° 04'.5 E

189 AUSTRALIA - QUEENSLAND - Moreton Bay - St Helena Island - Radio towers

Maritime Safety Queensland

Aus 236 [139/2020]

Insert	radio tower with legend, (R Lts)	27° 22'.78 S	153° 14'.17 E
	radio tower with legend, (R Lts)	27° 22'.79 S	153° 14'.04 E

Delete	radio mast and legend, 2 RADIO MASTS (137) (R Lts)	27° 22'.9 S	153° 13'.9 E
--------	--	-------------	--------------

190 AUSTRALIA - QUEENSLAND - Point Lookout - Scientific instrument northwards

CSIRO

Aus 814 [137/2020]

Insert	depth, 20m, enclosed by danger circle, with legend ODAS	27° 20'.61 S	153° 33'.72 E
--------	---	--------------	---------------

191 PAPUA NEW GUINEA - Goschen Strait - Julian Reef - Depths; reef delineation

Former Notice - 163(P)/2020 is cancelled

HMAS *Benalla***PNG 518 [NC 1/11/2019]**

Insert	accompanying block	9° 59'.0 S	150° 48'.0 E
--------	--------------------	------------	--------------

192 PAPUA NEW GUINEA - Kwaiapan Bay to Daru - Chart name

Australian Hydrographic Office

Aus 377 [822/2019]

Amend	legend to PNG 626	9° 10'.7 S	143° 22'.4 E
-------	-------------------	------------	--------------

Aus 514 [1087/2019]

Amend	legend to PNG 635	9° 18'.3 S	152° 23'.8 E
-------	-------------------	------------	--------------

Aus 840 [773/2019]

Amend	legend to PNG 626	9° 03'.0 S	144° 17'.3 E
	legend to PNG 626	9° 11'.0 S	143° 22'.8 E

PNG 508 [13/2020]

Amend	legend to PNG 625	10° 26'.1 S	150° 46'.2 E
	legend to PNG 625	10° 30'.0 S	150° 28'.2 E

193 INDONESIA - Pulau Roti to Pulau Nusaende - Lights

UKHO BA Notice 9/1139/2020

Aus 317 [146/2020]

Insert	light, Fl.5s 24m 18M	10° 45'.2 S	122° 54'.8 E
--------	----------------------	-------------	--------------

Aus 4721 (INT 721) [145/2020]

Insert	light, Fl.18M	10° 45'.2 S	122° 54'.8 E
	light, Fl.14M	8° 00'.3 S	125° 45'.7 E

Aus 4722 (INT 722) [146/2020]

Insert	light, Fl.18M	10° 45'.2 S	122° 54'.8 E
	light, Fl.14M	8° 00'.3 S	125° 45'.7 E
	light, Fl.18M	8° 51'.2 S	121° 39'.7 E
	light, Iso.14M	8° 52'.7 S	121° 30'.9 E

194 AUSTRALIA - WESTERN AUSTRALIA - Eclipse Island - Fish aggregating device southeastwards

Recfishwest

Aus 336 [18/2020]

Insert	special conical light buoy, Fl.Y.3s FAD (Nov - May), without topmark	35° 21'.99 S	118° 07'.94 E
--------	--	--------------	---------------

Aus 337 [18/2020]

Insert	special conical light buoy, Fl.Y.3s FAD (Nov - May), without topmark	35° 21'.99 S	118° 07'.94 E
--------	--	--------------	---------------

195 AUSTRALIA - WESTERN AUSTRALIA - Kwinana - Light beacons

Fremantle Ports

Aus 117 [148/2020]

Replace	light beacon with west cardinal light beacon, Q(9)15s, with topmark	32° 11'.77 S	115° 46'.30 E
	light beacon with west cardinal light beacon, Q(9)15s, with topmark	32° 11'.92 S	115° 46'.24 E

Delete	light beacon	32° 11'.77 S	115° 46'.32 E
	light beacon	32° 11'.92 S	115° 46'.26 E

196 AUSTRALIA - WESTERN AUSTRALIA - Wyndham - Lit raft buoy

Cambridge Gulf Ltd

Aus 32 (Approaches to Wyndham Wharf) [149/2020]

Move	lit raft buoy	15° 27'.1 S	128° 05'.7 E
	to	15° 27'.10 S	128° 05'.60 E

Aus 32 (Wyndham Wharf) [149/2020]

Move	lit raft buoy	15° 27'.1 S	128° 05'.7 E
	to	15° 27'.10 S	128° 05'.60 E

197 AUSTRALIA - VICTORIA - Port Phillip - Sorrento - Navaids

Australian Hydrographic Office

Aus 143 [25/2020]

Delete	topmark	38° 19'.5 S	144° 44'.5 E
--------	---------	-------------	--------------

Aus 143 (Sorrento) [25/2020]

Delete	topmark	38° 19'.48 S	144° 44'.53 E
	buoy	38° 20'.00 S	144° 44'.66 E
	buoy	38° 20'.06 S	144° 44'.67 E

Aus 158 [25/2020]

Delete	topmark	38° 19'.48 S	144° 44'.53 E
	buoy	38° 20'.00 S	144° 44'.66 E
	buoy	38° 20'.06 S	144° 44'.67 E

198 AUSTRALIA - VICTORIA - Port Phillip - Mud Island - Moorings

Parks Victoria Notice 55/2020

Aus 158 [197/2020]

Insert	legend, <i>Moorings</i> , centred on	38° 16'.629 S	144° 46'.523 E
--------	--------------------------------------	---------------	----------------

199 AUSTRALIA - VICTORIA - Portland - Light

Port of Portland

Aus 140 (Portland) [154/2020]

Amend	light to <i>Fl.G.4s 14m 10M & Fl.Bu.5s</i>	38° 20'.70 S	141° 37'.18 E
-------	--	--------------	---------------

200 AUSTRALIA - TASMANIA - Maria Island - Light buoy; scientific instrument

CSIRO

Aus 766 [27/2020]

Insert	depth, 20m, enclosed by danger circle, with legend <i>ODAS</i>	42° 35'.79 S	148° 14'.01 E
	special conical light buoy, <i>Fl.Y.4s</i> , without topmark	42° 36'.10 S	148° 14'.30 E

Delete	light buoy	42° 35'.9 S	148° 14'.0 E
--------	------------	-------------	--------------

Aus 797 [157/2018]

Insert	depth, 20m, enclosed by danger circle, with legend <i>ODAS</i>	42° 35'.79 S	148° 14'.01 E
	special conical light buoy, <i>Fl.Y.4s</i> , without topmark	42° 36'.10 S	148° 14'.30 E

Delete	light buoy	42° 35'.9 S	148° 14'.0 E
--------	------------	-------------	--------------

201(P)/2020 AUSTRALIA - NEW SOUTH WALES - Sydney - Maroochydore - SOLOMON ISLANDS - Submarine cable
33 Below Pty Ltd

A submarine cable exists between the following positions:

2° 12'.0 S 156° 20'.0 E
11° 21'.9 S 163° 38'.8 E
19° 13'.8 S 159° 28'.9 E
25° 20'.8 S 160° 15'.7 E
26° 55'.1 S 157° 57'.9 E
32° 00'.9 S 154° 50'.8 E
32° 47'.6 S 154° 44'.5 E
34° 05'.2 S 153° 01'.0 E
33° 46'.6 S 152° 07'.2 E
33° 43'.3 S 151° 18'.0 E
and
26° 55'.0 S 157° 57'.9 E
26° 15'.6 S 156° 39'.3 E
26° 09'.3 S 153° 50'.2 E
26° 39'.5 S 153° 06'.7 E.

Charts will be updated in due course.

Mariners are advised to navigate with caution in the area.

Chart which will be affected - Aus 197 - Aus 235 - Aus 489 - Aus 809 - Aus 815 - Aus 4601 (INT 601) - Aus 4602 (INT 602) - Aus 4604 (INT 604) - Aus 4622 (INT 622) - Aus 4623 (INT 623) - Aus 4634 (INT 634) - Aus 4635 (INT 635) - Aus 4643 (INT 643) - SLB 305

202(T)/2020 AUSTRALIA - QUEENSLAND - Brisbane River - Aquarium Passage - Wreck
Maritime Safety Queensland Notice 42(T)/2020

A wreck marked by a special light buoy, *Fl.Y.3s*, exists in position 27° 26'.29 S 153° 07'.62 E.

Chart temporarily affected - Aus 238

203(T)/2020 AUSTRALIA - QUEENSLAND - Gladstone - Dredging operations
Maritime Safety Queensland Notice 69(T)/2020

The dredge *Woomera*; barges *Steel Hauler*, *MDT 1801*, *Stradbroke* and *PMG 180*; survey/transfer vessel *Nuginistar*; and tug boats *Laurie M*, *Ocean*, *Mildred* and *Jackal* are conducting dredging operations in an area bounded by the following positions:

23° 48'.58 S 151° 14'.09 E
23° 49'.11 S 151° 14'.66 E
23° 49'.50 S 151° 15'.19 E
23° 49'.51 S 151° 15'.24 E
23° 49'.47 S 151° 15'.25 E
23° 49'.14 S 151° 14'.85 E
23° 49'.03 S 151° 14'.84 E
23° 48'.83 S 151° 14'.57 E
23° 48'.51 S 151° 14'.25 E
23° 48'.44 S 151° 14'.05 E.

The dredge will display appropriate lights and shapes.

All vessels will monitor VHF Ch 13, Ch 15 and Ch 16.

The unloading pontoon *AMS Gladstone* exists in an area bounded by the following positions:

23° 45'.90 S 151° 09'.87 E
23° 45'.89 S 151° 09'.97 E
23° 45'.96 S 151° 09'.98 E
23° 45'.97 S 151° 09'.88 E.

The pontoon will be marked by lights, Q, in positions 23° 45'.92 S 151° 09'.95 E and 23° 45'.93 S 151° 09'.95 E.

Mariners are advised to navigate with caution in the area and be vigilant of barges being towed to and from the dredge area.

Chart temporarily affected - Aus 244 - Aus 245 - Aus 247 - Aus 271 - Aus 272 - Aus 819

204(T)/2020 AUSTRALIA - QUEENSLAND - Great Sandy Strait - Tin Can Inlet - Light beacon unlit
Maritime Safety Queensland Notice 75(T)/2020

The west cardinal light beacon, Q(9)15s (25° 53'.59 S 153° 02'.43 E), is unlit.

Chart temporarily affected - Aus 240

205(T)/2020 AUSTRALIA - QUEENSLAND - Rattlesnake Island - Live firing
Maritime Safety Queensland Notice 72(T)/2020, 73(T)/2020

Live firing activities will be conducted within a 5M radius of position 19° 02'.27 S 146° 36'.43 E from 9 March to 13 March 2020 and 16 March to 20 March 2020.

Mariners are advised to navigate with caution in the area.

Chart temporarily affected - Aus 256 - Aus 827

206(T)/2020 AUSTRALIA - QUEENSLAND - Townsville - Harbour works
Maritime Safety Queensland Notice 71(T)/2020

Harbour works associated with the construction of a rock wall are in progress in an area bounded by the following:

<i>Position</i>	<i>Remarks</i>
19° 14'.84 S 146° 50'.43 E	special light beacon, <i>Fl. Y. 4s C1</i>
19° 14'.70 S 146° 50'.51 E	special light buoy, <i>Fl. Y. 4s C2</i>
19° 14'.58 S 146° 50'.62 E	special light buoy, <i>Fl. Y. 4s S1</i>
19° 14'.81 S 146° 50'.84 E	special light buoy, <i>Fl. Y. 4s C4</i>
19° 15'.08 S 146° 51'.04 E	special light buoy, <i>Fl. Y. 4s S2</i>
19° 15'.22 S 146° 50'.94 E	special light buoy, <i>Fl. Y. 4s C6</i>
19° 15'.34 S 146° 50'.83 E	special light buoy, <i>Fl. Y. 4s C7</i>

Uncharted rocks resulting from the works will present a hazard to navigation in the area.

Mariners are advised not to anchor within or navigate through the area.

Chart temporarily affected - Aus 256 - Aus 257 - Aus 827

207(T)/2020 PAPUA NEW GUINEA - SOLOMON ISLANDS - Submarine cable
Former Notice - 1268(P)/2019 is cancelled
33 Below Pty Ltd

Cancel this notice on receipt.

Chart formerly affected - Aus 197 - Aus 200 - Aus 379 - Aus 489 - Aus 505 - Aus 611 - Aus 621 - Aus 808 - Aus 4620 (INT 620) - Aus 4621 (INT 621) - Aus 4622 (INT 622) - Aus 4623 (INT 623) - Aus 4634 (INT 634) - Aus 4635 (INT 635) - Aus 4643 (INT 643) - PNG 506 - SLB 101 - SLB 102 - SLB 106 - SLB 201 - SLB 301 - SLB 302 - SLB 303 - SLB 304

208(T)/2020 PAPUA NEW GUINEA - Ward Hunt Strait - Ipoteto Island - Light unlit
National Maritime Safety Authority PNG

The light, *Fl(2)8s 23m 10M* (9° 37'.78 S 150° 01'.36 E), is unlit.

Chart temporarily affected - Aus 4604 (INT 604) - Aus 4620 (INT 620) - Aus 4621 (INT 621) - PNG 518 - PNG 519

209(T)/2020 AUSTRALIA - WESTERN AUSTRALIA - Montebello Islands - Drill rig northwestwards
Australian Maritime Safety Authority

Drill rig *Valaris DPS-1* is conducting drilling operations in position 19° 49'.67 S 115° 10'.59 E.

Chart temporarily affected - Aus 328 - Aus 4723 (INT 723)

210(T)/2020 AUSTRALIA - WESTERN AUSTRALIA - Montebello Islands - Drill rig northwestwards moved

Former Notice - 171(T)/2020 is cancelled
Australian Maritime Safety Authority

Cancel this notice on receipt.

Chart formerly affected - Aus 328 - Aus 4723 (INT 723)

211(T)/2020 AUSTRALIA - WESTERN AUSTRALIA - Perth - Scientific instruments westwards

Former Notice - 977(T)/2019 is cancelled
CSIRO

Cancel this notice on receipt.

Chart formerly affected - Aus 754

212(T)/2020 AUSTRALIA - WESTERN AUSTRALIA - Rottnest Island - Scientific instruments northwestwards

CSIRO

Subsurface scientific instruments exist as follows:

<i>Position</i>	<i>Depth below surface</i>
31° 38'.8 S 115° 11'.8 E	24m
31° 43'.7 S 115° 02'.5 E	23m
31° 45'.9 S 114° 57'.9 E	496m
31° 59'.0 S 115° 13'.7 E	180m
31° 59'.4 S 115° 23'.1 E	22m
32° 00'.0 S 115° 25'.0 E	46m

Chart temporarily affected - Aus 754

213(T)/2020 AUSTRALIA - WESTERN AUSTRALIA - Scott Reef to Rankin Bank - Scientific instruments recovered

Former Notice - 1288(T)/2019 is cancelled
RPS Group

Cancel this notice on receipt.

Chart formerly affected - Aus 322 - Aus 325 - Aus 326 - Aus 327 - Aus 4722 (INT 722) - Aus 4723 (INT 723)

214(T)/2020 AUSTRALIA - WESTERN AUSTRALIA - Thevenard Island - Drill rig

Valaris

Drill rig *Valaris 107* is conducting drilling operations in position 21° 24'.91 S 115° 02'.37 E.

Chart temporarily affected - Aus 64 - Aus 328 - Aus 743

215(T)/2020 AUSTRALIA - VICTORIA - Port Campbell - Seismic survey

Australian Maritime Safety Authority Auscoast Warning 114/2020

Vessel *Vos Shine* is conducting a seismic survey in an area bounded by the following positions:

38° 35'.75 S 142° 33'.90 E
38° 35'.75 S 143° 00'.65 E
38° 49'.60 S 143° 00'.65 E
38° 49'.60 S 142° 33'.90 E.

Mariners are advised to navigate with caution in the area.

Chart temporarily affected - Aus 349 - Aus 787

216(T)/2020 AUSTRALIA - VICTORIA - Port Campbell to Cape Conran - Subsea operations completed

Former Notice - 118(T)/2020 is cancelled

Maritime Safety Victoria Notice 40(T)/2020, 41(T)/2020

Cancel this notice on receipt.

Chart formerly affected - Aus 349 - Aus 357 - Aus 487 - Aus 787

217(T)/2020 AUSTRALIA - VICTORIA - Port Phillip - Point Nepean - Light buoy off station

Parks Victoria Notice 88(T)/2020

The special light buoy, *Fl.Y.5s* (38° 17'.95 S 144° 39'.14 E), is off station.

Chart temporarily affected - Aus 144 - Aus 158

218(T)/2020 AUSTRALIA - VICTORIA - Port Phillip - Williamstown - Light buoy off station

Parks Victoria Notice 68(T)/2020

The isolated danger light buoy, *Fl(2)10s* (37° 51'.41 S 144° 54'.24 E), is off station.

Chart temporarily affected - Aus 154

219(T)/2020 AUSTRALIA - VICTORIA - Portland Bay - Scientific instruments

Maritime Safety Victoria Notice 79(T)/2020

Subsurface scientific instruments exist 5m below the surface in the following positions:

38° 16'.05 S 141° 50'.82 E

38° 16'.10 S 141° 51'.17 E

38° 16'.14 S 141° 51'.56 E.

Chart temporarily affected - Aus 140 - Aus 349

220(T)/2020 AUSTRALIA - BASS STRAIT - Cape Liptrap to Mersey Bluff - Survey operations completed

Former Notice - 79(T)/2020 is cancelled

Fugro

Cancel this notice on receipt.

Chart formerly affected - Aus 148 - Aus 163 - Aus 164 - Aus 181 - Aus 182 - Aus 357 - Aus 487 - Aus 799 - Aus 801 - Aus 802 - Aus 4644 (INT 644)

II

HYDROGRAPHIC REPORTS

NIL

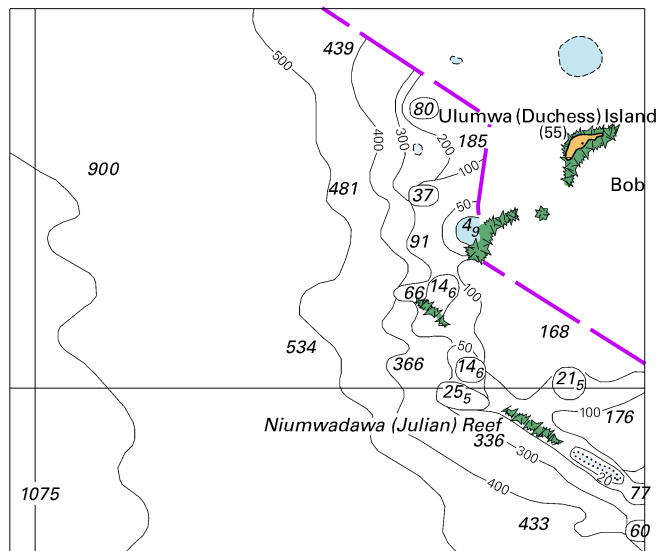
Note 1 - On 1 February 2020 the Australian Government formed the:

- (a) Department of Agriculture, Water and the Environment (AWE) by merging
 - (i) Department of Agriculture and Water Resources (DAWR); and
 - (ii) Department of the Environment and Energy (Environment portfolio) (DEE)
- (b) Department of Infrastructure, Transport, Regional Development and Communications by merging:
 - (i) Department of Infrastructure, Transport, Cities and Regional Development (DITCRD); and
 - (ii) Department of Communications and the Arts.
- (c) Department of Industry, Science, Energy and Resources by merging:
 - (i) Department of Industry, Innovation and Science; and
 - (ii) Department of the Environment and Energy (Energy portfolio); and
 - (iii) Department of Employment, Skills, Small and Family Business (Small Business portfolio)

References to the former Government Departments should be replaced with the new Government Department titles throughout AHP20.

All website links, email addresses and contact information currently remain as printed (6 Mar 2020).

To accompany Australian Notice to Mariners 191/2020



© Commonwealth of Australia 2020

Block for chart PNG 518

(84.0 x 71.8mm)